

Water Main (4" C.I.P.)  
 Hit at Following Locations

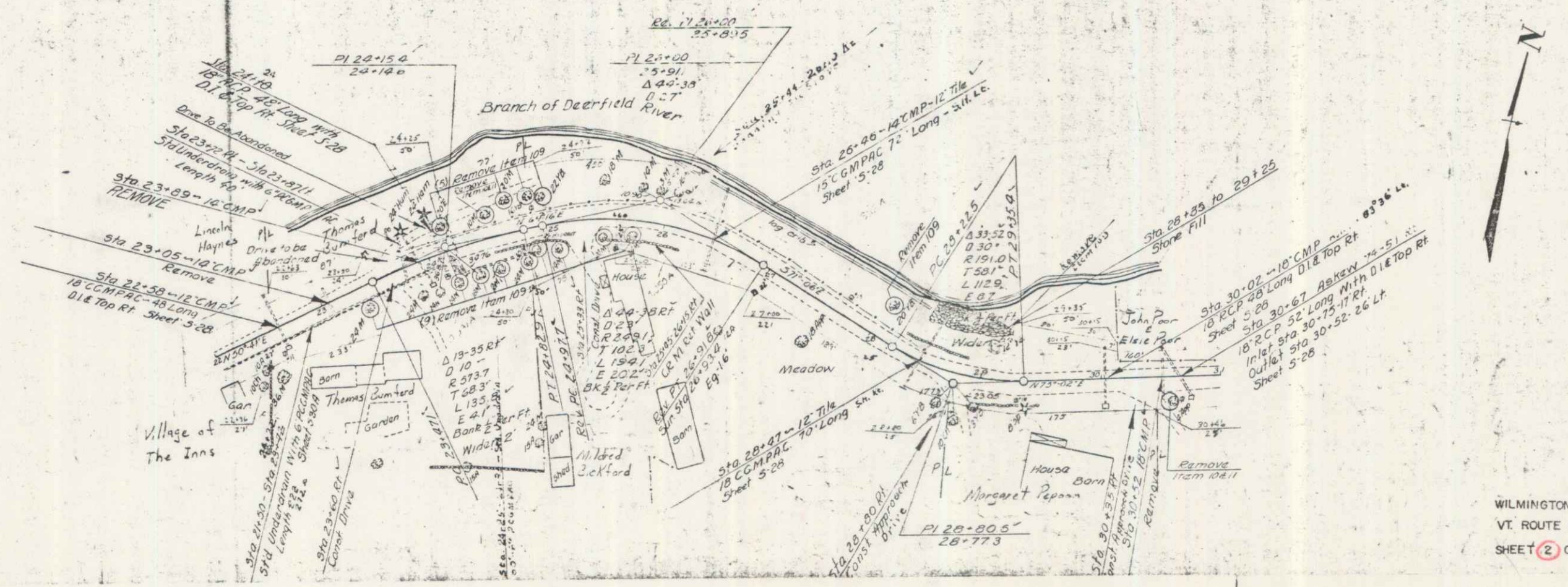
Sta	Dist	Depth
12+55	173.53	16.5 FT
14+80	122.33	18.5 FT
14+00	166.84	29.7 FT

PLAN

NO.	DATE	BY	REVISION
1			AS SHOWN

PLAN

NO.	DATE	BY	REVISION
1			AS SHOWN



WILMINGTON  
 VT ROUTE 100  
 SHEET 2 OF 10