

INDEX OF SHEETS

SHEET NO. 1	TITLE PAGE
2-2A	TYPICAL CROSS-SECTION OF IMPROVEMENT
3	BANKING AND WIDENING TABLES
4-7	PLAN AND PROFILE
8	5-28 PIPE CULVERTS
9	5-30 GUARD RAIL
10	5-30A BOUNDARY MARKERS
11	5-40 BARRICADES, SIGNS & LIGHTS
12	5-41 ROUNDING CUT SLOPES
13-30	CROSS SECTIONS

STANDARD STRUCTURE SHEETS
APPROVED BY THE CHIEF ENGINEER, V.S.D.H.

5-28	APRIL 26, 1941
5-30	MAY 12, 1941
5-30A	APRIL 19, 1941
5-40	DEC. 18, 1945

2 1/2" CRUSHED GRAVEL MIXED-IN-PLACE
SURFACE COURSE WITH CUT-BACK ASPHALT &
PRIME COAT OF REFINED TAR.

STATE OF VERMONT
STATE HIGHWAY DEPARTMENT

PLAN AND PROFILE OF PROPOSED
STATE HIGHWAY

TOWN OF WILMINGTON

VERMONT ROUTE 8
WILMINGTON — DOVER ROAD

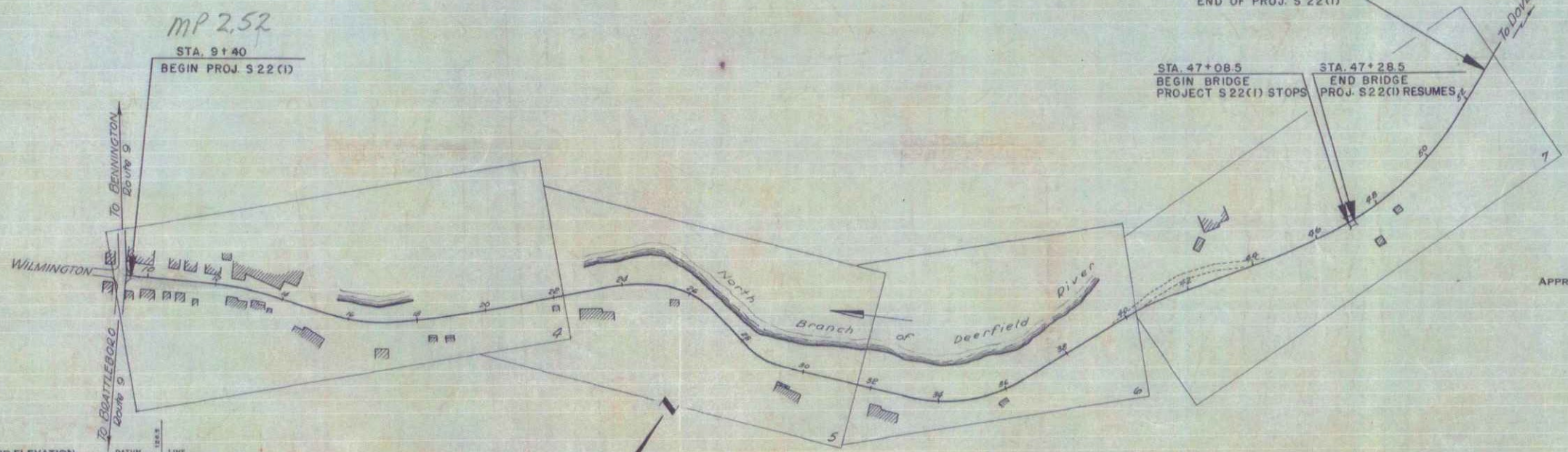
BEGINNING AT A POINT AT THE INTERSECTION OF VERMONT ROUTES 8 & 9
IN WILMINGTON VILLAGE & EXTENDING NORTHEASTERLY ON ROUTE 8
4339.1 FEET, EXCLUDING BRIDGE STA. 47+08.5 TO STA. 47+28.5

LENGTH OF PROJECT — 4339.1 FT. = 0.822 MI.

FED. ROAD DIST. NO.	STATE	5	FISCAL YEAR	1946	TOTAL SHEETS	30
9	Vt.	220	1946		1	30



Route: VT100
Project: S22(1)
Date: 08/09/1946
PIN: 0176117



COUNTY	WILMINGTON
TOWN	WILMINGTON
FENCE	
UNFENCE	
GUARD	
TRAIL	
RAIL	
RETAIN	
CENT	
BURY	
CURB	
DROP	
TROL	
POWER	
TELEP	
TREES	
HEDGE	

PROJECT: WILMINGTON S 22 (1)
LENGTH: 0.822 MI.
YEAR: 1946
CONTRACTOR: M. J. BURNINGTON, JR.
LOCATION: BEGINNING AT A POINT AT THE INTERSECTION OF VT. RT. 8 & 9 IN WILMINGTON VILLAGE & EXTENDING NORTHEASTERLY ON RT. 8 4339.1 FT.
WILMINGTON S 22 (1)
Contractor: M. J. BURNINGTON, JR.
Record Plans
Construction Completed: June 24, 1949

GROUND ELEVATION	DATUM	LINE
GRADE ELEVATION	DATUM	LINE

DEFLECTION ANGLE	Δ
DEGREE OF CURVE	D
RADIUS OF CURVE	R
TANGENT DISTANCE	T
LENGTH OF CURVE	L
EXTERNAL DISTANCE	E
POINT OF INTERSECTION	P. I.
POINT OF CURVE	P. C.
POINT OF TANGENT	P. T.
POINT ON TANGENT	P. O. T.

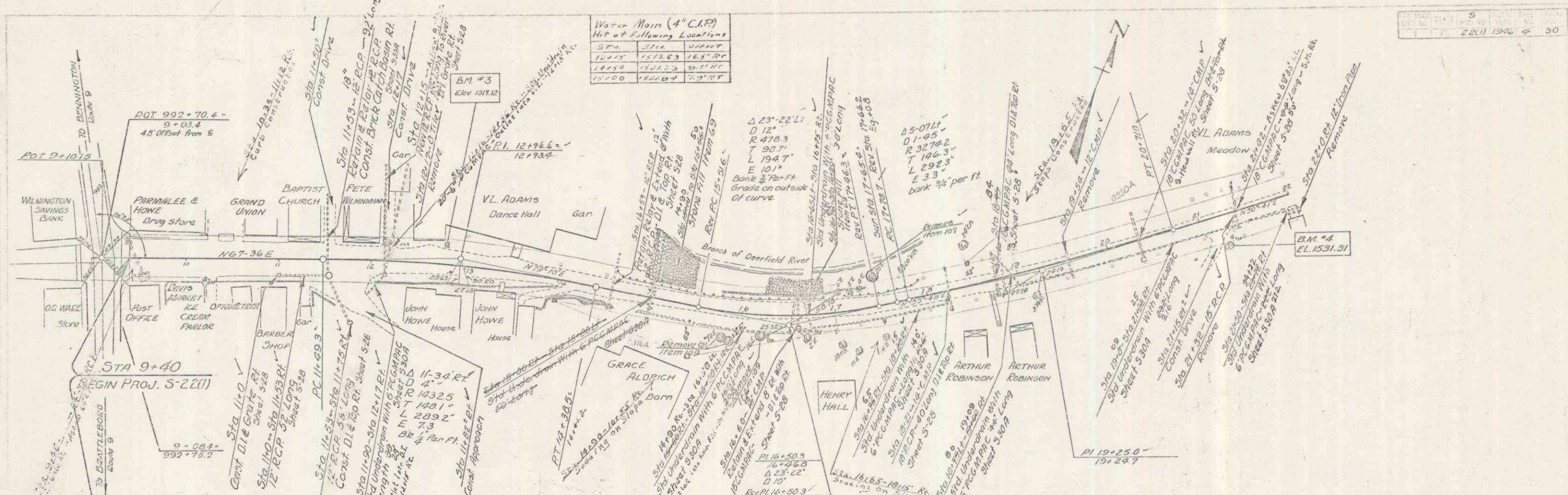
RECORD PLAN OF
WILMINGTON S22(1)
Prepared by B.P. Murphy and A.D. Aldrich
Resident Engineer W.B. McAllister
Contractor M.J. Burnington, Jr.
Superintendent H.A. Blanchard

THESE PLANS ARE SUBJECT TO SUCH REVISIONS AS MAY BE REQUIRED BY THE PUBLIC ROADS ADMINISTRATION OR THE COMMISSIONER OF HIGHWAYS.
CONSTRUCTION IS TO BE CARRIED ON IN ACCORDANCE WITH THE PLANS AND THE STANDARD ROAD AND BRIDGE SPECIFICATIONS OF 1936 AS APPROVED DECEMBER 28TH, 1936 BY THE PUBLIC ROADS ADMINISTRATION INCLUDING ALL SUBSEQUENT APPROVED REVISIONS AND SUCH REVISED SPECIFICATIONS AND SPECIAL PROVISIONS AS ARE SUBMITTED WITH THE PLANS.

APPROVED: August 9, 1946
H. S. Sargent
COMMISSIONER OF HIGHWAYS
SUBMITTED BY ORDER OF THE STATE HIGHWAY BOARD

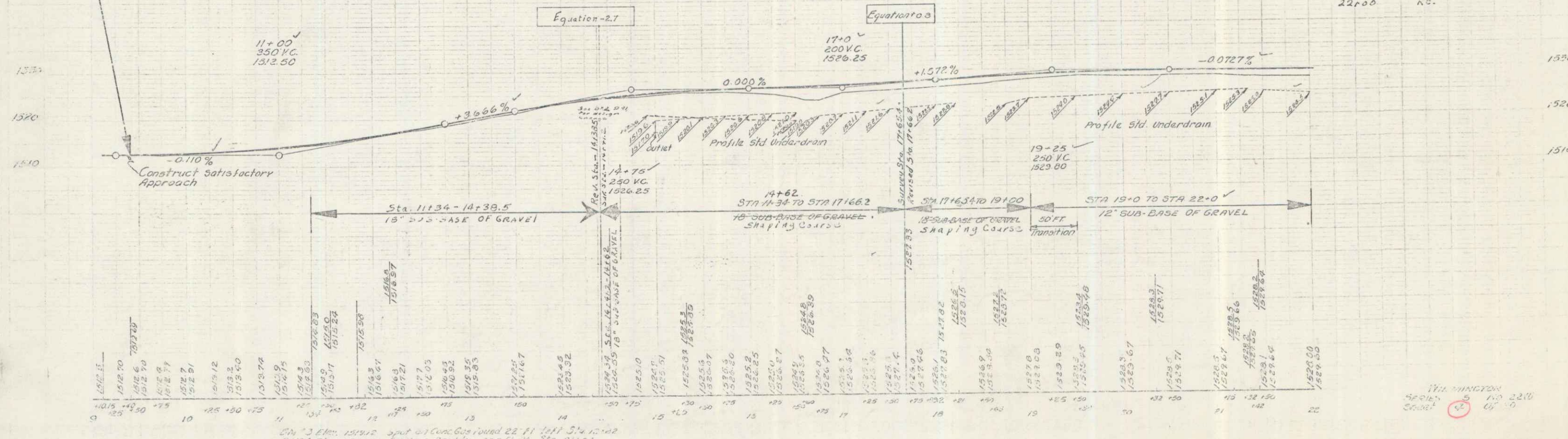
RECOMMENDED FOR APPROVAL
DISTRICT ENGINEER
PUBLIC ROADS ADMINISTRATION
FEDERAL WORKS AGENCY
APPROVED
DIVISION ENGINEER
PUBLIC ROADS ADMINISTRATION
FEDERAL WORKS AGENCY

APPROVED: August 9, 1946
B. P. Murphy
HIGHWAY ENGINEER
APPROVED: August 6, 1946
W. B. McAllister
DISTRICT HIGHWAY COMMISSIONER
SERIES 5 No. 22-1 FILED
SHEET 1 OF 30



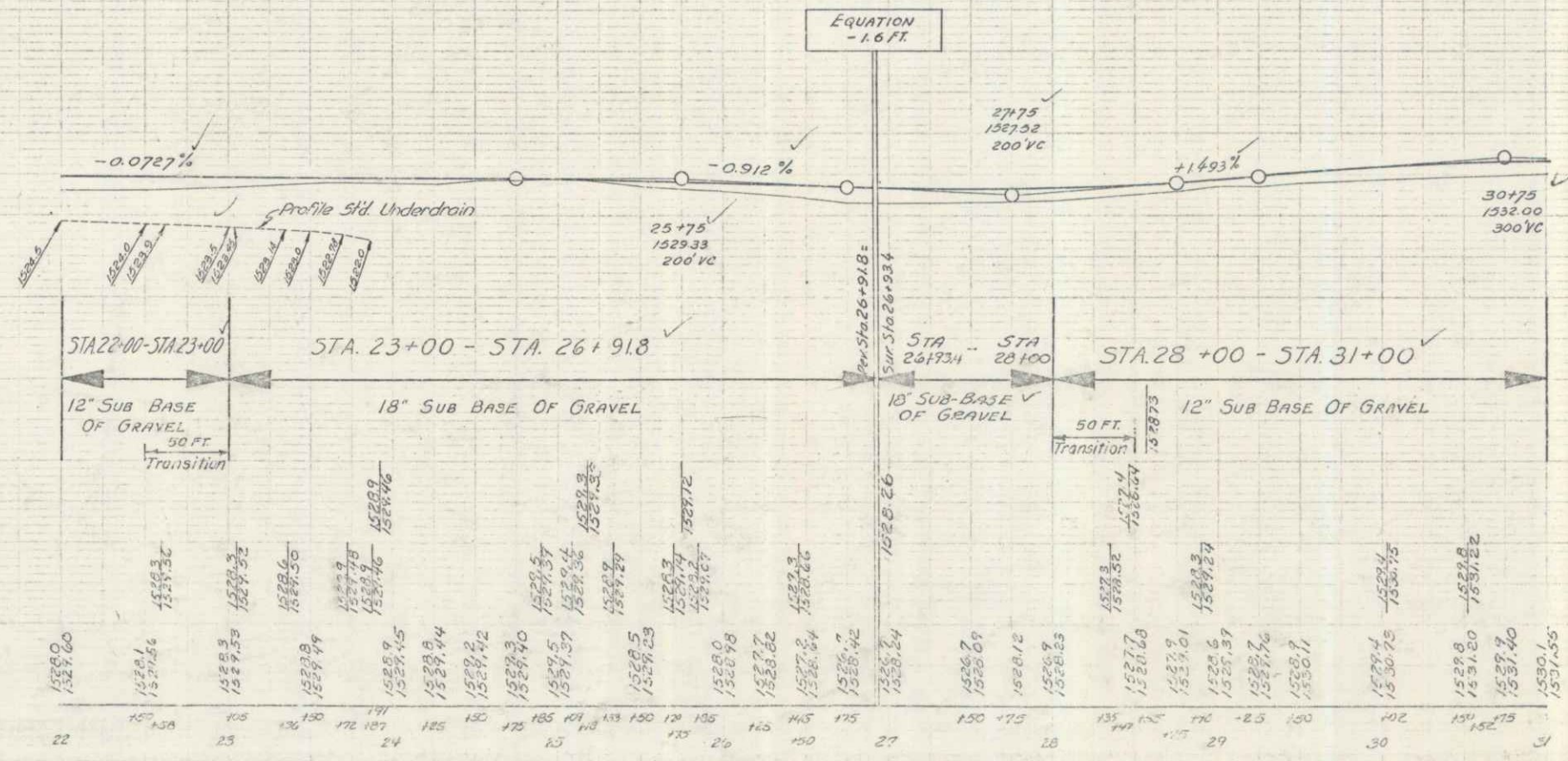
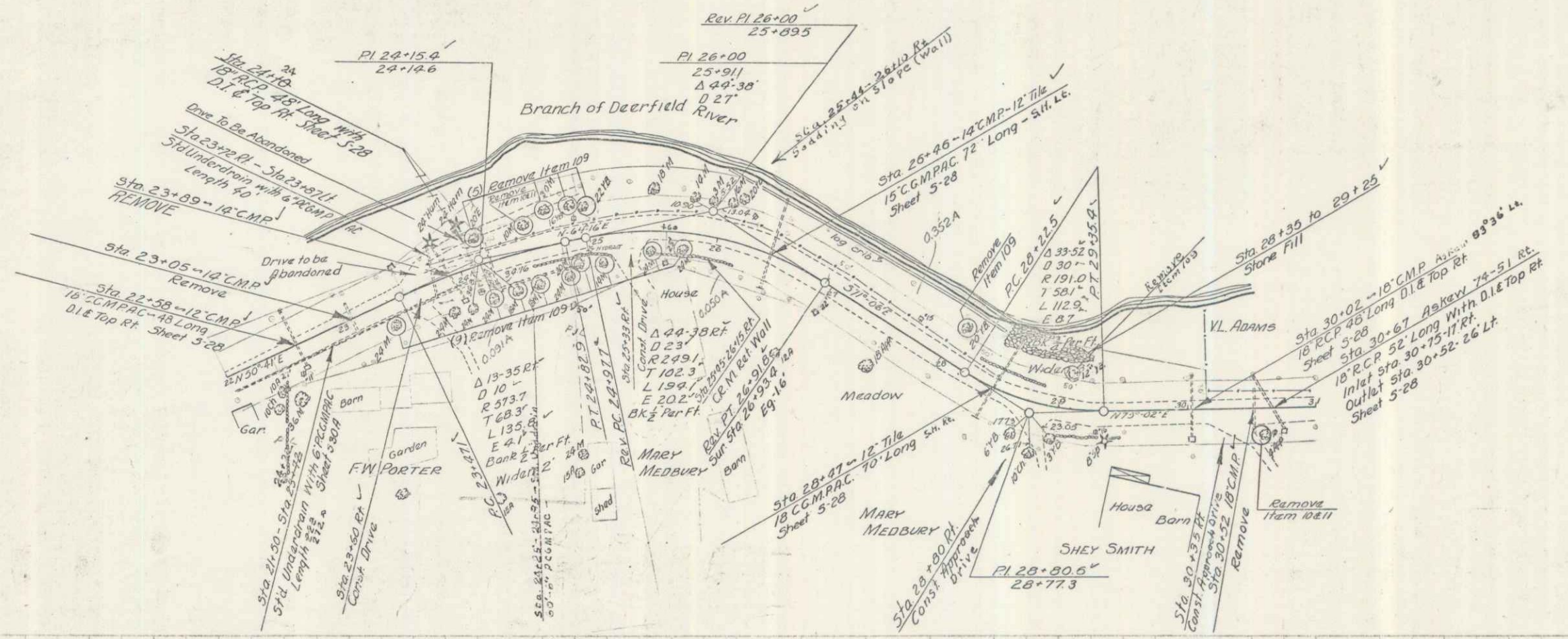
Legend:
Boundary Markers □

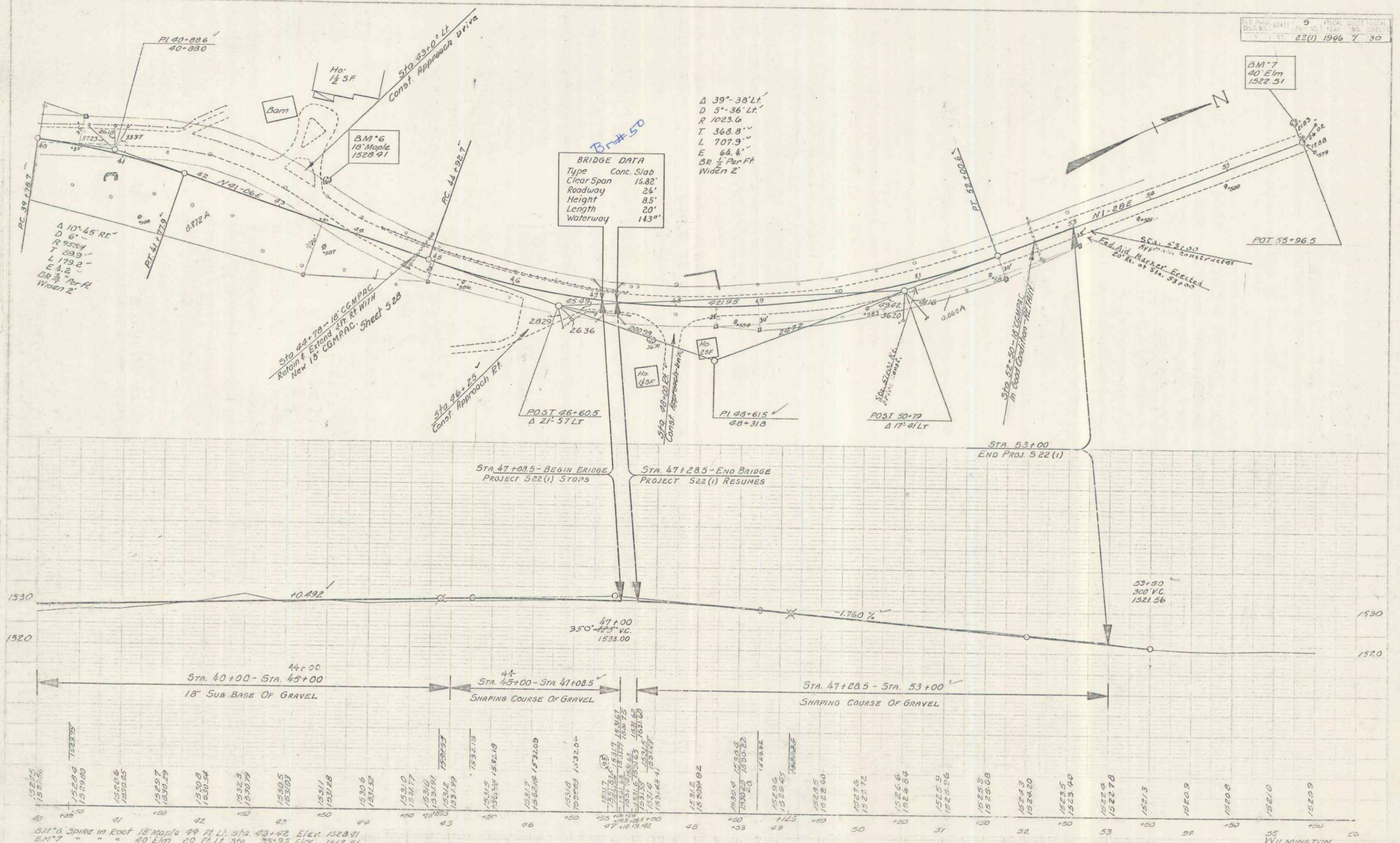
Drives Constructed
Sta. Position
14+15 Kt.
22+00 Ac.



Sta. 3 Elev. 1519.12 Spot on Conc. Gas Found 22' 11' 10\"/>

WILMINGTON
5621
22(1) 1946 4 30





BRIDGE DATA

Type	Conc. Slab
Clear Span	16.82'
Roadway	24'
Height	8.5'
Length	20'
Waterway	143"

Δ 39°-38' LT.
 D 5°-36' LT.
 R 1023.6
 T 368.8
 L 707.9
 E 64.4
 BE 1/2 Per FT
 Widen 2'

Δ 10°-45' RT.
 D 6°-
 R 925.4
 T 89.9
 L 179.2
 E 4.2
 BE 1/2 Per FT
 Widen 2'

BM 6 Spire in Roof 18 Maple 49 Ft. Lt. Sta. 43+42 Elev. 1528.91
 B.M. 7 " " 40 Elm 20 Ft. Lt. Sta. 35+35 Elev. 1522.51

40	1521.5	1521.5
41	1522.8	1522.8
42	1520.6	1520.6
43	1520.5	1520.5
44	1520.7	1520.7
45	1520.8	1520.8
46	1520.5	1520.5
47	1520.5	1520.5
48	1520.5	1520.5
49	1520.5	1520.5
50	1520.5	1520.5
51	1520.5	1520.5
52	1520.5	1520.5
53	1520.5	1520.5
54	1520.5	1520.5
55	1520.5	1520.5

5