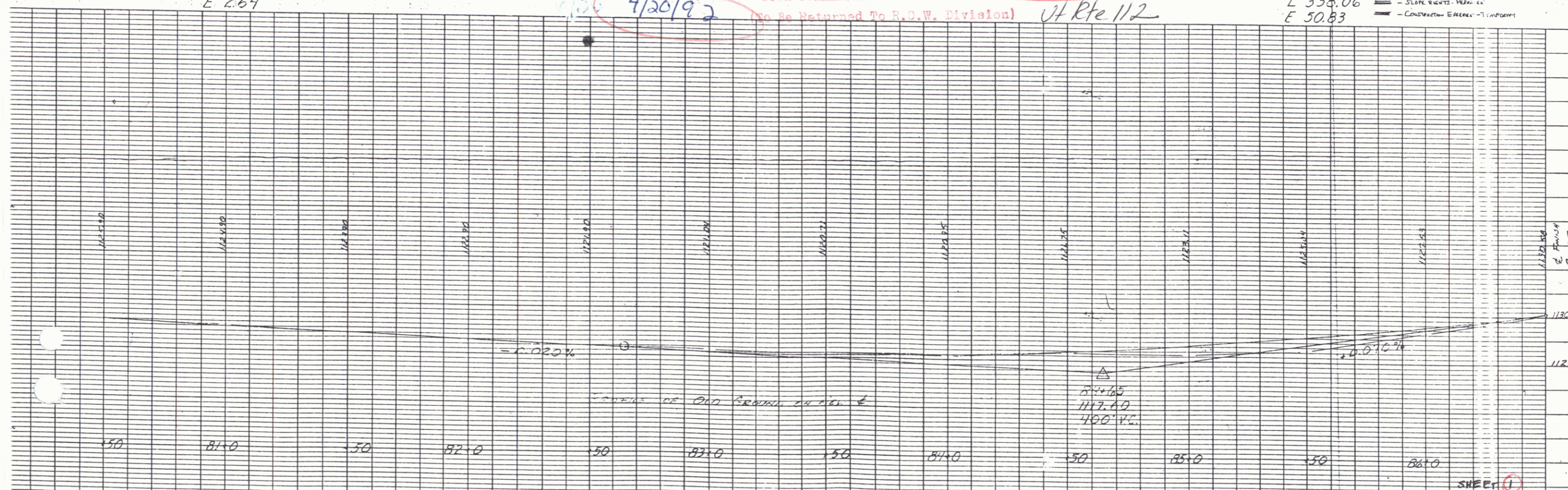
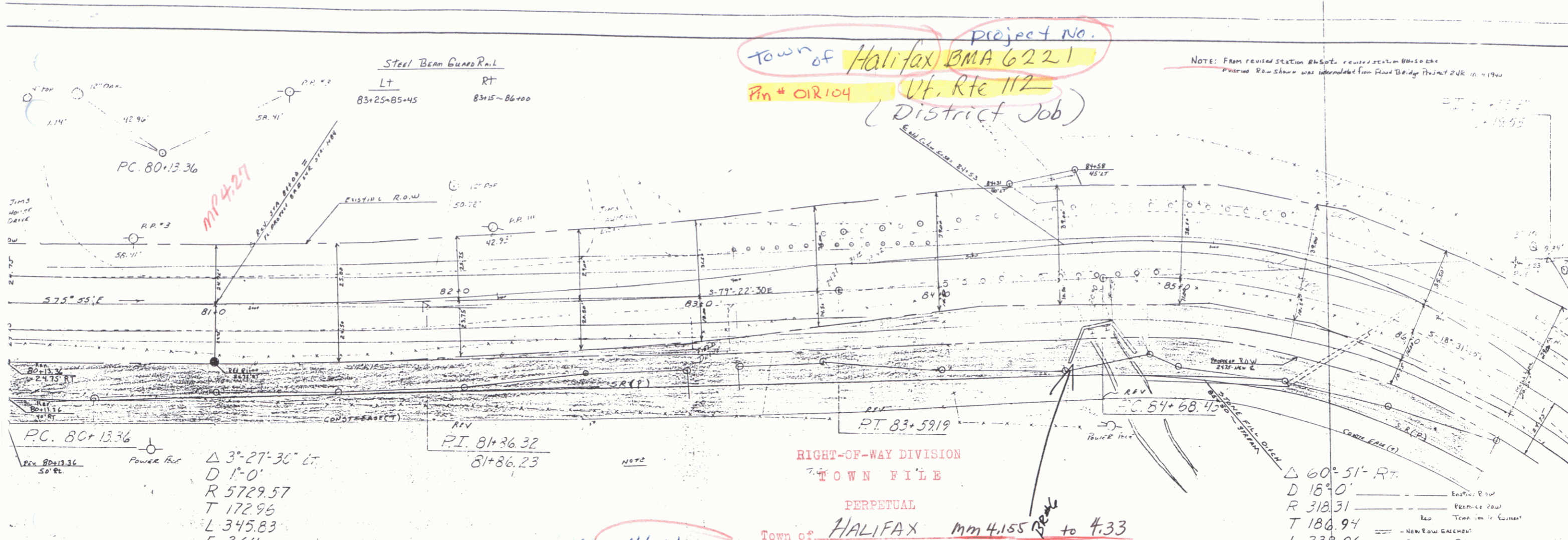


Project No.
 Town of Halifax BMA 6221
 Pn # 01R104 Ut. Rte 112
 (District Job)

NOTE: From revised station BMA 6221, revised station BMA 6221
 Previous Row shown was intended for Road Bridge Project 20R in 1990

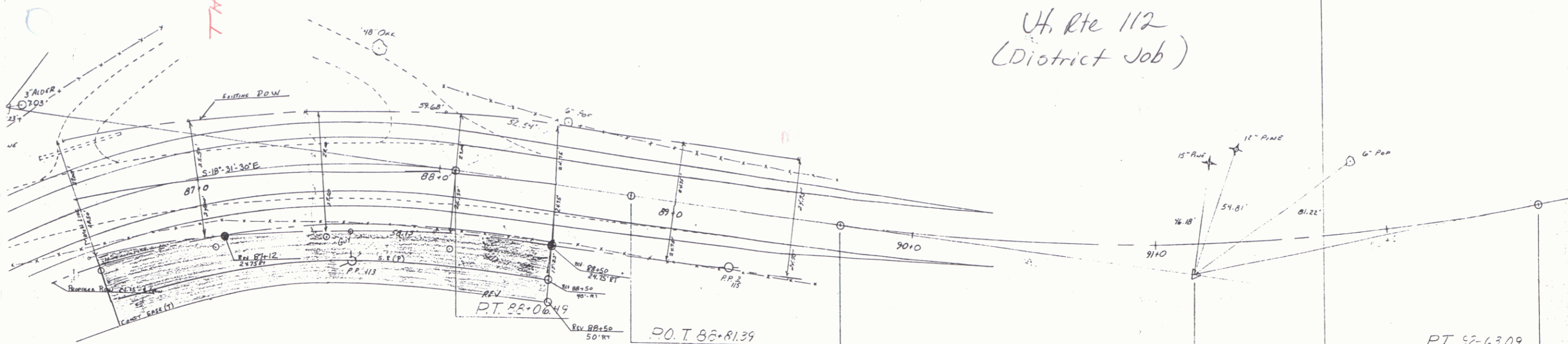


SHEET 1
 BMA 6221

P.I. 86+55.37
86+19.55

TN 27

Halifax BMA 6221
Ut. Rte 112
(District Job)



Δ 60°-51' Rt
D 18°-0'
R 318.31
T 186.94
L 338.06
E 50.83

Δ 19°-02'-30' Lt
D 6°-30'
R 881.46
T 147.83
L 292.95
E 12.31

P.T. 92-63.09
RIGHT-OF-WAY DIVISION
TOWN FILE
PERPETUAL

Town of _____
(To Be Returned To R.O.W. Division)

