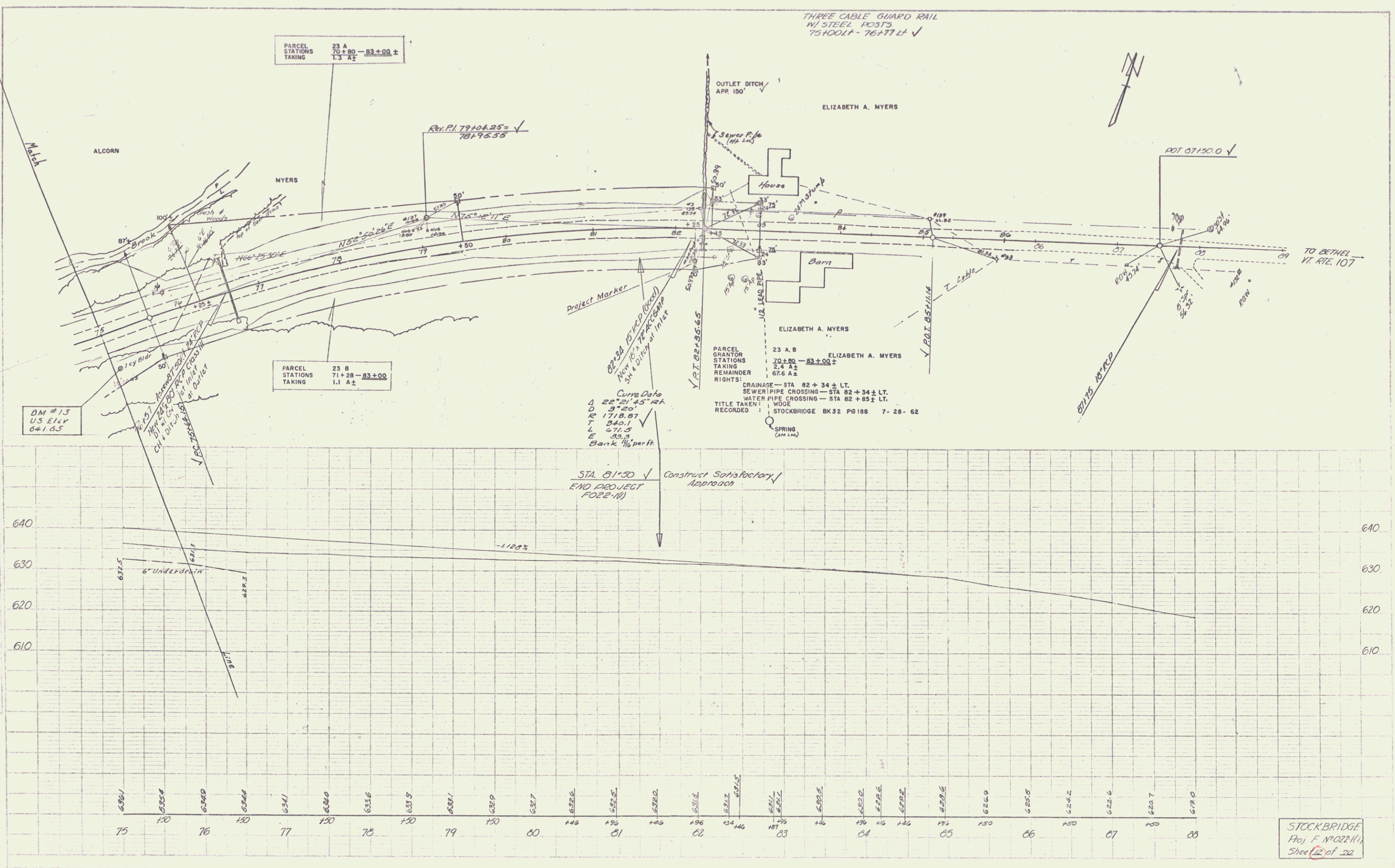


1-30
 2-30
 3-30
 4-30
 5-30
 6-30
 7-30
 8-30
 9-30
 10-30
 11-30
 12-30
 13-30
 14-30
 15-30
 16-30
 17-30
 18-30
 19-30
 20-30
 21-30
 22-30
 23-30
 24-30
 25-30
 26-30
 27-30
 28-30
 29-30
 30-30
 31-30
 32-30
 33-30
 34-30
 35-30
 36-30
 37-30
 38-30
 39-30
 40-30
 41-30
 42-30
 43-30
 44-30
 45-30
 46-30
 47-30
 48-30
 49-30
 50-30
 51-30
 52-30
 53-30
 54-30
 55-30
 56-30
 57-30
 58-30
 59-30
 60-30
 61-30
 62-30
 63-30
 64-30
 65-30
 66-30
 67-30
 68-30
 69-30
 70-30
 71-30
 72-30
 73-30
 74-30
 75-30
 76-30
 77-30
 78-30
 79-30
 80-30
 81-30
 82-30
 83-30
 84-30
 85-30
 86-30
 87-30
 88-30
 89-30
 90-30
 91-30
 92-30
 93-30
 94-30
 95-30
 96-30
 97-30
 98-30
 99-30
 100-30

1-31
 2-31
 3-31
 4-31
 5-31
 6-31
 7-31
 8-31
 9-31
 10-31
 11-31
 12-31
 13-31
 14-31
 15-31
 16-31
 17-31
 18-31
 19-31
 20-31
 21-31
 22-31
 23-31
 24-31
 25-31
 26-31
 27-31
 28-31
 29-31
 30-31
 31-31
 32-31
 33-31
 34-31
 35-31
 36-31
 37-31
 38-31
 39-31
 40-31
 41-31
 42-31
 43-31
 44-31
 45-31
 46-31
 47-31
 48-31
 49-31
 50-31
 51-31
 52-31
 53-31
 54-31
 55-31
 56-31
 57-31
 58-31
 59-31
 60-31
 61-31
 62-31
 63-31
 64-31
 65-31
 66-31
 67-31
 68-31
 69-31
 70-31
 71-31
 72-31
 73-31
 74-31
 75-31
 76-31
 77-31
 78-31
 79-31
 80-31
 81-31
 82-31
 83-31
 84-31
 85-31
 86-31
 87-31
 88-31
 89-31
 90-31
 91-31
 92-31
 93-31
 94-31
 95-31
 96-31
 97-31
 98-31
 99-31
 100-31



PARCEL
 STATIONS
 TAKING
 23 A
 70+80 - 83+00 ±
 1.3 A ±

PARCEL
 STATIONS
 TAKING
 23 B
 71+28 - 83+00
 1.1 A ±

ELIZABETH A. MYERS
 PARCEL
 GRANTOR
 STATIONS
 TAKING
 REMAINDER
 RIGHTS:
 CRAINAGE - STA 82+34 ± LT.
 SEWER PIPE CROSSING - STA 82+34 ± LT.
 WATER PIPE CROSSING - STA 82+83 ± LT.
 TITLE TAKEN: WDOE
 RECORDED: STOCKBRIDGE BK 32 PG 188 7-28-62
 SPRING (AM L&A)

Curve Data
 D 26° 21' 45" 124'
 R 97+20'
 T 1718.87'
 L 340.1'
 E 671.3'
 Bank 1/2 part ft

STA. 81+50
 END PROJECT
 F022-11) Construct Satisfactory
 Approach

STOCKBRIDGE
 Proj. F. N° 022(11)
 Sheet 12 of 22