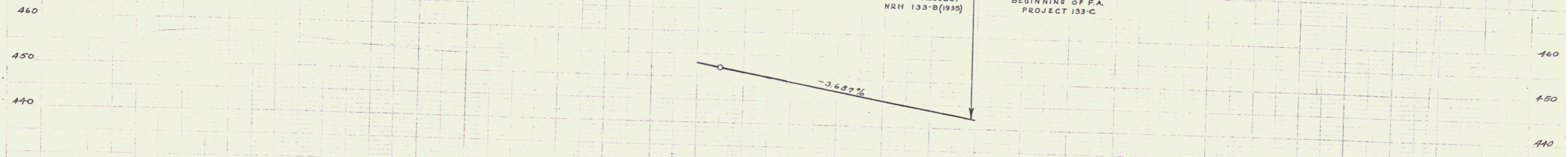
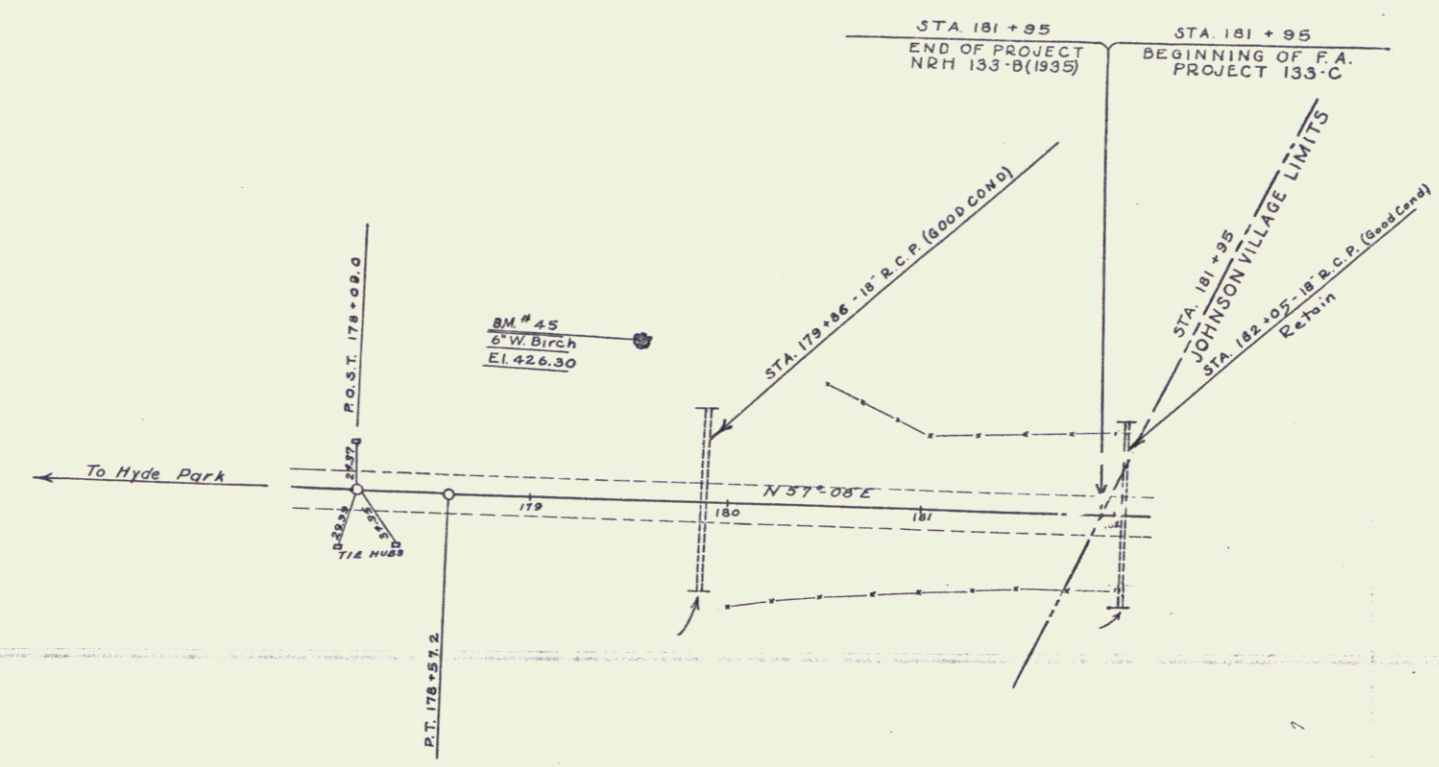


TRACED BY J.F.H. SPEAR

WOOD WANDS



B.M. #45 SPIKE IN ROOT 6" W BIRCH 85' LT STA. 179+50 EL. 426.30

179	179+50	180	180+50	181	181+50	182
428.00	452.19	449.35	447.51	445.44	443.03	441.98
428.21	452.38	449.56	447.72	445.87	443.23	442.16

C4

2

