

INDEX OF SHEETS

SHEET NO. 1	TITLE PAGE	} 2 1/2" CRUSHED STONE SURFACE COURSE
2	TYPICAL CROSS-SECTION OF IMPROVEMENT	
3	BANKING AND WIDENING TABLES	
4	PLAN AND PROFILE SHEET	
5		
6		
7	3.30 GUIDE POST OF ROAD	
8	BARRICADES, SIGNS AND LIGHTS 58-11	

**STATE OF VERMONT
STATE HIGHWAY DEPARTMENT**

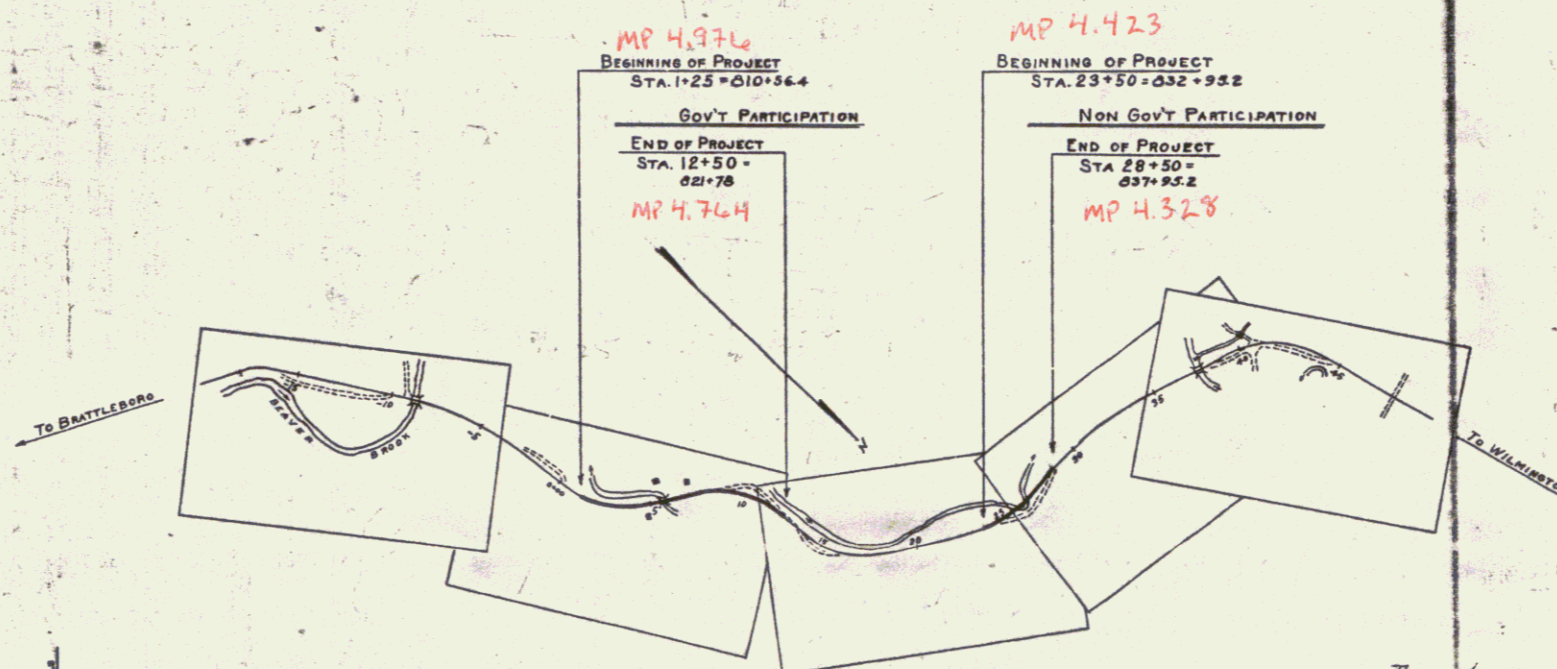
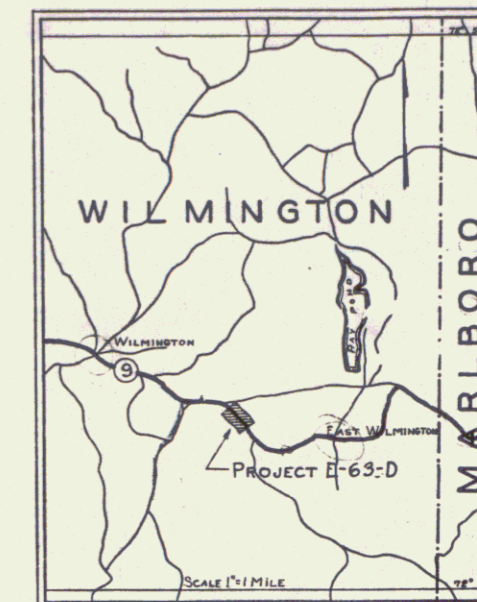
**PLAN AND PROFILE OF PROPOSED
STATE HIGHWAY**

FEDERAL AID PROJECT

TOWN OF WILMINGTON

BRATTLEBORO-BENNINGTON ROAD
FROM 955 FT. WEST OF A CONCRETE ARCH
BRIDGE OVER BEAVER BROOK WESTERLY 0.212 MILES
GOVERNMENT PARTICIPATION
LENGTH OF PROJECT 1121.6 FT. = 0.212 MILES

FED. ROAD DIST. NO.	STATE	FED. AID PROJ. NO.	FISCAL YEAR	SHEET NO.	TOTAL SHEETS
9	VT.	63-C	1936	1	



RIGHT-OF-WAY DIVISION
TOWN FILE
PERPETUAL
Town of VT 9
(To Be Returned To R.O.W. Division)

APPROVED: October 21 1932
H.S. Sargent
COMMISSIONER OF HIGHWAYS

SUBMITTED BY ORDER OF THE STATE HIGHWAY BOARD
Pin # 00R978
Route VT 9
Date 4/1/1932

These plans are subject to such revisions as may be required by the Bureau of Public Roads and the Commissioner of Highways.
Construction is to be carried on in accordance with the plans and standard road and bridge specifications of 1930 including all subsequent approved revisions, the National Recovery Act special provisions, and such revised specifications and special provisions as are submitted with the plans.

CONVENTIONAL SIGNS

COUNTY LINE	GROUND ELEVATION	DATUM	LINE
TOWN LINE	FENCE LINE	GRADE ELEVATION	DATUM
STONE WALL	UNFENCED PROPERTY	RAILROAD	TRAVELED WAY
GUARD RAIL	RETAINING WALL	CENTER LINE	SURVEY LINE
CULVERT	DROP INLET	TROLLEY POLE	POWER POLE
TELEPHONE POLE	TREES		

CURVE DATA

DEFLECTION ANGLE	Δ
DEGREE OF CURVE	D
RADIUS OF CURVE	R
TANGENT DISTANCE	T
LENGTH OF CURVE	L
EXTERNAL DISTANCE	E
POINT OF INTERSECTION	P. I.
POINT OF CURVE	P. C.
POINT OF TANGENT	P. T.
POINT ON TANGENT	P. O. T.

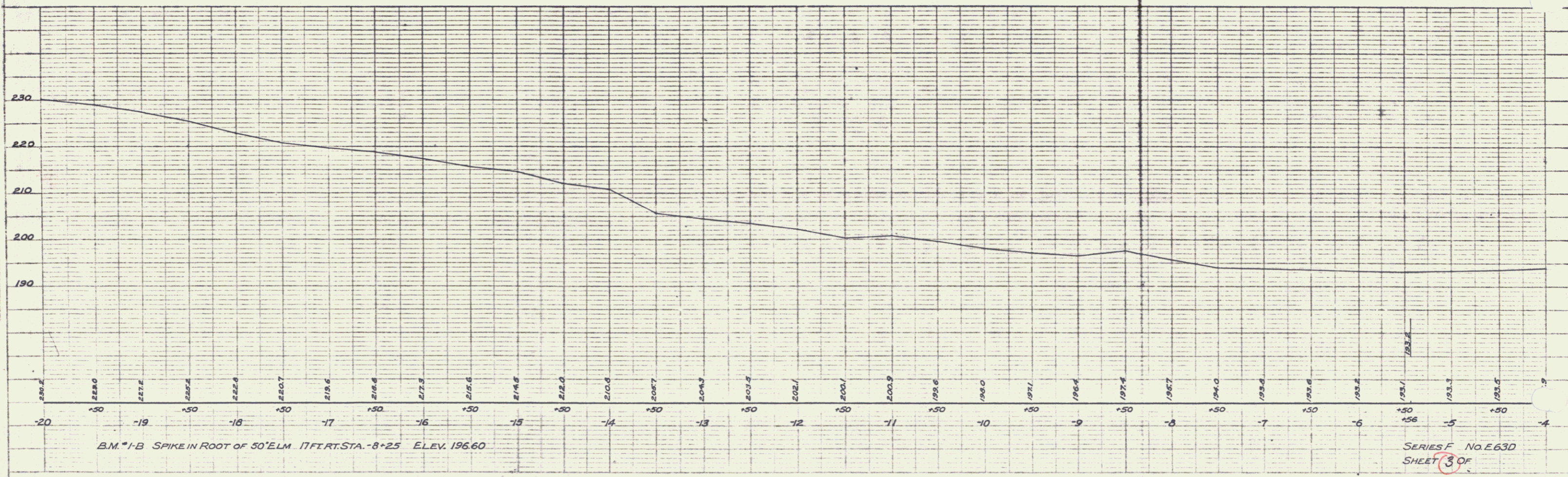
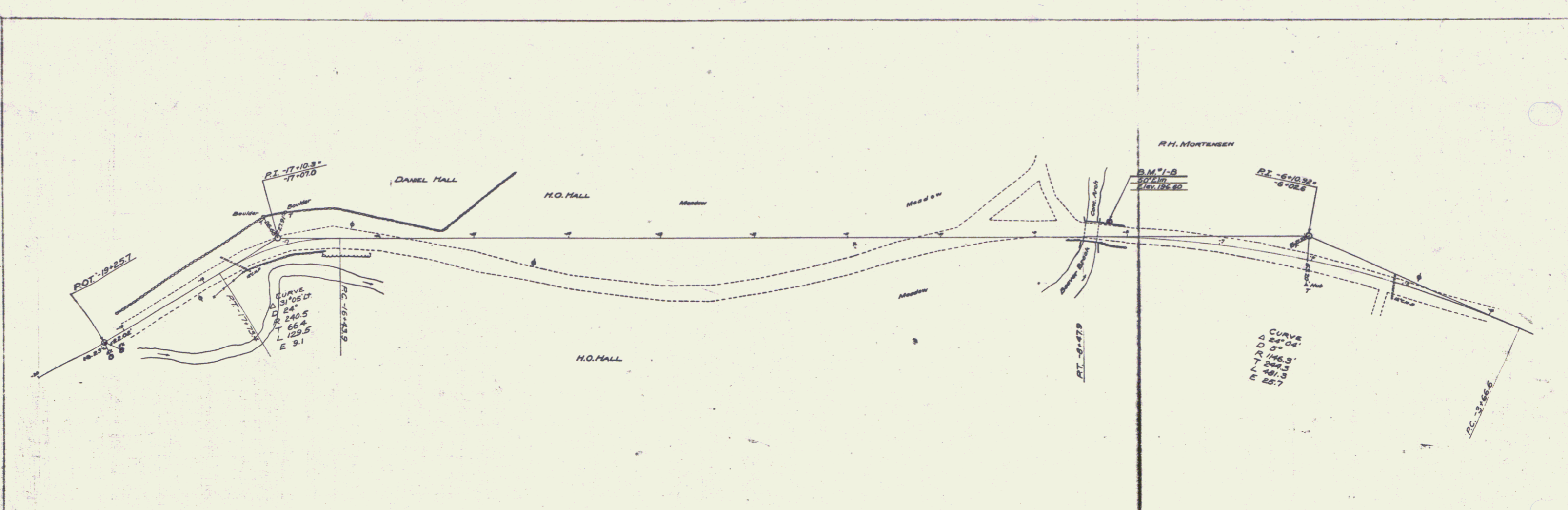
SCALES
TITLE 1" = 500'
PLAN 1" = 50'
PROFILE Hor 1" = 50'
Ver 1" = 10'

CORRECT October 1932
A. J. Channing
ROAD ENGINEER

SERIES F. NO. 63 OF FILED
SHEET 1 OF

PLAN
 1" = 40'
 DATE: 1957
 BY: [unclear]
 CHECKED: [unclear]

PROFILE
 1" = 10'
 DATE: 1957
 BY: [unclear]
 CHECKED: [unclear]

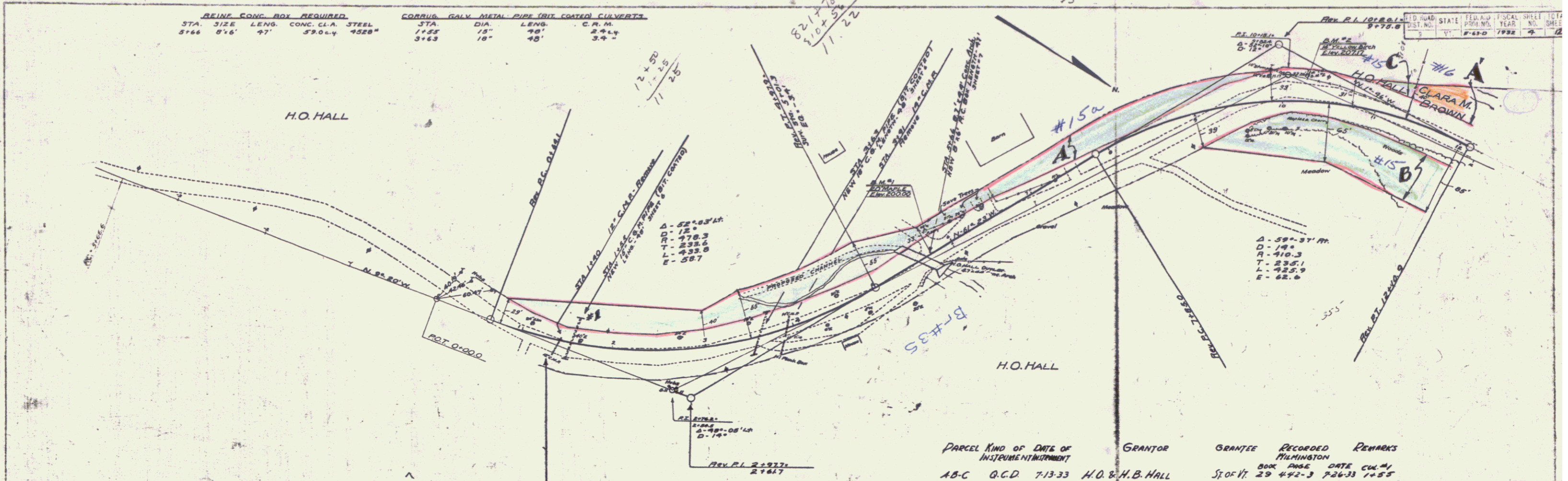


BM - 1-B SPIKE IN ROOT OF 50' ELM. 17 FT. STA. - 8+25 ELEV. 196.60

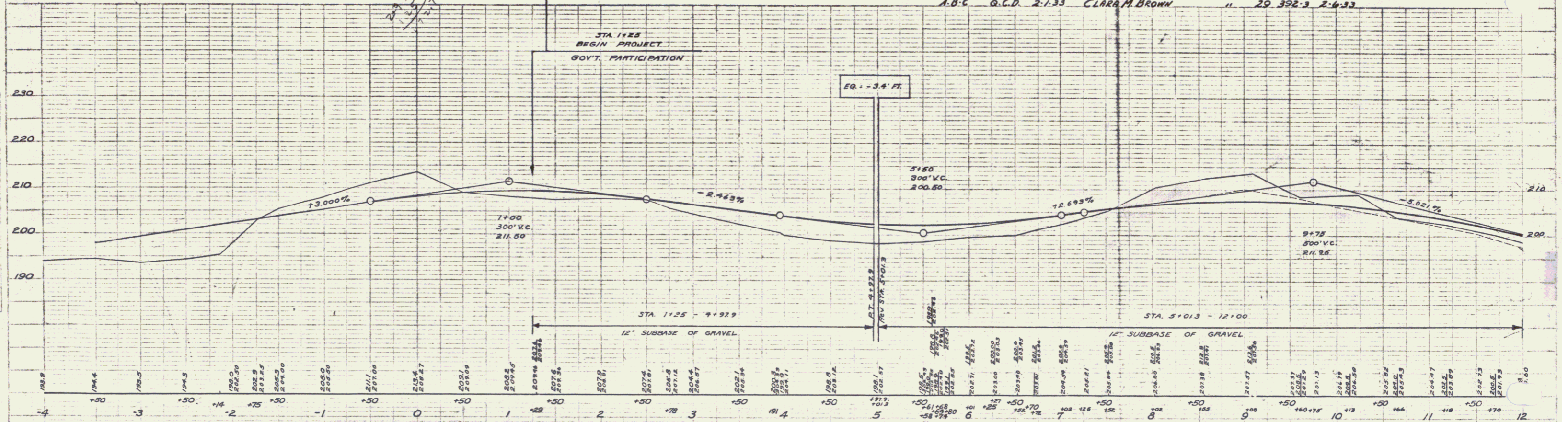
SERIES F NO. E 63D
 SHEET 3 OF 3

PLATE 1 - PLAN PROFILE

REIN. CONC. BOX REQUIRED.				CORRUS. GALV. METAL PIPE BRIT. COATED CULVERTS.				
STA.	SIZE	LENG.	CONC. CL. A. STEEL	STA.	DIA.	LENG.	C.F.M.	
5+66	8'x6'	97'	59.0x4	4528"	1+55	18"	90'	274.4
					3+63	18"	90'	374.4



PARCEL	KIND OF INSTRUMENT	DATE OF INSTRUMENT	GRANTOR	GRANTEE	RECORDED	REMARKS
A-B-C	G.C.D.	7-13-33	H.O. & H.B. HALL	ST. OF VT.	29 442-3	7-26-33 1+55
A-B-C	G.C.D.	2-1-33	CLARA M. BROWN	"	29 392-3	2-6-33

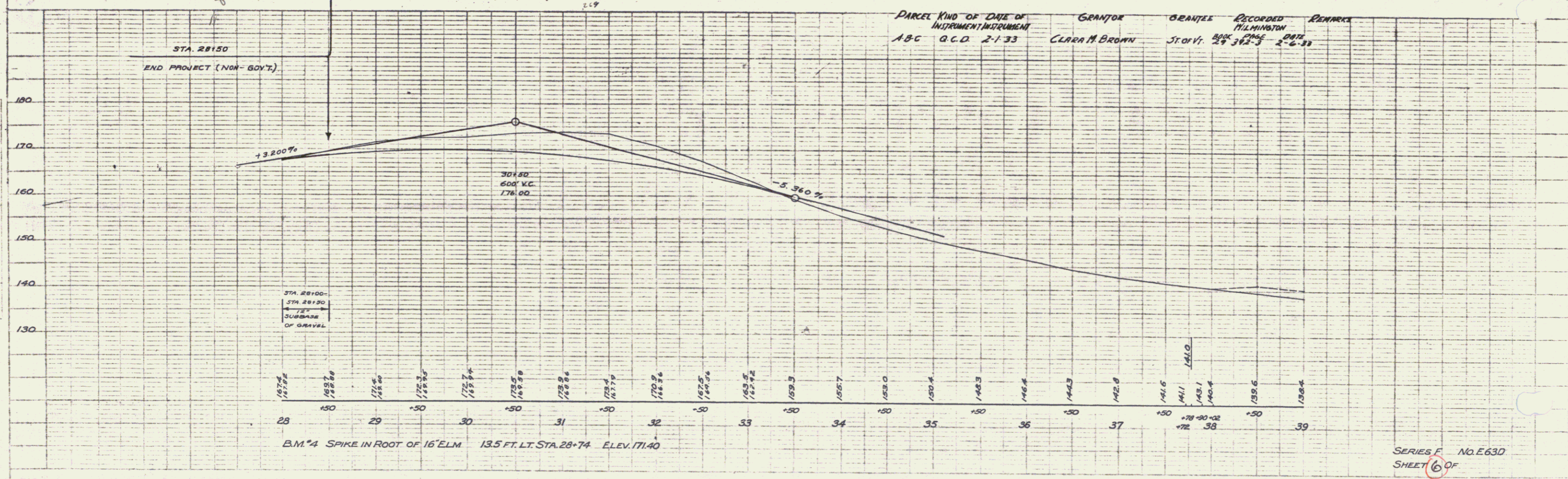
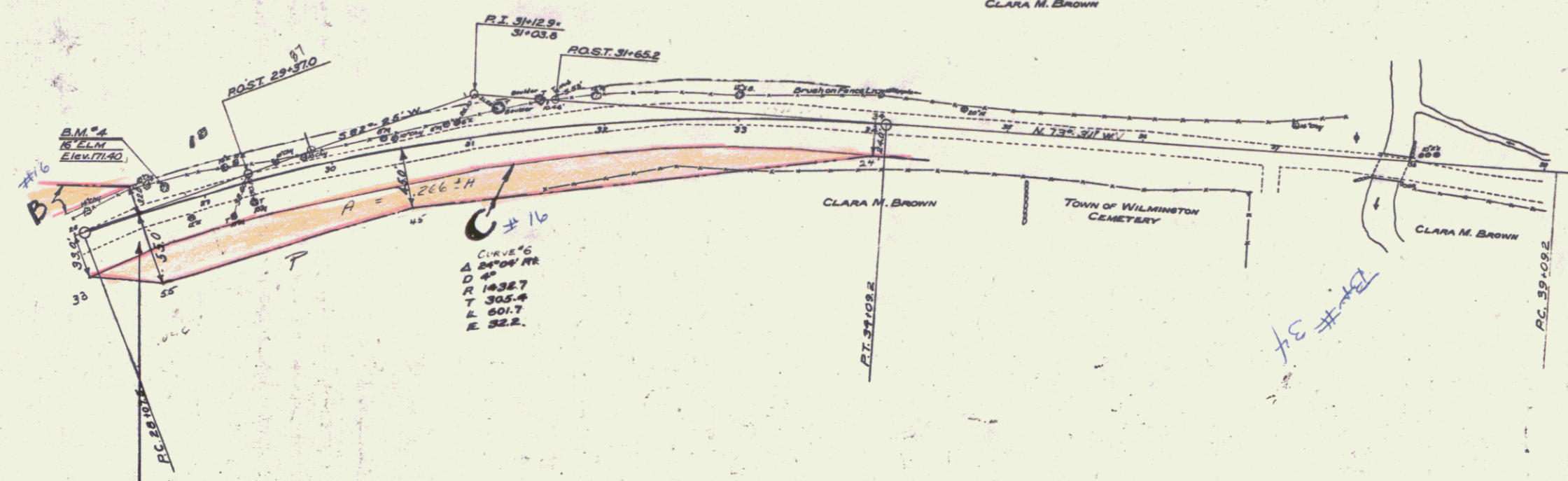


B.M. #1 SPIKE IN ROOT OF 20' MAPLE 31 FT. LT. STA. 5+79 ELEV. 200.00
 B.M. #2 SPIKE IN ROOT OF 14" YELLOW BIRCH 52 FT. LT. STA. 10+21 ELEV. 207.17

SERIES F No. E 63D
 SHEET 7 OF 12

PLAN
 TOTAL 8000
 IN SQUARE FEET
 PER 1000 SQUARE FEET

PROFIT
 WITH 10% INTEREST
 ON THE BALANCE
 PAID TO THE CONTRACTOR



PARCEL	KIND OF INSTRUMENT	DATE OF INSTRUMENT	GRANTOR	GRANTEE	RECORDED IN WILMINGTON	REMARKS
ABC	Q.C.D.	2-1-33	CLARA M. BROWN	STONY	BOOK PAGE DATE	29 342-3 2-6-33

