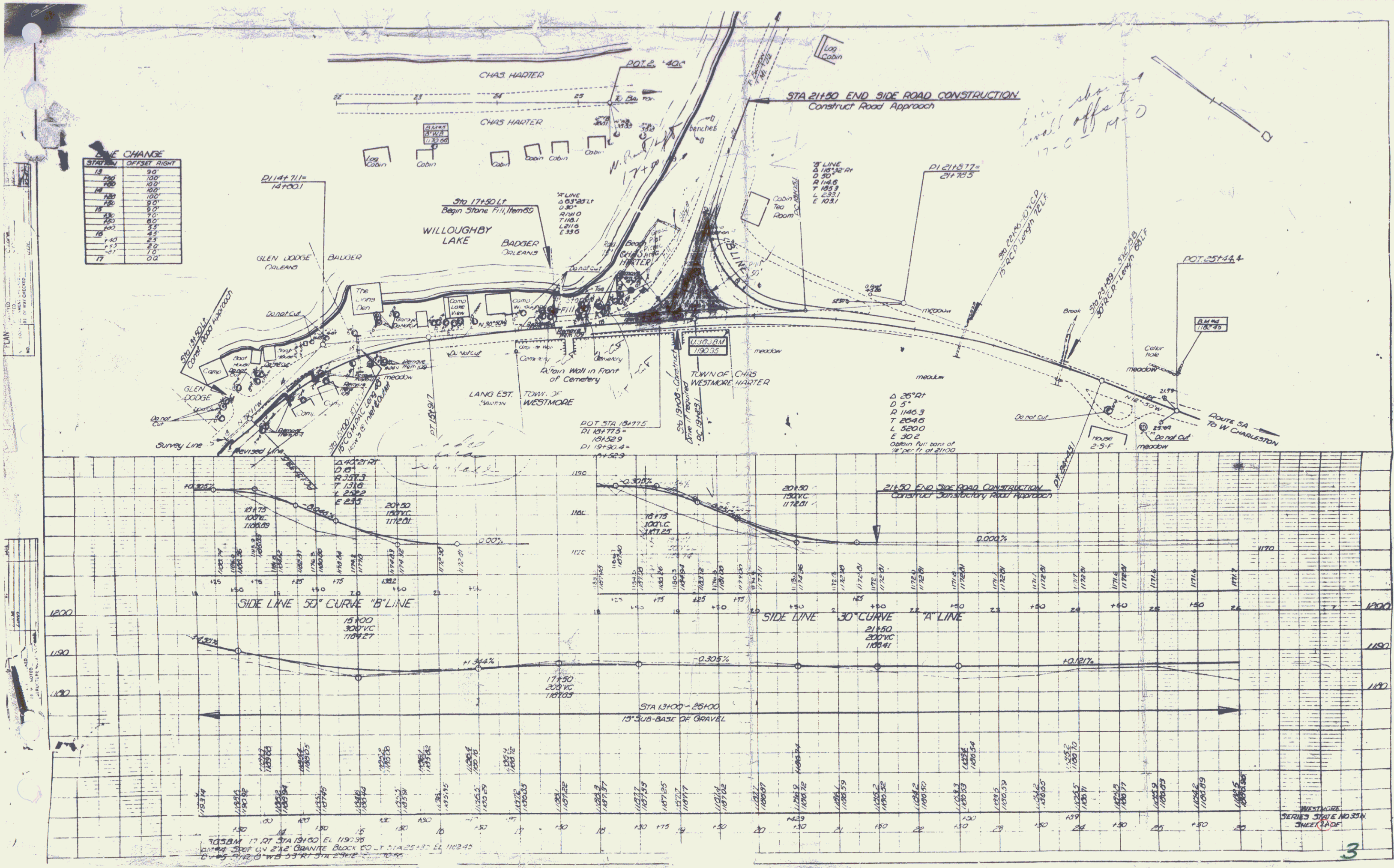


LINE CHANGE

STATION	OFFSET RIGHT
13	9.0'
14	10.0'
15	10.0'
16	10.0'
17	9.0'
18	9.0'
19	8.0'
20	7.5'
21	7.0'
22	6.5'
23	6.0'
24	5.5'
25	5.0'
26	4.5'
27	4.0'
28	3.5'
29	3.0'
30	2.5'
31	2.0'
32	1.5'
33	1.0'
34	0.5'
35	0.0'



Handwritten note:
 line should
 well offset
 17-0-14-0

WESTMORE
 SERIES STATE NO. 35-N
 SHEET 3403