

POOR ORIGINAL COPY

Pin 00R919
DATE 6/16/1936

Route US 2
Project FAP 128C

STATE HIGHWAY DEPARTMENT

PLAN AND PROFILE OF PROPOSED STATE HIGHWAY

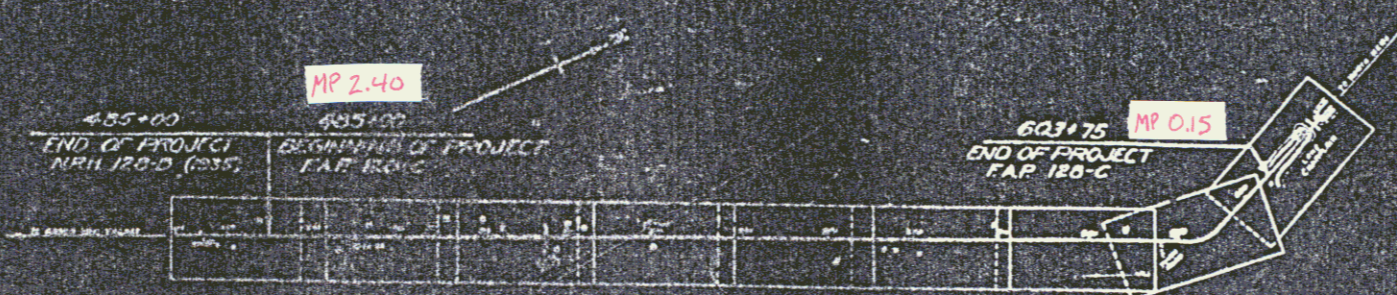
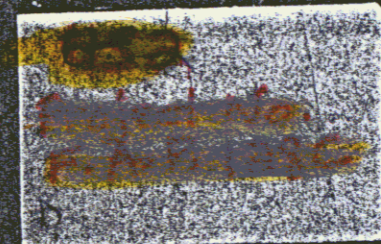
FEDERAL AID PROJECT

TOWN OF GRAND ISLE

GRAND ISLE - NORTH HERO ROAD

BEGINNING AT A POINT 100 FT. NORTHERLY OF THE RESIDENCE OF JOSEPH SOCIA AND CONTINUING NORTHERLY 2.249 MILES

TOTAL LENGTH OF PROJECT 11,677 FT. - 2.249 MILES



RECORD PLANS

APPROVED: *[Signature]*
COMMISSIONER OF HIGHWAYS
REVIEWED BY CHIEF OF THE STATE HIGHWAY BOARD

These plans are subject to such revisions as may be required by the Bureau of Public Roads or the Commissioner of Highways. Construction is to be carried out in accordance with the plans and standard road and bridge specifications of FASD including all subsequent approved revisions, and such revised specifications and special provisions as are submitted with the plans.

Attention of Contractors is called to the fact that the State Highway Board reserves the right to award the project, in whole or in some part, to the lowest bidder, and that it reserves the right to award 15% of the amount of contract.

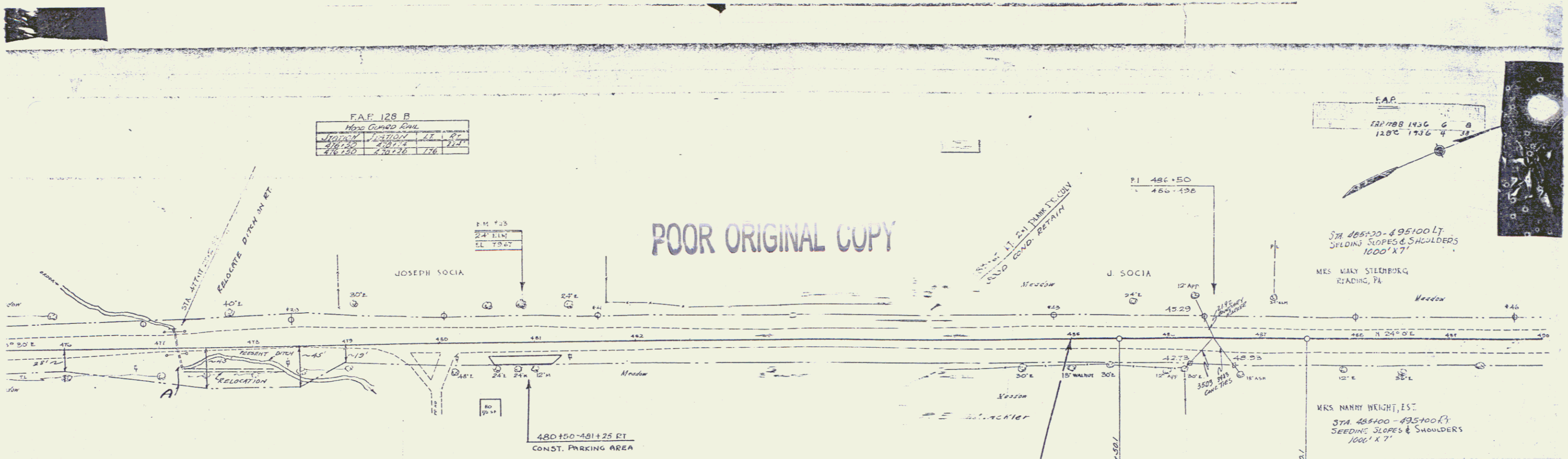
CONVENTIONAL SYMBOLS

ROADWAY SURVEYING	1-1
ADJUSTED SURVEYING	1-2
GENERAL NOTES	1-3
PROPOSED ROADWAY	1-4
EXISTING ROADWAY	1-5
PROPOSED BRIDGE	1-6
EXISTING BRIDGE	1-7
PROPOSED TUNNEL	1-8
EXISTING TUNNEL	1-9
PROPOSED CUT	1-10
EXISTING CUT	1-11
PROPOSED FILL	1-12
EXISTING FILL	1-13
PROPOSED DRAINAGE	1-14
EXISTING DRAINAGE	1-15
PROPOSED UTILITY	1-16
EXISTING UTILITY	1-17
PROPOSED EROSION CONTROL	1-18
EXISTING EROSION CONTROL	1-19
PROPOSED LANDSCAPING	1-20
EXISTING LANDSCAPING	1-21
PROPOSED SIGNAGE	1-22
EXISTING SIGNAGE	1-23
PROPOSED LIGHTING	1-24
EXISTING LIGHTING	1-25
PROPOSED FENCE	1-26
EXISTING FENCE	1-27
PROPOSED BARRIER	1-28
EXISTING BARRIER	1-29
PROPOSED CURB	1-30
EXISTING CURB	1-31
PROPOSED SIDEWALK	1-32
EXISTING SIDEWALK	1-33
PROPOSED BIKEWAY	1-34
EXISTING BIKEWAY	1-35
PROPOSED TRAIL	1-36
EXISTING TRAIL	1-37
PROPOSED PATH	1-38
EXISTING PATH	1-39
PROPOSED WALKWAY	1-40
EXISTING WALKWAY	1-41
PROPOSED DRIVEWAY	1-42
EXISTING DRIVEWAY	1-43
PROPOSED RAMP	1-44
EXISTING RAMP	1-45
PROPOSED ON-RAMP	1-46
EXISTING ON-RAMP	1-47
PROPOSED OFF-RAMP	1-48
EXISTING OFF-RAMP	1-49
PROPOSED INTERCHANGE	1-50
EXISTING INTERCHANGE	1-51
PROPOSED JUNCTION	1-52
EXISTING JUNCTION	1-53
PROPOSED DIVERSION	1-54
EXISTING DIVERSION	1-55
PROPOSED CLOSURE	1-56
EXISTING CLOSURE	1-57
PROPOSED DETOUR	1-58
EXISTING DETOUR	1-59
PROPOSED TRAFFIC CONTROL	1-60
EXISTING TRAFFIC CONTROL	1-61
PROPOSED SIGNAL	1-62
EXISTING SIGNAL	1-63
PROPOSED STOP SIGN	1-64
EXISTING STOP SIGN	1-65
PROPOSED SPEED LIMIT SIGN	1-66
EXISTING SPEED LIMIT SIGN	1-67
PROPOSED AHEAD SIGN	1-68
EXISTING AHEAD SIGN	1-69
PROPOSED PLATE	1-70
EXISTING PLATE	1-71
PROPOSED MARKING	1-72
EXISTING MARKING	1-73
PROPOSED PAINT	1-74
EXISTING PAINT	1-75
PROPOSED CURB PAINT	1-76
EXISTING CURB PAINT	1-77
PROPOSED SIDEWALK PAINT	1-78
EXISTING SIDEWALK PAINT	1-79
PROPOSED BIKEWAY PAINT	1-80
EXISTING BIKEWAY PAINT	1-81
PROPOSED TRAIL PAINT	1-82
EXISTING TRAIL PAINT	1-83
PROPOSED WALKWAY PAINT	1-84
EXISTING WALKWAY PAINT	1-85
PROPOSED DRIVEWAY PAINT	1-86
EXISTING DRIVEWAY PAINT	1-87
PROPOSED RAMP PAINT	1-88
EXISTING RAMP PAINT	1-89
PROPOSED ON-RAMP PAINT	1-90
EXISTING ON-RAMP PAINT	1-91
PROPOSED OFF-RAMP PAINT	1-92
EXISTING OFF-RAMP PAINT	1-93
PROPOSED INTERCHANGE PAINT	1-94
EXISTING INTERCHANGE PAINT	1-95
PROPOSED JUNCTION PAINT	1-96
EXISTING JUNCTION PAINT	1-97
PROPOSED DIVERSION PAINT	1-98
EXISTING DIVERSION PAINT	1-99
PROPOSED CLOSURE PAINT	1-100
EXISTING CLOSURE PAINT	1-101
PROPOSED DETOUR PAINT	1-102
EXISTING DETOUR PAINT	1-103
PROPOSED TRAFFIC CONTROL PAINT	1-104
EXISTING TRAFFIC CONTROL PAINT	1-105
PROPOSED SIGNAL PAINT	1-106
EXISTING SIGNAL PAINT	1-107
PROPOSED STOP SIGN PAINT	1-108
EXISTING STOP SIGN PAINT	1-109
PROPOSED SPEED LIMIT SIGN PAINT	1-110
EXISTING SPEED LIMIT SIGN PAINT	1-111
PROPOSED AHEAD SIGN PAINT	1-112
EXISTING AHEAD SIGN PAINT	1-113
PROPOSED PLATE PAINT	1-114
EXISTING PLATE PAINT	1-115
PROPOSED MARKING PAINT	1-116
EXISTING MARKING PAINT	1-117
PROPOSED PAINT PAINT	1-118
EXISTING PAINT PAINT	1-119
PROPOSED CURB PAINT PAINT	1-120
EXISTING CURB PAINT PAINT	1-121
PROPOSED SIDEWALK PAINT PAINT	1-122
EXISTING SIDEWALK PAINT PAINT	1-123
PROPOSED BIKEWAY PAINT PAINT	1-124
EXISTING BIKEWAY PAINT PAINT	1-125
PROPOSED TRAIL PAINT PAINT	1-126
EXISTING TRAIL PAINT PAINT	1-127
PROPOSED WALKWAY PAINT PAINT	1-128
EXISTING WALKWAY PAINT PAINT	1-129
PROPOSED DRIVEWAY PAINT PAINT	1-130
EXISTING DRIVEWAY PAINT PAINT	1-131
PROPOSED RAMP PAINT PAINT	1-132
EXISTING RAMP PAINT PAINT	1-133
PROPOSED ON-RAMP PAINT PAINT	1-134
EXISTING ON-RAMP PAINT PAINT	1-135
PROPOSED OFF-RAMP PAINT PAINT	1-136
EXISTING OFF-RAMP PAINT PAINT	1-137
PROPOSED INTERCHANGE PAINT PAINT	1-138
EXISTING INTERCHANGE PAINT PAINT	1-139
PROPOSED JUNCTION PAINT PAINT	1-140
EXISTING JUNCTION PAINT PAINT	1-141
PROPOSED DIVERSION PAINT PAINT	1-142
EXISTING DIVERSION PAINT PAINT	1-143
PROPOSED CLOSURE PAINT PAINT	1-144
EXISTING CLOSURE PAINT PAINT	1-145
PROPOSED DETOUR PAINT PAINT	1-146
EXISTING DETOUR PAINT PAINT	1-147
PROPOSED TRAFFIC CONTROL PAINT PAINT	1-148
EXISTING TRAFFIC CONTROL PAINT PAINT	1-149
PROPOSED SIGNAL PAINT PAINT	1-150
EXISTING SIGNAL PAINT PAINT	1-151
PROPOSED STOP SIGN PAINT PAINT	1-152
EXISTING STOP SIGN PAINT PAINT	1-153
PROPOSED SPEED LIMIT SIGN PAINT PAINT	1-154
EXISTING SPEED LIMIT SIGN PAINT PAINT	1-155
PROPOSED AHEAD SIGN PAINT PAINT	1-156
EXISTING AHEAD SIGN PAINT PAINT	1-157
PROPOSED PLATE PAINT PAINT	1-158
EXISTING PLATE PAINT PAINT	1-159
PROPOSED MARKING PAINT PAINT	1-160
EXISTING MARKING PAINT PAINT	1-161
PROPOSED PAINT PAINT PAINT	1-162
EXISTING PAINT PAINT PAINT	1-163
PROPOSED CURB PAINT PAINT PAINT	1-164
EXISTING CURB PAINT PAINT PAINT	1-165
PROPOSED SIDEWALK PAINT PAINT PAINT	1-166
EXISTING SIDEWALK PAINT PAINT PAINT	1-167
PROPOSED BIKEWAY PAINT PAINT PAINT	1-168
EXISTING BIKEWAY PAINT PAINT PAINT	1-169
PROPOSED TRAIL PAINT PAINT PAINT	1-170
EXISTING TRAIL PAINT PAINT PAINT	1-171
PROPOSED WALKWAY PAINT PAINT PAINT	1-172
EXISTING WALKWAY PAINT PAINT PAINT	1-173
PROPOSED DRIVEWAY PAINT PAINT PAINT	1-174
EXISTING DRIVEWAY PAINT PAINT PAINT	1-175
PROPOSED RAMP PAINT PAINT PAINT	1-176
EXISTING RAMP PAINT PAINT PAINT	1-177
PROPOSED ON-RAMP PAINT PAINT PAINT	1-178
EXISTING ON-RAMP PAINT PAINT PAINT	1-179
PROPOSED OFF-RAMP PAINT PAINT PAINT	1-180
EXISTING OFF-RAMP PAINT PAINT PAINT	1-181
PROPOSED INTERCHANGE PAINT PAINT PAINT	1-182
EXISTING INTERCHANGE PAINT PAINT PAINT	1-183
PROPOSED JUNCTION PAINT PAINT PAINT	1-184
EXISTING JUNCTION PAINT PAINT PAINT	1-185
PROPOSED DIVERSION PAINT PAINT PAINT	1-186
EXISTING DIVERSION PAINT PAINT PAINT	1-187
PROPOSED CLOSURE PAINT PAINT PAINT	1-188
EXISTING CLOSURE PAINT PAINT PAINT	1-189
PROPOSED DETOUR PAINT PAINT PAINT	1-190
EXISTING DETOUR PAINT PAINT PAINT	1-191
PROPOSED TRAFFIC CONTROL PAINT PAINT PAINT	1-192
EXISTING TRAFFIC CONTROL PAINT PAINT PAINT	1-193
PROPOSED SIGNAL PAINT PAINT PAINT	1-194
EXISTING SIGNAL PAINT PAINT PAINT	1-195
PROPOSED STOP SIGN PAINT PAINT PAINT	1-196
EXISTING STOP SIGN PAINT PAINT PAINT	1-197
PROPOSED SPEED LIMIT SIGN PAINT PAINT PAINT	1-198
EXISTING SPEED LIMIT SIGN PAINT PAINT PAINT	1-199
PROPOSED AHEAD SIGN PAINT PAINT PAINT	1-200
EXISTING AHEAD SIGN PAINT PAINT PAINT	1-201
PROPOSED PLATE PAINT PAINT PAINT	1-202
EXISTING PLATE PAINT PAINT PAINT	1-203
PROPOSED MARKING PAINT PAINT PAINT	1-204
EXISTING MARKING PAINT PAINT PAINT	1-205
PROPOSED PAINT PAINT PAINT PAINT	1-206
EXISTING PAINT PAINT PAINT PAINT	1-207
PROPOSED CURB PAINT PAINT PAINT PAINT	1-208
EXISTING CURB PAINT PAINT PAINT PAINT	1-209
PROPOSED SIDEWALK PAINT PAINT PAINT PAINT	1-210
EXISTING SIDEWALK PAINT PAINT PAINT PAINT	1-211
PROPOSED BIKEWAY PAINT PAINT PAINT PAINT	1-212
EXISTING BIKEWAY PAINT PAINT PAINT PAINT	1-213
PROPOSED TRAIL PAINT PAINT PAINT PAINT	1-214
EXISTING TRAIL PAINT PAINT PAINT PAINT	1-215
PROPOSED WALKWAY PAINT PAINT PAINT PAINT	1-216
EXISTING WALKWAY PAINT PAINT PAINT PAINT	1-217
PROPOSED DRIVEWAY PAINT PAINT PAINT PAINT	1-218
EXISTING DRIVEWAY PAINT PAINT PAINT PAINT	1-219
PROPOSED RAMP PAINT PAINT PAINT PAINT	1-220
EXISTING RAMP PAINT PAINT PAINT PAINT	1-221
PROPOSED ON-RAMP PAINT PAINT PAINT PAINT	1-222
EXISTING ON-RAMP PAINT PAINT PAINT PAINT	1-223
PROPOSED OFF-RAMP PAINT PAINT PAINT PAINT	1-224
EXISTING OFF-RAMP PAINT PAINT PAINT PAINT	1-225
PROPOSED INTERCHANGE PAINT PAINT PAINT PAINT	1-226
EXISTING INTERCHANGE PAINT PAINT PAINT PAINT	1-227
PROPOSED JUNCTION PAINT PAINT PAINT PAINT	1-228
EXISTING JUNCTION PAINT PAINT PAINT PAINT	1-229
PROPOSED DIVERSION PAINT PAINT PAINT PAINT	1-230
EXISTING DIVERSION PAINT PAINT PAINT PAINT	1-231
PROPOSED CLOSURE PAINT PAINT PAINT PAINT	1-232
EXISTING CLOSURE PAINT PAINT PAINT PAINT	1-233
PROPOSED DETOUR PAINT PAINT PAINT PAINT	1-234
EXISTING DETOUR PAINT PAINT PAINT PAINT	1-235
PROPOSED TRAFFIC CONTROL PAINT PAINT PAINT PAINT	1-236
EXISTING TRAFFIC CONTROL PAINT PAINT PAINT PAINT	1-237
PROPOSED SIGNAL PAINT PAINT PAINT PAINT	1-238
EXISTING SIGNAL PAINT PAINT PAINT PAINT	1-239
PROPOSED STOP SIGN PAINT PAINT PAINT PAINT	1-240
EXISTING STOP SIGN PAINT PAINT PAINT PAINT	1-241
PROPOSED SPEED LIMIT SIGN PAINT PAINT PAINT PAINT	1-242
EXISTING SPEED LIMIT SIGN PAINT PAINT PAINT PAINT	1-243
PROPOSED AHEAD SIGN PAINT PAINT PAINT PAINT	1-244
EXISTING AHEAD SIGN PAINT PAINT PAINT PAINT	1-245
PROPOSED PLATE PAINT PAINT PAINT PAINT	1-246
EXISTING PLATE PAINT PAINT PAINT PAINT	1-247
PROPOSED MARKING PAINT PAINT PAINT PAINT	1-248
EXISTING MARKING PAINT PAINT PAINT PAINT	1-249
PROPOSED PAINT PAINT PAINT PAINT PAINT	1-250
EXISTING PAINT PAINT PAINT PAINT PAINT	1-251
PROPOSED CURB PAINT PAINT PAINT PAINT PAINT	1-252
EXISTING CURB PAINT PAINT PAINT PAINT PAINT	1-253
PROPOSED SIDEWALK PAINT PAINT PAINT PAINT PAINT	1-254
EXISTING SIDEWALK PAINT PAINT PAINT PAINT PAINT	1-255
PROPOSED BIKEWAY PAINT PAINT PAINT PAINT PAINT	1-256
EXISTING BIKEWAY PAINT PAINT PAINT PAINT PAINT	1-257
PROPOSED TRAIL PAINT PAINT PAINT PAINT PAINT	1-258
EXISTING TRAIL PAINT PAINT PAINT PAINT PAINT	1-259
PROPOSED WALKWAY PAINT PAINT PAINT PAINT PAINT	1-260
EXISTING WALKWAY PAINT PAINT PAINT PAINT PAINT	1-261
PROPOSED DRIVEWAY PAINT PAINT PAINT PAINT PAINT	1-262
EXISTING DRIVEWAY PAINT PAINT PAINT PAINT PAINT	1-263
PROPOSED RAMP PAINT PAINT PAINT PAINT PAINT	1-264
EXISTING RAMP PAINT PAINT PAINT PAINT PAINT	1-265
PROPOSED ON-RAMP PAINT PAINT PAINT PAINT PAINT	1-266
EXISTING ON-RAMP PAINT PAINT PAINT PAINT PAINT	1-267
PROPOSED OFF-RAMP PAINT PAINT PAINT PAINT PAINT	1-268
EXISTING OFF-RAMP PAINT PAINT PAINT PAINT PAINT	1-269
PROPOSED INTERCHANGE PAINT PAINT PAINT PAINT PAINT	1-270
EXISTING INTERCHANGE PAINT PAINT PAINT PAINT PAINT	1-271
PROPOSED JUNCTION PAINT PAINT PAINT PAINT PAINT	1-272
EXISTING JUNCTION PAINT PAINT PAINT PAINT PAINT	1-273
PROPOSED DIVERSION PAINT PAINT PAINT PAINT PAINT	1-274
EXISTING DIVERSION PAINT PAINT PAINT PAINT PAINT	1-275
PROPOSED CLOSURE PAINT PAINT PAINT PAINT PAINT	1-276
EXISTING CLOSURE PAINT PAINT PAINT PAINT PAINT	1-277
PROPOSED DETOUR PAINT PAINT PAINT PAINT PAINT	1-278
EXISTING DETOUR PAINT PAINT PAINT PAINT PAINT	1-279
PROPOSED TRAFFIC CONTROL PAINT PAINT PAINT PAINT PAINT	1-280
EXISTING TRAFFIC CONTROL PAINT PAINT PAINT PAINT PAINT	1-281
PROPOSED SIGNAL PAINT PAINT PAINT PAINT PAINT	1-282
EXISTING SIGNAL PAINT PAINT PAINT PAINT PAINT	1-283
PROPOSED STOP SIGN PAINT PAINT PAINT PAINT PAINT	1-284
EXISTING STOP SIGN PAINT PAINT PAINT PAINT PAINT	1-285
PROPOSED SPEED LIMIT SIGN PAINT PAINT PAINT PAINT PAINT	1-286
EXISTING SPEED LIMIT SIGN PAINT PAINT PAINT PAINT PAINT	1-287
PROPOSED AHEAD SIGN PAINT PAINT PAINT PAINT PAINT	1-288
EXISTING AHEAD SIGN PAINT PAINT PAINT PAINT PAINT	1-289
PROPOSED PLATE PAINT PAINT PAINT PAINT PAINT	1-290
EXISTING PLATE PAINT PAINT PAINT PAINT PAINT	1-291
PROPOSED MARKING PAINT PAINT PAINT PAINT PAINT	1-292
EXISTING MARKING PAINT PAINT PAINT PAINT PAINT	1-293
PROPOSED PAINT PAINT PAINT PAINT PAINT PAINT	1-294
EXISTING PAINT PAINT PAINT PAINT PAINT PAINT	1-295
PROPOSED CURB PAINT PAINT PAINT PAINT PAINT PAINT	1-296
EXISTING CURB PAINT PAINT PAINT PAINT PAINT PAINT	1-297
PROPOSED SIDEWALK PAINT PAINT PAINT PAINT PAINT PAINT	1-298
EXISTING SIDEWALK PAINT PAINT PAINT PAINT PAINT PAINT	1-299
PROPOSED BIKEWAY PAINT PAINT PAINT PAINT PAINT PAINT	1-300
EXISTING BIKEWAY PAINT PAINT PAINT PAINT PAINT PAINT	1-301
PROPOSED TRAIL PAINT PAINT PAINT PAINT PAINT PAINT	1-302
EXISTING TRAIL PAINT PAINT PAINT PAINT PAINT PAINT	1-303
PROPOSED WALKWAY PAINT PAINT PAINT PAINT PAINT PAINT	1-304
EXISTING WALKWAY PAINT PAINT PAINT PAINT PAINT PAINT	1-305
PROPOSED DRIVEWAY PAINT PAINT PAINT PAINT PAINT PAINT	1-306
EXISTING DRIVEWAY PAINT PAINT PAINT PAINT PAINT PAINT	1-307
PROPOSED RAMP PAINT PAINT PAINT PAINT PAINT PAINT	1-308
EXISTING RAMP PAINT PAINT PAINT PAINT PAINT PAINT	1-309
PROPOSED ON-RAMP PAINT PAINT PAINT PAINT PAINT PAINT	1-310
EXISTING ON-RAMP PAINT PAINT PAINT PAINT PAINT PAINT	1-311
PROPOSED OFF-RAMP PAINT PAINT PAINT PAINT PAINT PAINT	1-312
EXISTING OFF-RAMP PAINT PAINT PAINT PAINT PAINT PAINT	1-313
PROPOSED INTERCHANGE PAINT PAINT PAINT PAINT PAINT PAINT	1-314
EXISTING INTERCHANGE PAINT PAINT PAINT PAINT PAINT PAINT	1-315
PROPOSED JUNCTION PAINT PAINT PAINT PAINT PAINT PAINT	1-316
EXISTING JUNCTION PAINT PAINT PAINT PAINT PAINT PAINT	1-317
PROPOSED DIVERSION PAINT PAINT PAINT PAINT PAINT PAINT	1-318
EXISTING DIVERSION PAINT PAINT PAINT PAINT PAINT PAINT	1-319
PROPOSED CLOSURE PAINT PAINT PAINT PAINT PAINT PAINT	1-320
EXISTING CLOSURE PAINT PAINT PAINT PAINT PAINT PAINT	1-321
PROPOSED DETOUR PAINT PAINT PAINT PAINT PAINT PAINT	1-322
EXISTING DETOUR PAINT PAINT PAINT PAINT PAINT PAINT	1-323
PROPOSED TRAFFIC CONTROL PAINT PAINT PAINT PAINT PAINT PAINT	1-324
EXISTING TRAFFIC CONTROL PAINT PAINT PAINT PAINT PAINT PAINT	1-325
PROPOSED SIGNAL PAINT PAINT PAINT PAINT PAINT PAINT	1-326
EXISTING SIGNAL PAINT PAINT PAINT PAINT PAINT PAINT	1-327
PROPOSED STOP SIGN PAINT PAINT PAINT PAINT PAINT PAINT	1-328
EXISTING STOP SIGN PAINT PAINT PAINT PAINT PAINT PAINT	1-329
PROPOSED SPEED LIMIT SIGN PAINT PAINT PAINT PAINT PAINT PAINT	1-330
EXISTING SPEED LIMIT SIGN PAINT PAINT PAINT PAINT PAINT PAINT	1-331
PROPOSED AHEAD SIGN PAINT PAINT PAINT PAINT PAINT PAINT	1-332
EXISTING AHEAD SIGN PAINT PAINT PAINT PAINT PAINT PAINT	1-333
PROPOSED PLATE PAINT PAINT PAINT PAINT PAINT PAINT	1-334
EXISTING PLATE PAINT PAINT PAINT PAINT PAINT PAINT	1-335
PROPOSED MARKING PAINT PAINT PAINT PAINT PAINT PAINT	1-336
EXISTING MARKING PAINT PAINT PAINT PAINT PAINT PAINT	1-337
PROPOSED PAINT PAINT PAINT PAINT PAINT PAINT PAINT	1-338
EXISTING PAINT PAINT PAINT PAINT PAINT PAINT PAINT	1-339
PROPOSED CURB PAINT PAINT PAINT PAINT PAINT PAINT PAINT	1-340
EXISTING CURB PAINT PAINT PAINT PAINT PAINT PAINT PAINT	1-341
PROPOSED SIDEWALK PAINT PAINT PAINT PAINT PAINT PAINT PAINT	1-342
EXISTING SIDEWALK PAINT PAINT PAINT PAINT PAINT PAINT PAINT	1-343
PROPOSED BIKEWAY PAINT PAINT PAINT PAINT PAINT PAINT PAINT	1-344
EXISTING BIKEWAY PAINT PAINT PAINT PAINT PAINT PAINT PAINT	1-345
PROPOSED TRAIL PAINT PAINT PAINT PAINT PAINT PAINT PAINT	1-346
EXISTING TRAIL PAINT PAINT PAINT PAINT PAINT PAINT PAINT	1-347
PROPOSED WALKWAY PAINT PAINT PAINT PAINT PAINT PAINT PAINT	1-348
EXISTING WALKWAY PAINT PAINT PAINT PAINT PAINT PAINT PAINT	1-349
PROPOSED DRIVEWAY PAINT PAINT PAINT PAINT PAINT PAINT PAINT	1-350
EXISTING DRIVEWAY PAINT PAINT PAINT PAINT PAINT PAINT PAINT	1-351
PROPOSED RAMP PAINT PAINT PAINT PAINT PAINT PAINT PAINT	1-352
EXISTING RAMP PAINT PAINT PAINT PAINT PAINT PAINT PAINT	1-353
PROPOSED ON-RAMP PAINT PAINT PAINT PAINT PAINT PAINT PAINT	1-354
EXISTING ON-RAMP PAINT PAINT PAINT PAINT PAINT PAINT PAINT	1-355
PROPOSED OFF-RAMP PAINT PAINT PAINT PAINT PAINT PAINT PAINT	1-356
EXISTING OFF-RAMP PAINT PAINT PAINT PAINT PAINT PAINT PAINT	1-357
PROPOSED INTERCHANGE PAINT PAINT PAINT PAINT PAINT PAINT PAINT	1-358
EXISTING INTERCHANGE PAINT PAINT PAINT PAINT PAINT PAINT PAINT	1-359
PROPOSED JUNCTION PAINT PAINT PAINT PAINT PAINT PAINT PAINT	1-360
EXISTING JUNCTION PAINT PAINT PAINT PAINT PAINT PAINT PAINT	1-361
PROPOSED DIVERSION PAINT PAINT PAINT PAINT PAINT PAINT PAINT	1-362
EXISTING DIVERSION PAINT PAINT PAINT PAINT PAINT PAINT PAINT	1-363
PROPOSED CLOSURE PAINT PAINT PAINT PAINT PAINT PAINT PAINT	1-364
EXISTING CLOSURE PAINT PAINT PAINT PAINT PAINT PAINT PAINT	1-365
PROPOSED DETOUR PAINT PAINT PAINT PAINT PAINT PAINT PAINT	1-366
EXISTING DETOUR PAINT PAINT PAINT PAINT PAINT PAINT PAINT	1-367
PROPOSED TRAFFIC CONTROL PAINT PAINT PAINT PAINT PAINT PAINT PAINT	1-368
EXISTING TRAFFIC CONTROL PAINT PAINT PAINT PAINT PAINT PAINT PAINT	1-369
PROPOSED SIGNAL PAINT PAINT PAINT PAINT PAINT PAINT PAINT	1-370
EXISTING SIGNAL PAINT PAINT PAINT PAINT PAINT PAINT PAINT	1-371
PROPOSED STOP SIGN PAINT PAINT PAINT PAINT PAINT PAINT PAINT	1-372
EXISTING STOP SIGN PAINT PAINT PAINT PAINT PAINT PAINT PAINT	1-373
PROPOSED SPEED LIMIT SIGN PAINT PAINT PAINT PAINT PAINT PAINT PAINT	1-374
EXISTING SPEED LIMIT SIGN PAINT PAINT PAINT PAINT PAINT PAINT PAINT	1-375
PROPOSED AHEAD SIGN PAINT PAINT PAINT PAINT PAINT PAINT PAINT	1-376
EXISTING AHEAD SIGN PAINT PAINT PAINT	

FAF 128 B			
1000' CURVED ROAD			
STATION	WIDTH	LT	RT
476+00	20.00	21.7	21.7
478+00	20.00	21.7	21.7

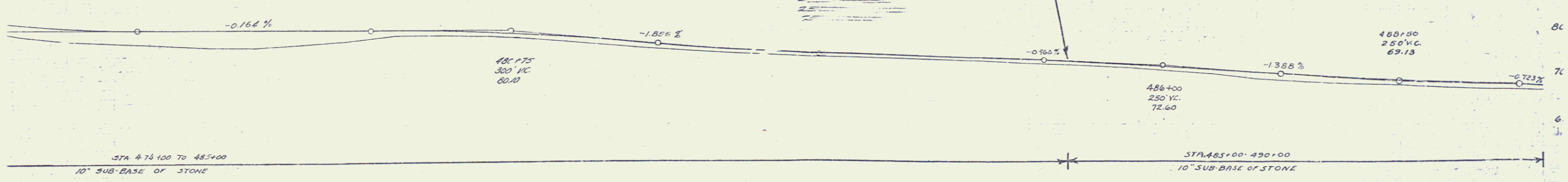
F.A.P.			
FAF 128 B 1436 G			
STATION	WIDTH	LT	RT
476+00	20.00	21.7	21.7
478+00	20.00	21.7	21.7

POOR ORIGINAL COPY



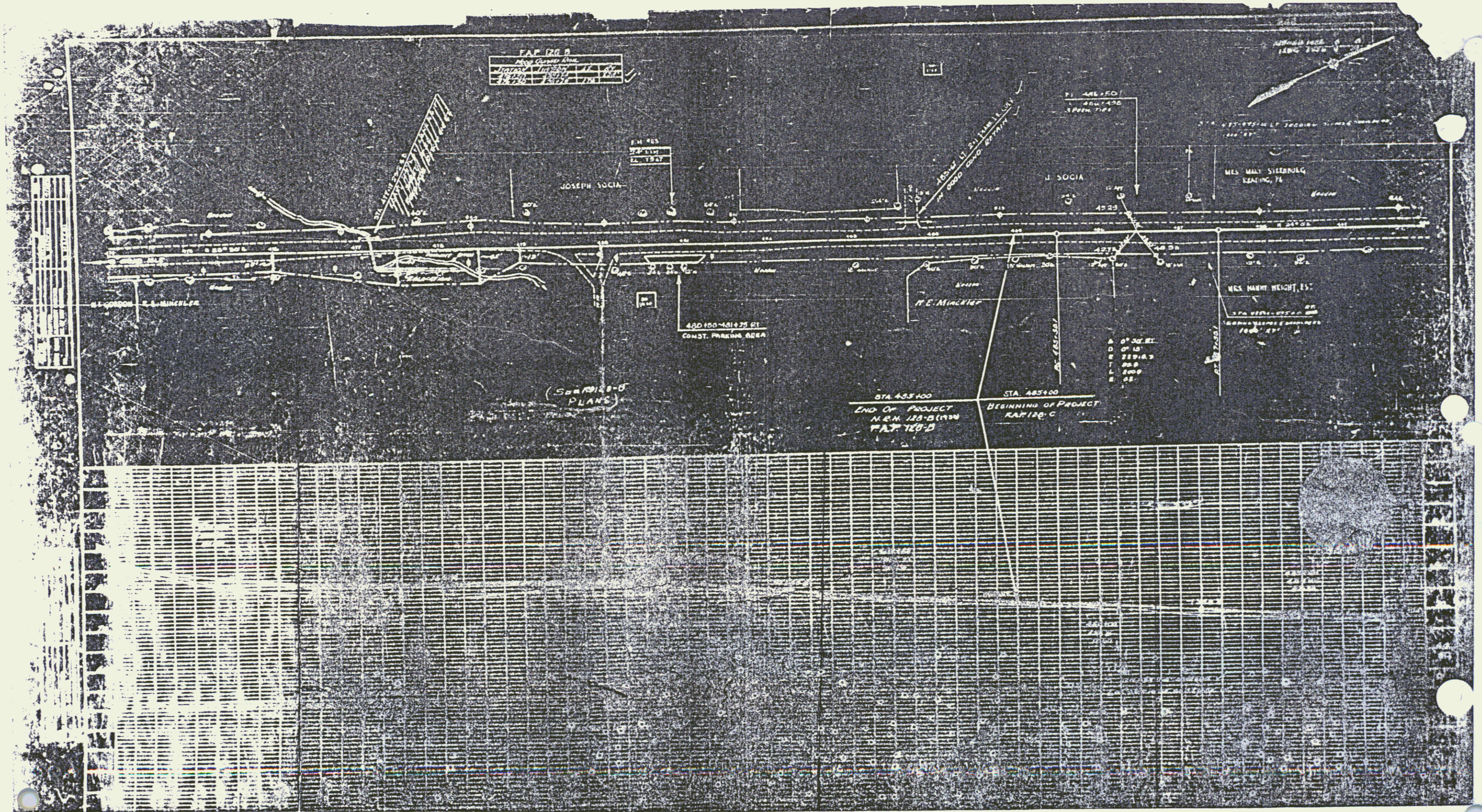
Date of Instrument	Grantor	Grantee	Recorded Grant No.	Remarks
10-16-34	RE. Munkler	Slof. W.	11 417	11-15-34

NOTE GRADE CHANGES
447+00 - 485+00 SHOULD RAISED 2 1/2" ABOVE THAT SHOWN ON THESE PLANS



STATION	ELEVATION	STATION	ELEVATION	STATION	ELEVATION
476+00	62.03	477+00	60.04	478+00	59.75
476+10	61.27	477+10	59.71	478+10	59.44
476+20	60.84	477+20	59.28	478+20	59.17
476+30	60.41	477+30	58.85	478+30	58.80
476+40	60.00	477+40	58.42	478+40	58.43
476+50	59.60	477+50	58.00	478+50	58.06
476+60	59.20	477+60	57.58	478+60	57.70
476+70	58.80	477+70	57.16	478+70	57.34
476+80	58.40	477+80	56.74	478+80	56.98
476+90	58.00	477+90	56.32	478+90	56.62
477+00	57.60	478+00	55.90	479+00	56.26
477+10	57.20	478+10	55.48	479+10	55.90
477+20	56.80	478+20	55.06	479+20	55.54
477+30	56.40	478+30	54.64	479+30	55.18
477+40	56.00	478+40	54.22	479+40	54.82
477+50	55.60	478+50	53.80	479+50	54.46
477+60	55.20	478+60	53.38	479+60	54.10
477+70	54.80	478+70	52.96	479+70	53.74
477+80	54.40	478+80	52.54	479+80	53.38
477+90	54.00	478+90	52.12	479+90	53.02
478+00	53.60	479+00	51.70	480+00	52.66
478+10	53.20	479+10	51.28	480+10	52.30
478+20	52.80	479+20	50.86	480+20	51.94
478+30	52.40	479+30	50.44	480+30	51.58
478+40	52.00	479+40	50.02	480+40	51.22
478+50	51.60	479+50	49.60	480+50	50.86
478+60	51.20	479+60	49.18	480+60	50.50
478+70	50.80	479+70	48.76	480+70	50.14
478+80	50.40	479+80	48.34	480+80	49.78
478+90	50.00	479+90	47.92	480+90	49.42
479+00	49.60	480+00	47.50	481+00	49.06
479+10	49.20	480+10	47.08	481+10	48.70
479+20	48.80	480+20	46.66	481+20	48.34
479+30	48.40	480+30	46.24	481+30	47.98
479+40	48.00	480+40	45.82	481+40	47.62
479+50	47.60	480+50	45.40	481+50	47.26
479+60	47.20	480+60	44.98	481+60	46.90
479+70	46.80	480+70	44.56	481+70	46.54
479+80	46.40	480+80	44.14	481+80	46.18
479+90	46.00	480+90	43.72	481+90	45.82
480+00	45.60	481+00	43.30	482+00	45.46
480+10	45.20	481+10	42.88	482+10	45.10
480+20	44.80	481+20	42.46	482+20	44.74
480+30	44.40	481+30	42.04	482+30	44.38
480+40	44.00	481+40	41.62	482+40	44.02
480+50	43.60	481+50	41.20	482+50	43.66
480+60	43.20	481+60	40.78	482+60	43.30
480+70	42.80	481+70	40.36	482+70	42.94
480+80	42.40	481+80	39.94	482+80	42.58
480+90	42.00	481+90	39.52	482+90	42.22
481+00	41.60	482+00	39.10	483+00	41.86
481+10	41.20	482+10	38.68	483+10	41.50
481+20	40.80	482+20	38.26	483+20	41.14
481+30	40.40	482+30	37.84	483+30	40.78
481+40	40.00	482+40	37.42	483+40	40.42
481+50	39.60	482+50	37.00	483+50	40.06
481+60	39.20	482+60	36.58	483+60	39.70
481+70	38.80	482+70	36.16	483+70	39.34
481+80	38.40	482+80	35.74	483+80	38.98
481+90	38.00	482+90	35.32	483+90	38.62
482+00	37.60	483+00	34.90	484+00	38.26
482+10	37.20	483+10	34.48	484+10	37.90
482+20	36.80	483+20	34.06	484+20	37.54
482+30	36.40	483+30	33.64	484+30	37.18
482+40	36.00	483+40	33.22	484+40	36.82
482+50	35.60	483+50	32.80	484+50	36.46
482+60	35.20	483+60	32.38	484+60	36.10
482+70	34.80	483+70	31.96	484+70	35.74
482+80	34.40	483+80	31.54	484+80	35.38
482+90	34.00	483+90	31.12	484+90	35.02
483+00	33.60	484+00	30.70	485+00	34.66
483+10	33.20	484+10	30.28	485+10	34.30
483+20	32.80	484+20	29.86	485+20	33.94
483+30	32.40	484+30	29.44	485+30	33.58
483+40	32.00	484+40	29.02	485+40	33.22
483+50	31.60	484+50	28.60	485+50	32.86
483+60	31.20	484+60	28.18	485+60	32.50
483+70	30.80	484+70	27.76	485+70	32.14
483+80	30.40	484+80	27.34	485+80	31.78
483+90	30.00	484+90	26.92	485+90	31.42
484+00	29.60	485+00	26.50	486+00	31.06
484+10	29.20	485+10	26.08	486+10	30.70
484+20	28.80	485+20	25.66	486+20	30.34
484+30	28.40	485+30	25.24	486+30	29.98
484+40	28.00	485+40	24.82	486+40	29.62
484+50	27.60	485+50	24.40	486+50	29.26
484+60	27.20	485+60	23.98	486+60	28.90
484+70	26.80	485+70	23.56	486+70	28.54
484+80	26.40	485+80	23.14	486+80	28.18
484+90	26.00	485+90	22.72	486+90	27.82
485+00	25.60	486+00	22.30	487+00	27.46
485+10	25.20	486+10	21.88	487+10	27.10
485+20	24.80	486+20	21.46	487+20	26.74
485+30	24.40	486+30	21.04	487+30	26.38
485+40	24.00	486+40	20.62	487+40	26.02
485+50	23.60	486+50	20.20	487+50	25.66
485+60	23.20	486+60	19.78	487+60	25.30
485+70	22.80	486+70	19.36	487+70	24.94
485+80	22.40	486+80	18.94	487+80	24.58
485+90	22.00	486+90	18.52	487+90	24.22
486+00	21.60	487+00	18.10	488+00	23.86
486+10	21.20	487+10	17.68	488+10	23.50
486+20	20.80	487+20	17.26	488+20	23.14
486+30	20.40	487+30	16.84	488+30	22.78
486+40	20.00	487+40	16.42	488+40	22.42
486+50	19.60	487+50	16.00	488+50	22.06
486+60	19.20	487+60	15.58	488+60	21.70
486+70	18.80	487+70	15.16	488+70	21.34
486+80	18.40	487+80	14.74	488+80	20.98
486+90	18.00	487+90	14.32	488+90	20.62
487+00	17.60	488+00	13.90	489+00	20.26
487+10	17.20	488+10	13.48	489+10	19.90
487+20	16.80	488+20	13.06	489+20	19.54
487+30	16.40	488+30	12.64	489+30	19.18
487+40	16.00	488+40	12.22	489+40	18.82
487+50	15.60	488+50	11.80	489+50	18.46
487+60	15.20	488+60	11.38	489+60	18.10
487+70	14.80	488+70	10.96	489+70	17.74
487+80	14.40	488+80	10.54	489+80	17.38
487+90	14.00	488+90	10.12	489+90	17.02
488+00	13.60	489+00	9.70	490+00	16.66
488+10	13.20	489+10	9.28		
488+20	12.80	489+20	8.86		
488+30	12.40	489+30	8.44		
488+40	12.00	489+40	8.02		
488+50	11.60	489+50	7.60		
488+60	11.20	489+60	7.18		
488+70	10.80	489+70	6.76		
488+80	10.40	489+80	6.34		
488+90	10.00	489+90	5.92		
489+00	9.60	490+00	5.50		
489+10	9.20				
489+20	8.80				
489+30	8.40				
489+40	8.00				
489+50	7.60				
489+60	7.20				
489+70	6.80				
489+80	6.40				
489+90	6.00				
490+00	5.60				

POOR ORIGINAL COPY



POOR ORIGINAL COPY

4A

3

POOR ORIGINAL COPY

128-C 1936 7 30



522+00 - 523+00 LT
PARKING AREA

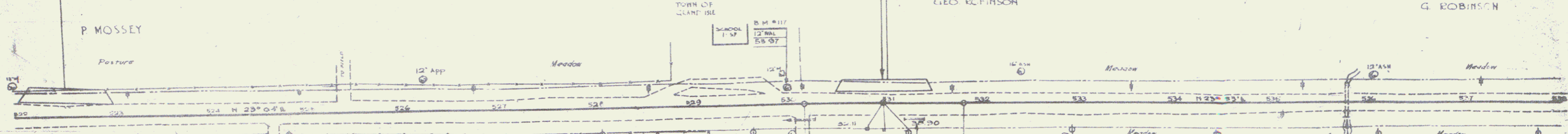
P. MOSSEY

Pasture

530+50 - 531+50 LT
PARKING AREA

GEO. ROBINSON

G. ROBINSON



Special 10% slopes
Sta 521 to Sta 523+00 RT

SEEDING SLOPES & SHOULDERS

STA. TO STA.	LT	RT	LENG	WIDTH	SO. FT.
522+00	522+00	LT	120'	6'	900'
522+00	522+00	RT	500'	9'	1800'
523+00	523+00	LT	500'	10'	2500'
523+00	523+00	RT	100'	10'	1000'
523+00	523+00	LT	200'	9'	1800'
523+00	523+00	RT	150'	9'	1350'
523+00	523+00	LT	100'	6'	600'
523+00	523+00	RT	150'	6'	900'
523+00	523+00	LT	650'	11'	7150'
523+00	523+00	RT	100'	9'	900'
531+50	531+50	RT	470'	9'	4230'

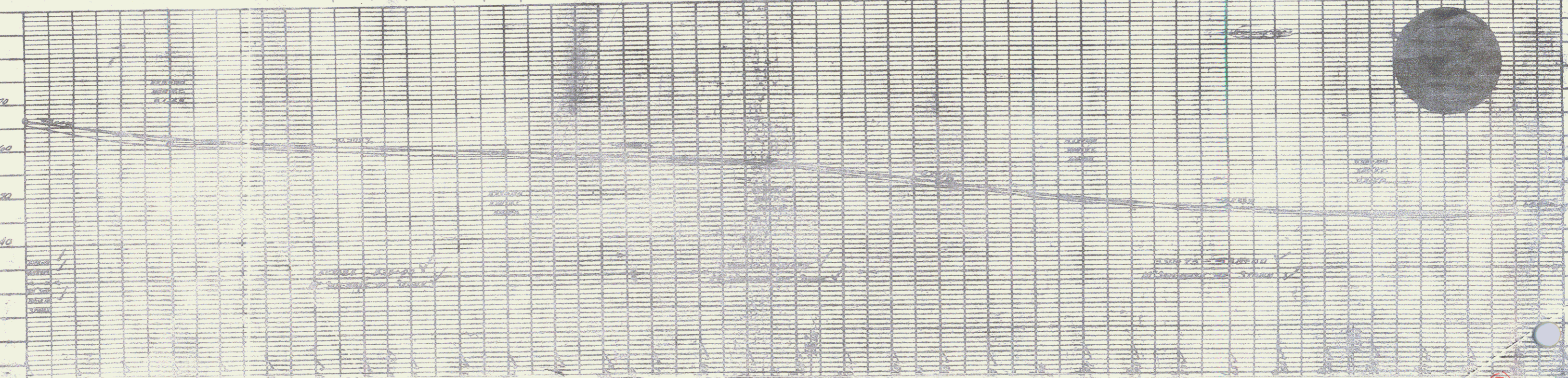
GRACE SHACKETT
B.S.D. OF 21.9 MIN. IN. IN. RT
18" R.C.P. DR. CLOS. LENGTH 20'
2 C.S. & 2 D. WELLS

CURVE
D 0'-45' RT
D 0'-30'
R 11433.2
T 81.6
L 183.3
E 0.8

ALL TO BE 30 IN. CONC. TO 10' PAINT
FROM PAVEMENT. PAVEMENT SHALL EXTEND WITH
REMOVE ALL EXISTING WIRE
REMOVE ALL OLD CURBS TO BE PAID
FOR AS SOLID ROCK EXCAVATION (FROM 10')

PLAN	DATE	BY	CHECKED
PROPOSED	7/2/36	MALCOLM	WILSON
REVISION			
APPROVED			
DESIGNED			
DRAWN			

SCALE	DATE	BY	CHECKED
1" = 40'			
REVISION			
APPROVED			
DESIGNED			
DRAWN			



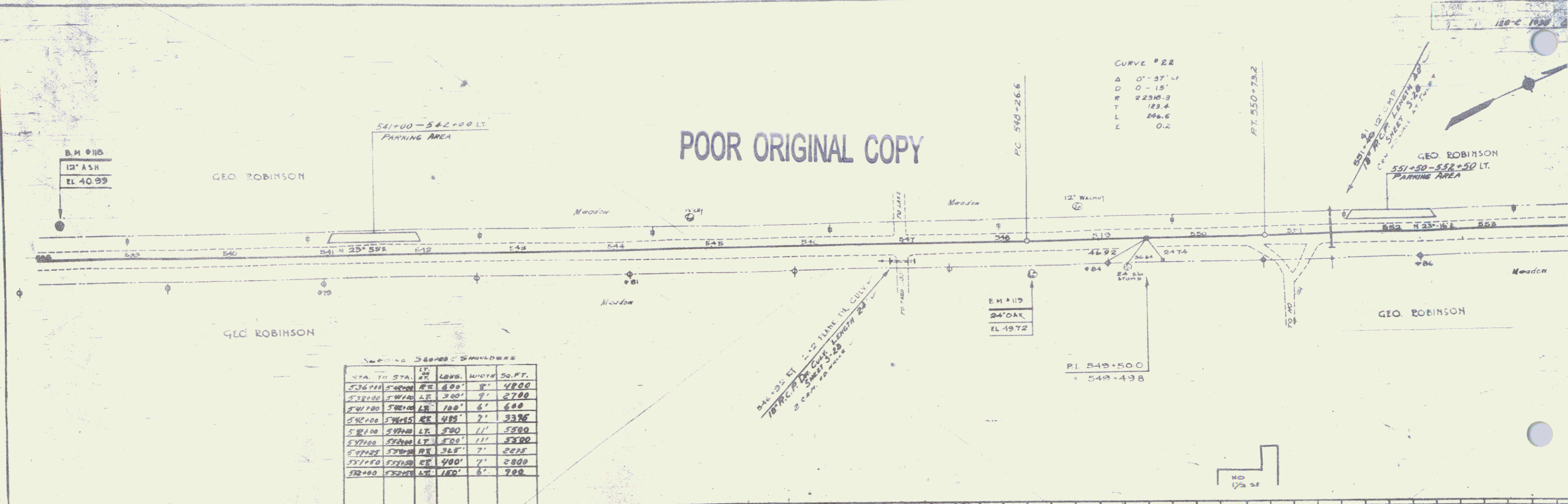
7
6

POOR ORIGINAL COPY

120-C 1930

CURVE # 22
 Δ 0°-37'-41"
 D 0'-15"
 R 2230.3
 T 123.4
 L 246.5
 E 0.2

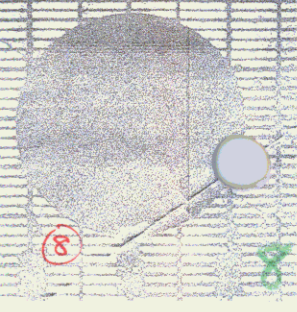
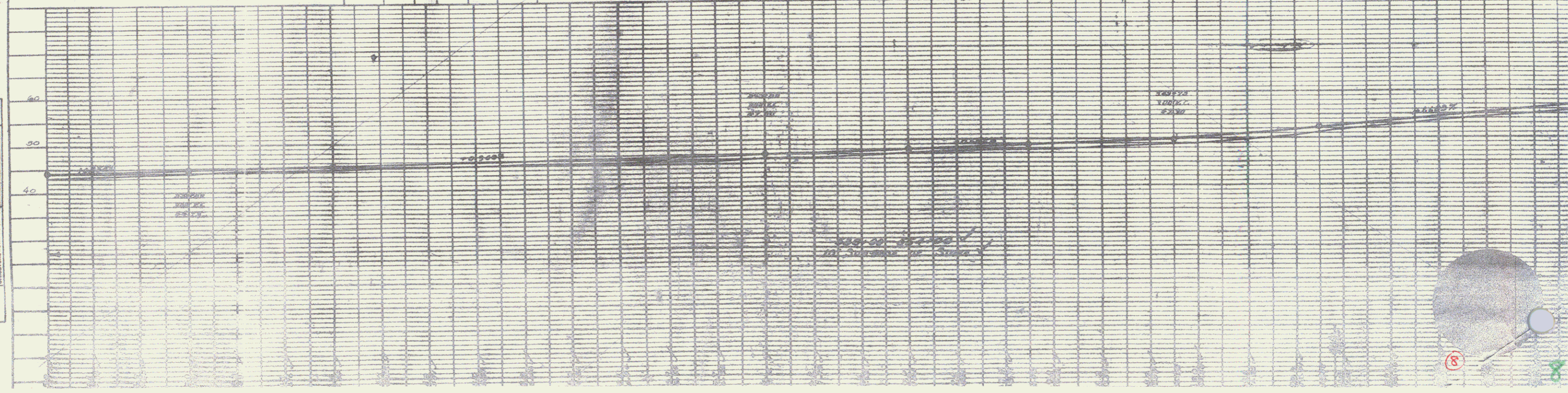
PLAN	DATE	BY
REVISION	DATE	BY
APPROVED	DATE	BY
DESIGNED	DATE	BY
CHECKED	DATE	BY
IN CHARGE	DATE	BY
PROJECT	NO.	DATE



SETTING SHOULDERS

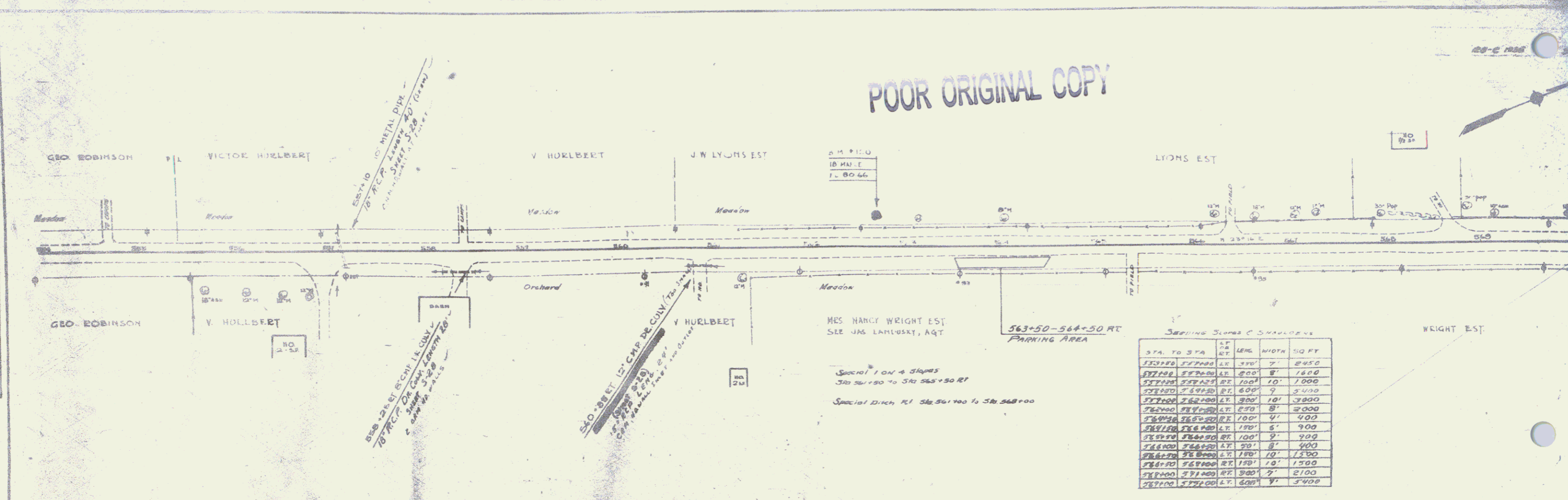
STA TO STA.	LR	LRG.	WIDTH	SQ. FT.
536+00	540+00	LR	6.00'	2400
536+00	540+00	LR	3.00'	2700
540+00	542+00	LR	7.00'	630
540+00	542+00	LR	7.00'	3325
542+00	544+00	LR	7.00'	3300
544+00	546+00	LR	7.00'	3300
546+00	548+00	LR	7.00'	2425
548+00	550+00	LR	7.00'	2400
550+00	552+00	LR	6.00'	720

PERMITS	DATE	BY
APPROVED	DATE	BY
DESIGNED	DATE	BY
CHECKED	DATE	BY
IN CHARGE	DATE	BY
PROJECT	NO.	DATE



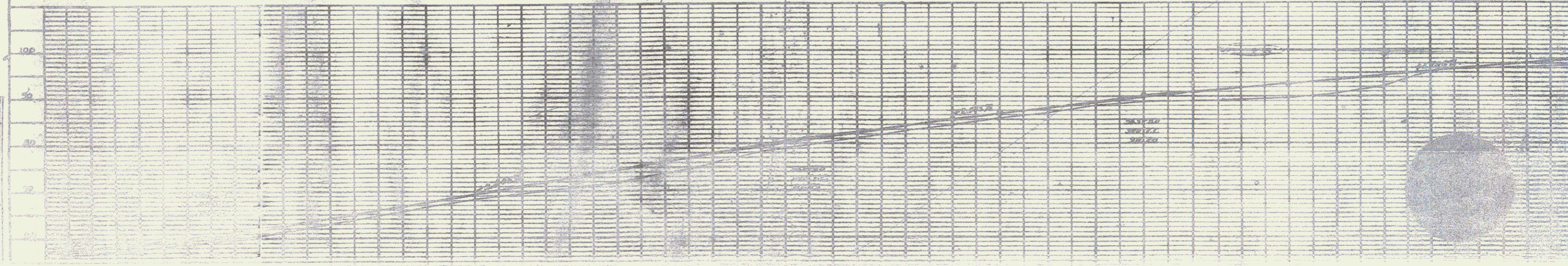
POOR ORIGINAL COPY

NO.	DATE	DESCRIPTION



Setting Slopes & Curves

STA. TO STA.	LR	LENG.	WIDTH	NO. FT.	
563+00	563+25	LR	250'	7'	2450
563+25	563+50	LR	250'	8'	1800
563+50	563+75	LR	250'	10'	1000
563+75	564+00	LR	250'	7'	3400
564+00	564+25	LR	250'	10'	3000
564+25	564+50	LR	250'	8'	3000
564+50	564+75	LR	250'	7'	400
564+75	565+00	LR	250'	6'	900
565+00	565+25	LR	250'	7'	900
565+25	565+50	LR	250'	8'	400
565+50	565+75	LR	250'	10'	1500
565+75	566+00	LR	250'	7'	2100
566+00	566+25	LR	250'	7'	3400



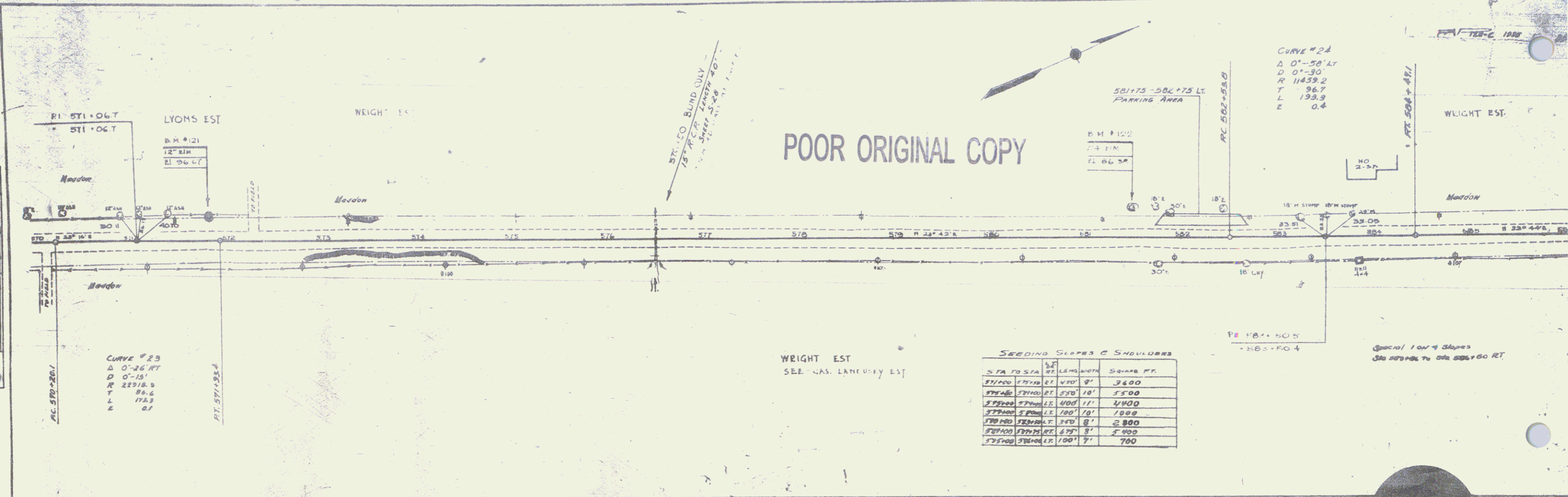
9

9

POOR ORIGINAL COPY

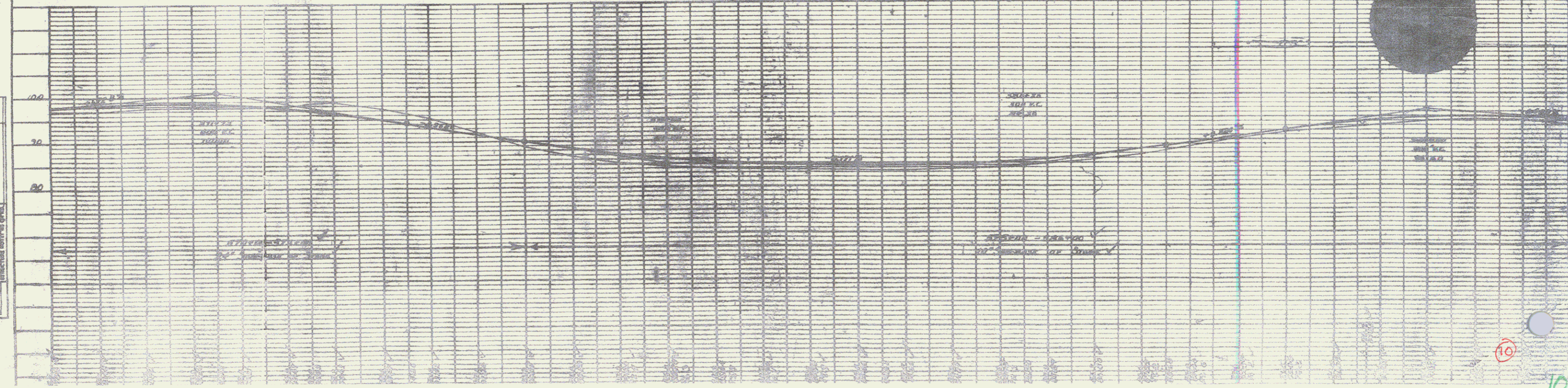
PLAN

DESIGNED BY	DATE
CHECKED BY	DATE
APPROVED BY	DATE
PROJECT NO.	
SCALE	



PROFILE

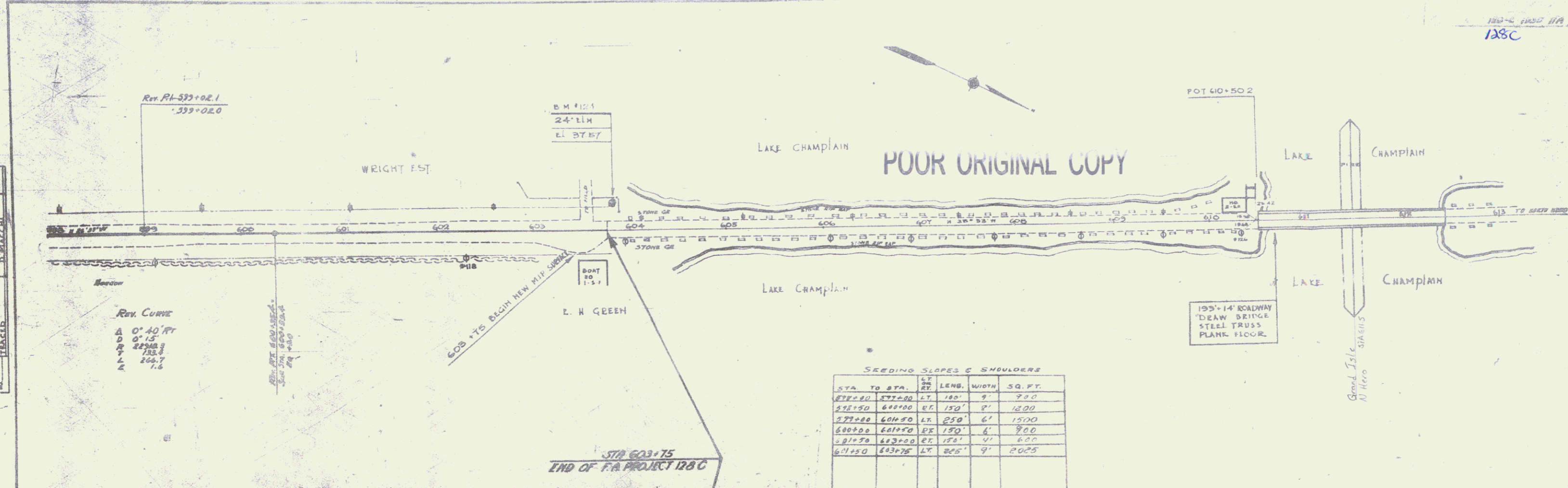
DESIGNED BY	DATE
CHECKED BY	DATE
APPROVED BY	DATE
PROJECT NO.	
SCALE	



10

10

POOR ORIGINAL COPY



REV. CURVE
 Δ 0° 40' 00"
 D 0' 15"
 R 244.3
 L 266.7
 A

SEEDING SLOPES & SHOULDER

STA. TO STA.	LT.	LEN.	WIDTH	SQ. FT.
572+50 572+00	LT.	150'	9'	700
572+50 600+00	RT.	150'	8'	1200
572+00 600+50	LT.	250'	6'	1500
600+00 601+50	RT.	150'	6'	700
601+50 603+00	RT.	150'	4'	600
601+50 603+75	LT.	225'	9'	2025

STA 603+75
 END OF P.A. PROJECT 128C

PLAN

DATE	12/17/77
BY	J. S. BROWN
CHECKED BY	J. S. BROWN
SCALE	AS SHOWN
PROJECT NO.	128C
DATE	12/17/77
BY	J. S. BROWN
CHECKED BY	J. S. BROWN
SCALE	AS SHOWN
PROJECT NO.	128C

11A

12