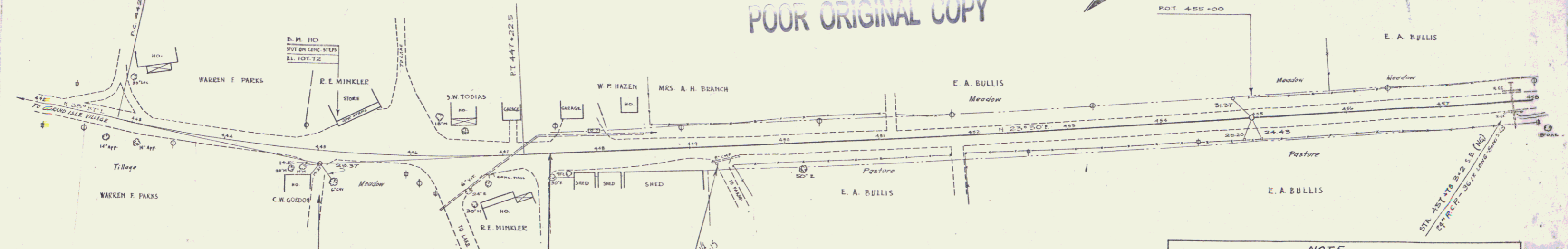


FAP 128 B		
WOOD GUIDE POSTS		
STA.	QT.	LT.
447+70	1	1

128 B 1936 4 8

POOR ORIGINAL COPY

CURVE #18
 A 15° 27' LT
 D 37' 30"
 E 1637.5
 T 222.1
 L 441.6
 E 14.9

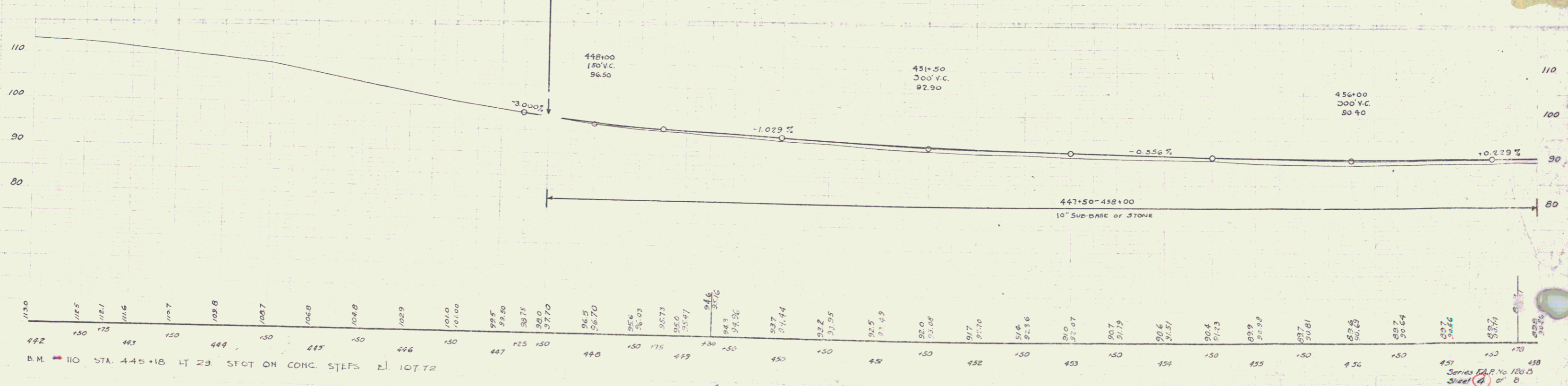


THE ATTENTION OF THE CONTRACTOR IS CALLED TO THE FACT THAT THE STATE HIGHWAY BOARD RESERVES THE RIGHT TO EXTEND THIS PROJECT AT THE SAME CONTRACT PRICES, SAID COST OF EXTENSION NOT TO EXCEED 25% OF THE AMOUNT OF CONTRACT.

STA 447+50
 END OF STATE PROJECT 128 B

STA 447+50
 BEGINNING OF PROJECT F.A.P. 128 B

NOTE: GRADE CHANGE—
 447+50 - 488+00 - RAISED 2 1/2' FROM THAT SHOWN ON THESE PLANS



B.M. 110 STA. 445+18 LT 29 SPOT ON CONC. STEPS EL. 107.72

442 115.0
 115.5
 112.1
 111.6
 110.7
 109.8
 108.7
 108.8
 104.8
 102.9
 101.0
 101.00
 99.5
 99.50
 98.75
 98.0
 97.70
 96.5
 96.70
 95.6
 95.03
 95.73
 95.0
 95.47
 94.6
 94.9
 94.56
 93.7
 93.44
 93.2
 93.95
 92.5
 91.49
 92.0
 92.68
 91.7
 91.70
 91.4
 92.36
 91.0
 92.07
 90.7
 91.19
 90.6
 91.57
 90.4
 91.43
 89.9
 90.28
 89.7
 90.81
 89.6
 90.23
 89.7
 90.64
 89.7
 90.66
 89.7
 89.72
 89.6
 89.6

442 150 443 150 444 150 445 150 446 150 447 150 448 150 449 150 450 150 451 150 452 150 453 150 454 150 455 150 456 150 457 150 458

Series F.A.P. No. 128 B
 Sheet 4 of 8

2