

Three Cable Guard Rail of Steel Posts
Item 542

US 4 113+30 - 114+48 LF (112)

Construct Drives
US 4 112+40 RT
US 4 115+19 RT
US 4 116+66 RT

U.S. 4 110+00
BEGIN PROJECT
F 020-2(13)

DAMP'G C 0+12
BEGIN PROJECT
F 120-2(12)

Special Station
118+75 R.
116+55 R.

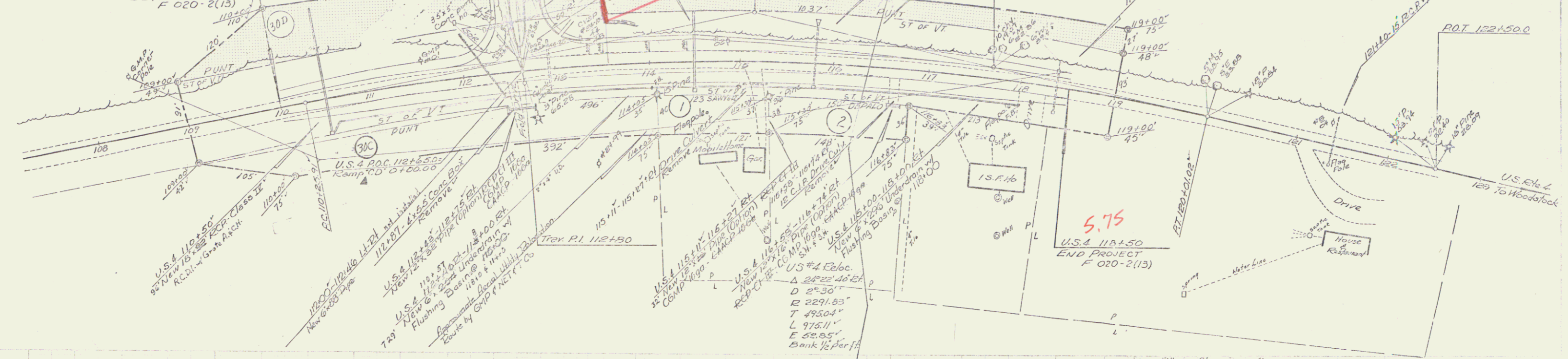
113+65

PI 115+20.95
115+05.95
-49+81± F-108C

P.O.S.T. 117+67.32

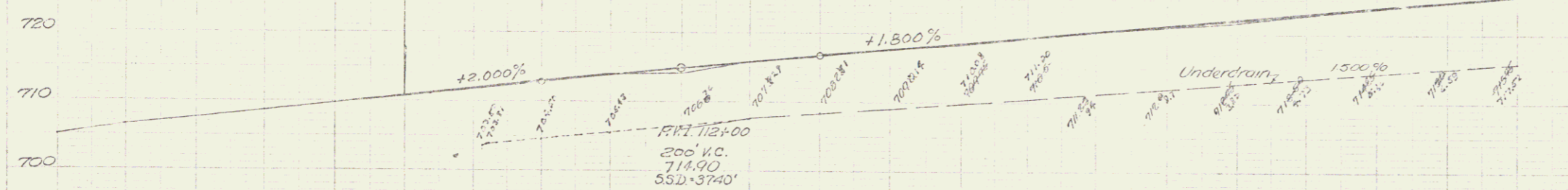
Seeding Item 611
Cover for all
Crosses Item 615
Topsoil Item 621
114+00 - 115+10 E.
115+25 - 116+00 E.
115+25 - 116 Grid

Blanchy
Sherrill



U.S. 4 110+00
BEGIN PROJECT
F 020-2(13)

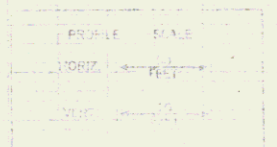
U.S. 4 118+50
END PROJECT
F 020-2(13)



Blanchy
Sherrill

PROJECT F020-2(13)
ROUTE US 4
TOWN HARTFORD
DATE 07/24/1967
PLAN 00889P

TO BE BUILT IN ITS ENTIRETY DURING
STAGE 1 CONSTRUCTION



Stage 2 Construction

HARTFORD
F020-2(13)
Sheet 11 of 40 Sheets

103 109 110 111 112 113 114 115 116 117 118 119 120 121 122 123