

INDEX OF SHEETS

SHEET NO.	TITLE PAGE
1	TITLE PAGE
2-5	TYPICAL CROSS-SECTION OF IMPROVEMENT ONE COURSE CEMENT CONCRETE PAVEMENT
4	BANKING AND WIDENING TABLES
5-15	PLAN AND PROFILE STA 935+94.7 TO 144+00
16	STANDARD STRUCTURE SHEET S-28
17	S-30
18	S-30A
19	S-33
20	SC-2-4
21	SCW-4
22	SCW-4-5
23	S-40
24	S-41
25-75	CROSS SECTIONS

STANDARD STRUCTURE SHEETS
 APPROVED BY THE CHIEF ENGINEER
 S-28 JULY 11, 1933
 S-30 AUG. 15, 1934

STATE OF VERMONT
 STATE HIGHWAY DEPARTMENT

PLAN AND PROFILE OF PROPOSED
 STATE HIGHWAY

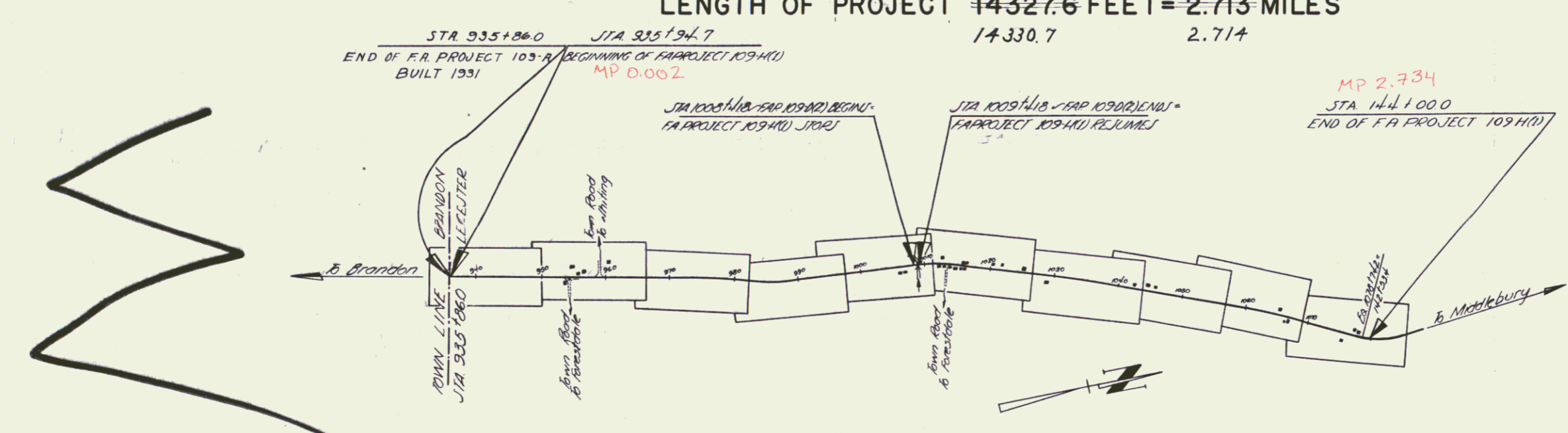
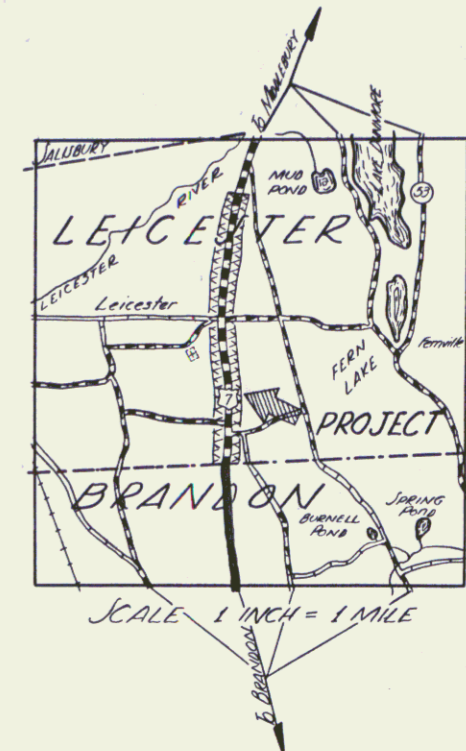
TOWN OF LEICESTER

BRANDON-MIDDLEBURY ROAD

BEGINNING AT A POINT 8.7 FEET NORTH OF
 THE BRANDON-LEICESTER TOWN LINE AND
 EXTENDING NORTHERLY 2.732 MILES ON
 ROUTE U.S. 7 INCLUDING F.A. PROJECT 109D(2)
 LENGTH OF PROJECT 14327.6 FEET = 2.713 MILES

Pin # 008857

FED. ROAD DIST. NO.	STATE	FED. AID PROJ. NO.	FISCAL YEAR	SHEET NO.	TOTAL SHEETS
9	Vt.	10910	1940	1	25



RECORD PLANS
 By: William H. Chase

APPROVED: June 13, 1940
 H. Stoughton
 COMMISSIONER OF HIGHWAYS
 SUBMITTED BY ORDER OF THE STATE HIGHWAY BOARD

COUNTY LINE	---
TOWN LINE	----
FENCE LINE
STONE WALL	-----
UNFENCED PROPERTY
GUARD RAIL
TRAVELED WAY
RAILROAD	=====
RETAINING WALL	-----
CENTER LINE	-----
SURVEY LINE	-----
CULVERT	-----
DROP INLET	-----
TROLLEY POLE	-----
POWER POLE	-----
TELEPHONE POLE	-----
TREES	-----
HEDGE	-----

GROUND ELEVATION	DATUM	LINE
GRADE ELEVATION	DATUM	LINE

CURVE DATA

DEFLECTION ANGLE	Δ
DEGREE OF CURVE	D
RADIUS OF CURVE	R
TANGENT DISTANCE	T
LENGTH OF CURVE	L
EXTERNAL DISTANCE	E
POINT OF INTERSECTION	P. I.
POINT OF CURVE	P. C.
POINT OF TANGENT	P. T.
POINT ON TANGENT	P. O. T.

SCALES

TITLE	1" = 1000 FT
TYPICAL	1" = 2 "
PLAN	1" = 50 "
PROFILE HORIZONTAL	1" = 50 "
PROFILE VERTICAL	1" = 10 "
CROSS SECTIONS	1" = 5 "

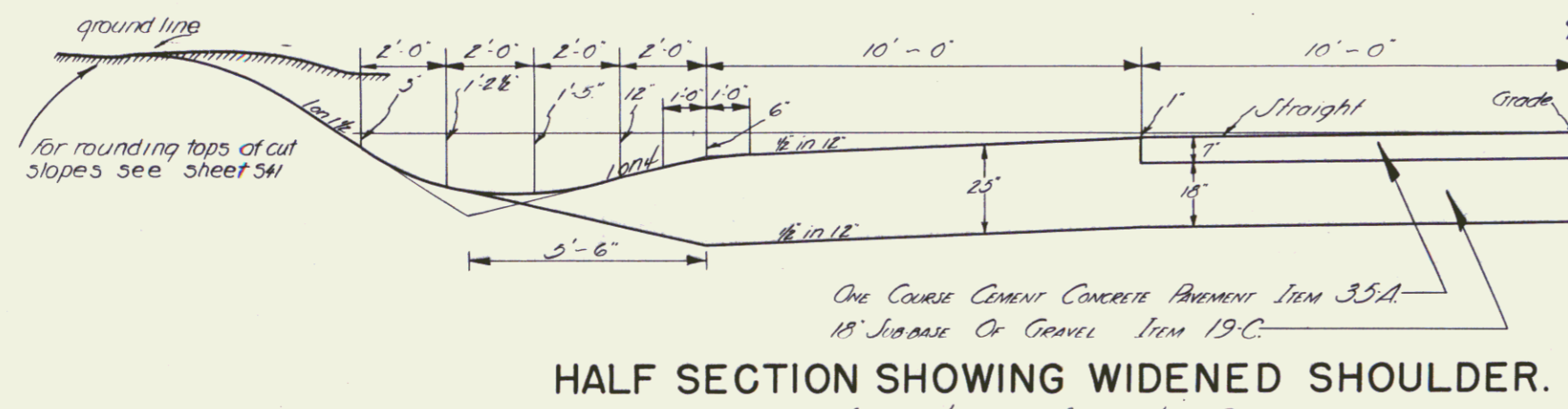
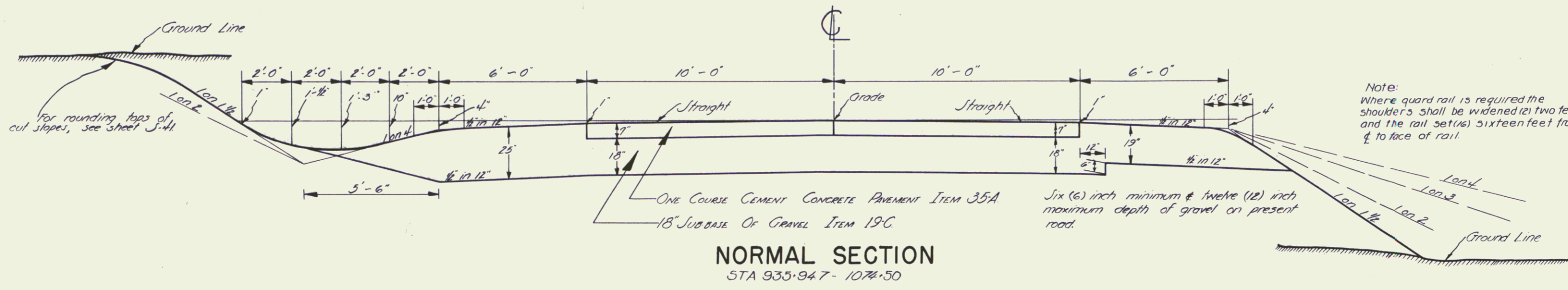
U.S. Rte #7
 RIGHT-OF-WAY DIVISION
 TOWN FILE
 PERPETUAL
 Town of LEICESTER
 (To Be Returned To R.O.W. Division)

THESE PLANS ARE SUBJECT TO SUCH REVISIONS AS MAY BE
 REQUIRED BY THE PUBLIC ROADS ADMINISTRATION OR THE COM-
 MISSIONER OF HIGHWAYS.
 CONSTRUCTION IS TO BE CARRIED ON IN ACCORDANCE WITH
 THE PLANS AND THE STANDARD ROAD AND BRIDGE SPECIFICATIONS
 OF 1936, AS APPROVED DECEMBER 29TH, 1936 BY THE PUBLIC
 ROADS ADMINISTRATION, INCLUDING ALL SUBSEQUENT APPROVED
 REVISIONS AND SUCH REVISED SPECIFICATIONS AND SPECIAL
 PROVISIONS AS ARE SUBMITTED WITH THE PLANS.

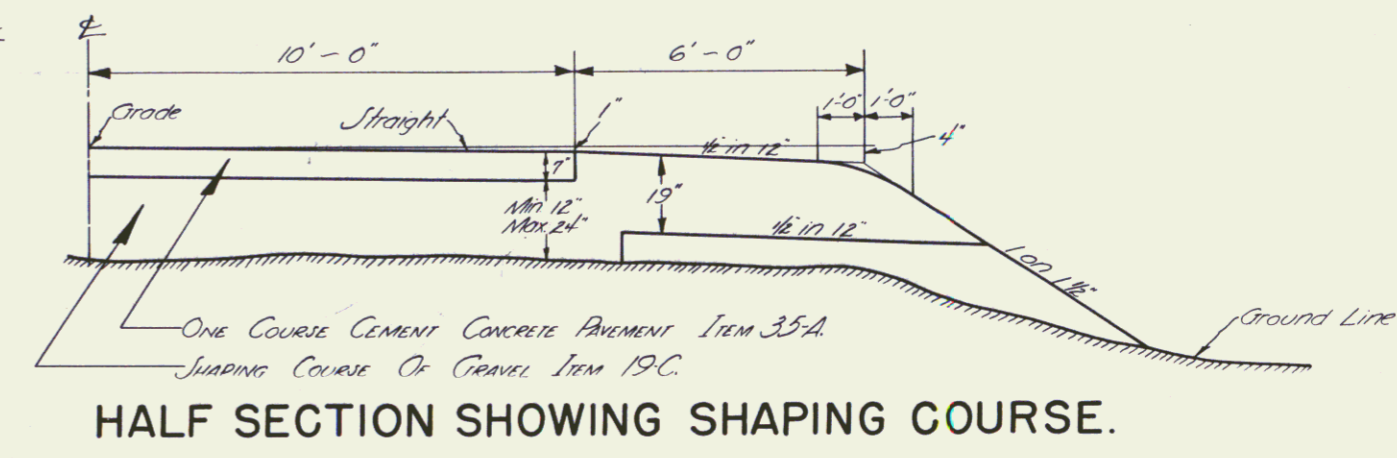
APPROVED: June 1, 1940 C. W. Wainwright ROAD ENGINEER	APPROVED: June 1, 1940 H. Stoughton DISTRICT HIGHWAY COMMISSIONER	SERIES F.A.P. NO. 109-HU/FILED SHEET (1) OF 25
---	---	---

TYPICAL SECTIONS

7" ONE COURSE CEMENT CONCRETE PAVEMENT. ITEM 35-A.



Sta 1037+00 to Sta 1039+00 R/L
Sta 1038+50 to Sta 1042+00 L/R
Sta 1054+50 to Sta 1059+00 L/R



Note: Only those trees approved by the engineer are to be cut. It is not intended that all trees coming within the flat fill slopes will be cut; only those with an excessive amount of fill around them or within a distance of approximately 18 or 20 feet from the center line.

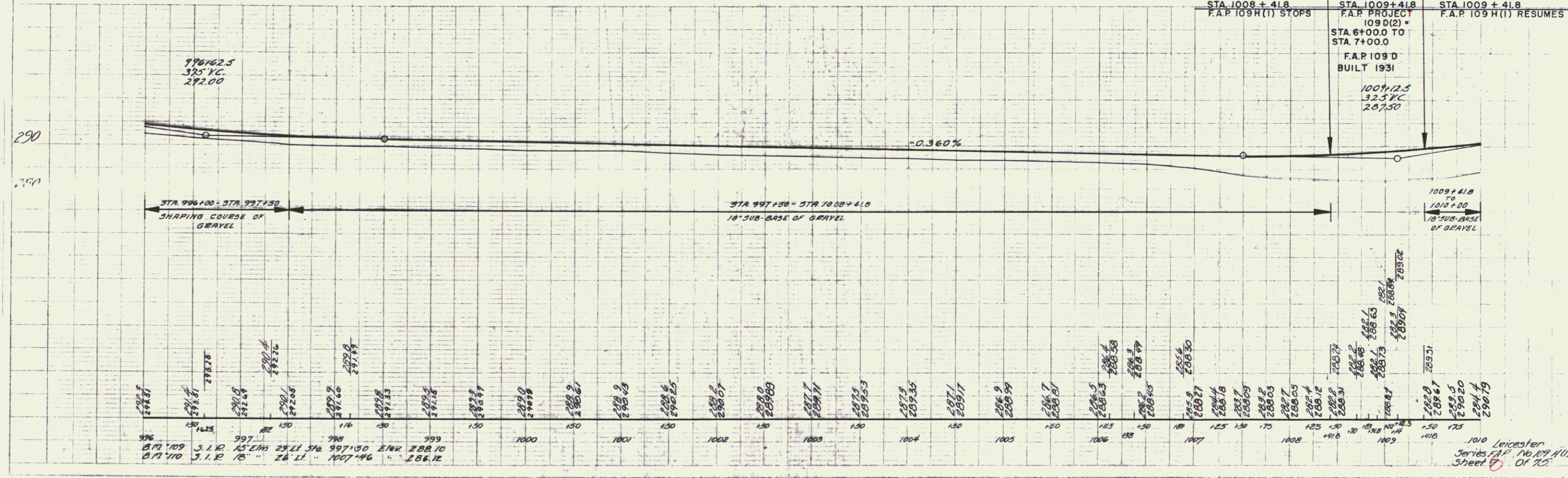
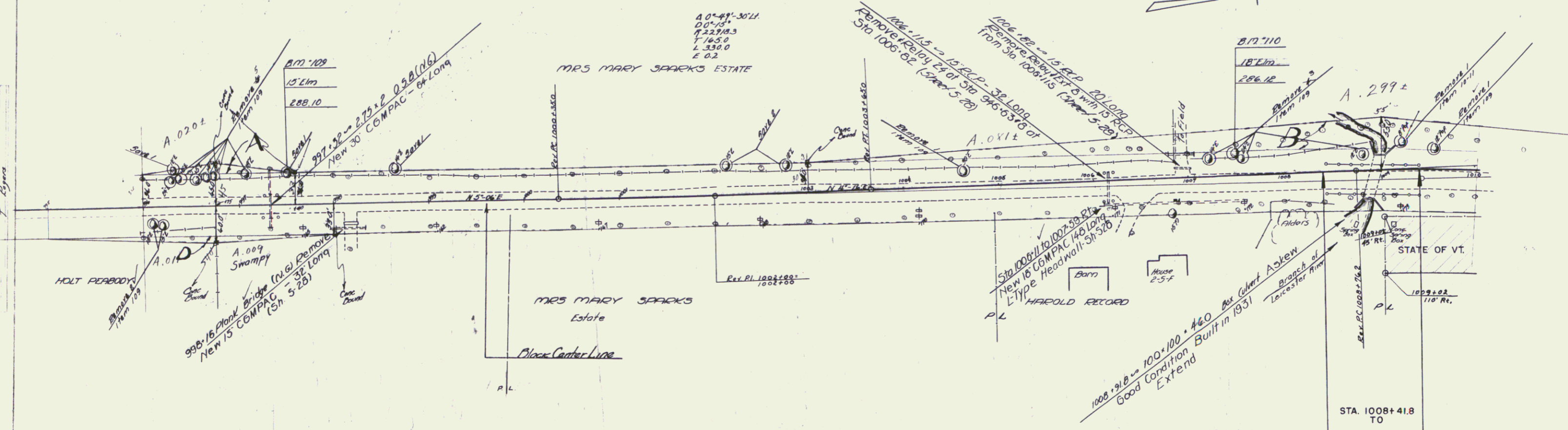
ESTIMATED QUANTITIES	

LEICESTER

Surveyed by **GL Perkins**
Designed by **AJ Runnals**
Drawn by **EJ Brunelle**
Traced by **L Lavin**
Checked by
Series **FAP No. 109410** Filed
Sheet **2** of **23** Sheets

PARCEL INSTRUMENT	DATE	GRANTOR	GRANTEE	RECORDED	REMARKS		
D	V D O E	7-23-40	HOLT & RUBY PARBODY	ST. OF VT.	26	126-29	7-30-40
A.B.	G D O E	8-23-40	Mrs. KENNETH WILLIAM (GARDEN)	ST. OF VT.	26	163-65	8-28-41

FED. ROAD DIST. NO.	STATE	FED. AID	LOCAL	SHEET	TOTAL
9	VT	109	111	9	75

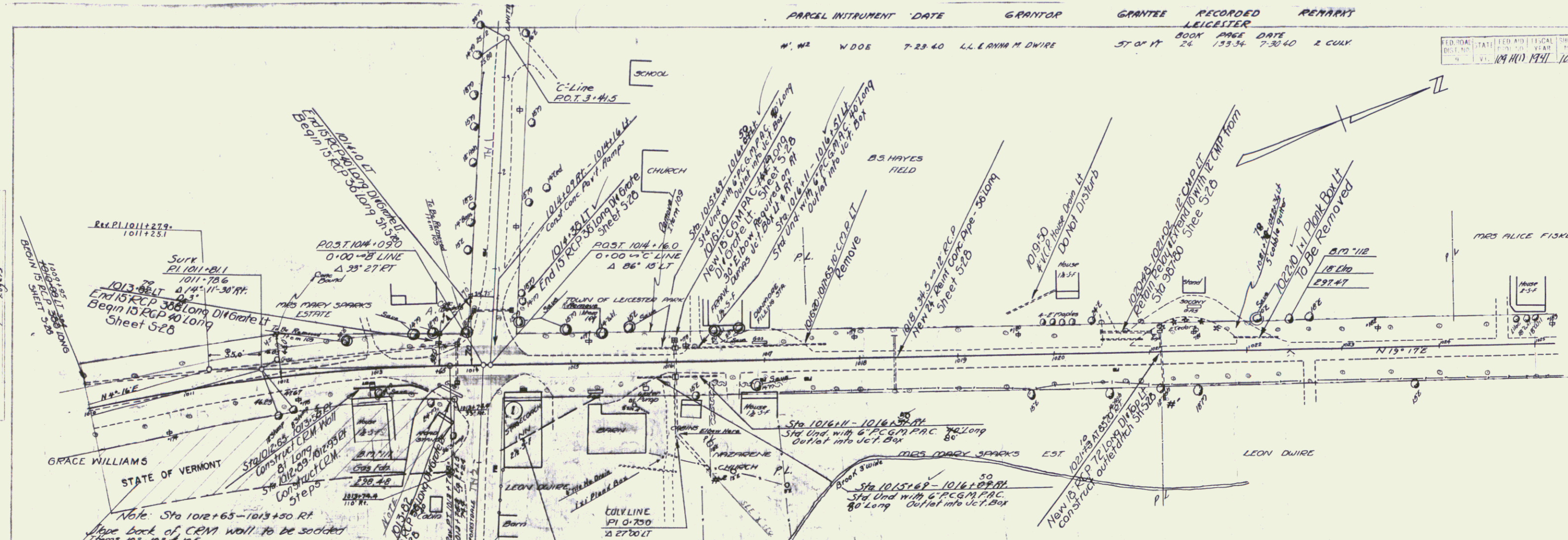


Station	Elevation	Station	Elevation	Station	Elevation
996+00	284.15	997+00	288.10	1000+00	288.10
996+10	284.15	997+10	288.10	1000+10	288.10
996+20	284.15	997+20	288.10	1000+20	288.10
996+30	284.15	997+30	288.10	1000+30	288.10
996+40	284.15	997+40	288.10	1000+40	288.10
996+50	284.15	997+50	288.10	1000+50	288.10
996+60	284.15	997+60	288.10	1000+60	288.10
996+70	284.15	997+70	288.10	1000+70	288.10
996+80	284.15	997+80	288.10	1000+80	288.10
996+90	284.15	997+90	288.10	1000+90	288.10
997+00	284.15	997+00	288.10	1000+00	288.10
997+10	284.15	997+10	288.10	1000+10	288.10
997+20	284.15	997+20	288.10	1000+20	288.10
997+30	284.15	997+30	288.10	1000+30	288.10
997+40	284.15	997+40	288.10	1000+40	288.10
997+50	284.15	997+50	288.10	1000+50	288.10
997+60	284.15	997+60	288.10	1000+60	288.10
997+70	284.15	997+70	288.10	1000+70	288.10
997+80	284.15	997+80	288.10	1000+80	288.10
997+90	284.15	997+90	288.10	1000+90	288.10
998+00	284.15	998+00	288.10	1000+00	288.10
998+10	284.15	998+10	288.10	1000+10	288.10
998+20	284.15	998+20	288.10	1000+20	288.10
998+30	284.15	998+30	288.10	1000+30	288.10
998+40	284.15	998+40	288.10	1000+40	288.10
998+50	284.15	998+50	288.10	1000+50	288.10
998+60	284.15	998+60	288.10	1000+60	288.10
998+70	284.15	998+70	288.10	1000+70	288.10
998+80	284.15	998+80	288.10	1000+80	288.10
998+90	284.15	998+90	288.10	1000+90	288.10
999+00	284.15	999+00	288.10	1000+00	288.10
999+10	284.15	999+10	288.10	1000+10	288.10
999+20	284.15	999+20	288.10	1000+20	288.10
999+30	284.15	999+30	288.10	1000+30	288.10
999+40	284.15	999+40	288.10	1000+40	288.10
999+50	284.15	999+50	288.10	1000+50	288.10
999+60	284.15	999+60	288.10	1000+60	288.10
999+70	284.15	999+70	288.10	1000+70	288.10
999+80	284.15	999+80	288.10	1000+80	288.10
999+90	284.15	999+90	288.10	1000+90	288.10
1000+00	284.15	1000+00	288.10	1000+00	288.10
1000+10	284.15	1000+10	288.10	1000+10	288.10
1000+20	284.15	1000+20	288.10	1000+20	288.10
1000+30	284.15	1000+30	288.10	1000+30	288.10
1000+40	284.15	1000+40	288.10	1000+40	288.10
1000+50	284.15	1000+50	288.10	1000+50	288.10
1000+60	284.15	1000+60	288.10	1000+60	288.10
1000+70	284.15	1000+70	288.10	1000+70	288.10
1000+80	284.15	1000+80	288.10	1000+80	288.10
1000+90	284.15	1000+90	288.10	1000+90	288.10
1001+00	284.15	1001+00	288.10	1001+00	288.10
1001+10	284.15	1001+10	288.10	1001+10	288.10
1001+20	284.15	1001+20	288.10	1001+20	288.10
1001+30	284.15	1001+30	288.10	1001+30	288.10
1001+40	284.15	1001+40	288.10	1001+40	288.10
1001+50	284.15	1001+50	288.10	1001+50	288.10
1001+60	284.15	1001+60	288.10	1001+60	288.10
1001+70	284.15	1001+70	288.10	1001+70	288.10
1001+80	284.15	1001+80	288.10	1001+80	288.10
1001+90	284.15	1001+90	288.10	1001+90	288.10
1002+00	284.15	1002+00	288.10	1002+00	288.10
1002+10	284.15	1002+10	288.10	1002+10	288.10
1002+20	284.15	1002+20	288.10	1002+20	288.10
1002+30	284.15	1002+30	288.10	1002+30	288.10
1002+40	284.15	1002+40	288.10	1002+40	288.10
1002+50	284.15	1002+50	288.10	1002+50	288.10
1002+60	284.15	1002+60	288.10	1002+60	288.10
1002+70	284.15	1002+70	288.10	1002+70	288.10
1002+80	284.15	1002+80	288.10	1002+80	288.10
1002+90	284.15	1002+90	288.10	1002+90	288.10
1003+00	284.15	1003+00	288.10	1003+00	288.10
1003+10	284.15	1003+10	288.10	1003+10	288.10
1003+20	284.15	1003+20	288.10	1003+20	288.10
1003+30	284.15	1003+30	288.10	1003+30	288.10
1003+40	284.15	1003+40	288.10	1003+40	288.10
1003+50	284.15	1003+50	288.10	1003+50	288.10
1003+60	284.15	1003+60	288.10	1003+60	288.10
1003+70	284.15	1003+70	288.10	1003+70	288.10
1003+80	284.15	1003+80	288.10	1003+80	288.10
1003+90	284.15	1003+90	288.10	1003+90	288.10
1004+00	284.15	1004+00	288.10	1004+00	288.10
1004+10	284.15	1004+10	288.10	1004+10	288.10
1004+20	284.15	1004+20	288.10	1004+20	288.10
1004+30	284.15	1004+30	288.10	1004+30	288.10
1004+40	284.15	1004+40	288.10	1004+40	288.10
1004+50	284.15	1004+50	288.10	1004+50	288.10
1004+60	284.15	1004+60	288.10	1004+60	288.10
1004+70	284.15	1004+70	288.10	1004+70	288.10
1004+80	284.15	1004+80	288.10	1004+80	288.10
1004+90	284.15	1004+90	288.10	1004+90	288.10
1005+00	284.15	1005+00	288.10	1005+00	288.10
1005+10	284.15	1005+10	288.10	1005+10	288.10
1005+20	284.15	1005+20	288.10	1005+20	288.10
1005+30	284.15	1005+30	288.10	1005+30	288.10
1005+40	284.15	1005+40	288.10	1005+40	288.10
1005+50	284.15	1005+50	288.10	1005+50	288.10
1005+60	284.15	1005+60	288.10	1005+60	288.10
1005+70	284.15	1005+70	288.10	1005+70	288.10
1005+80	284.15	1005+80	288.10	1005+80	288.10
1005+90	284.15	1005+90	288.10	1005+90	288.10
1006+00	284.15	1006+00	288.10	1006+00	288.10
1006+10	284.15	1006+10	288.10	1006+10	288.10
1006+20	284.15	1006+20	288.10	1006+20	288.10
1006+30	284.15	1006+30	288.10	1006+30	288.10
1006+40	284.15	1006+40	288.10	1006+40	288.10
1006+50	284.15	1006+50	288.10	1006+50	288.10
1006+60	284.15	1006+60	288.10	1006+60	288.10
1006+70	284.15	1006+70	288.10	1006+70	288.10
1006+80	284.15	1006+80	288.10	1006+80	288.10
1006+90	284.15	1006+90	288.10	1006+90	288.10
1007+00	284.15	1007+00	288.10	1007+00	288.10
1007+10	284.15	1007+10	288.10	1007+10	288.10
1007+20	284.15	1007+20	288.10	1007+20	288.10
1007+30	284.15	1007+30	288.10	1007+30	288.10
1007+40	284.15	1007+40	288.10	1007+40	288.10
1007+50	284.15	1007+50	288.10	1007+50	288.10
1007+60	284.15	1007+60	288.10	1007+60	288.10
1007+70	284.15	1007+70	288.10	1007+70	288.10
1007+80	284.15	1007+80	288.10	1007+80	288.10
1007+90	284.15	1007+90	288.10	1007+90	288.10
1008+00	284.15	1008+00	288.10	1008+00	288.10
1008+10	284.15	1008+10	288.10	1008+10	288.10
1008+20	284.15	1008+20	288.10	1008+20	288.10
1008+30	284.15	1008+30	288.10	1008+30	288.10
1008+40	284.15	1008+40	288.10	1008+40	288.10
1008+50	284.15	1008+50	288.10	1008+50	288.10
1008+60	284.15	1008+60	288.10	1008+60	288.10
1008+70	284.15	1008+70	288.10	1008+70	288.10
1008+80	284.15	1008+80	288.10	1008+80	288.10
1008+90	284.15	1008+90	288.10	1008+90	288.10
1009+00	284.15	1009+00	288.10	1009+00	288.10
1009+10	284.15	1009+10	288.10	1009+10	288.10
1009+20	284.15	1009+20	288.10	1009+20	288.10
1009+30	284.15	1009+30	288.10	1009+30	288.10
1009+40	284.15	1009+40	288.10	1009+40	288.10
1009+50	284.15	1009+50	288.10	1009+50	288.10
1009+60	284.15	1009+60	288.10	1009+60	288.10
1009+70	284.15	1009+70	288.10	1009+70	288.10
1009+80	284.15	1009+80	288.10	1009+80	288.10
1009+90	284.15	1009+90	288.10	1009+90	288.10
1010+00	284.15	1010+00	288.10	1010+00	288.10

1010 Leicester Series (A.P. No. 109 H(1)) Sheet 9 of 75

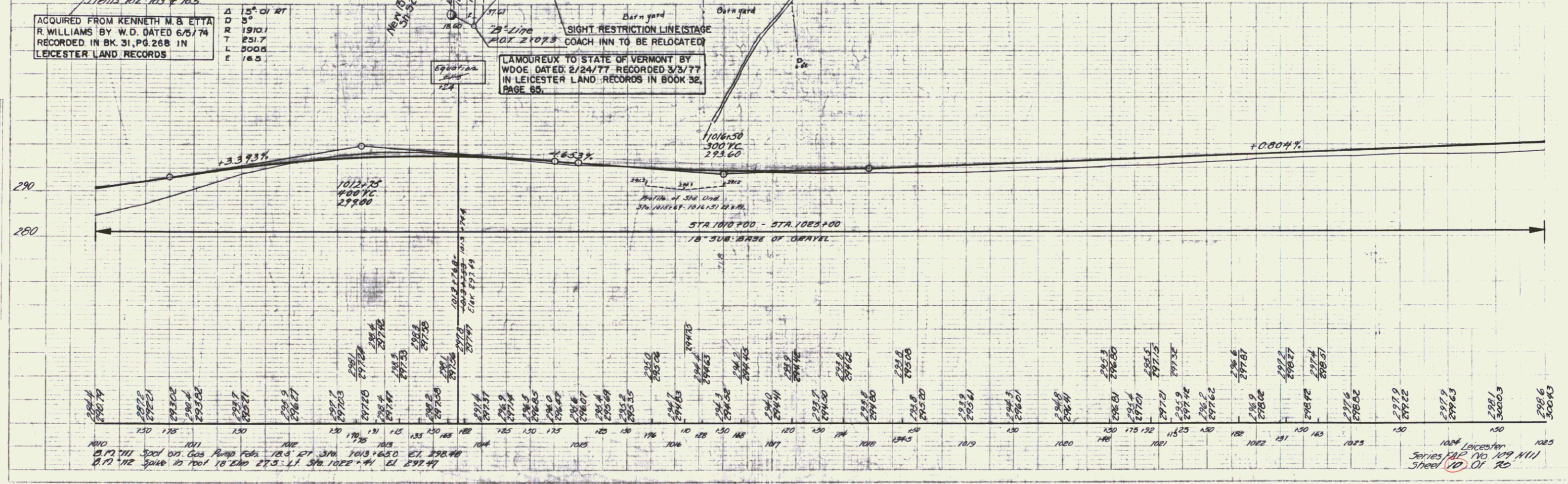
PARCEL INSTRUMENT DATE GRANTOR GRANTEE RECORDED
 LEICESTER
 BOOK PAGE DATE
 24 13334 7-30-60 2 JULY

FED. ROAD DIST. NO.	STATE	FISCAL YEAR	SHEET NO.	TOTAL SHEETS
104	VT.	1941	10	25



ACQUIRED FROM KENNETH M. & ETTA R. WILLIAMS BY W.D. DATED 6/5/74 RECORDED IN BK. 31, PG. 268 IN LEICESTER LAND RECORDS

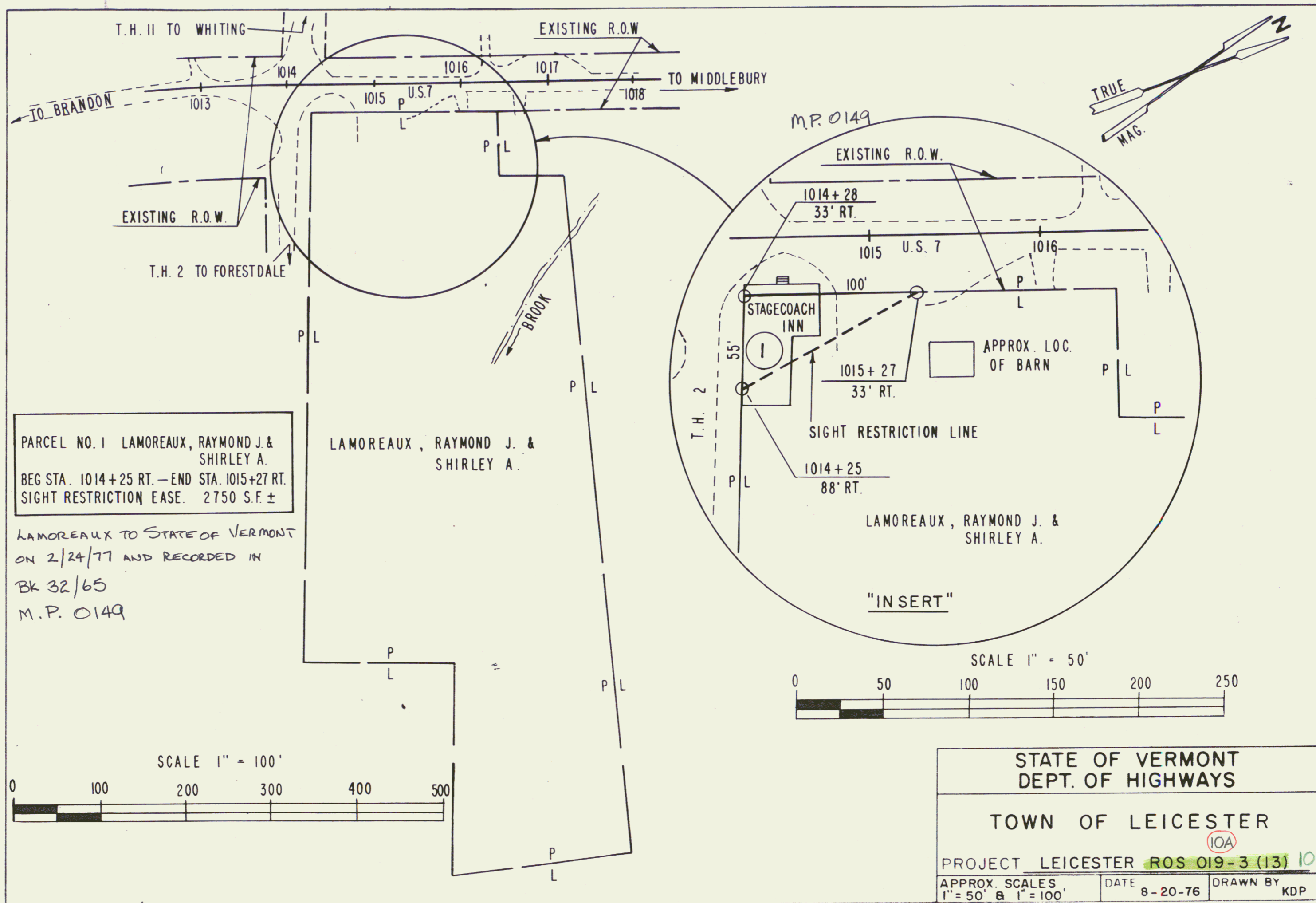
LAMOUREUX TO STATE OF VERMONT BY WOOD, DATED 2/24/77 RECORDED 3/3/77 IN LEICESTER LAND RECORDS IN BOOK 32, PAGE 85.



PLAN
 1/4" = 100'
 1/8" = 50'

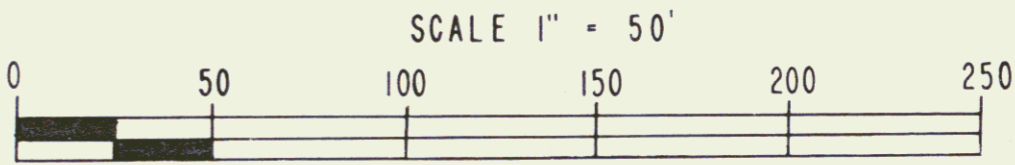
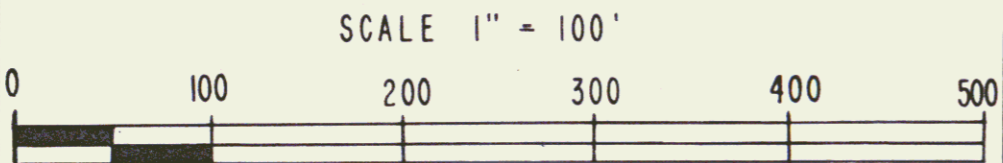
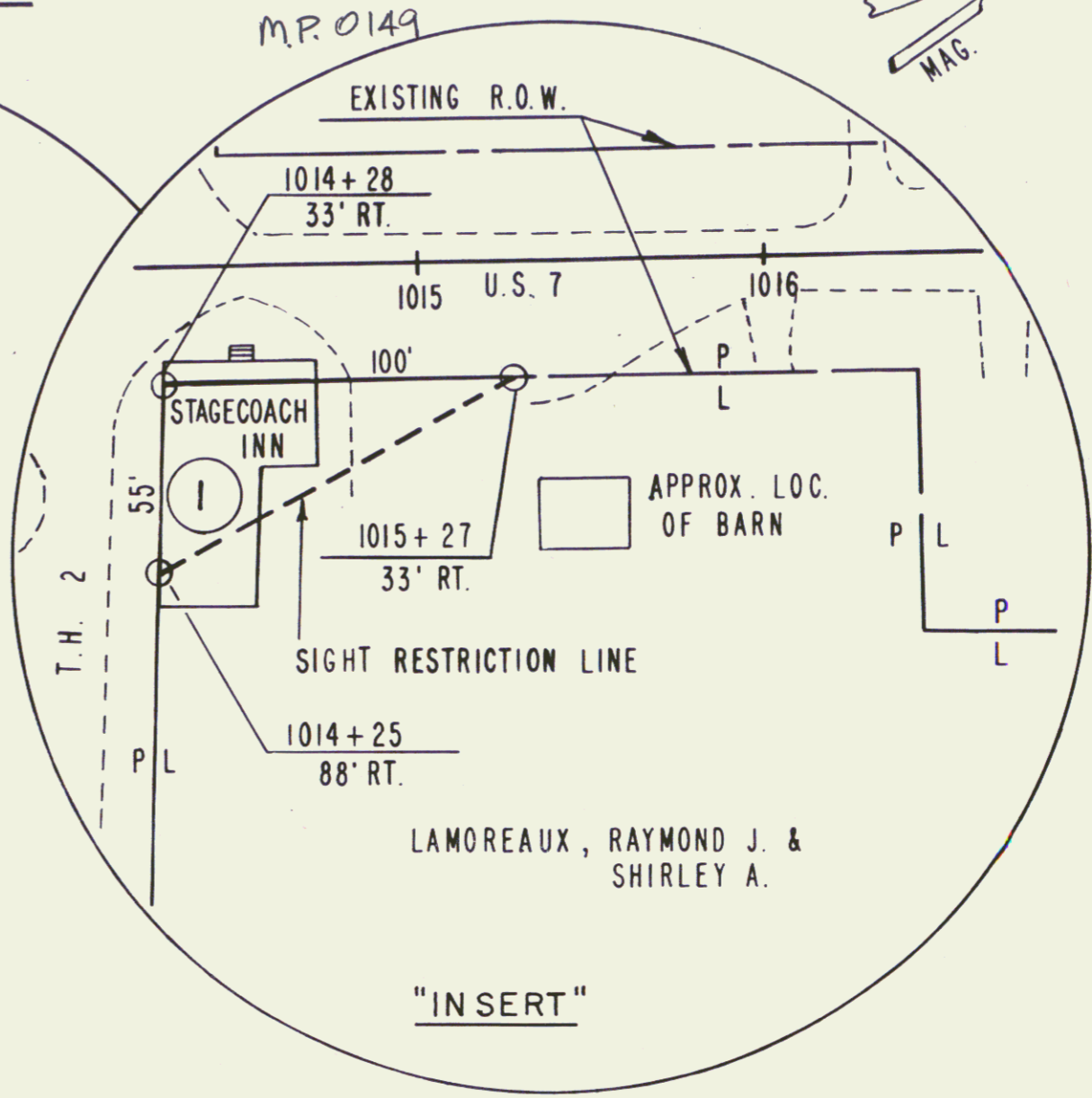
PROFILE
 1" = 10'

1024 Leicester Series 101 No. 109 N111 Sheet 10 of 20



PARCEL NO. 1 LAMOREAUX, RAYMOND J. & SHIRLEY A.
 BEG STA. 1014+25 RT. — END STA. 1015+27 RT.
 SIGHT RESTRICTION EASE. 2750 S.F. ±

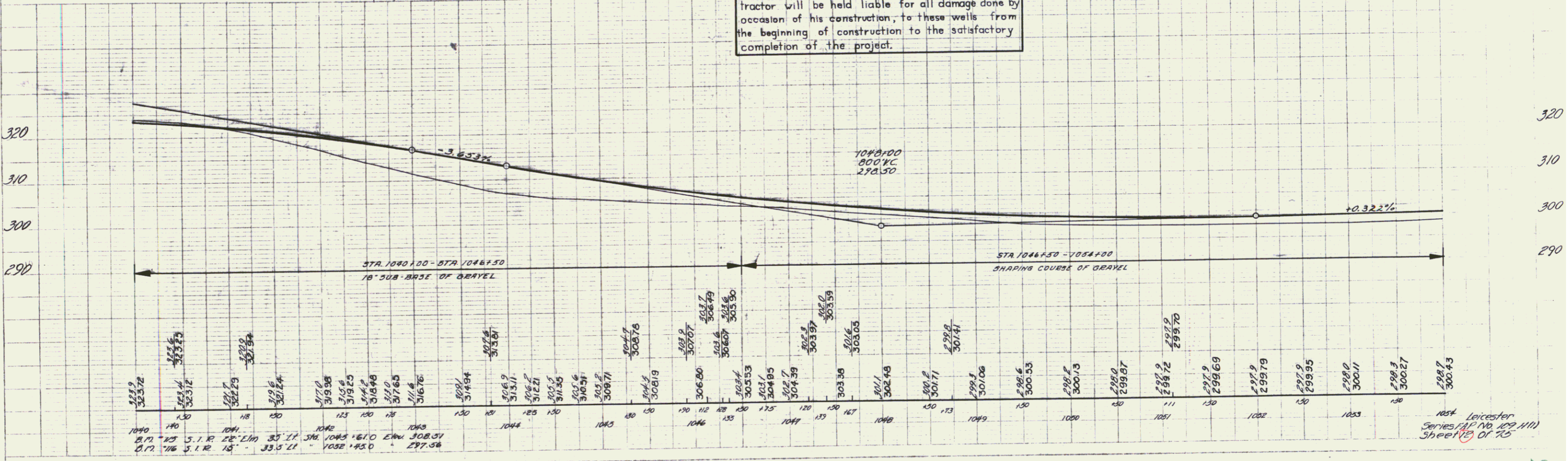
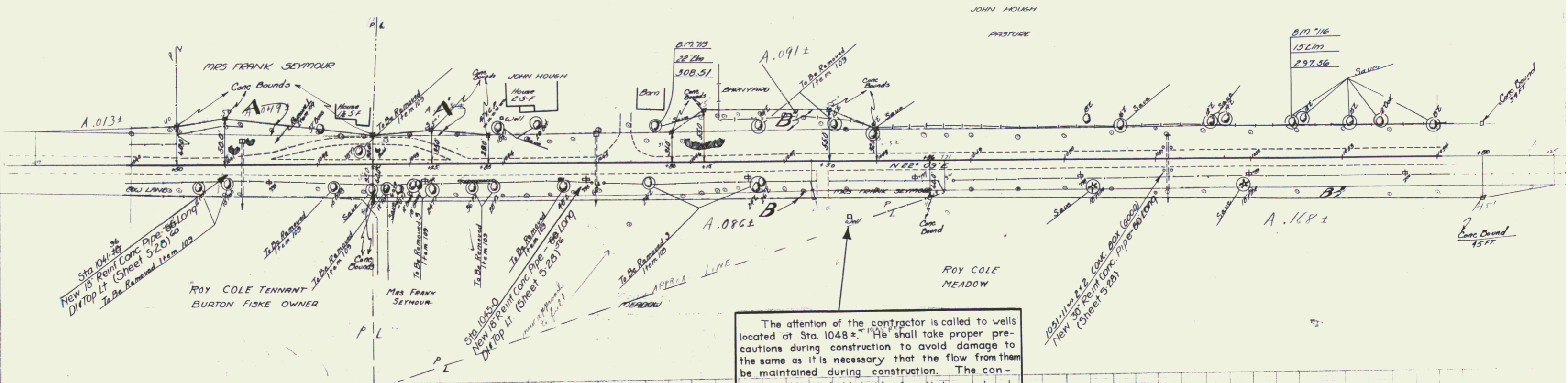
LAMOREAUX TO STATE OF VERMONT
 ON 2/24/77 AND RECORDED IN
 BK 32/65
 M.P. 0149



STATE OF VERMONT DEPT. OF HIGHWAYS		
TOWN OF LEICESTER		
PROJECT LEICESTER ROS 019-3 (13) 10		
APPROX. SCALES 1" = 50' & 1" = 100'	DATE 8-20-76	DRAWN BY KDP

PARCEL	INSTRUMENT	DATE	GRANTOR	GRANTEE	RECORDED LEICESTER	REMARKS
A, B	WDOE	7-23-40	EVA SEYMOUR	ST OF 1 st	24 135-37	7-30-40 1 COLY
B'	WDOE	8-5-40	BURTON FISKE	ST OF 1 st	24 135-37	8-22-40 1 COLY
A' B'	WDOE	7-23-40	JOHN & ELSIE HOUGH	ST OF 1 st	24 137-40	7-30-40 1 COLY

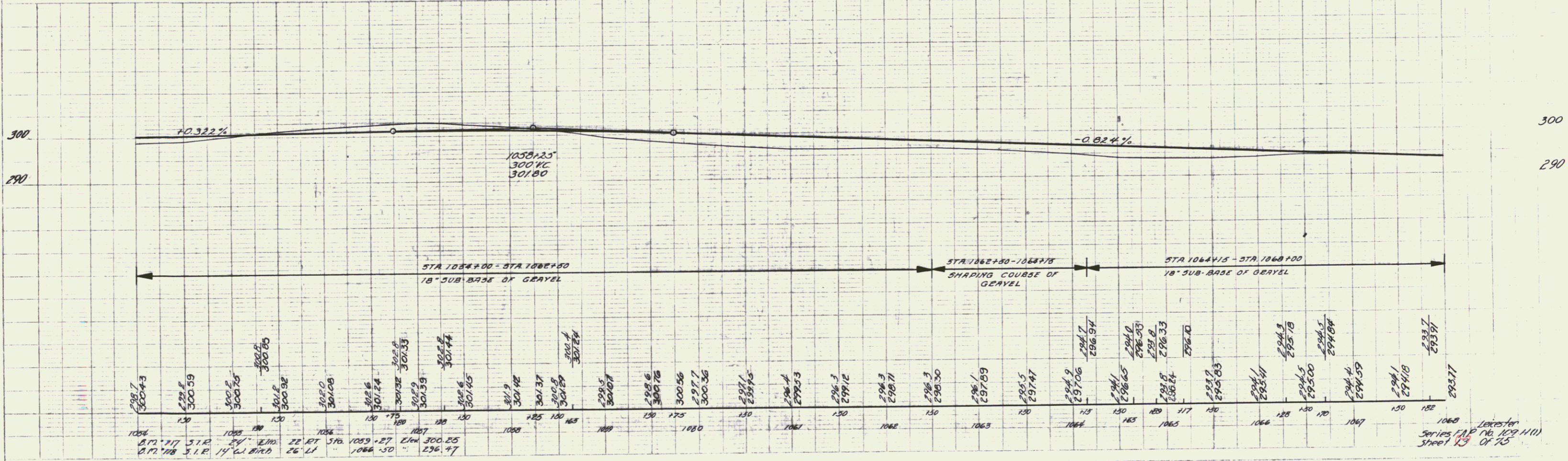
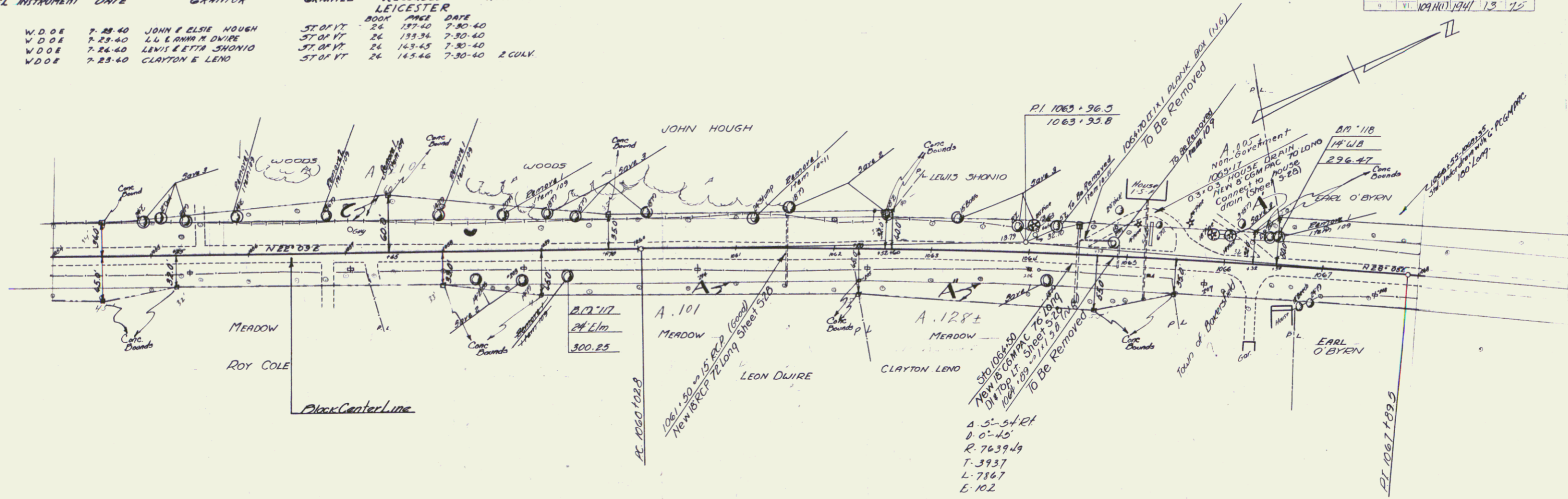
ED. ROAD	STATE	ED. AID	TOTAL SHEET	TOTAL SHEETS
9	VI.	129 RD. 1941	12	12



1054 Leicester Series (P.P. No. 109, 111) Sheet 12 of 15

PARCEL	INSTRUMENT	DATE	GRANTOR	GRANTEE	RECORDED	REMARKS
C	W.D.O.E.	7-23-40	JOHN & ELSIE HOUGH	ST. OF VT.	24	137-40 7-30-40
A	W.D.O.E.	7-23-40	L.L. & ANNA M. DWIRE	ST. OF VT.	24	139-34 7-30-40
A	W.D.O.E.	7-24-40	LEWIS & LETIA SHONIO	ST. OF VT.	24	143-45 7-30-40
A	W.D.O.E.	7-23-40	CLAYTON & LENO	ST. OF VT.	24	143-46 7-30-40 2 CULV.

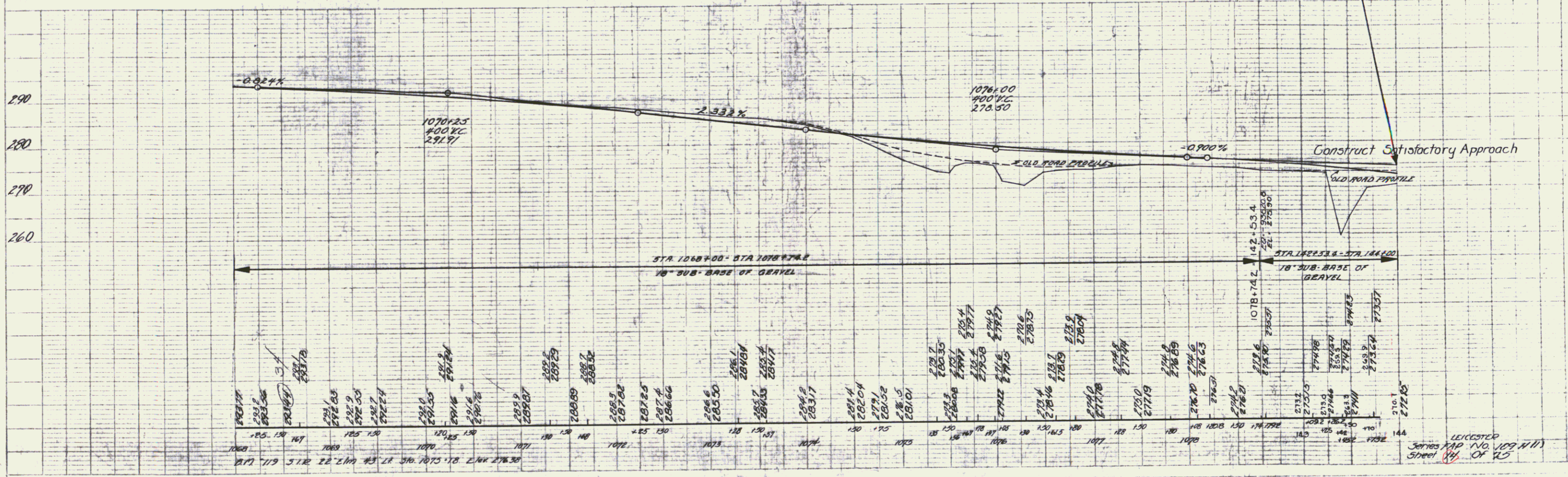
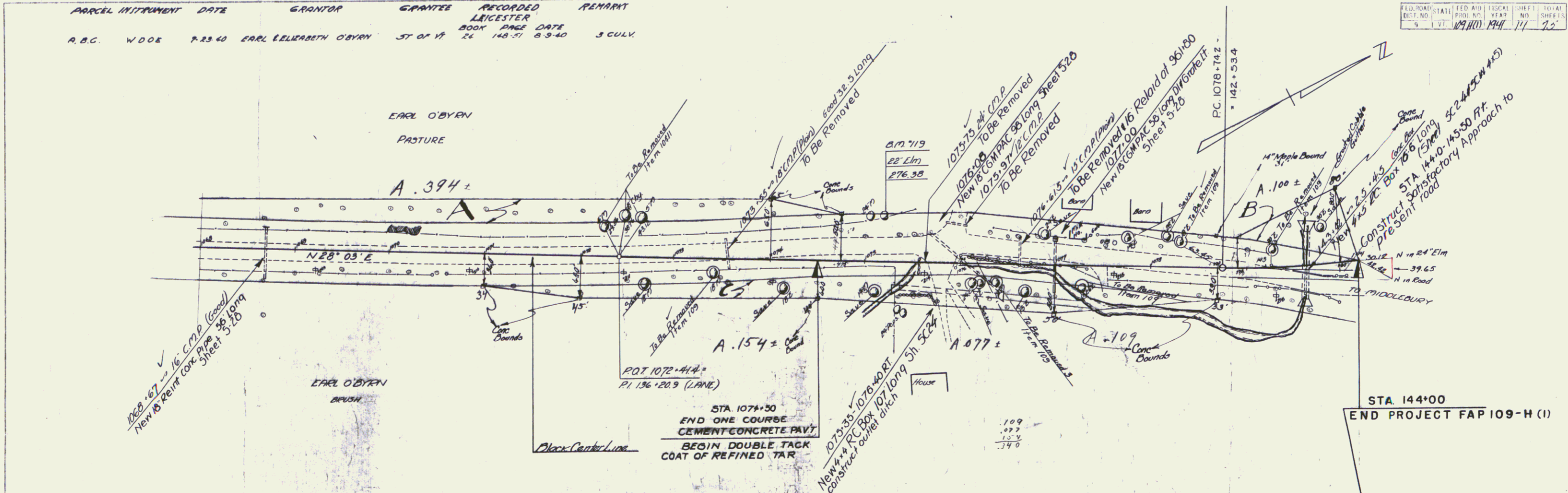
FED. ROAD DIST. NO.	STATE	FED. AID PROJ. NO.	YEAR	SHEET NO.	TOTAL SHEETS
9	VT.	109A(1)	1947	13	15



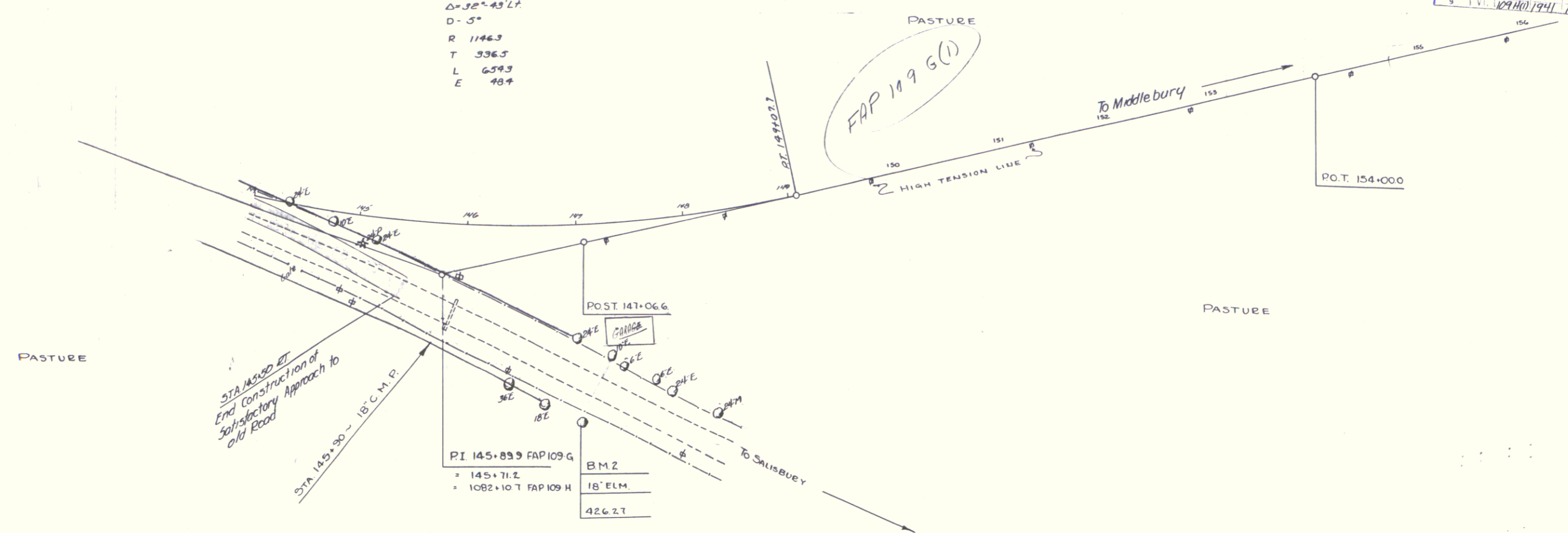
1068 Leicester Series 718 No. 109 (111) Street 13 of 75

PARCEL INSTRUMENT	DATE	GRANTOR	GRANTEE	RECORDED	REMARK
A.B.C. W.D.O.E.	8.23.40	EARL ELIZABETH O'BYRN	ST OF V	26 148-51 8-3-40	5 CULV.

FED. ROAD DIST. NO.	STATE	FED. AID PROJ. NO.	FISCAL YEAR	SHEET NO.	TOTAL SHEETS
4	VT	109-H(1)	1944	11	22



$\Delta = 32^\circ 43' 14''$
 $D = 5^\circ$
 $R = 1146.3$
 $T = 336.5$
 $L = 659.3$
 $E = 48.4$



In restor
 3/11/41
 sheet 13 of 23 sheets