

INDEX OF SHEETS	
SHEET NO. 1	TITLE PAGE
1-A	TYPICAL CROSS SECTION OF IMPROVEMENT (1 1/2" CRUSHED GRAVEL MIXED-IN-PLACE SURFACE COURSE WITH REFINED TAR, ITEM 341)
2	EARTHWORK SHEET
3	SUMMARY SHEET
4-6	PLAN AND PROFILE SHEETS
7	DETAILS OF ABUTMENTS
8	DETAILS OF PIERS
9	DETAILS OF SUPERSTRUCTURE
10	SUB-STRUCTURE SECTIONS, GENERAL NOTES & REINFORCING STEEL SCHEDULES
11	STANDARD STRUCTURE SHEET D.W.G. SB-5-C-1 CURB AND RAILING DETAILS
12	" " " " D.W.G. SB-20 DETAILS (B), (C), (I) & (J)
13	" " " " D.W.G. SB-11 BARRICADES, SIGNS AND LIGHTS (BRIDGE)
14	" " " " S-40 BARRICADES, SIGNS AND LIGHTS (ROADWAY)
15	" " " " S-48-46 THREE CABLE GUARD RAIL WITH STEEL POSTS
16	" " " " S-46-45 PROJECT MARKERS, BOUNDARY MARKERS
17-24	CROSS SECTIONS

STANDARD STRUCTURE SHEETS APPROVED BY THE CHIEF ENGINEER, VERMONT STATE DEPARTMENT OF HIGHWAYS.

D.W.G. SB-11 DEC. 18, 1945
 S-40 FEB. 28, 1949
 S-48-46 MAY 13, 1946
 S-46-45 FEB. 28, 1949

STATE OF VERMONT
 STATE HIGHWAY DEPARTMENT

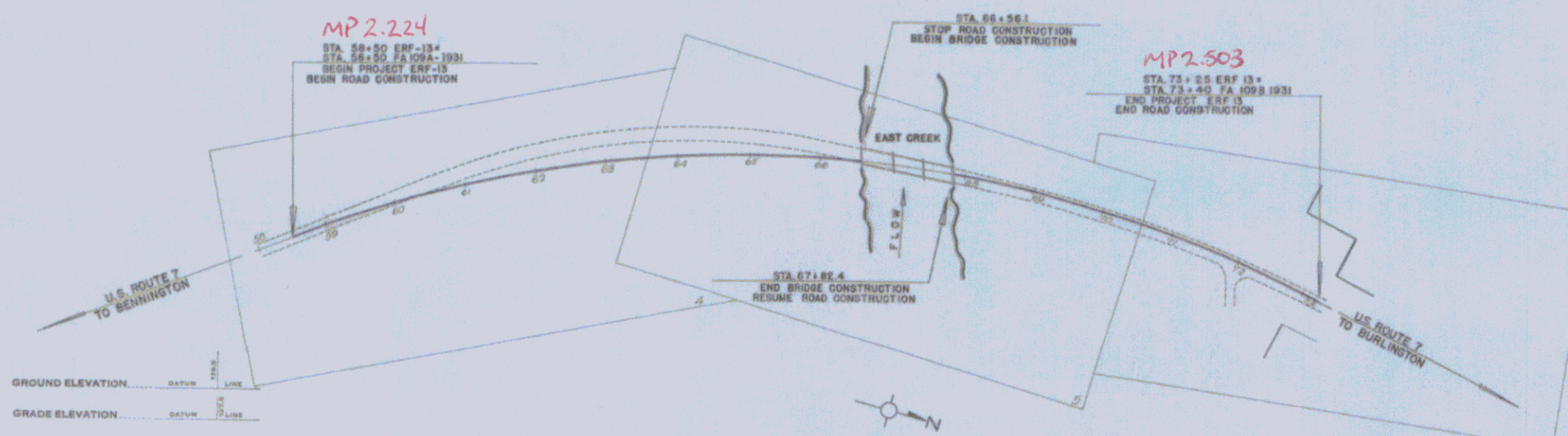
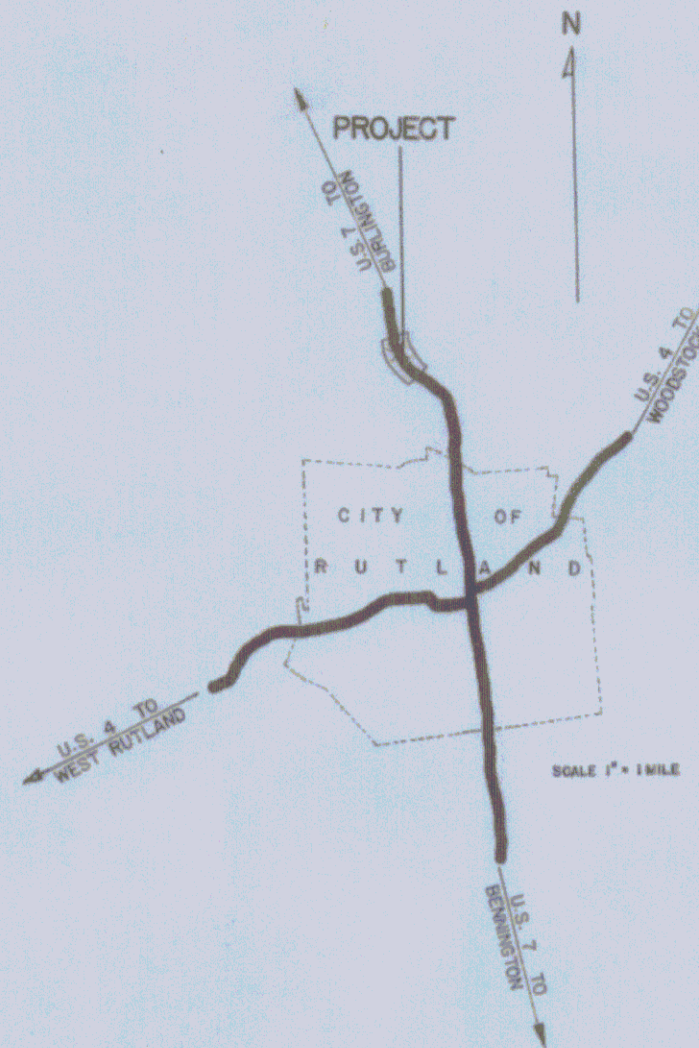
PLAN AND PROFILE OF PROPOSED
 STATE HIGHWAY

TOWN OF RUTLAND

COUNTY OF RUTLAND
 RUTLAND-PITTSFORD ROAD
 U.S. ROUTE 7
 LESTER BRIDGE
 BRIDGE PROJECT OVER EAST CREEK

LENGTH OF BRIDGE 126.3 FEET = 0.024 MILE
 LENGTH OF ROADWAY 1,350.7 FEET = 0.256 MILE
 LENGTH OF PROJECT 1,477.0 FEET = 0.280 MILE

FED. ROAD DIST. NO.	STATE	ROUTE	FEDERAL AID DIST. NO.	TOTAL LENGTH
D	Vt.	13	1	2.4



Handwritten notes on a sticky note:
 Lester Bridge over East Creek
 126.3 feet long
 1,350.7 feet roadway
 1,477.0 feet project
 5/11/50

CURVE DATA		SCALES	
DEFLECTION ANGLE	Δ	TITLE	1" = 100'
DEGREE OF CURVE	D	TYPICAL	1" = 5'
RADIUS OF CURVE	R	PLAN	1" = 20'
TANGENT DISTANCE	T	PROFILE HORIZONTAL	1" = 20'
LENGTH OF CURVE	L	VERTICAL	1" = 10'
EXTERNAL DISTANCE	E	CROSS SECTIONS	1" = 5'
POINT OF INTERSECTION	P. I.		
POINT OF CURVE	P. C.		
POINT OF TANGENT	P. T.		
POINT ON TANGENT	P. O. T.		

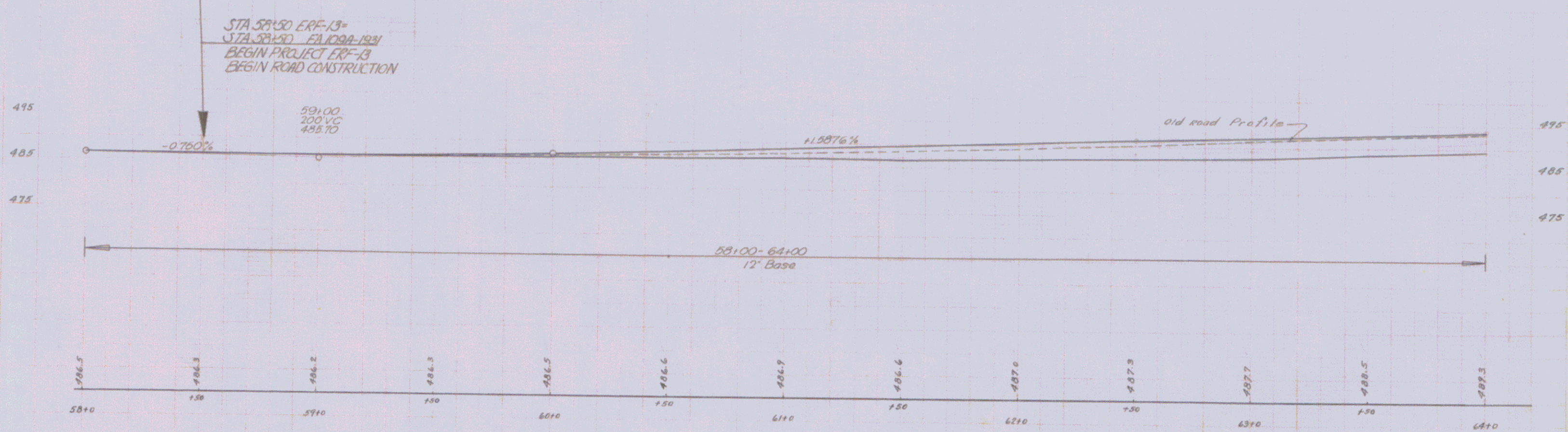
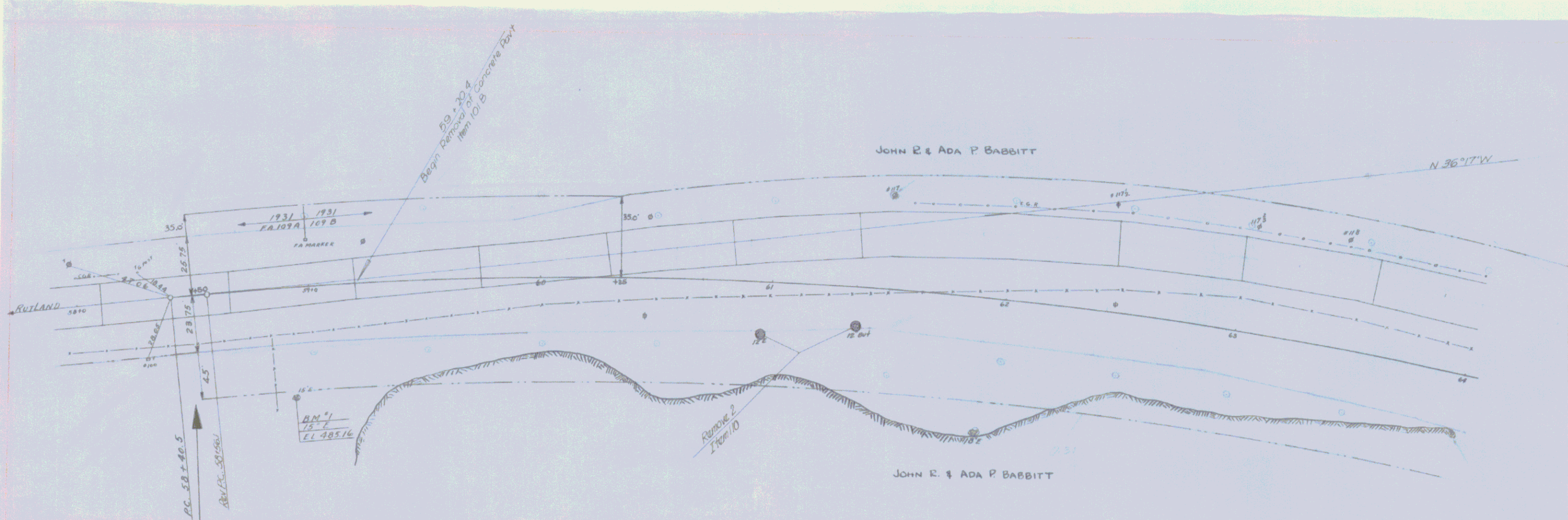
THESE PLANS ARE SUBJECT TO SUCH REVISIONS AS MAY BE REQUIRED BY THE PUBLIC ROADS ADMINISTRATION OR THE COMMISSIONER OF HIGHWAYS.
 CONSTRUCTION IS TO BE CARRIED ON IN ACCORDANCE WITH THE PLANS AND THE STANDARD ROAD AND BRIDGE SPECIFICATIONS OF 1945, INCLUDING ALL SUBSEQUENT APPROVED REVISIONS AND SUCH REVISED SPECIFICATIONS AND SPECIAL PROVISIONS AS ARE SUBMITTED WITH THE PLANS.

APPROVED: 5 JULY 1949
Ch. E. Langford
 CHIEF ENGINEER

Pin # 008850
 Date 7/6/1950

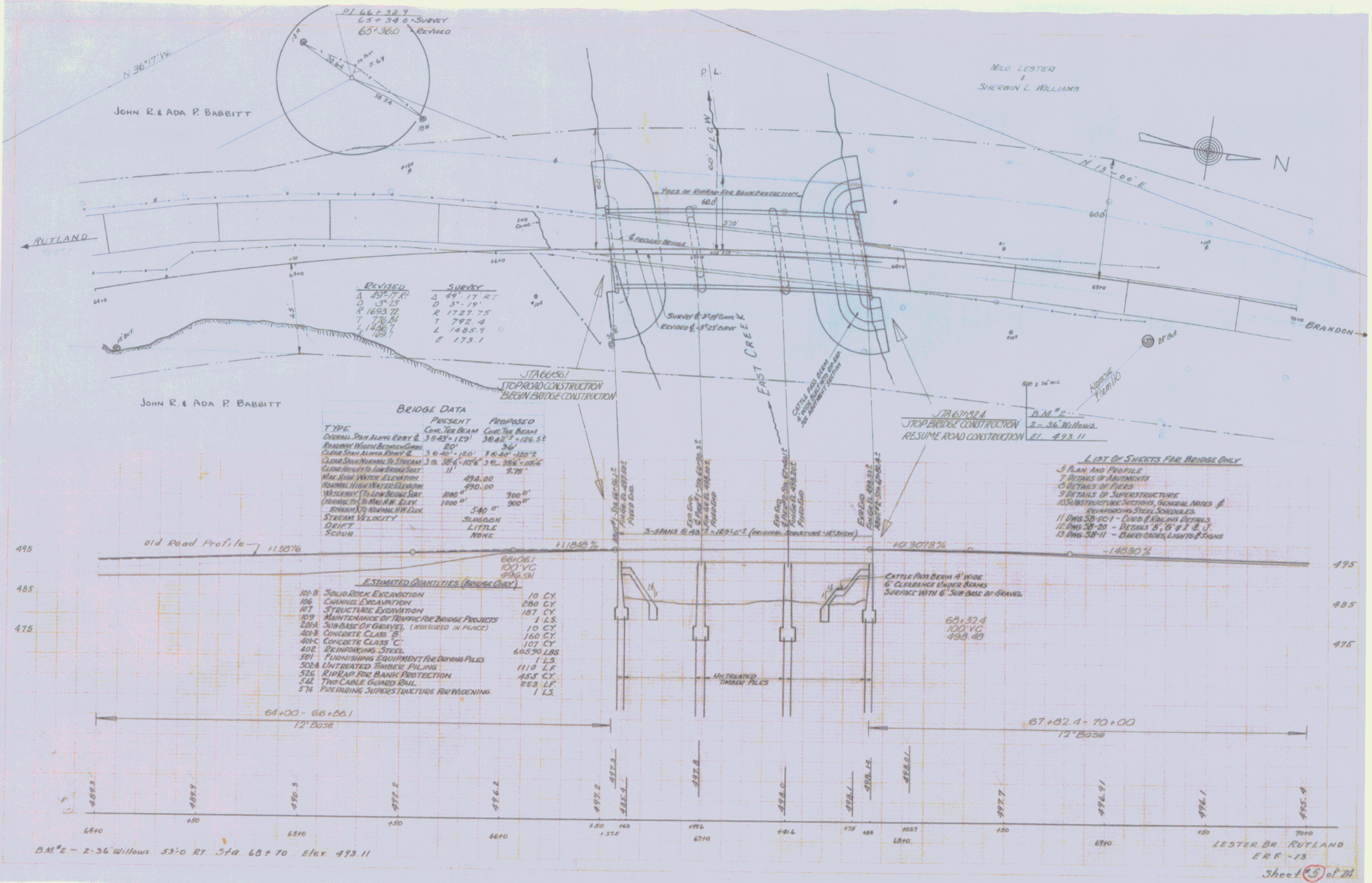
RECOMMENDED FOR APPROVAL
 DIRECT ENGINEER
 PUBLIC ROADS ADMINISTRATION
 FEDERAL WORKS AGENCY

APPROVED: May 24 1949 *W. J. [Signature]* BRIDGE ENGINEER
 APPROVED: June 1949 *W. C. Mansett* HIGHWAY ENGINEER
 APPROVED: May 24 1949 *Earl W. [Signature]* DISTRICT HIGHWAY COMMISSIONER
 SERIES ERF NO. 13 FILED
 SHEET 1 OF 24



DM #1 - 13' Elm 47'0 RT Sta 58+91 Elev 485.14

LESTER BR. RUTLAND
ERF-13
Sheet 4 of 24



	REVISED	SURVEY
A	49° 57' 01"	3 49° 17' RT
D	3° 25'	0 3° 19'
R	1693.72	R 1727.75
T	776.84	T 792.4
L	1436.1	L 1485.9
E	173.1	E 173.1

TYPE	BRIDGE DATA	
	PRESENT	PROPOSED
CONSTR. SPAN ALONG RARY &	39.43° 129'	38.82° 126.52'
ROADWAY WIDTH BETWEEN CURBS	20'	24'
CLEAR SPAN ALONG RARY &	39.43° 129'	38.82° 126.52'
CLEAR SPAN NORMAL TO STREAM	39.43° 129'	38.82° 126.52'
CLEAR SPAN TO LANDSCAPE	11'	9.75'
MAX. HIGH WATER ELEVATION	494.00	494.00
DESIGN HIGH WATER ELEVATION	490.00	490.00
WATERWAY TO LOWEST POINT	1800'	300'
WATERWAY TO MAIN RR. ELEV.	1800'	300'
STREAM TO MAIN RR. ELEV.	540'	300'
STREAM VELOCITY	SLUGGISH	SLUGGISH
DEFT	LITTLE	LITTLE
SCOUR	NONE	NONE

- LIST OF SHEETS FOR BRIDGE ONLY**
- 3 PLAN AND PROFILE
 - 7 DETAILS OF ABUTMENTS
 - 10 DETAILS OF PIERS
 - 9 DETAILS OF SUPERSTRUCTURE
 - 10 SUBSTRUCTURE SECTIONS, GENERAL NOTES & REINFORCING STEEL SCHEDULES
 - 11 DRG 5B-5C-1 - CURB & RAILING DETAILS
 - 12 DRG 5B-20 - DETAILS 'B', 'C' & 'D' U.
 - 13 DRG 5B-11 - BRICK CHIMNEY LIGHT FIXTURES

- ESTIMATED QUANTITIES (BRIDGE ONLY)**
- 101-B SOLID ROCK EXCAVATION 10 CY
 - 106 CHANNEL EXCAVATION 280 CY
 - 107 STRUCTURE EXCAVATION 187 CY
 - 109 MAINTENANCE OF TRAFFIC FOR BRIDGE PROJECTS 1 L.S.
 - 201A SUB-BASE OF GRAVEL (INTEGRATED IN PLACE) 10 CY
 - 401B CONCRETE CLASS 'B' 160 CY
 - 401C CONCRETE CLASS 'C' 107 CY
 - 402 REINFORCING STEEL 60590 LBS
 - 501 FURNISHING EQUIPMENT FOR DRIVING PILES 1 L.S.
 - 502A UNTREATED TIMBER PILING 1110 LF
 - 526 RIP-RAP FOR BANK PROTECTION 453 CY
 - 542 TWO CABLE GUARD RAIL 898 LF
 - 574 PREPARING SUPERSTRUCTURE FOR WIDENING 1 L.S.

