

INDEX OF SHEETS

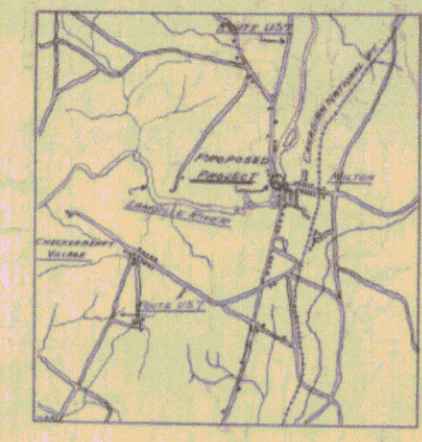
SHEET NO.	TITLE PAGE
2	TYPICAL CROSS-SECTION OF IMPROVEMENT 24' GRAVEL (MODIFIED AS PER CROSS-SECTIONS)
3	PLAN AND PROFILE STA.
4 TO 10	CROSS SECTIONS
11 - 13	SUPERSTRUCTURE DETAILS
14	SERIES S.D. No. 1
15-17	SUBSTRUCTURE DETAILS
18	SERIES S No 10 STANDARD STRUCTURES

DATE	BY	REVISION
7/16/28	Vt	1000 / 18

STATE OF VERMONT
STATE HIGHWAY DEPARTMENT

PLAN AND PROFILE OF PROPOSED
STATE HIGHWAY
FEDERAL AID PROJECT

TOWN OF MILTON
BURLINGTON-ST. ALBANS ROAD
BRIDGE AND APPROACHES
OVER LAMOILLE RIVER
LOCATED IN THE VILLAGE OF MILTON
LENGTH OF PROJECT 1102 FEET - 0.208 MILES



SCALE 1 MILE = 1 INCH

1929 Order on Burlington - St. Albans Road over Lamoylle River
Being Reported as OMA 6216
Contract 1477

SCALES
PLAN 1 INCH = 20 FEET
PROFILE VERT. 1 INCH = 20 FEET
HORIZ. 1 INCH = 20 FEET
SECTION 1 INCH = 5 FEET

LAYOUT
SEE SHEET 3

THIS PROJECT TO BE CONSTRUCTED IN ACCORDANCE WITH STANDARD SPECIFICATIONS ON FILE WITH THE U.S. BUREAU OF PUBLIC ROADS, APPROVED 7/7/26.
STRUCTURES ON THIS PROJECT TO BE CONSTRUCTED IN ACCORDANCE WITH DETAILS GIVEN ON STANDARD STRUCTURE SHEET, SERIES S/7-10/10

DISTRICT - No 8
BRIDGE - No 1516
- MILTON -

MP 5.040 - 5.248

Approved July 30, 1928
H. E. Sargent
COMMISSIONER OF HIGHWAYS

SUBMITTED BY ORDER OF THE STATE HIGHWAY BOARD

d. B. Babo
COMMISSIONER OF HIGHWAYS

Pin # 008843

Route US 7

RECOMMENDED
DISTRICT ENGINEER
BUREAU OF PUBLIC ROADS
RECOMMENDED FOR APPROVAL
CHIEF ENGINEER
BUREAU OF PUBLIC ROADS
APPROVED
DIRECTOR - BUREAU OF PUBLIC ROADS

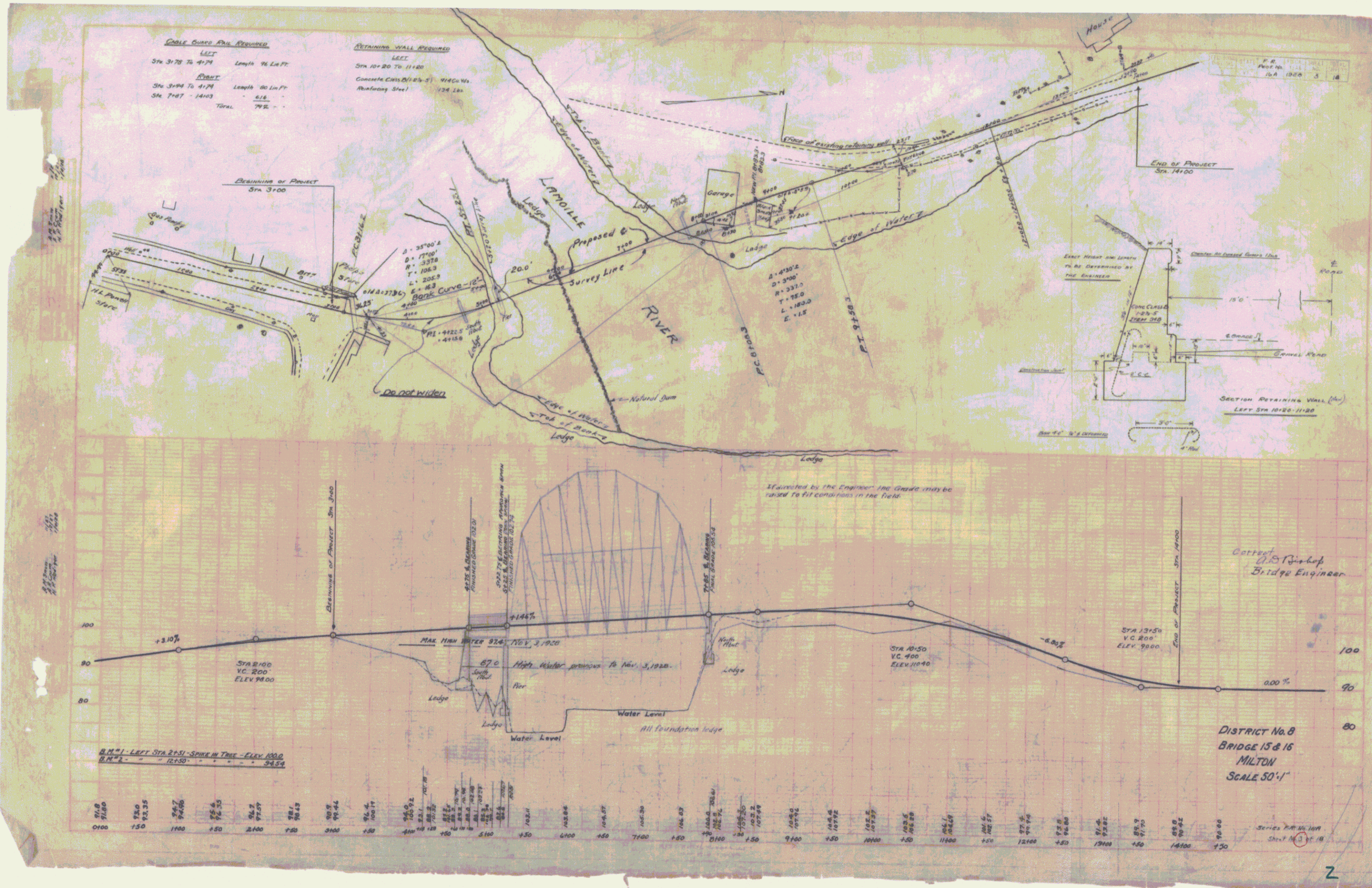
SERIES FR No 16A FILED
SHEET 1 OF 18

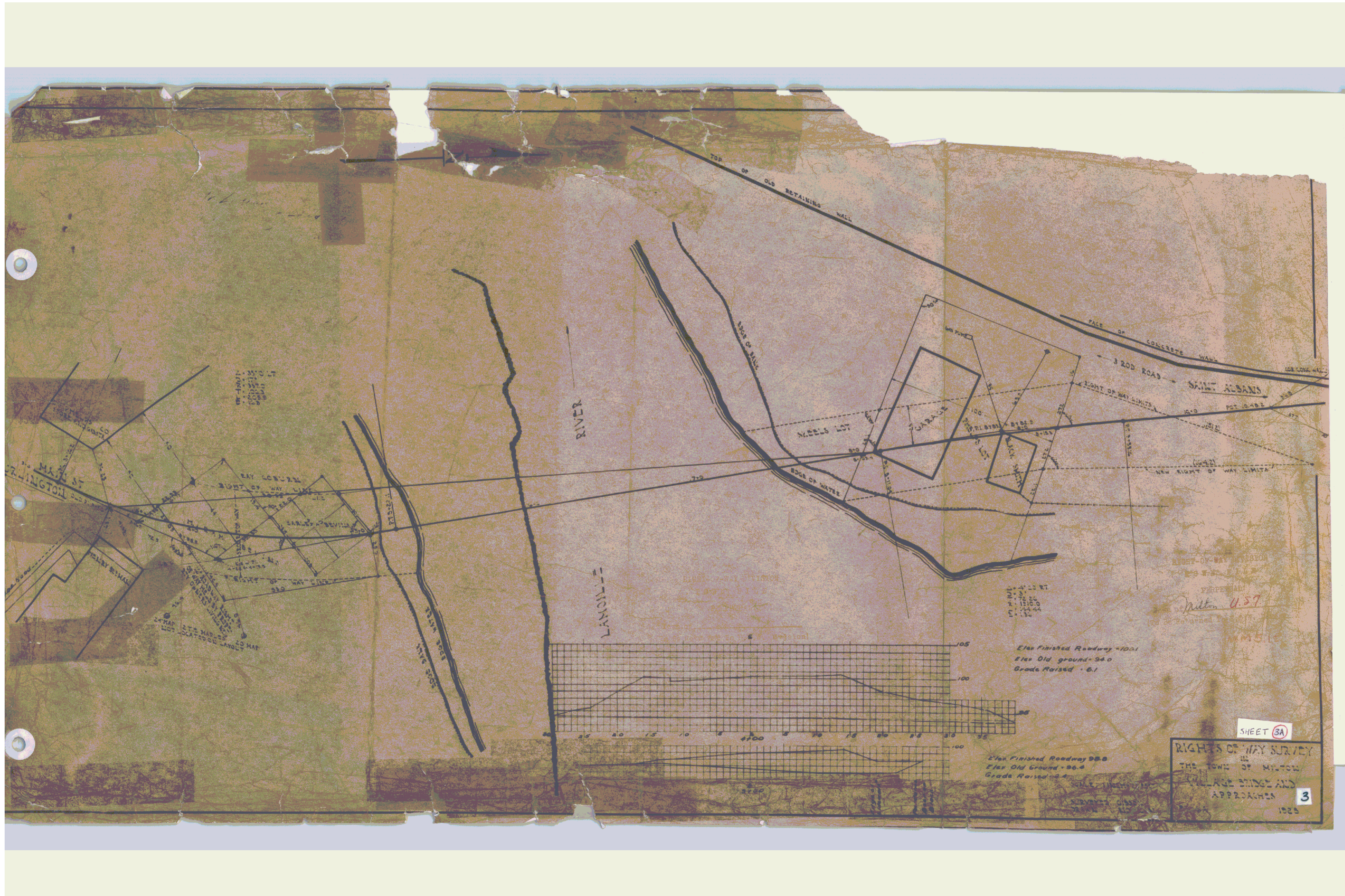
CONVENTIONAL SIGNS

COUNTY LINE	GROUND ELEVATION	
TOWN LINE	GRADE ELEVATION	
FENCE LINE		
STONE WALL		
UNFENCED PROPERTY		
GUARD RAIL		
TRAVELED WAY		
RAILROAD		
RETAINING WALL		
CENTER LINE		
SURVEY LINE		
CULVERT		
DROD INLET		
TROLLEY POLE		
POWER POLE		
TELEPHONE POLE		
TREES		
HEDGE		

CURVE DATA

DEFLECTION ANGLE	Δ
DEGREE OF CURVE	D
RADIUS OF CURVE	R
TANGENT DISTANCE	T
LENGTH OF CURVE	L
EXTERNAL DISTANCE	E
POINT OF INTERSECTION	P.I.
POINT OF CURVE	P.C.
POINT OF TANGENT	P.T.





SHEET 3A
 RIGHTS OF WAY SURVEY
 IN
 THE TOWN OF MILTON
 VILLAGE BRIDGE AND
 APPROACHES
 1923

Elev. Finished Roadway = 100.1
 Elev. Old ground = 94.0
 Grade Raised = 6.1

Elev. Finished Roadway = 98.8
 Elev. Old ground = 92.0
 Grade Raised = 6.8

Milton 437
 (to be returned to...)