

DATE	
BY	
CHECKED	
APPROVED	
NO. OF SHEETS	
NO. OF SHEETS USED	
NO. OF SHEETS LEFT	
NO. OF SHEETS RIGHT	
NO. OF SHEETS CENTER	
NO. OF SHEETS LEFT	
NO. OF SHEETS RIGHT	
NO. OF SHEETS CENTER	
NO. OF SHEETS LEFT	
NO. OF SHEETS RIGHT	
NO. OF SHEETS CENTER	

DATE	
BY	
CHECKED	
APPROVED	
NO. OF SHEETS	
NO. OF SHEETS USED	
NO. OF SHEETS LEFT	
NO. OF SHEETS RIGHT	
NO. OF SHEETS CENTER	
NO. OF SHEETS LEFT	
NO. OF SHEETS RIGHT	
NO. OF SHEETS CENTER	

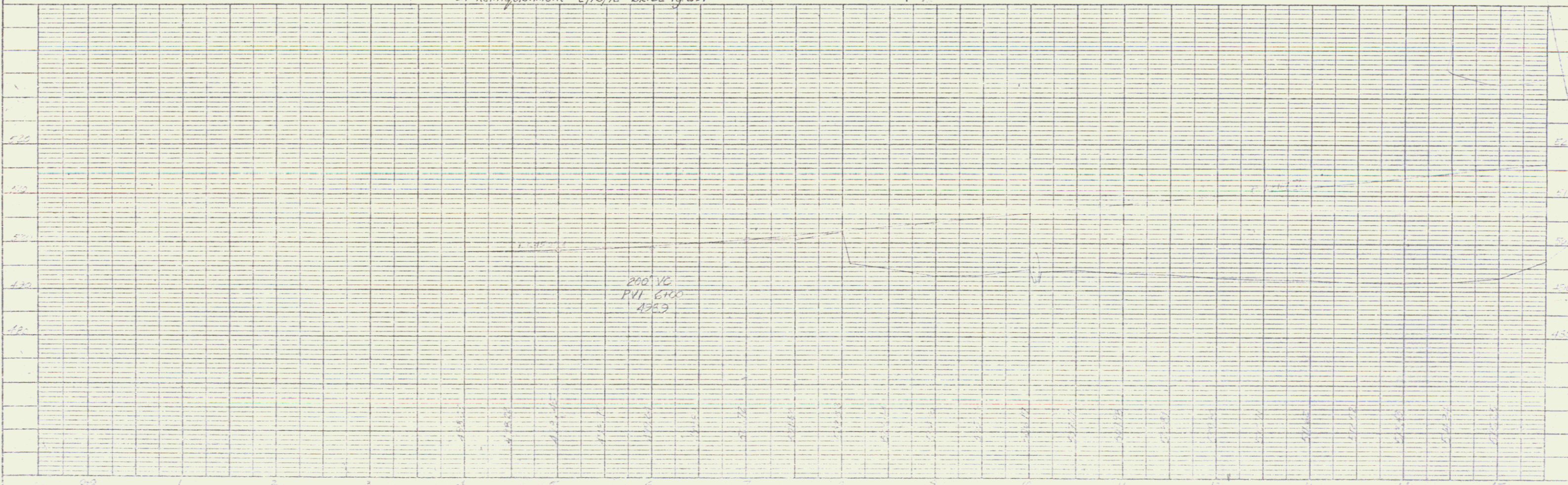
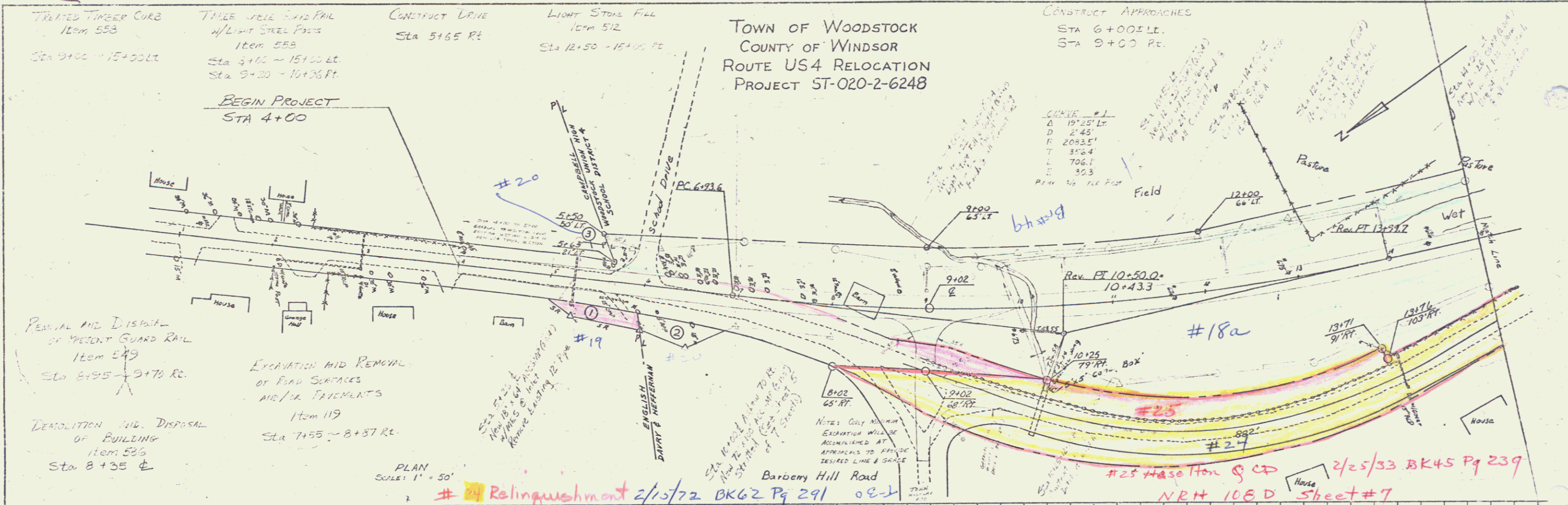


PLATE 1, RANK-CHIEF

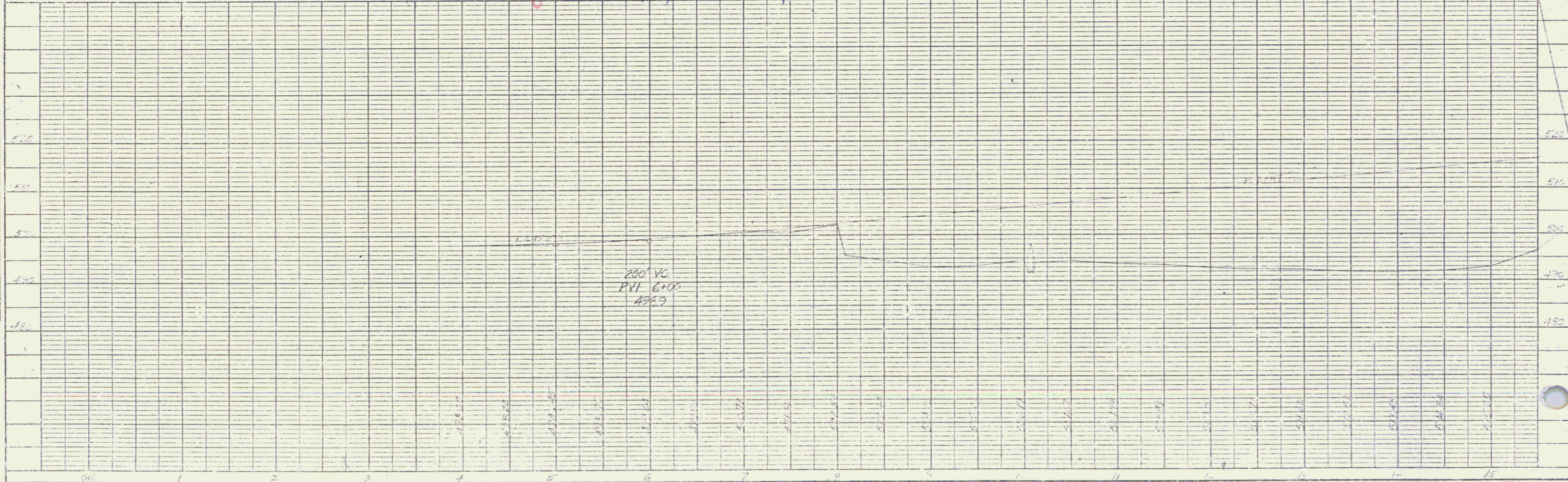
Sheet 1A of 7

8 1245



DATE	
BY	
CHECKED	
APPROVED	
SCALE	
PROJECT	
NO.	

DATE	
BY	
CHECKED	
APPROVED	
SCALE	
PROJECT	
NO.	



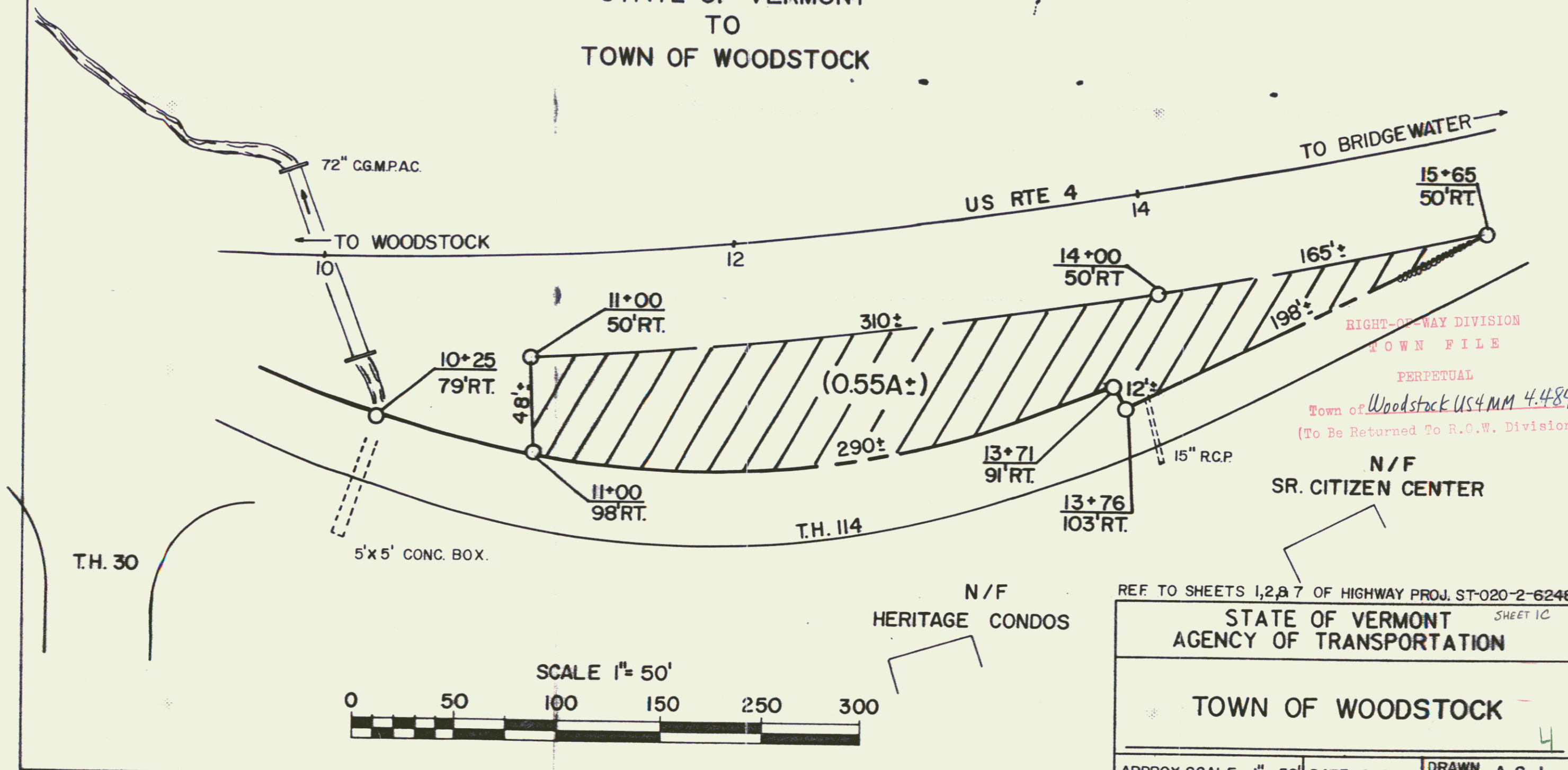
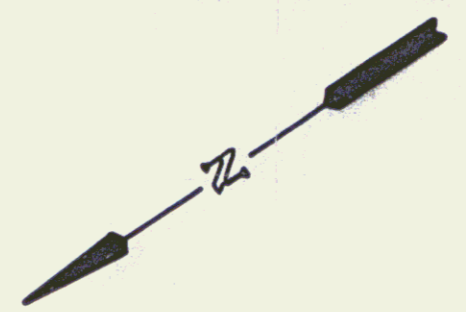
SCALE 1" = 50'

Sheet 18 of 7

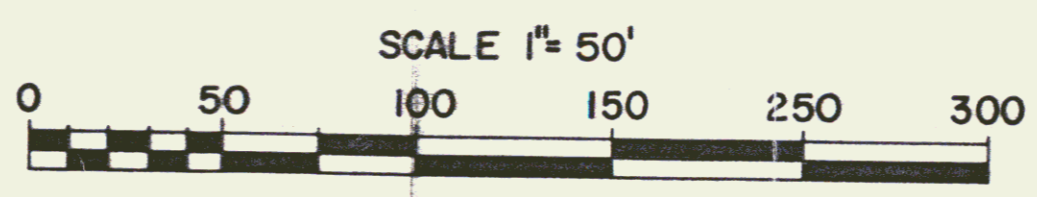
3

BEING PART OF THE LAND AND PREMISES ACQUIRED BY THE STATE OF VERMONT FROM THE UNION HIGH SCHOOL DIST. NO. 4 BY WD. DATED SEPT. 18, 1956 AND RECORDED OCT. 20, 1956 IN BK. 54, PG. 26 OF THE TOWN OF WOODSTOCK LAND RECORDS.

STATE OF VERMONT
TO
TOWN OF WOODSTOCK



RIGHT-OF-WAY DIVISION
TOWN FILE
PERPETUAL
Town of Woodstock US4MM 4.484
(To Be Returned To R.O.W. Division)



REF. TO SHEETS 1,2,3,7 OF HIGHWAY PROJ. ST-020-2-6248

STATE OF VERMONT AGENCY OF TRANSPORTATION	
TOWN OF WOODSTOCK	
APPROX. SCALE 1" = 50'	DATE 8-8-88
DRAWN BY A. S. J.	

TREATISE TIMBER CURVE
Item 553
Sta 15+00 ~ 16+50 Lt.

THREE CABLE GUARD RAIL
W/Lt. Steel Posts
Item 533
Sta 15+00 ~ 16+56 Lt.

CONSTRUCT DRIVES
Sta 17+05 Lt.
Sta 18+50 Lt.

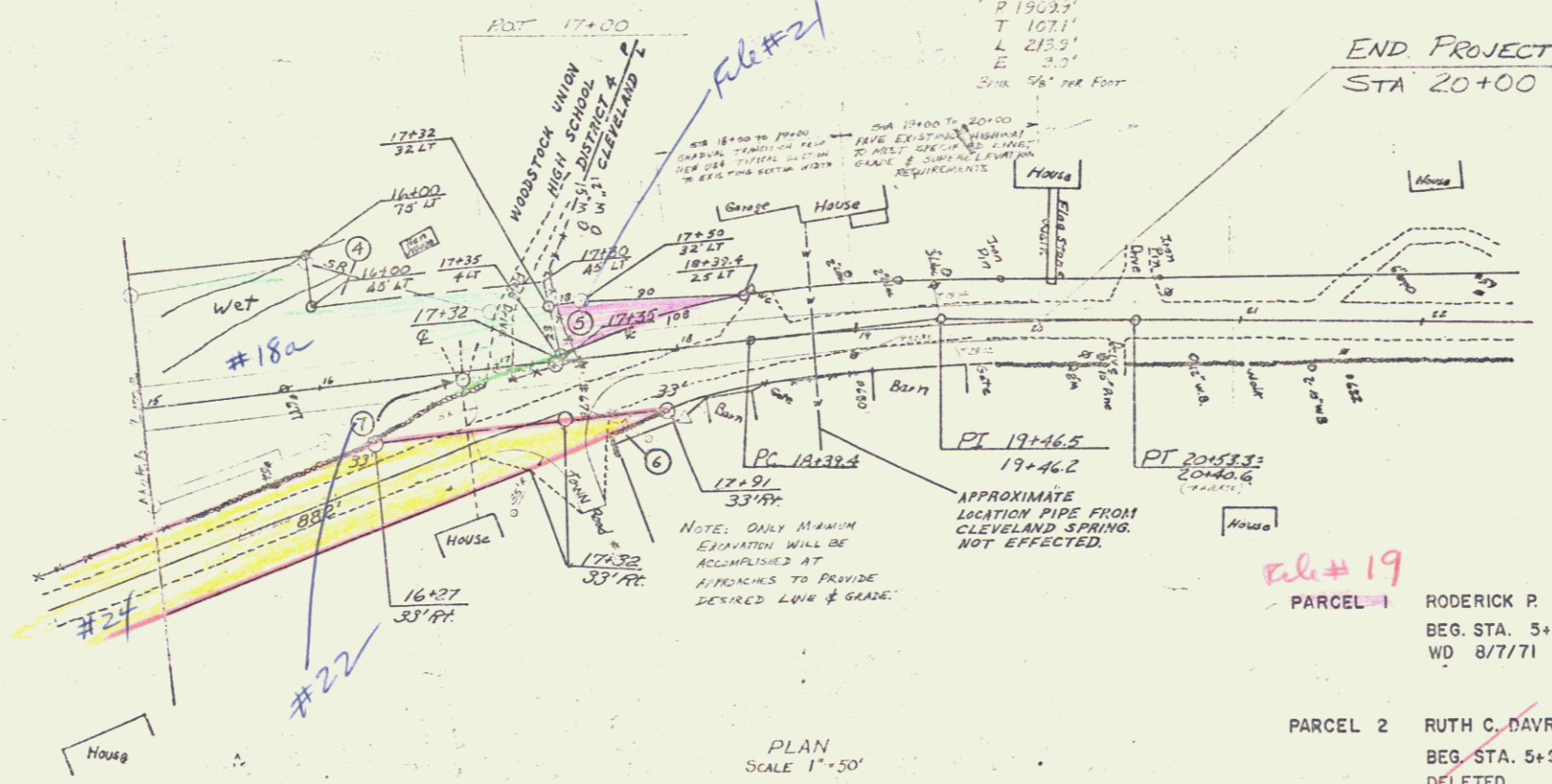
Light Stone Fill
Item 512
Sta 15+00 ~ 15+75 Lt.

CONSTRUCT APPROACH
Sta 17+20 Rt.

CURVE # 2
Δ 6° 25' R
D 3+00'
P 190.23'
T 102.11'
L 213.9'
E 3.0'
Sta. 96' PER FOOT

END PROJECT
Sta 20+00

PLAN	DATE
DATE	BY
DATE	BY
DATE	BY
DATE	BY



PLAN
SCALE 1" = 50'

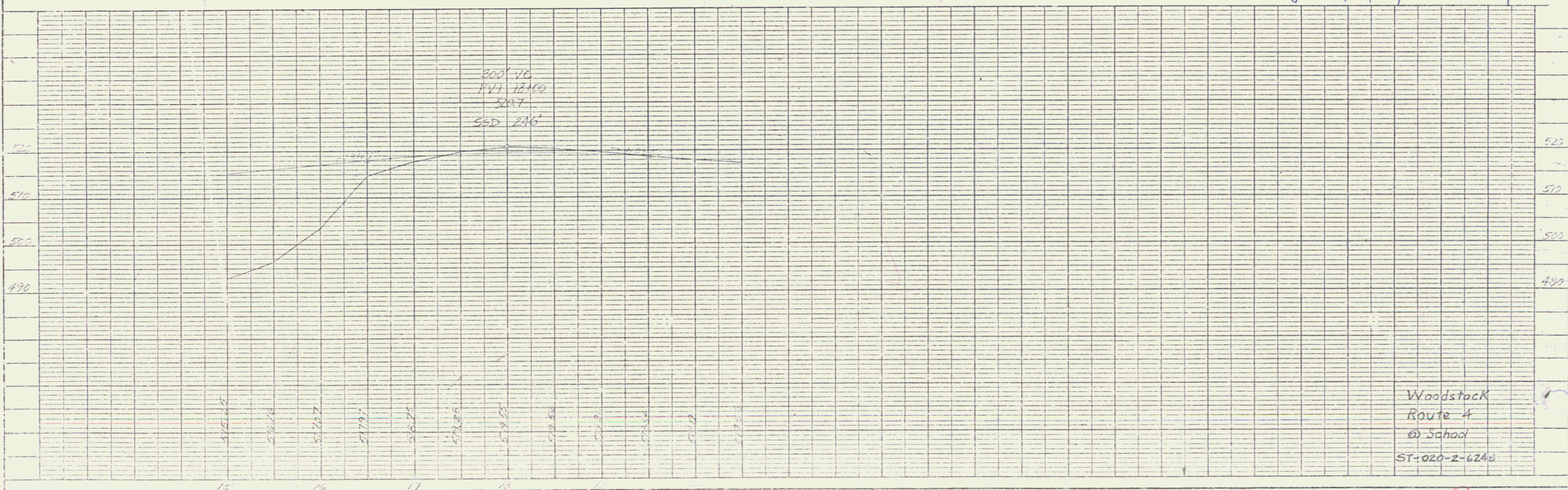
- #20
PARCEL 3 FREEMAN E. & RUTH G. CAMPBELL.
BEG. STA. 5+20 LT. END STA. 5+65 LT.
CULVERT & DRAINAGE (P)
WD 2/10/71 BK.60 PG.407
- #18a
PARCEL 4 WOODSTOCK UNION HIGH SCHOOL DISTRICT NO. 4
BEG. STA. 16+00 LT. END STA. 16+65 LT. SLOPE (T) 800 S.F.±
WD 12/2/71 BK.62 PG. 217
- #21
PARCEL 5 GUY H. & EVELYN H. CLEVELAND
BEG. STA. 17+32 LT. END STA. 18+39.4 LT.
TAKE 1500 S.F.± REM. 1.3 ACRES±
WD 3/3/71 BK.60 PG. 415
- PARCEL 6 HOWARD G. NICHOLS
BEG. STA. 17+60 RT. END STA. 18+15 RT. SLOPE 400 S.F.± (T)
~~DELETED PLANS CHANGED IN FIELD~~
- #22
PARCEL 7 WILLIAM BEEBE
16+78 RT. SEPTIC TANK & DRYWELL
REMOVAL BY AGREEMENT
AGREEMENT 8/24/71 BK.62 PG. 151

File # 19
PARCEL 1 RODERICK P. & EVALYN B. ENGLISH
BEG. STA. 5+00 RT. END STA. 6+00 RT. SLOPE (T) 1200 S.F.±
WD 8/7/71 BK.62 PG.125

PARCEL 2 RUTH C. DAVRY & CELESTE HEFFERNAN
BEG. STA. 5+95 RT. END STA. 6+90 RT. SLOPE (T) 1500 S.F.±
~~DELETED PLANS CHANGED IN FIELD~~

File # 18a Union High School Dist 4
Comp. Deed 8/20/50 BK 54 Pg 26

PROFILE	DATE
DATE	BY
DATE	BY
DATE	BY
DATE	BY



Woodstock
Route 4
School
ST-020-2-624a