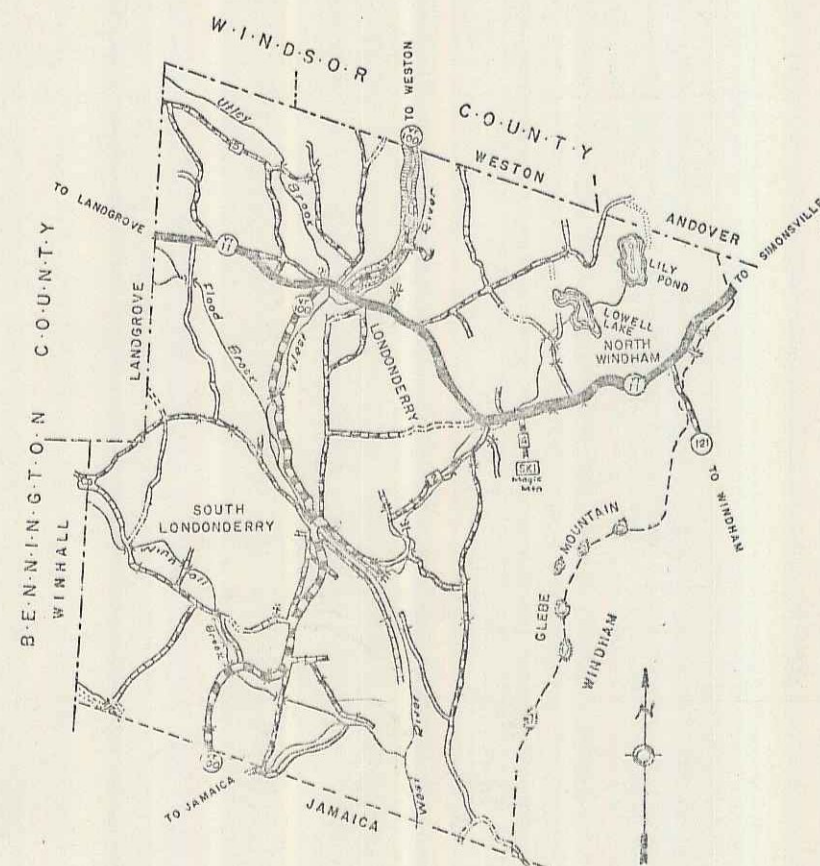


TOWN OF LONDONDERRY
COUNTY OF WINDHAM
VERMONT ROUTE #100
JAMAICA-WESTON ROAD

BEGINNING AT THE JUNCTION OF VT. RTE #11 AND
 VT. RTE. #100 AND EXTENDING NORTHERLY 1.826 MILES.

LENGTH OF PROJECT, 9,640.7 FEET= 1.826 MILES

MP 5.81-7.65



Pm: 00R827
Project: S 242(2)
Date: 01/01/1952

RIGHT-OF-WAY DIVISION
 TOWN FILE
 PERPETUAL
 Town of VT 100
 (To Be Returned To R.O.W. Division)

LONDONDERRY

SCALE 1" = 1 MILE

LEGEND

PROJECT S# 242(2) 1952
 PROJECT S# 242(1)

LONDONDERRY

SURVEYED BY FOGAR DATE 1951
 DRAWN BY WAL DATE 5-5-52
 TRACED BY WAL DATE 9-2-54
 LONDONDERRY, V.T. RTE. NO.
 PROJ. S NO. 242(2)
 SHEET 1 OF 5

STEARNS R. JENKINS = VT 100 1

INDEX OF SHEETS

SHEET NO. 1	TITLE PAGE
2	TYPICAL CROSS-SECTION OF IMPROVEMENT DOUBLE TRACK COAT OF REFINED TAR WITH SAND-GRAVEL SEAL, ITEM S11-A
3	BANKING AND WIDENING TABLES
4	QUANTITY SHEET (ITEMS AND DRAINAGE)
5-7	EARTHWORK SHEETS
8-13	PLAN AND PROFILE SHEETS
14	CONSTRUCTION DETAILS (DRAINAGE AND MARKERS)
15	CONSTRUCTION DETAILS CD 1 (DITCHES)
16	STANDARD STRUCTURE SHEET S 40 (BARRICADES, SIGNS & LIGHTS)
16-A	STANDARD STRUCTURE SHEET S 53-48 (P.C. CATCH BASINS)
17-32	CROSS SECTIONS

STANDARD STRUCTURE SHEET APPROVED BY THE CHIEF ENGINEER, VERMONT STATE DEPARTMENT OF HIGHWAYS.

S-40 JUNE 10, 1950

NOTE - Any further information concerning final quantities, amounts or other details relative to this project may be found in either the field books or the estimate file.

STATE OF VERMONT
STATE HIGHWAY DEPARTMENT

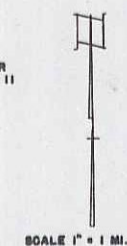
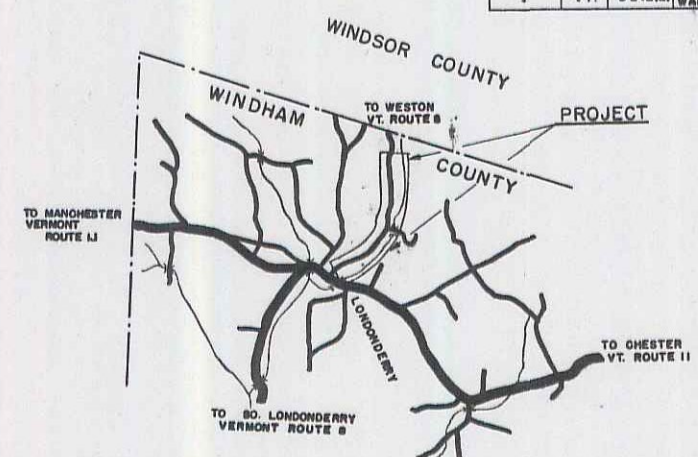
PLAN AND PROFILE OF PROPOSED
STATE HIGHWAY

SECONDARY PROJECT
TOWN OF LONDONDERRY
COUNTY OF WINDHAM
VERMONT ROUTE 8
LONDONDERRY-WESTON ROAD

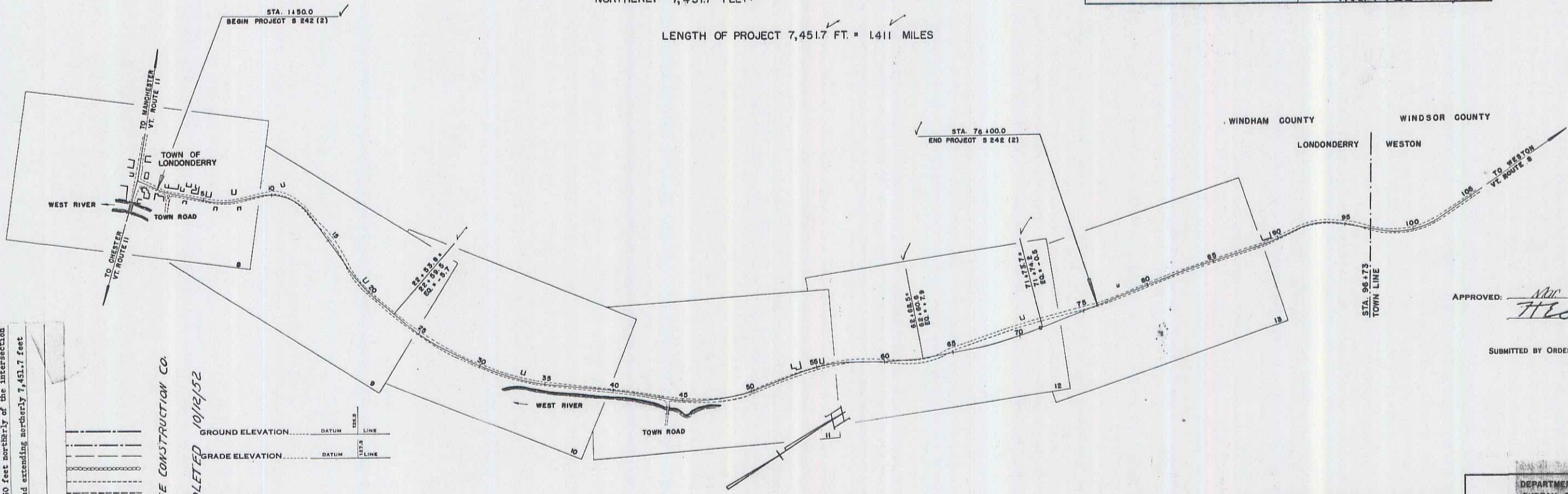
BEGINNING AT A POINT 150 FEET NORTHERLY OF THE INTERSECTION OF VERMONT ROUTE 11 AND VERMONT ROUTE 8 AND EXTENDING NORTHERLY 7,451.7 FEET

LENGTH OF PROJECT 7,451.7 FT. = 1.411 MILES

FED. ROAD DIV. NO.	STATE	PROJ. NO.	FISCAL YEAR	SHEET NO.	TOTAL SHEETS
1	VT.	8242	1952	1	32



PROJECT NAME AND NUMBER	TYPE	PAVEMENT AREA
LONDONDERRY S-242-(2)	DOUBLE TRACK	1,668.9 SQ. YD.
RECORD PLANS		
MATERIALS		
STONE-VT SAND-GRAVEL	GRAVEL	MERRILL PIT
ADKINGHAM VT		LONDONDERRY VT
TAR-KOOPER'S PRODUCTS CO		
EVERETT MASS.		
P.C.P. - VT CONCRETE PIPE		
CO. WINDSOR VT		
WINDMORSE CONSTRUCTION		CONTRACT DATED JUNE 13, 1952
LUZERNE CO.		" STARTED JULY 26, 1952
RES. ENGR. - R. J. WOODWARD		" COMPLETED OCT 12, 1952
RECORD PLANS BY R. J. WOODWARD		" ACCEPTED NOV 6, 1952



TOWN OF LONDONDERRY
PROJECT S 242 (2)
7,451.7' LONG
1.411 MI.
TYPE Double Track Coat of Refined Tar With Sand-Gravel Seal.
ITEM S11-A
CONTRACTOR M. H. Morse Construction & Lumber Co.
10-12 YEAR IS 25
VT. ROUTE 8-LONDONDERRY DISTRICT 1013
Beginning at a point 150 feet northerly of the intersection of Yr. Route 11 & Yr. Route 8, and extending northerly 7,451.7 feet

CONTRACTOR - M. H. MORSE CONSTRUCTION CO.
RECORD PLANS COMPLETED 10/12/52

GROUND ELEVATION	DATUM	LINE
GRADE ELEVATION	DATUM	LINE

CURVE DATA

DEFLECTION ANGLE	Δ
DEGREE OF CURVE	D.
RADIUS OF CURVE	R.
TANGENT DISTANCE	T.
LENGTH OF CURVE	L.
EXTERNAL DISTANCE	E.
POINT OF INTERSECTION	P. I.
POINT OF CURVE	P. C.
POINT OF TANGENT	P. T.
POINT ON TANGENT	P. O. T.

SCALES

TITLE	1" = 400'
TYPICAL	1" = 2'
PLAN	1" = 80'
PROFILE HORIZONTAL	1" = 60'
PROFILE VERTICAL	1" = 10'
CROSS SECTIONS	1" = 5'

APPROVED: *Nov 17 1952*
H. E. Sargent
CHIEF ENGINEER.
SUBMITTED BY ORDER OF THE STATE HIGHWAY BOARD

THESE PLANS ARE SUBJECT TO SUCH REVISIONS AS MAY BE REQUIRED BY THE BUREAU OF PUBLIC ROADS OR THE COMMISSIONER OF HIGHWAYS.

CONSTRUCTION IS TO BE CARRIED ON IN ACCORDANCE WITH THE PLANS AND THE STANDARD ROAD AND BRIDGE SPECIFICATIONS OF 1948, AS APPROVED JULY 28 1949 BY THE BUREAU OF PUBLIC ROADS INCLUDING ALL SUBSEQUENT APPROVED REVISIONS AND SUCH REVISED SPECIFICATIONS AND SPECIAL PROVISIONS AS ARE SUBMITTED WITH THE PLANS.

DEPARTMENT OF COMMERCE
BUREAU OF PUBLIC ROADS

RECOMMENDED FOR APPROVAL

DISTRICT ENGINEER DATE

APPROVED

DIVISION ENGINEER DATE

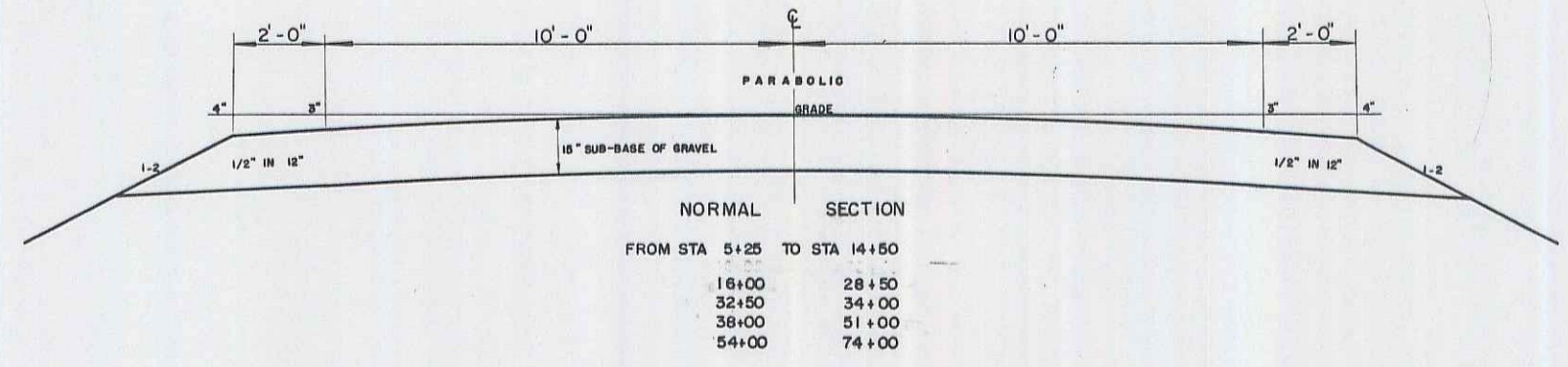
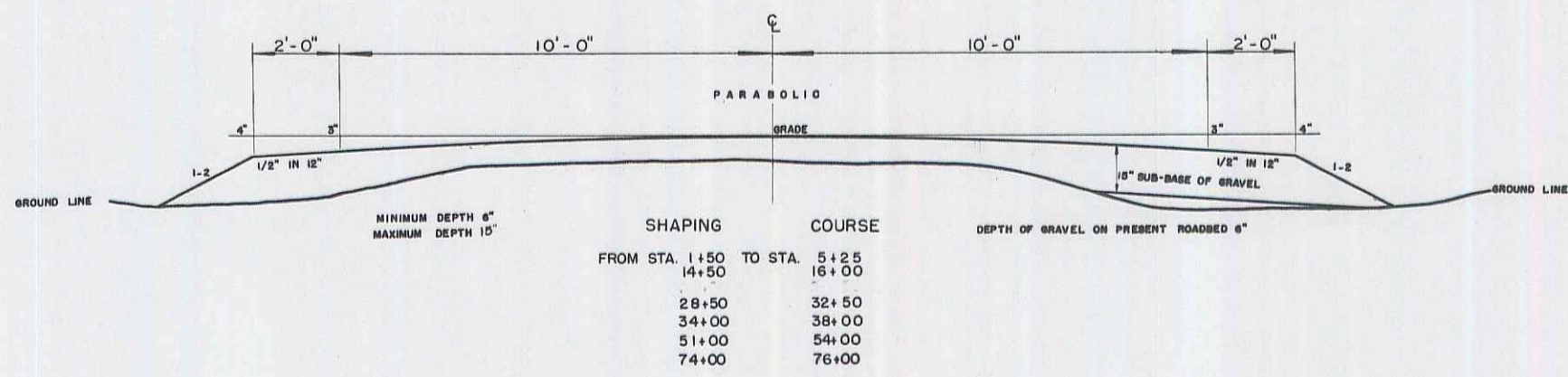
PROJECT S NO. 242 (2) FILED
SHEET 1 OF 32

APPROVED <i>Jan 27 1952</i> CONSTRUCTION ENGINEER	APPROVED <i>Feb 26 1952</i> SECONDARY ENGINEER	APPROVED <i>Nov 26 1952</i> HIGHWAY ENGINEER	APPROVED <i>Nov 7 1952</i> DISTRICT ENGINEER
--	---	---	---

1A 2

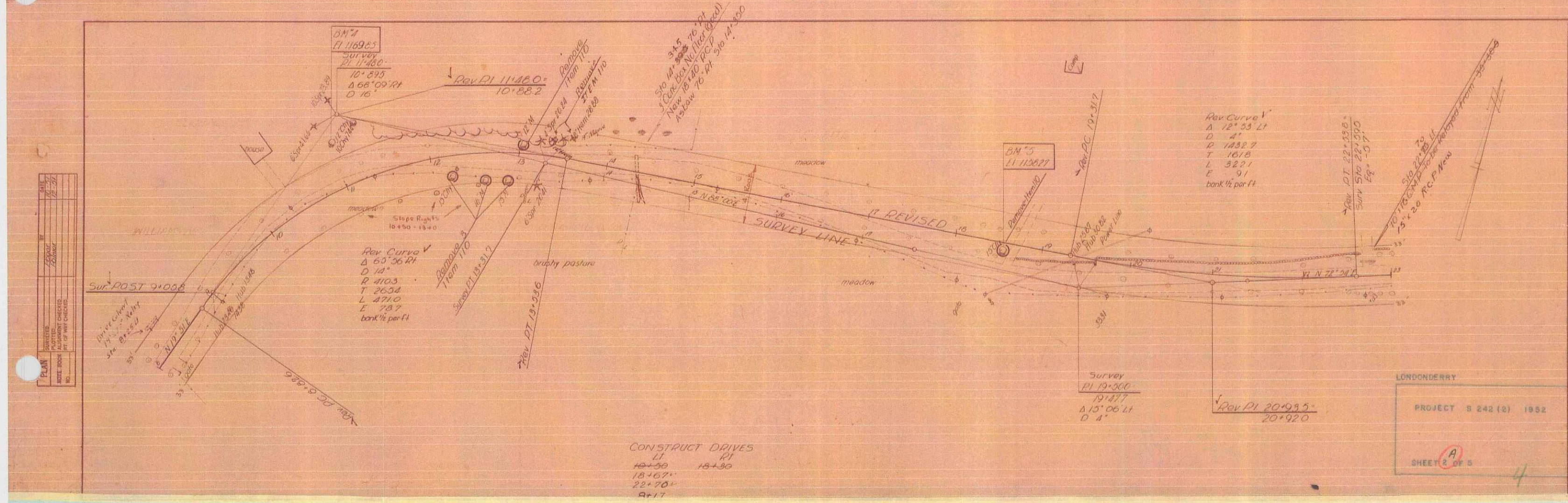
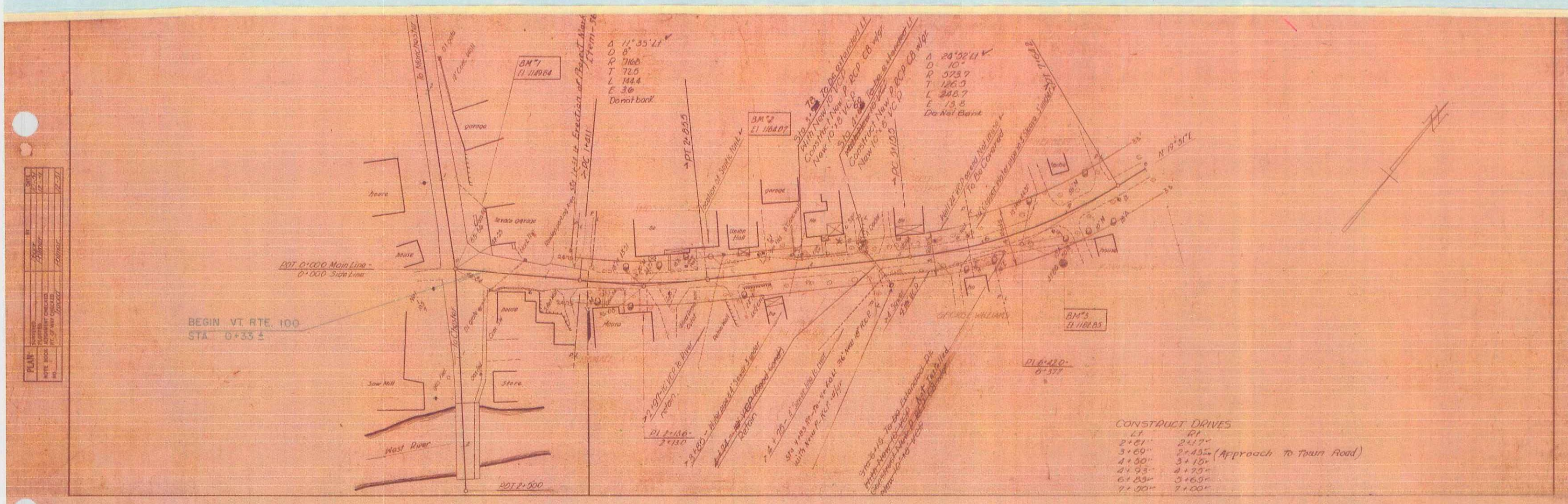
TYPICAL SECTIONS

DOUBLE TACK COAT OF REFINED TAR WITH SAND-GRAVEL SEAL, ITEM 311-A
 (15") SUB-BASE OF GRAVEL, ITEM 201-A

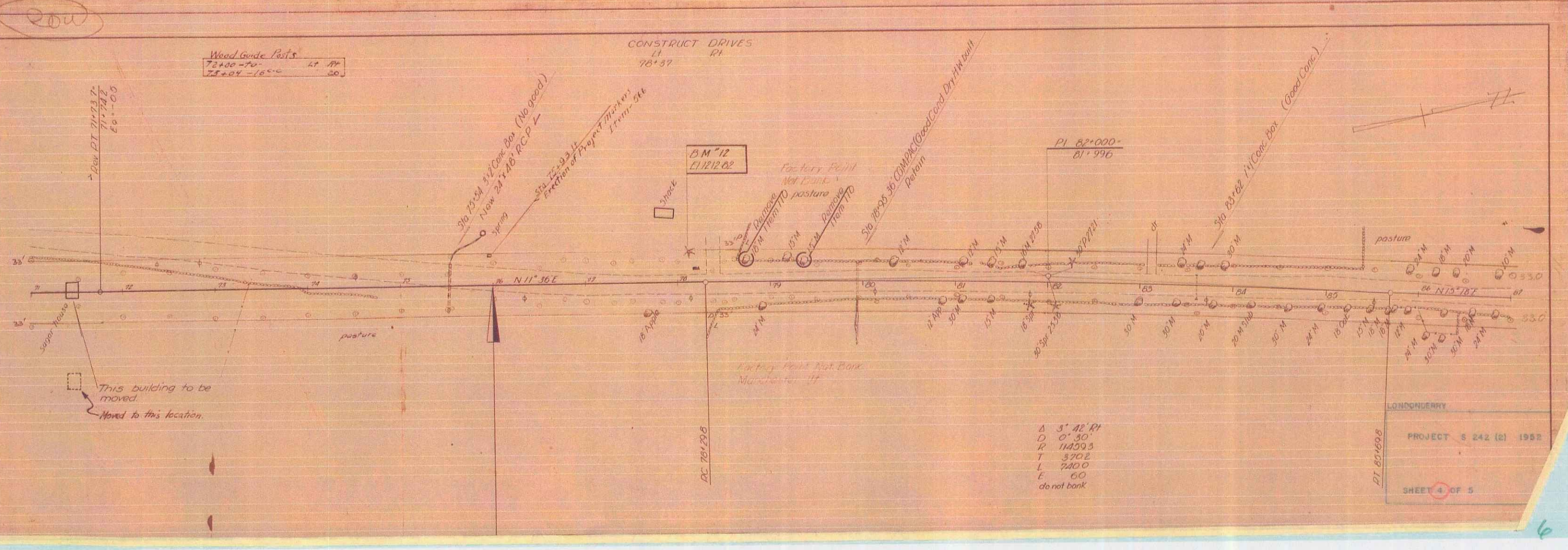
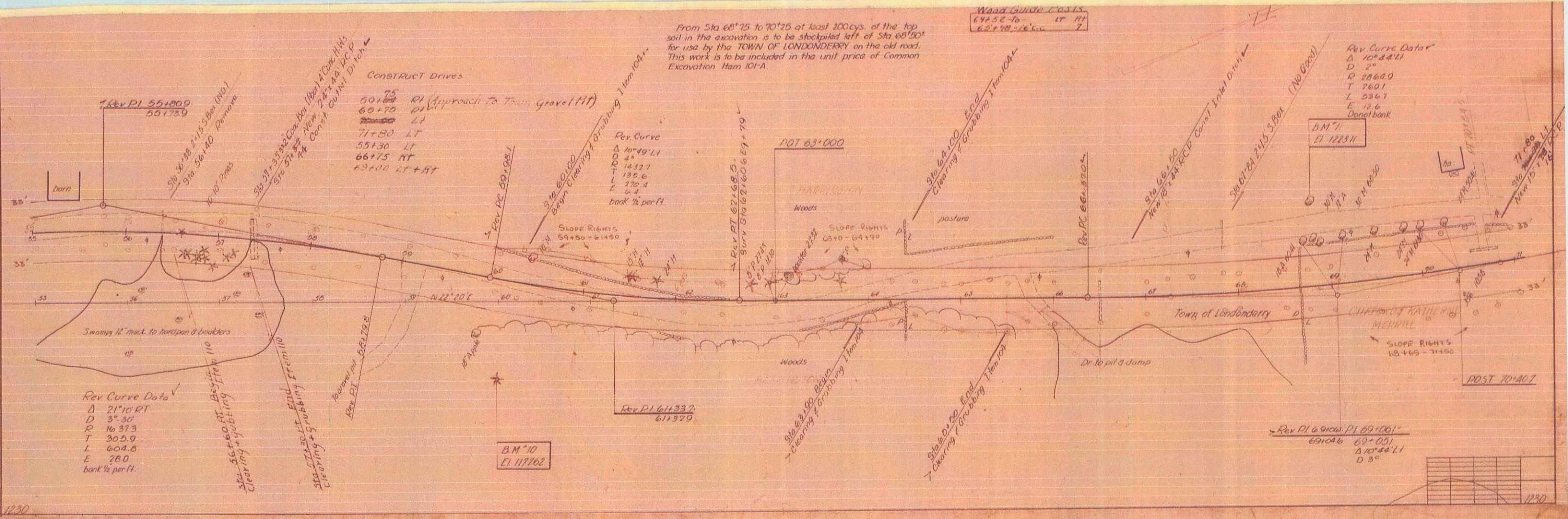


LONDONDERRY

Surveyed by	POGAR	1951
Designed by	N.L.S.	FEB 1952
Drawn by	A.J.A.	
Traced by	A.J.A.	
Checked by		
PROJECT S	No. 242 (2)	Filed
	Sheet 2	of 32 Sheets



PLAN	DATE	BY
REVISED	DATE	BY
APPROVED	DATE	BY
CHECKED	DATE	BY
DATE	BY	

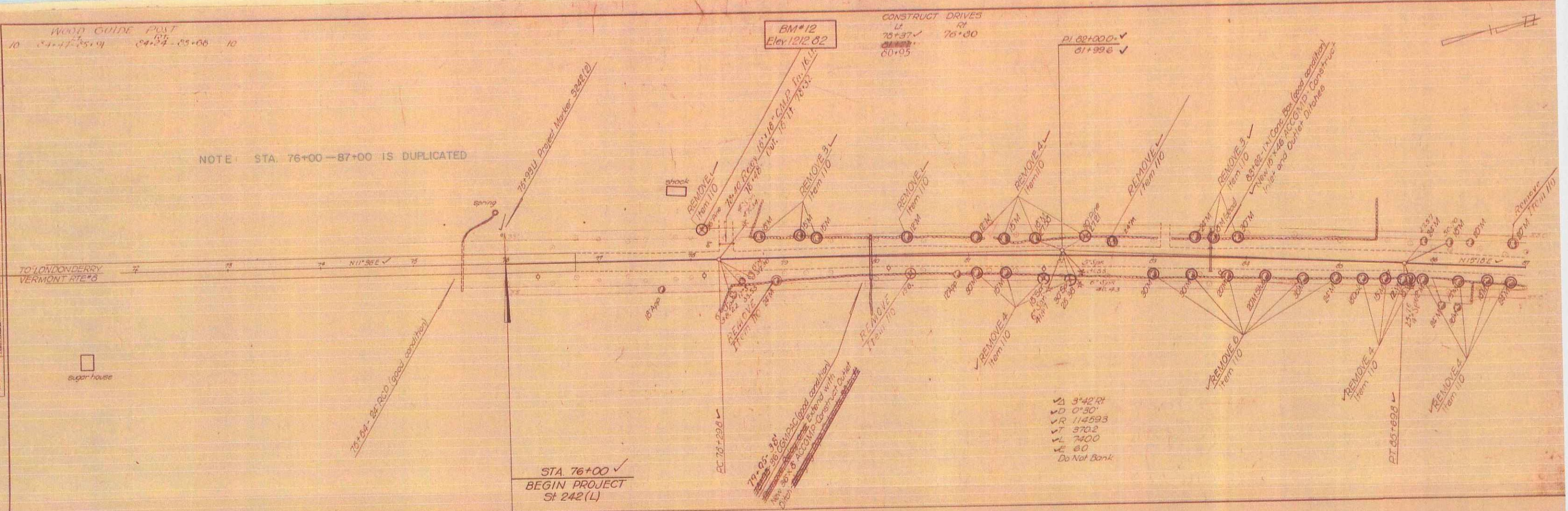


LONDONDERRY
PROJECT S 242 (R) 1982
SHEET 4 OF 5

WOOD GUIDE POST
 10 24-47-25.9 24-34-05.00 10

NOTE: STA 76+00-87+00 IS DUPLICATED

PLAN	DATE	BY	CHKD
1955	1955	W. J.
1956	1956
1957	1957
1958	1958
1959	1959
1960	1960
1961	1961
1962	1962
1963	1963
1964	1964
1965	1965



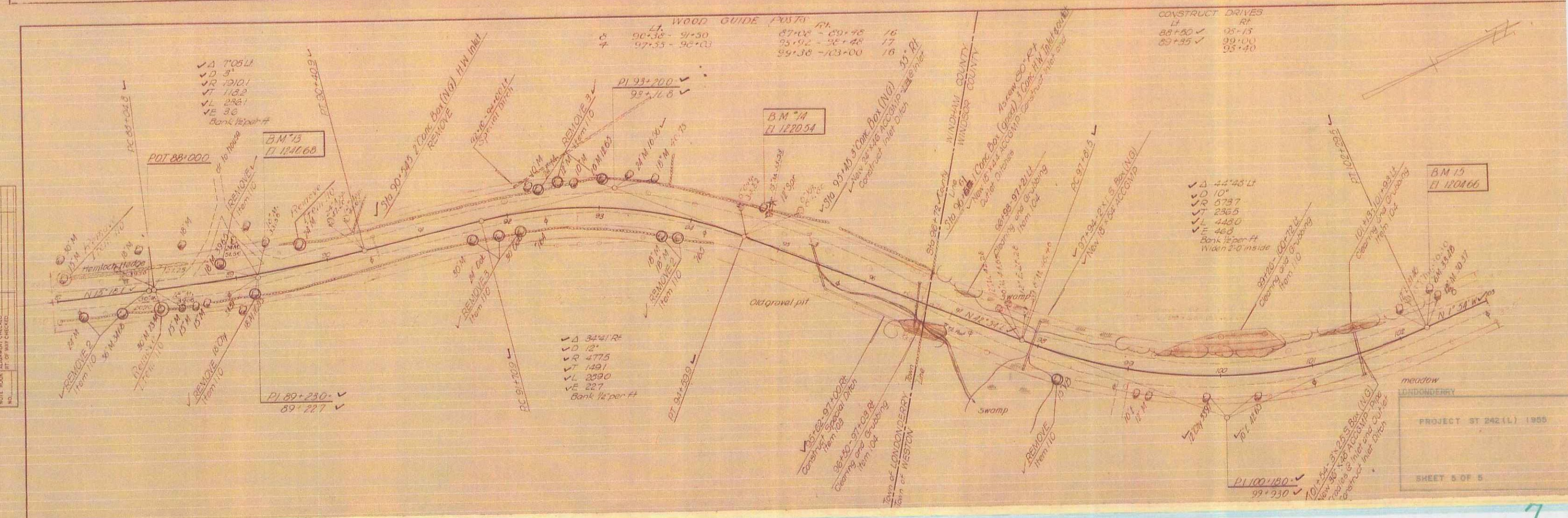
WOOD GUIDE POST

10	24-47-25.9	24-34-05.00	10
11	24-47-25.9	24-34-05.00	11
12	24-47-25.9	24-34-05.00	12
13	24-47-25.9	24-34-05.00	13
14	24-47-25.9	24-34-05.00	14
15	24-47-25.9	24-34-05.00	15
16	24-47-25.9	24-34-05.00	16
17	24-47-25.9	24-34-05.00	17
18	24-47-25.9	24-34-05.00	18

CONSTRUCT DRIVES

12	76+00	76+10
13	76+10	76+20
14	76+20	76+30
15	76+30	76+40
16	76+40	76+50
17	76+50	76+60
18	76+60	76+70
19	76+70	76+80
20	76+80	76+90

PLAN	DATE	BY	CHKD
1955	1955	W. J.
1956	1956
1957	1957
1958	1958
1959	1959
1960	1960
1961	1961
1962	1962
1963	1963
1964	1964
1965	1965



WOOD GUIDE POST

19	24-47-25.9	24-34-05.00	19
20	24-47-25.9	24-34-05.00	20
21	24-47-25.9	24-34-05.00	21
22	24-47-25.9	24-34-05.00	22
23	24-47-25.9	24-34-05.00	23
24	24-47-25.9	24-34-05.00	24
25	24-47-25.9	24-34-05.00	25
26	24-47-25.9	24-34-05.00	26
27	24-47-25.9	24-34-05.00	27
28	24-47-25.9	24-34-05.00	28
29	24-47-25.9	24-34-05.00	29

CONSTRUCT DRIVES

21	87+00	87+10
22	87+10	87+20
23	87+20	87+30
24	87+30	87+40
25	87+40	87+50
26	87+50	87+60
27	87+60	87+70
28	87+70	87+80
29	87+80	87+90
30	87+90	88+00

PROJECT ST 242 (L) 1965
 SHEET 5 OF 5