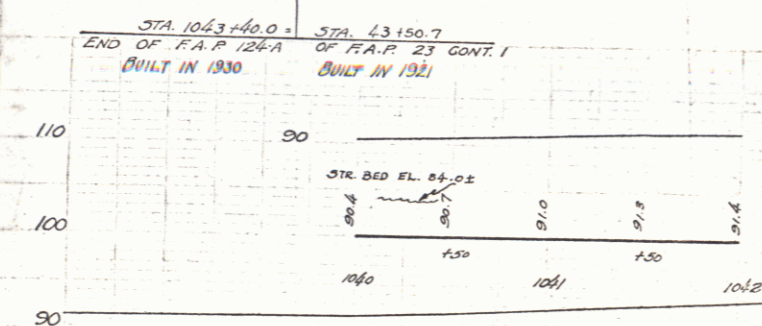
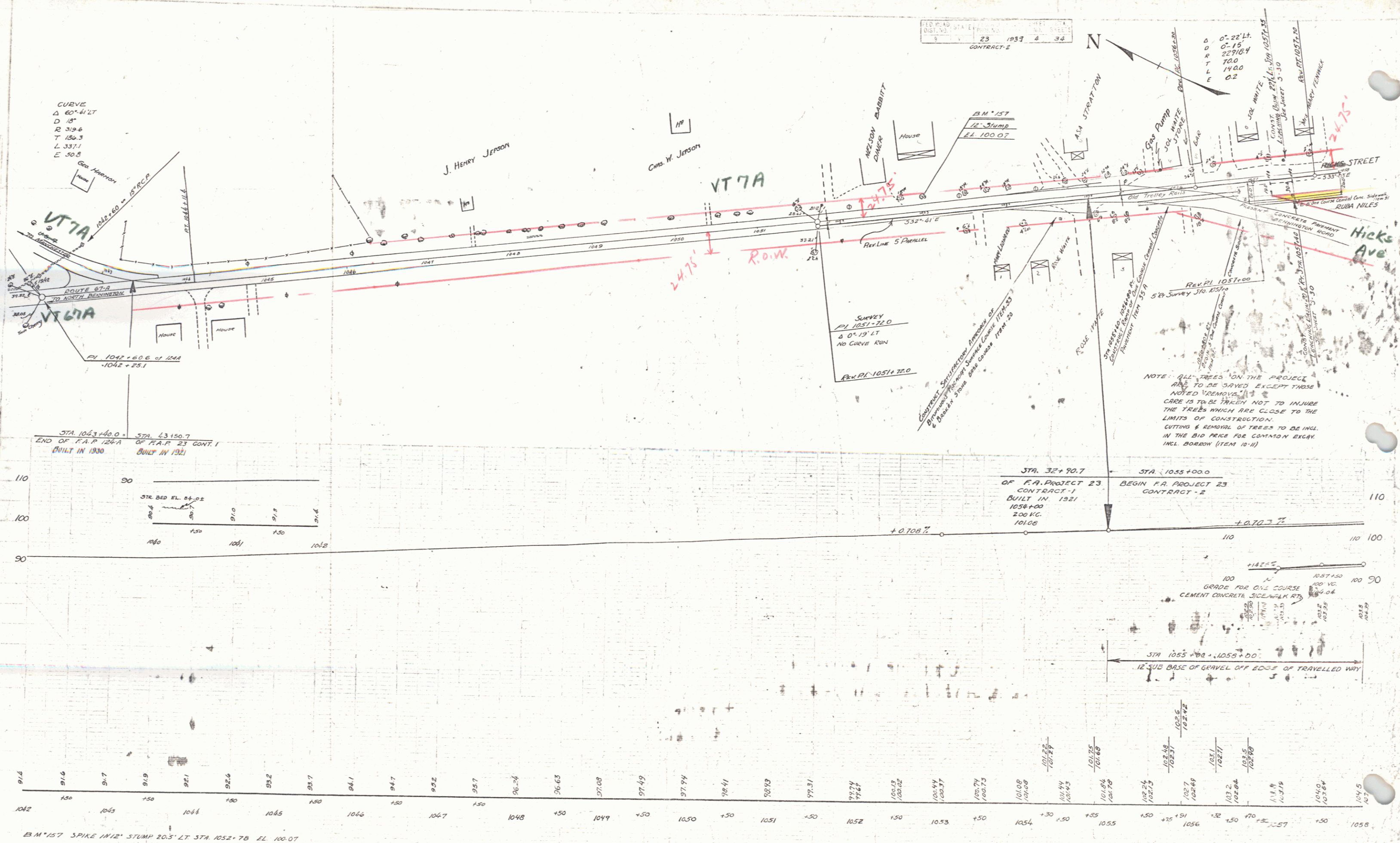


FED. ROAD DIST. NO. 23 1937 & 38
 CONTRACT - 2

CURVE
 Δ 60° 41' 21"
 D 18'
 R 319.6
 T 150.3
 L 337.1
 E 50.8



1057+00
 GRADE FOR CIVIL COURSE
 100 VC
 CEMENT CONCRETE SIDEWALK RT.
 STA 1055+00 - 1055+00
 12" SUB BASE OF GRAVEL OFF EDGE OF TRAVELLED WAY