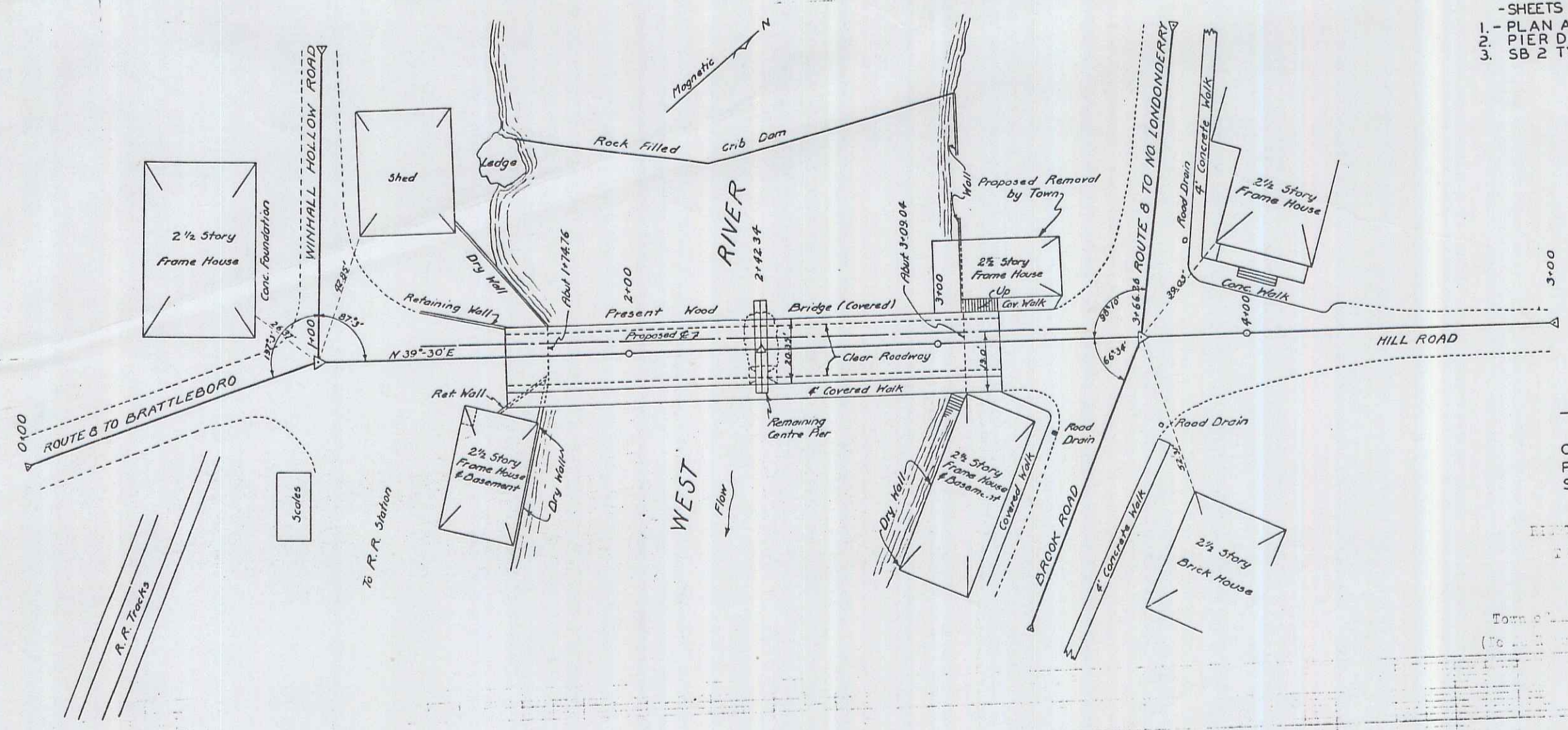


- SHEETS TO BE USED -
1. - PLAN AND PROFILE
 2. - PIER DETAILS
 3. - SB 2 TYPICAL DETAILS



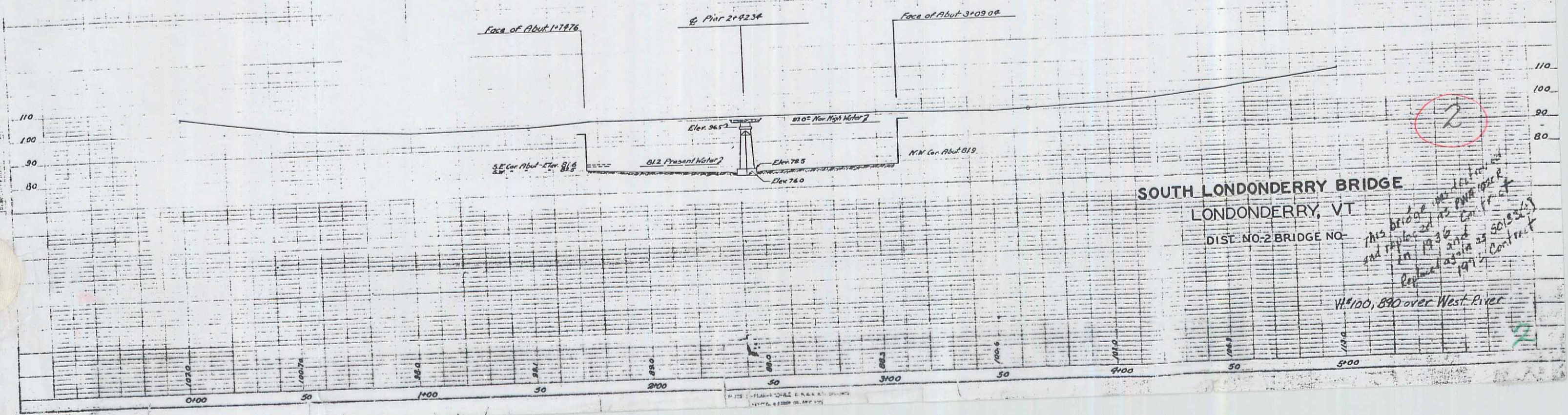
- ESTIMATED QUANTITIES -

CONCRETE - CLASS B	131 C.Y.
REIN. STEEL	221 LBS.
STRUCT. EXCAV.	20 C.Y.

VERTICAL CURVE
 TOWN OF LONDONDERRY
 DIST. NO. 2
 V+100

Corrected: *A. D. Bishop*
 Bridge Engineer

Approved: *H. E. Sargent*
 Chief Engineer



SOUTH LONDONDERRY BRIDGE
 LONDONDERRY, VT
 DIST. NO. 2 BRIDGE NO.

This bridge was built in 1930 and replaced in 1971. Contract

V+100, 890 over West River