

- SHEETS**
- PROFILE [INCLUDES TYPICAL SECTION - 3" BITUMINOUS CONCRETE PAVEMENT (MOD.)]
 DRAINAGE AND ITEM QUANTITY SHEET
 4 EARTHWORK SHEET
 5-6 RIGHT-OF-WAY DETAIL SHEETS
 7-8 ROADWAY PLAN SHEETS
 9 BRIDGE PLAN AND ELEVATION (BR 100)
 10 BRIDGE QUANTITY SHEET (BR 101)
 11-17 BRIDGE PLANS (BR 102-108)
 18-25 CHANNEL SECTIONS (BR 109-116)
 26-31 ROADWAY SECTIONS
- BRIDGE STANDARDS**
- 32-33 SR-RI-64 SHEETS 1 & 2, 4-28-70R
 34 SCB-DI-67 4-28-70R
 35 SCB-D2-67 (A)(B) 1-24-68
 36 SCB-D4-67 12-17-68R
 37 SCB-D6-67 (A)(B) 4-28-70R
 38 SCB-D8-67 (A)(B) 1-24-68
 39 SCB-D9-67 (A)(B) 12-11-70R
- ROADWAY STANDARDS**
- 40 B-1 BANKING TABLES 7-17-67R
 41 B-5 TYPICAL SLOPE GRADING 3-10-65
 42 B-10 EMBANKMENT ON A SLOPE 3-10-65
 43 C-1 TREATED TIMBER CURB 9-10-69R
 44 D-2 C.R.M. HEADWALLS 3-3-71
 45 D-6 R.C. DROP INLET W/GRATE, FOR DITCHES 12-23-66
 46 D-8 R.C. DROP INLET W/GRATE (BOTTOM SECTION) 3-10-65
 47 D-10 TOP FOR DROP INLET 3-10-65
 48 D-11 CAST IRON GRATE TYPE "A" 12-2-69R
 49 D-16 CAST IRON GRATE TYPE "B" 10-28-69R
 50 E-31 FA CONSTRUCTION IDENTIFICATION SIGNS 2-17-71
 51 E-33 BRIDGE CONSTRUCTION APPROACH SIGNS 5-6-71R
 52 G-10 STD. STEEL BEAM GUARD RAIL WITH STEEL POSTS, & ANCHORS 9-1-66R (FOR REFER. TO RESETTING)
 53 G-3 THREE CABLE GUARD RAIL WITH STEEL POSTS, & ANCHORS 9-1-66R (FOR REFER. TO RESETTING)
 54 G-30 DEAD END ANCHORAGE AT BRIDGE APPROACH 2-8-66R
 55 G-10 END TRANSITION OF STD. STEEL BEAM GUARD RAIL TO BRIDGE RAILING 4-29-70R
 56 J-1 PROJECT MARKERS AND BOUNDARY MARKERS 3-10-65

STATE OF VERMONT
 DEPARTMENT OF HIGHWAYS
 FEDERAL AID SECONDARY PROJECT

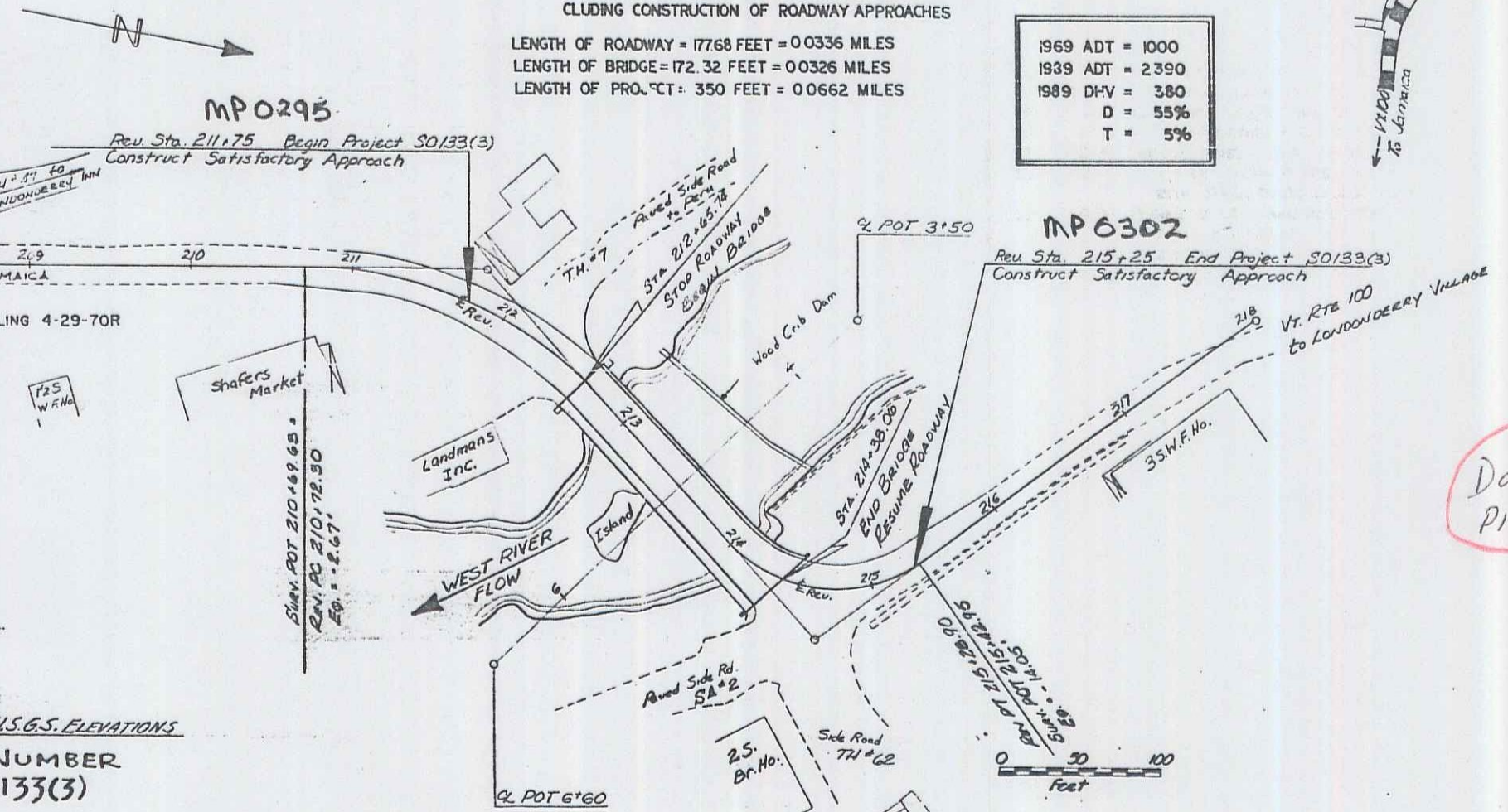
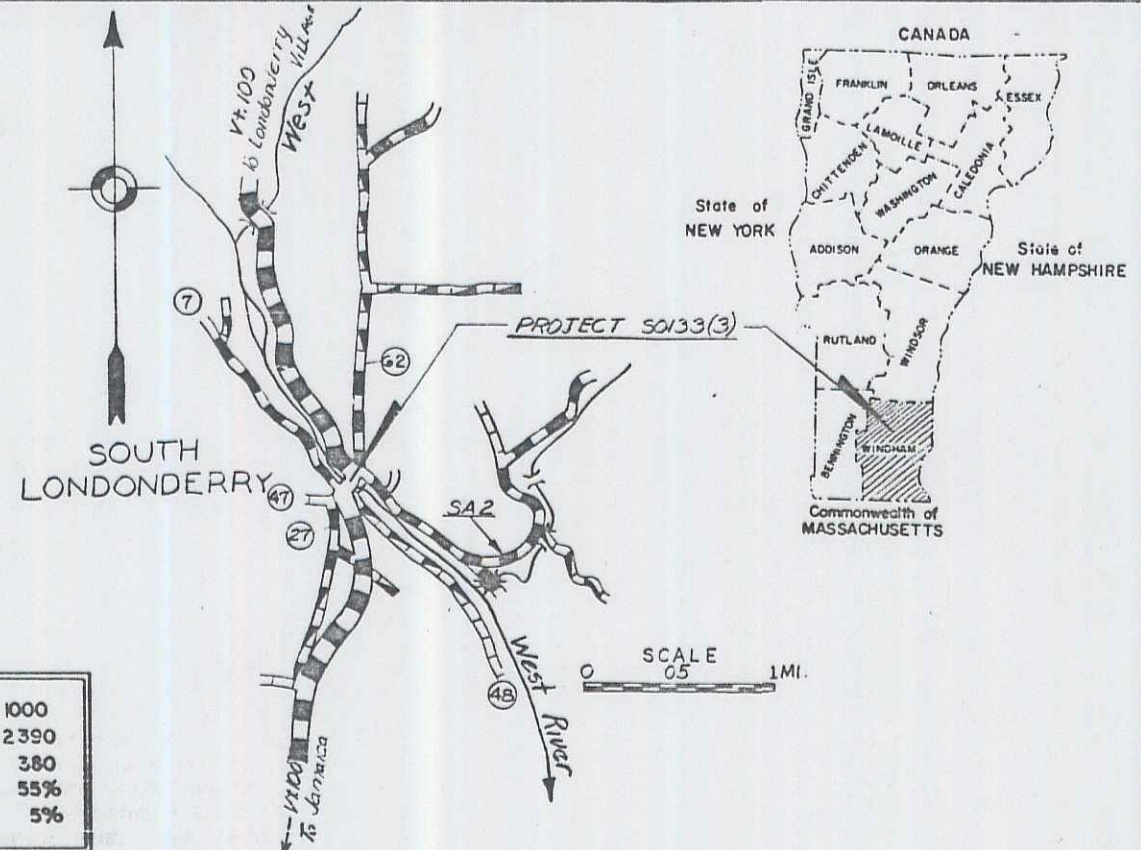


PROPOSED IMPROVEMENT
 TOWN OF LONDONDERRY
 COUNTY OF WINDHAM
 VERMONT RTE 100

REPAIR AND WIDEN EXISTING EMERY MELENDY BRIDGE IN THE VILLAGE OF SOUTH LONDONDERRY INCLUDING CONSTRUCTION OF ROADWAY APPROACHES

LENGTH OF ROADWAY = 17768 FEET = 0.0336 MILES
 LENGTH OF BRIDGE = 172.32 FEET = 0.0326 MILES
 LENGTH OF PROJECT = 350 FEET = 0.0662 MILES

1969 ADT = 1000
1969 ADT = 2390
1969 D.V. = 380
D = 55%
T = 5%



PROJECT	LONDONDERRY
NUMBER	SO133(3)
TYPE	2 SPAN SIMPLE WF, NEW CONC. DECK
CONTRACTOR	TUCKER CONSTRUCTION
YEAR	1972
LOCATION	IN THE TOWN OF LONDONDERRY ON VT. RTE 100 IN THE VILLAGE OF SOUTH LONDONDERRY

- CONVENTIONAL SIGNS**
- COUNTY LINE
 - TOWN LINE
 - LIMITS OF ACCESS
 - POINT OF ACCESS
 - FENCE LINE
 - STONE WALL
 - TRAVELED WAY
 - GUARD RAIL
 - RAILROAD
 - SURVEY LINE
 - CULVERT
 - POWER POLE
 - TELEPHONE POLE
 - TREES
 - F.A. CONST. IDENTIFICATION SIGNS
 - PROPERTY LINE
 - R.O.W. TAKING LINE
 - SLOPE RIGHTS
 - TOP OF CUT
 - TOE OF SLOPE

BENCH MARK DATA BASED ON U.S.G.S. ELEVATIONS

PROJECT NAME & NUMBER
 LONDONDERRY SO133(3)

RECORD PLANS

MATERIALS

TAR EMULSION FOR BRIDGE FLOORS
 WIPSY EQUIPMENT
 BITUMINOUS CONCRETE
 VERMONT PAVING CORP.
 CONCRETE (CLASS AA & B)
 CHARLESTOWN READY MIX
 REINFORCING STEEL
 K-ROSS BLDG. SUPPLY CENTER
 STRUCTURAL STEEL
 BANCROFT & MARTIN
 GRANITE BRIDGE CURB
 BARRETT GRANITE CORP.

CONTRACTOR TUCKER CONST. CONTRACT DATED JUNE 21, 1971
 RESIDENT ENGINEER A. REINHART STARTED JULY 12, 1971
 RECORD PLANS R.L. WEICHERT CHECKED JULY 14, 1972

Date 125/18/1970
 P.I.N. 802800

REMOVED BY DIVISION
 TOWN OF LONDONDERRY
 Town of Vt 100
 (To Be Returned to State, if not used)
 Tn. of Londonderry

These plans are subject to such revisions as may be required by the Federal Highway Administration or the Chief Engineer.
 Construction is to be carried on in accordance with these plans and the Standard Specifications for Highway and Bridge Construction dated April 1964, as approved by the Bureau of Public Roads on October 12, 1964, including all subsequent approved revisions and such revised specifications and special provisions as are incorporated in these plans.
 For right-of-way details, see the right-of-way plans for this project.

NOTE: ANY FURTHER INFORMATION CONCERNING FINAL QUANTITIES, AMOUNTS OR OTHER DETAILS RELATIVE TO THIS PROJECT MAY BE FOUND IN EITHER THE BLUE BOOKS OR THE ESTIMATE FILE.

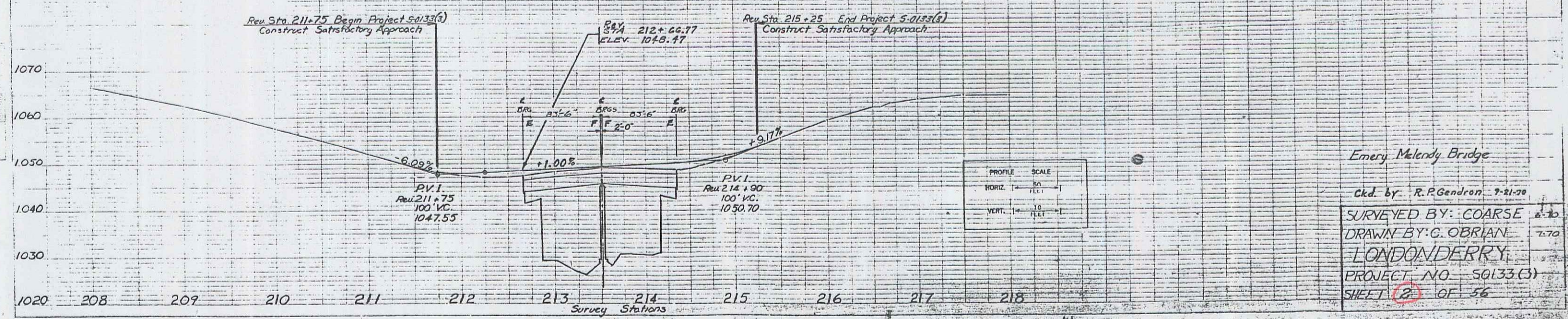
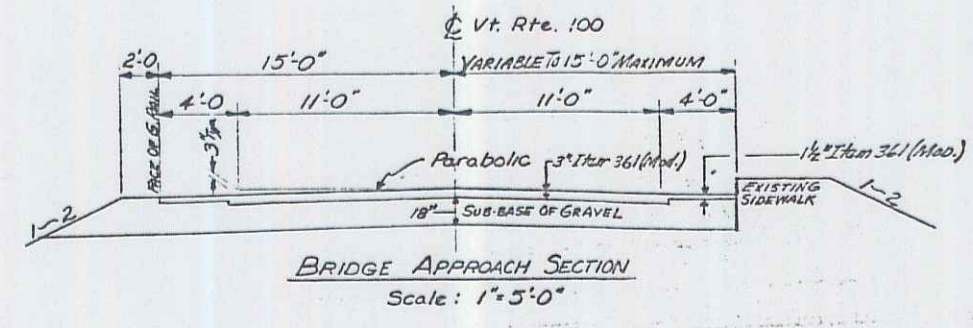
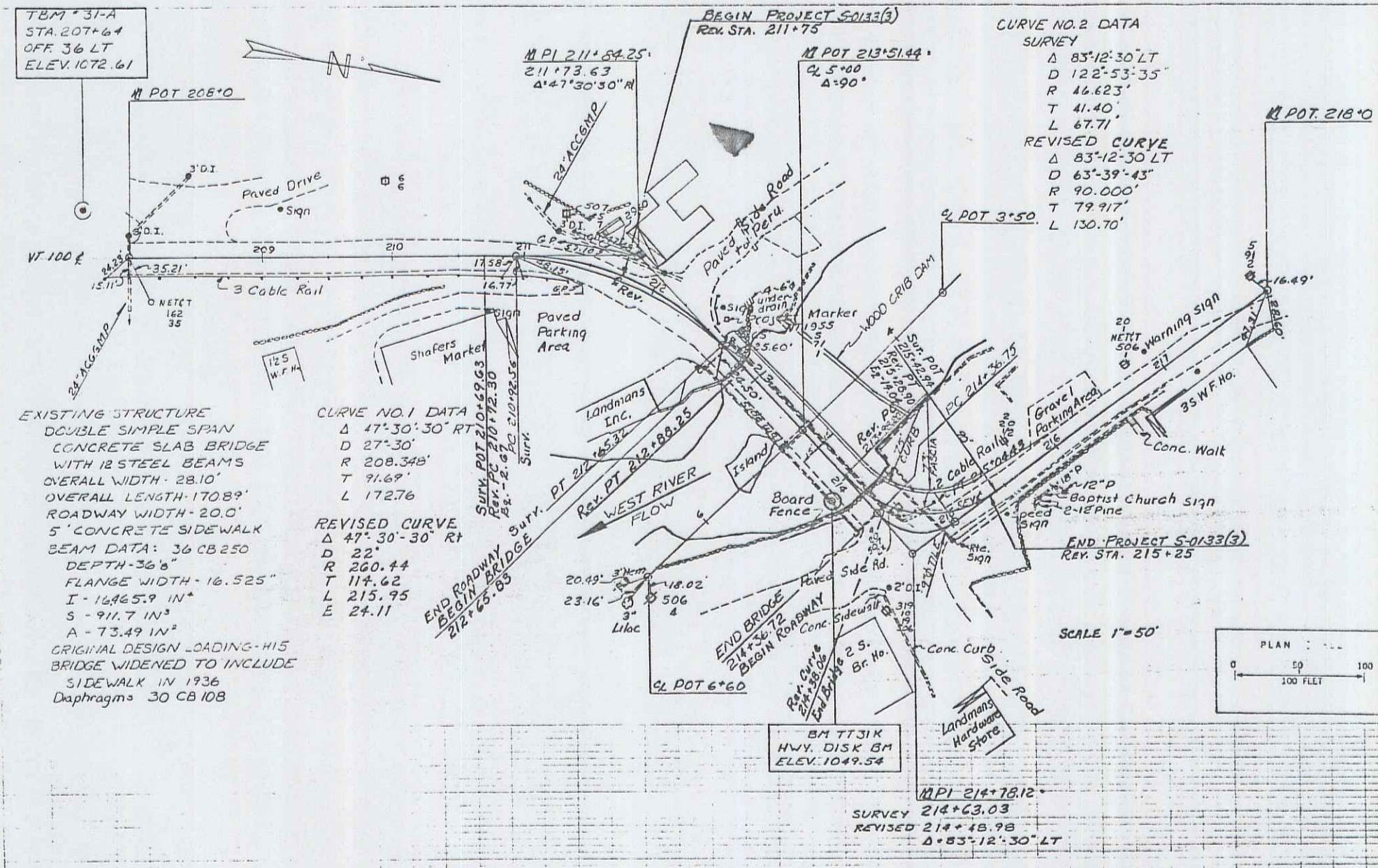
SUBMITTED BY ORDER OF THE STATE HIGHWAY BOARD

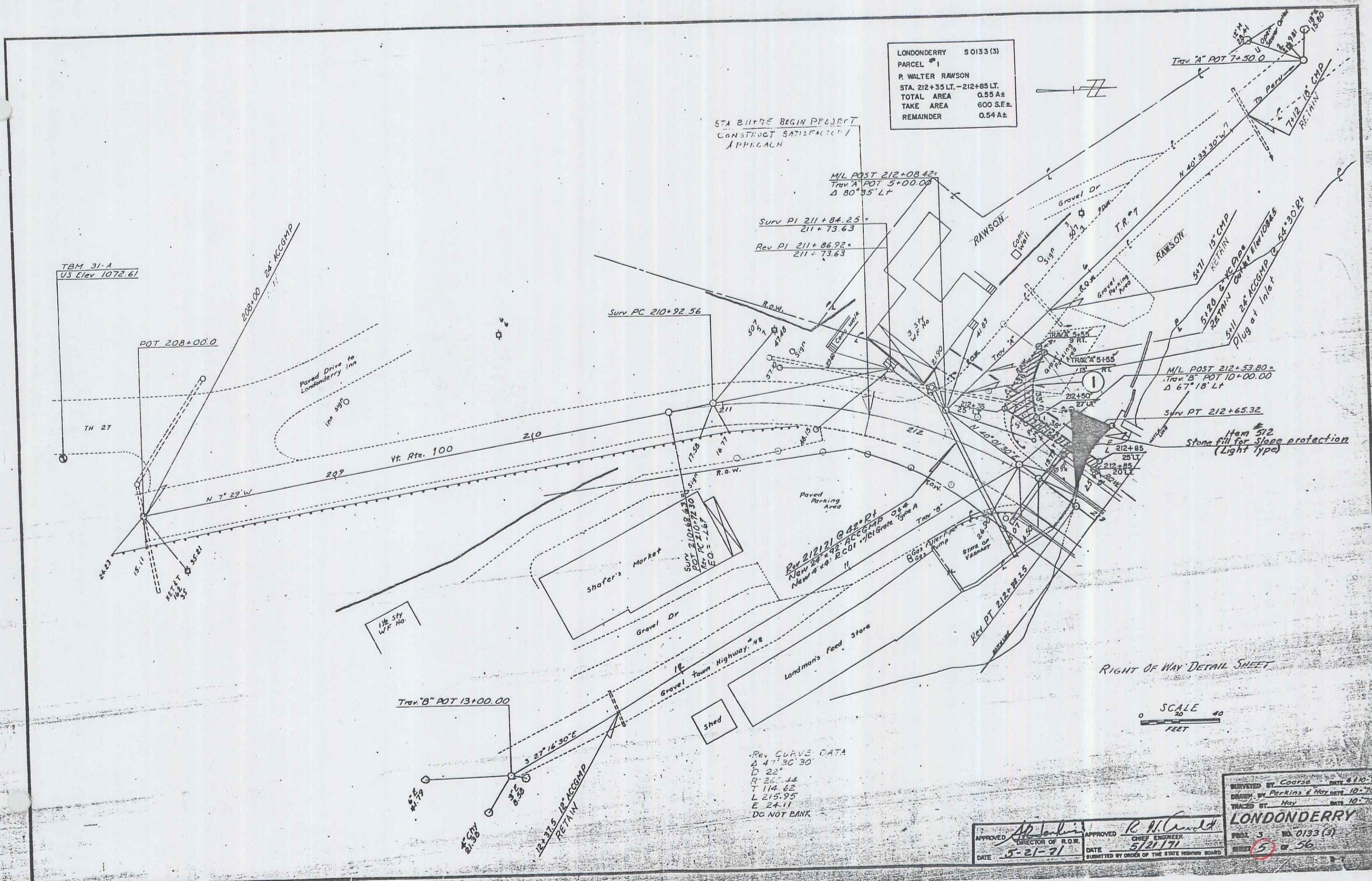
APPROVED: [Signature] DATE May 18, 1972
 CHIEF ENGINEER

DEPARTMENT OF TRANSPORTATION
 FEDERAL HIGHWAY ADMINISTRATION

APPROVED: [Signature] DATE
 DIVISION ENGINEER

LONDONDERRY
 PROJECT 5 - NO. 0133(3)
 SHEET 1 OF 34 SHEETS





LONDONDERRY S 0133 (3)
 PARCEL #1
 P. WALTER RAWSON
 STA. 212+35 LT. - 212+85 LT.
 TOTAL AREA 0.55 A±
 TAKE AREA 600 S.E.±
 REMAINDER 0.54 A±

STA 211+75 BEGIN PROJECT
 CONSTRUCT SATISFACTORY
 APPROACH

M/L POST 212+08.42
 Trav. A POT 5+00.00
 Δ 80°35' LT

Surv PI 211+84.25
 211+73.63
 Rev PI 211+86.92
 211+73.63

Surv PC 210+92.56

M/L POST 212+53.80
 Trav. B POT 10+00.00
 Δ 67°18' LT

Surv PT 212+65.32

Item #512
 Stone fill for slope protection
 (Light type)

Rev CURVE DATA
 Δ 4°30'30"
 D 22'
 R 25.14
 T 114.62
 L 215.95
 E 24.11
 DO NOT BANK

RIGHT OF WAY DETAIL SHEET

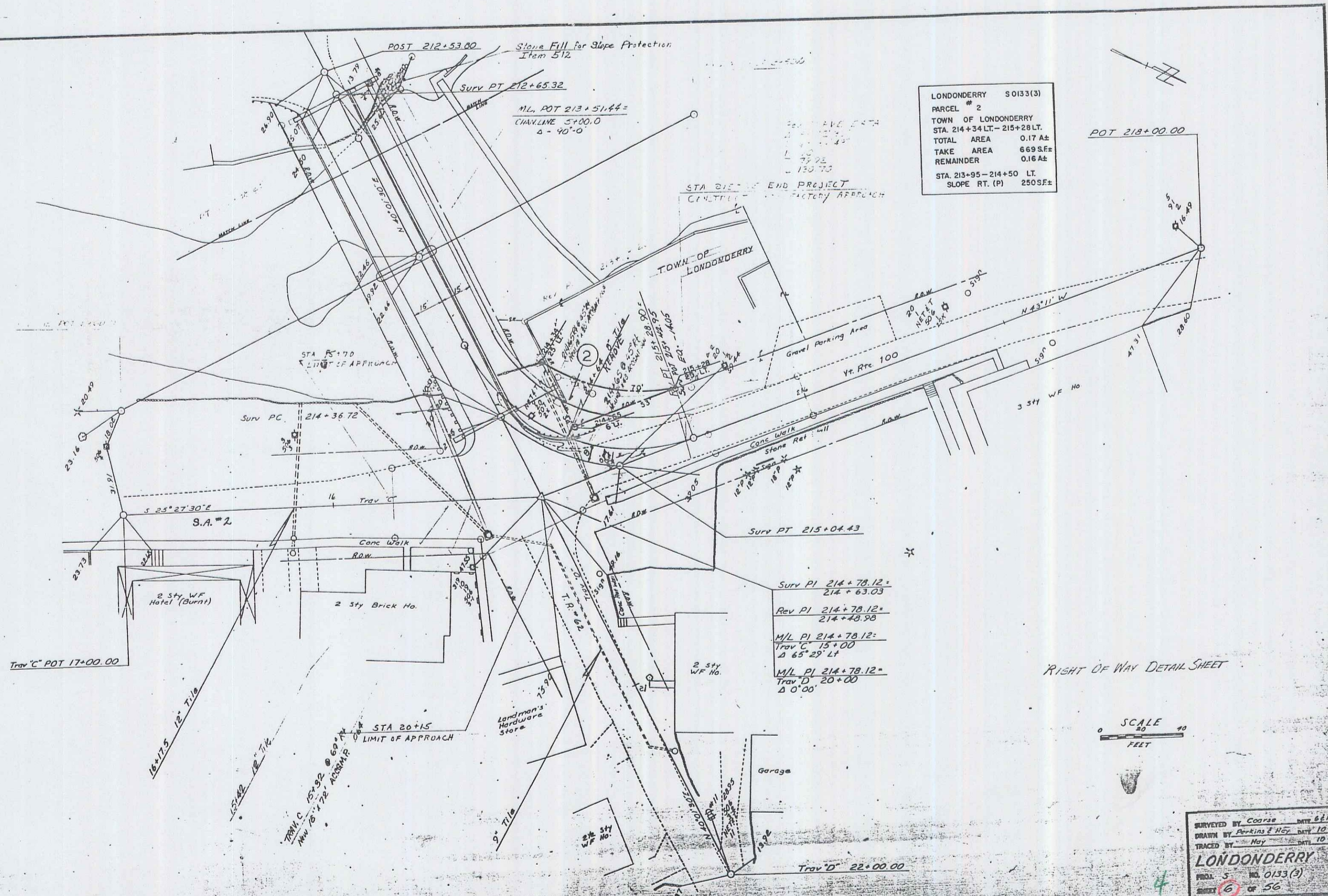
SCALE
 0 20 40
 FEET

APPROVED *R. W. Arnold*
 DIRECTOR OF HIGHWAYS
 DATE 5-21-71

APPROVED *R. W. Arnold*
 CHIEF ENGINEER
 DATE 5/21/71

SUBMITTED BY ORDER OF THE STATE HIGHWAY BOARD

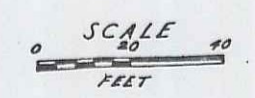
SURVEYED BY Course DATE 8-11-70
 DRAWN BY Perkins & May DATE 10-70
 CHECKED BY Hay DATE 10-70
LONDONDERRY
 PLAN 5 NO. 0133 (3)
 SHEET 5 OF 56



LONDONDERRY	S0133(3)
PARCEL #	2
TOWN OF LONDONDERRY	
STA. 214+34 LT. - 215+28 LT.	
TOTAL AREA	0.17 A±
TAKE AREA	669 S.F.±
REMAINDER	0.16 A±
STA. 213+95 - 214+50 LT.	
SLOPE RT. (P)	250 S.F.±

SURV PI 214+78.12 =
 214+63.03
 REV PI 214+78.12 =
 214+48.98
 M/L PI 214+78.12 =
 Trav C 15+00
 Δ 65°29'44"
 M/L PI 214+78.12 =
 Trav D 20+00
 Δ 0°00'

RIGHT OF WAY DETAIL SHEET



SURVEYED BY: Coorse DATE: 6-10-70
 DRAWN BY: Perkins & Hoy DATE: 10-70
 TRACED BY: Hoy DATE: 10-70
LONDONDERRY
 PROJ. 5 NO. 0133(3)
 SHEET 6 OF 56