

INDEX OF SHEETS

SHEET NO.	TITLE PAGE
1	TITLE PAGE
2	TYPICAL CROSS-SECTION OF IMPROVEMENT (24' GRAVEL)
3	PLAN AND PROFILE STA. 0+00 TO STA. 3+50
4	SUPERSTRUCTURE DETAILS SB 20-75' SKEW 33°-41'
5	S.B. 1 TYPICAL DETAILS FOR STEEL BRIDGES
6-8	ABUTMENT DETAILS
9-10	CROSS SECTIONS
11	STANDARD STRUCTURES S-19

STATE OF VERMONT
STATE HIGHWAY DEPARTMENT

PLAN AND PROFILE OF PROPOSED
STATE HIGHWAY
FEDERAL AID PROJECT

TOWN OF HYDE PARK

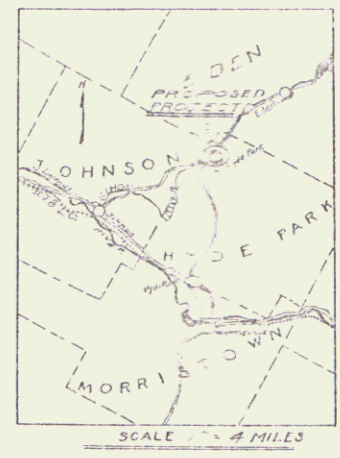
JOHNSON - NEWPORT ROAD

BRIDGE OVER THE GIHON RIVER

LOCATED 0.5 MILES SOUTH OF NORTH HYDE PARK

LENGTH 350.0 FEET = 0.066 MILES

DATE	BY	REVISION
5-25-1928	W.C.	19-C



SCALES
PLAN 1" = 20 FEET
VERT. 1" = 20 FEET
HORIZ. 1" = 20 FEET
SECTIONS 1" = 5 FEET

LAYOUT
SEE SHEETS 3 & C

RIGHT-OF-WAY DIVISION
TOWN FILE

PERPETUAL
Rtc. #100 C
(To Be Returned To R.O.W. Division)
MP 0.084-0.017

APPROVED: May 25, 1928
W.C. Sargent
CHIEF ENGINEER
SUBMITTED BY ORDER OF THE STATE HIGHWAY BOARD
W.C. Sargent
COMMISSIONER OF HIGHWAYS

CONVENTIONAL SIGNS

COUNTY LINE	GROUND ELEVATION
TOWN LINE	GRADE ELEVATION
FENCE LINE	
STONE WALL	
UNFENCED PROPERTY	
GUARD RAIL	
TRAVELED WAY	
RAILROAD	
RETAINING WALL	
CENTER LINE	
SURVEY LINE	
CULVERT	
DROP INLET	
TROLLEY POLE	
POWER POLE	
TELEPHONE POLE	
TREES	
HEDGE	

CURVE DATA

DEFLECTION ANGLE	Δ
DEGREE OF CURVE	D
RADIUS OF CURVE	R
TANGENT DISTANCE	T
LENGTH OF CURVE	L
EXTERNAL DISTANCE	E
POINT OF INTERSECTION	P. I.
POINT OF CURVE	P. C.
POINT OF TANGENT	P. T.
POINT ON TANGENT	P. O. T.

THIS PROJECT TO BE CONSTRUCTED IN ACCORDANCE WITH
STANDARD SPECIFICATIONS ON FILE WITH THE U.S.
BUREAU OF PUBLIC ROADS

STRUCTURES ON THIS PROJECT TO BE CONSTRUCTED IN
ACCORDANCE WITH DETAILS GIVEN ON STANDARD
STRUCTURE SHEETS SERIES NOS. 517-18-19

DISTRICT No 8
BRIDGE No 47
HYDE PARK

RECOMMENDED FOR APPROVAL
BUREAU OF PUBLIC ROADS
CHIEF ENGINEER

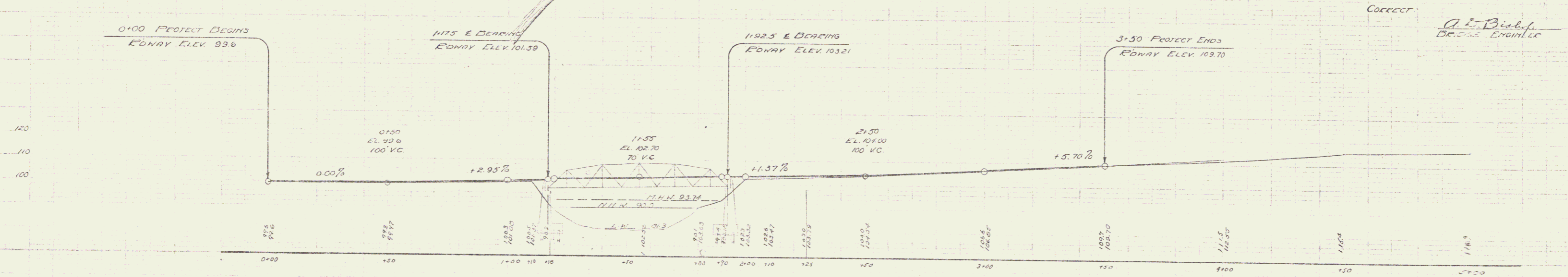
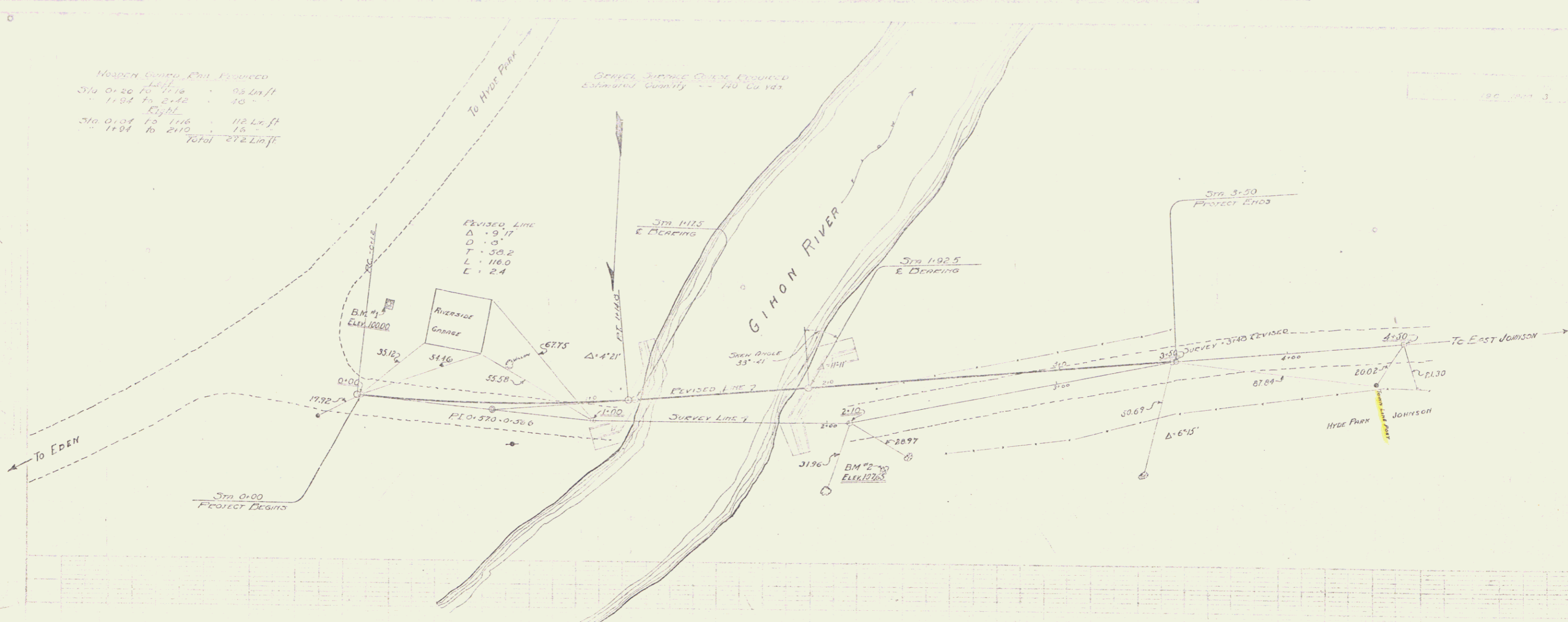
P.in # 002756
Route VT100C
Date 5/25/1928

SERIES F. NO. 1194
SHEET 1 OF 11
FILED 5-25-28

Dist. #8 Plans

Wooden Girder Rail Bridge
 Sta 0+26 to 1+16 = 90 Lin ft
 1+34 to 2+42 = 108
 Right
 Sta 0+04 to 1+16 = 112 Lin ft
 1+34 to 2+10 = 76
 Total 272 Lin ft

GENERAL JACKING QUANT. REQUIRED
 Estimated Quantity = 140 Cu Yds



B.M. #1 THE CORNER CONC. BASE OF GAS PUMP FRONT OF RIVERSIDE GARAGE EL. 100.00
 B.M. #2 STAKE IN TOP OF JURY LINE 100' FROM STA 2+10 (BETWEEN TREES
 USED FOR TIES TO STA 2+10) EL. 107.65

FOUNDATION MATERIAL: CLAY, GRAVEL, BOULDERS

Correct
 A. E. Bishop
 BE. CIVIL ENGINEER

DISTRICT No. 8
 ~ BRIDGE No. 47-53 ~
 HYDE PARK, VT.
 Scale: 1" = 20'
 1" = 40'
 SERIES F 119-C FILED 0-47-53
 Sheet 3 of 11 Sheets