

INDEX OF SHEETS

SHEET NO. 1	TITLE PAGE
2	TYPICAL CROSS-SECTION OF IMPROVEMENT
3	QUANTITY SHEET (ITEMS AND DRAINAGE)
4	EARTHWORK SHEET
5-6	PLAN AND PROFILE SHEETS
7	DETAILS OF 15'-0" CORR. GALV. METAL PLATE PIPE
8	ROADWAY STANDARD SHEET RS 56-1 (BANKING TABLES)
9	ROADWAY STANDARD SHEET RS 56-3 (PLANK GUARD RAIL, STEEL GUIDE POSTS, PROJECT MARKERS AND BOUNDARY MARKERS)
10	ROADWAY STANDARD SHEET RS 56-4 (CEMENT RUBBLE MASONRY & P.A.C.C.G.M. UNDERDRAIN)
11	ROADWAY STANDARD SHEET RS 56-6 (SLOPE GRADING)
12	ROADWAY STANDARD SHEET RS 56-9 (DRILLING AND BLASTING)
13	ROADWAY STANDARD SHEET RS 56-11 (THREE CABLE GUARD RAIL WITH STEEL POSTS)
14	ROADWAY STANDARD SHEET RS 56-12 (BARRICADES, SIGNS AND LIGHTS)
15-22	CROSS SECTIONS
23-25	CHANNEL SECTIONS

STATE OF VERMONT
DEPARTMENT OF HIGHWAYS
PROPOSED IMPROVEMENT

TOWN OF JOHNSON
COUNTY OF LAMOILLE
VERMONT ROUTE 100 C
JOHNSON-NO. HYDE PARK ROAD

BEGINNING AT A POINT 2682.3' WEST OF JOHNSON-HYDE PARK TOWN LINE AND EXTENDING EAST 1247.8'

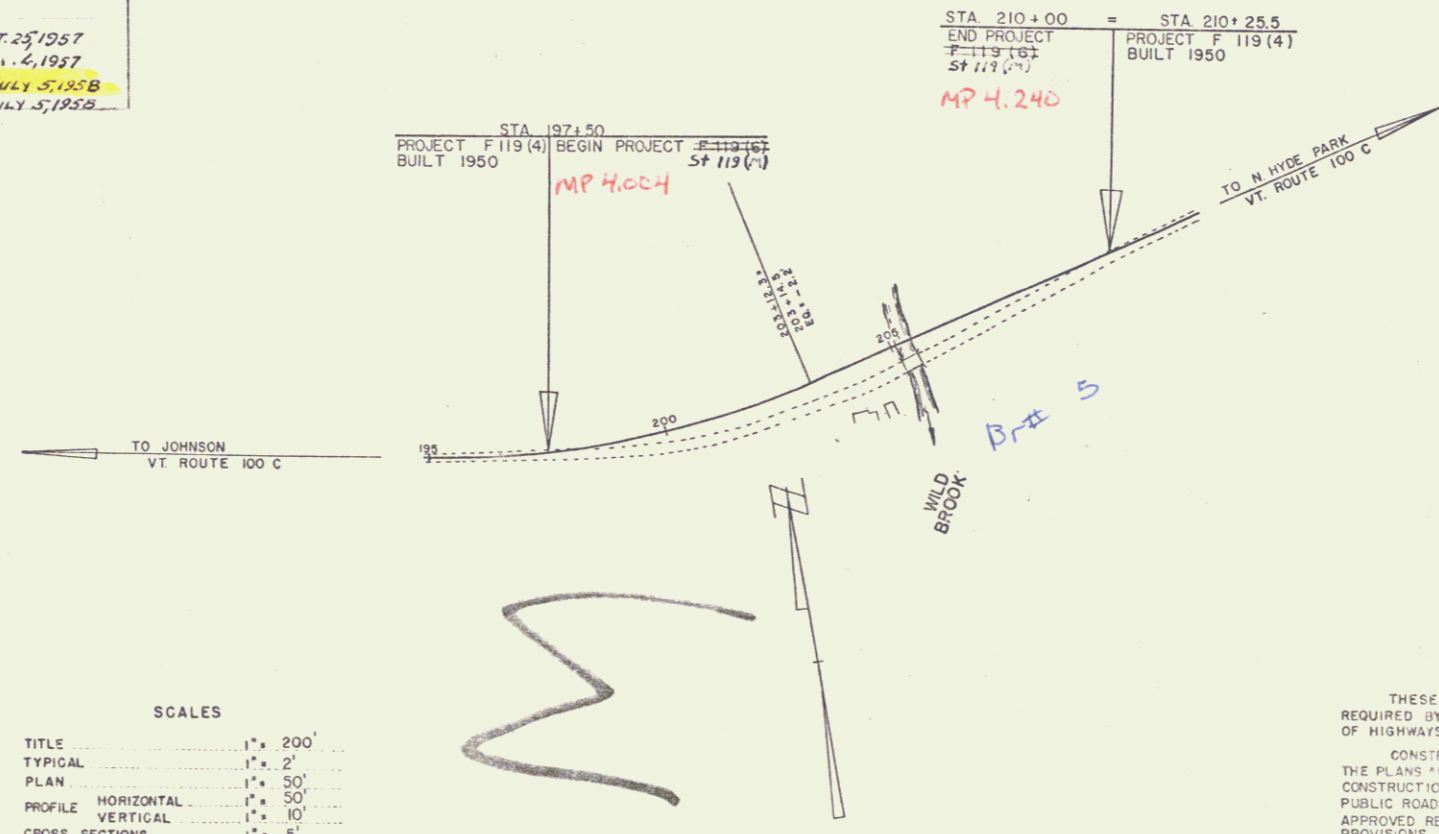
LENGTH OF ROADWAY 1247.8 FEET = .236 MILES
LENGTH OF PROJECT 1247.8 FEET = .236 MILES

ADT 1955 + 600
ADT 1975 + 900
D.V. 135
D.T. 50%
D.T. 4%

PROJECT NAME & NUMBER	TYPE
JOHNSON ST. 119 (M)	DOUBLE TRACK COAT OF BIT. M. TRAILS W/ PRETREATED PER STONE BARK.
RECORD PLANS	
MATERIALS	
GRAVEL - HOWARD PIT CRUSHED GRAVEL - HOWARD PIT PEASTONE - WAREHO PLANT RIP-RAP - DEMERS PLANT GUIDE RAIL & GUIDE POSTS	METAL PLATE PIPE - N. ENG. MET. METAL CULVERTS - N. ENG. METAL CONCRETE CULVERTS - VT. CONG. PIPE CORR. - PIPE CORR. CO. AMERICAN ST. WIRE CO.
CONTRACTOR - M.C. BUCK C.S. ENGR - WALTER W. REDMOND RECORD PLANS - E.C. GLYSSON	CONTRACT DATED - OCT. 25, 1957 CONTRACT STARTED - NOV. 4, 1957 CONTRACT COMPLETED - JULY 5, 1958 CONTRACT ACCETED - JULY 5, 1958

PROJECT NO. 404
LENGTH 2.236 MI.
NUMBER 5 119 (M)
TYPE 20 ft. Tack Coat of Bit. Materials with
15 ft. 2" Rip-Rap Stone
CONTRACTOR M.C. Buck
LOCATION Johnson, N.H.
Remarks: Highway at road, stable, west of
Hyde Park Town Line, and extend to
Hyde Park.

GROUND ELEVATION	DATUM	LINE
GRADE ELEVATION	DATUM	LINE
CURVE DATA		
DEFLECTION OF ANGLE	A
DEGREE OF CURVE	D
RADIUS OF CURVE	R
TANGENT DISTANCE	T
LENGTH OF CURVE	L
EXTERNAL DISTANCE	E
POINT OF INTERSECTION	P.I.
POINT OF CURVE	P.C.
POINT OF TANGENT	P.T.
POINT ON TANGENT	P.O.T.
POINT ON SUB-TANGENT	POST



SCALES

TITLE	1" = 200'
TYPICAL	1" = 2'
PLAN	1" = 50'
HORIZONTAL	1" = 50'
PROFILE	1" = 10'
VERTICAL	1" = 10'
CROSS-SECTIONS	1" = 5'

THESE PLANS ARE SUBJECT TO SUCH REVISIONS AS MAY BE REQUIRED BY THE BUREAU OF PUBLIC ROADS OR THE COMMISSIONER OF HIGHWAYS.

CONSTRUCTION IS TO BE CARRIED ON IN ACCORDANCE WITH THE PLANS AND THE STANDARD SPECIFICATIONS FOR HIGHWAY AND BRIDGE CONSTRUCTION OF JANUARY 1956 SUBMITTED TO THE BUREAU OF PUBLIC ROADS AS APPROVED JULY 5, 1956 INCLUDING ALL SUBSEQUENT APPROVED REVISIONS AND SUCH REVISED SPECIFICATIONS AND SPECIAL PROVISIONS AS ARE SUBMITTED WITH THE PLANS.

APPROVED	APPROVED	APPROVED	APPROVED	APPROVED	APPROVED
SECONDARY ENGINEER	ENGINEER IN CHARGE	BRIDGE ENGINEER	APPROVED	APPROVED	APPROVED
DATE	DATE	DATE	DATE	DATE	DATE
	Sept. 27, 1957	Sept. 27, 1957	Sept. 27, 1957	Sept. 27, 1957	Sept. 27, 1957

NOTES: ALL FURTHER INFORMATION CONCERNING FINAL QUANTITIES, DISTANCES AND OTHER DETAILS RELATIVE TO THIS PROJECT MAY BE FOUND IN EITHER THE FIELD BOOKS OR THE FINAL SITE FILE.

DEPARTMENT OF COMMERCE
BUREAU OF PUBLIC ROADS

APPROVED	FILED
PROJECT	NO. 404
NO.	119 (M)
SHEET	1 OF 25

INDEX OF SHEETS

STATE OF VERMONT
DEPARTMENT OF HIGHWAYS
PROPOSED IMPROVEMENT

TOWN OF JOHNSON
COUNTY OF LAMOILLE
VERMONT ROUTE 100 C
JOHNSON-NO. HYDE PARK ROAD

BEGINNING AT A POINT 2682.3' WEST OF JOHNSON-HYDE PARK TOWN LINE AND EXTENDING EAST 1247.8'

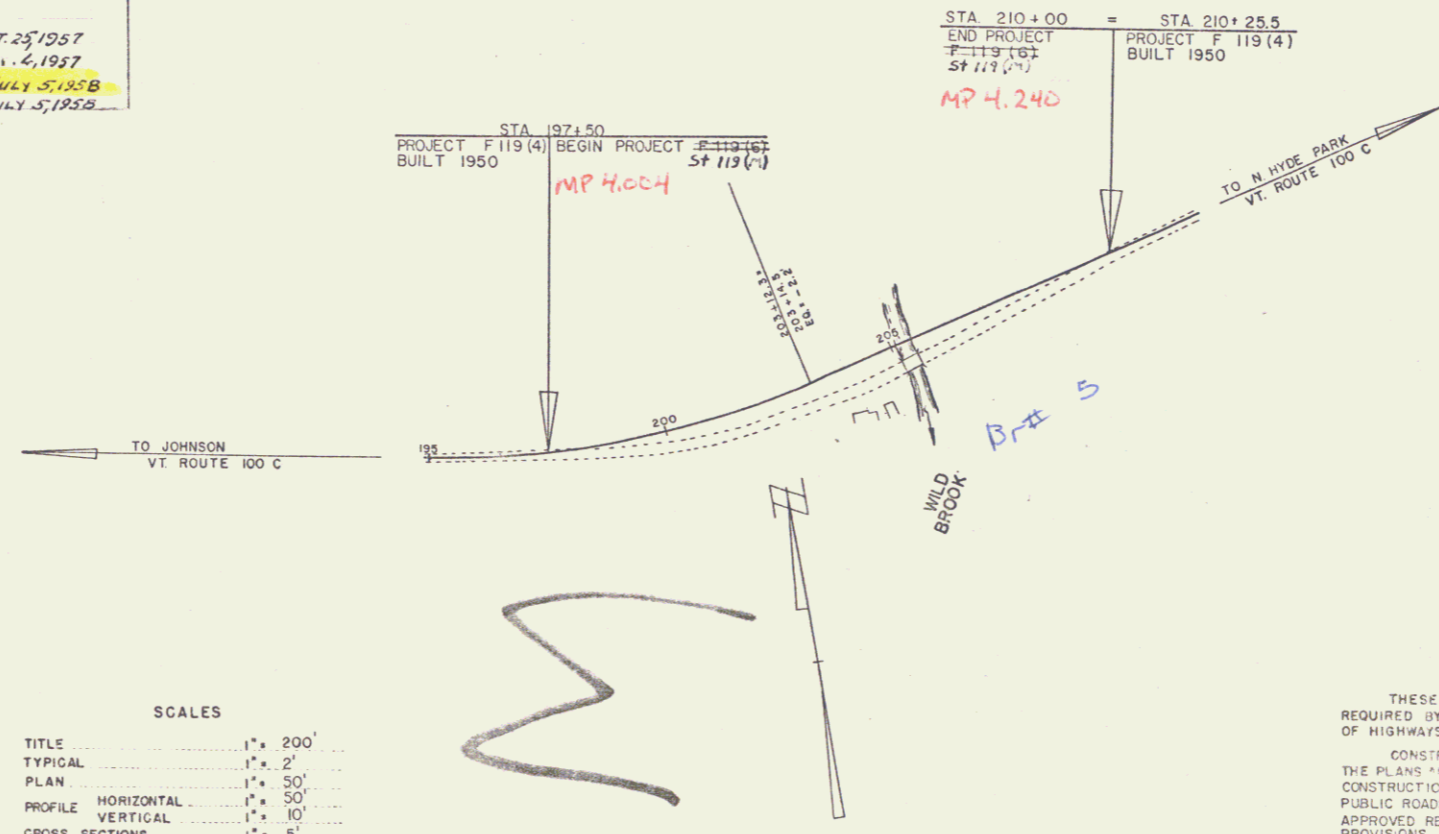
LENGTH OF ROADWAY 1247.8 FEET = .236 MILES
LENGTH OF PROJECT 1247.8 FEET = .236 MILES

ADT 1955 + 600
ADT 1975 + 900
D.V. 135
D.T. 50%
D.T. 4%

PROJECT NAME & NUMBER	TYPE
JOHNSON ST. 119 (M)	DOUBLE TRACK COAT OF BIT. M. TRAILS W/ PRETREATED PER STONE BARK.
RECORD PLANS	
MATERIALS	
GRAVEL - HOWARD PIT CRUSHED GRAVEL - HOWARD PIT PEASTONE - WAREHO PLANT RIP-RAP - DEMERS PLANT GUIDE RAIL & GUIDE POSTS	METAL PLATE PIPE - N. ENG. MET. METAL CULVERTS - N. ENG. METAL CONCRETE CULVERTS - VT. CONG. PIPE CORR. - PIPE CORR. CO. AMERICAN ST. WIRE CO.
CONTRACTOR - M.C. BUCK C.S. ENGR - WALTER W. REDMOND RECORD PLANS - E.C. GLYSSON	CONTRACT DATED - OCT. 25, 1957 CONTRACT STARTED - NOV. 4, 1957 CONTRACT COMPLETED - JULY 5, 1958 CONTRACT ACCETED - JULY 5, 1958

PROJECT NO. 404
LENGTH 2.236 MI.
NUMBER 5 119 (M)
TYPE 20 ft. Tack Coat of Bit. Materials with
15 ft. 2" Rip-Rap Stone
CONTRACTOR M.C. Buck
LOCATION Johnson, N.H.
Remarks: Highway at road, stable, west of
Hyde Park Town Line, and extend to
Hyde Park.

GROUND ELEVATION	DATUM	LINE
GRADE ELEVATION	DATUM	LINE
CURVE DATA		
DEFLECTION OF ANGLE	A
DEGREE OF CURVE	D
RADIUS OF CURVE	R
TANGENT DISTANCE	T
LENGTH OF CURVE	L
EXTERNAL DISTANCE	E
POINT OF INTERSECTION	P.I.
POINT OF CURVE	P.C.
POINT OF TANGENT	P.T.
POINT ON TANGENT	P.O.T.
POINT ON SUB-TANGENT	POST



SCALES

TITLE	1" = 200'
TYPICAL	1" = 2'
PLAN	1" = 50'
HORIZONTAL	1" = 50'
PROFILE	1" = 10'
VERTICAL	1" = 10'
CROSS-SECTIONS	1" = 5'

THESE PLANS ARE SUBJECT TO SUCH REVISIONS AS MAY BE REQUIRED BY THE BUREAU OF PUBLIC ROADS OR THE COMMISSIONER OF HIGHWAYS.

CONSTRUCTION IS TO BE CARRIED ON IN ACCORDANCE WITH THE PLANS AND THE STANDARD SPECIFICATIONS FOR HIGHWAY AND BRIDGE CONSTRUCTION OF JANUARY 1956 SUBMITTED TO THE BUREAU OF PUBLIC ROADS AS APPROVED JULY 5, 1956 INCLUDING ALL SUBSEQUENT APPROVED REVISIONS AND SUCH REVISED SPECIFICATIONS AND SPECIAL PROVISIONS AS ARE SUBMITTED WITH THE PLANS.

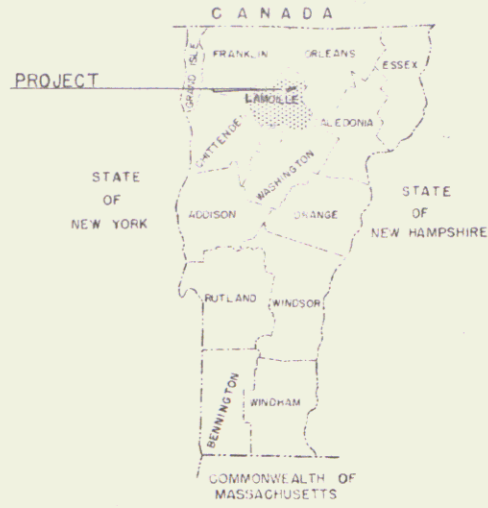
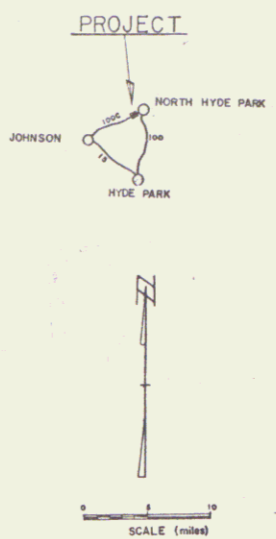
APPROVED	APPROVED	APPROVED	APPROVED	APPROVED	APPROVED
SECONDARY ENGINEER	ENGINEER IN CHARGE	BRIDGE ENGINEER	APPROVED	APPROVED	APPROVED
DATE	DATE	DATE	DATE	DATE	DATE
	Sept. 27, 1957	Sept. 27, 1957	Sept. 27, 1957	Sept. 27, 1957	Sept. 27, 1957

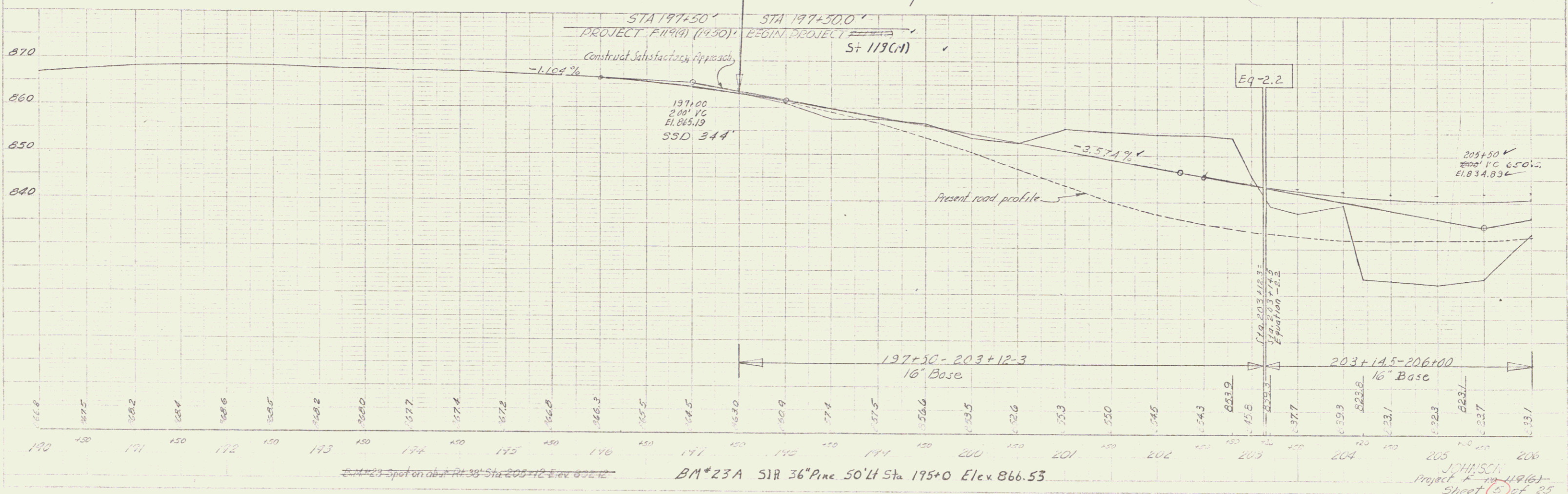
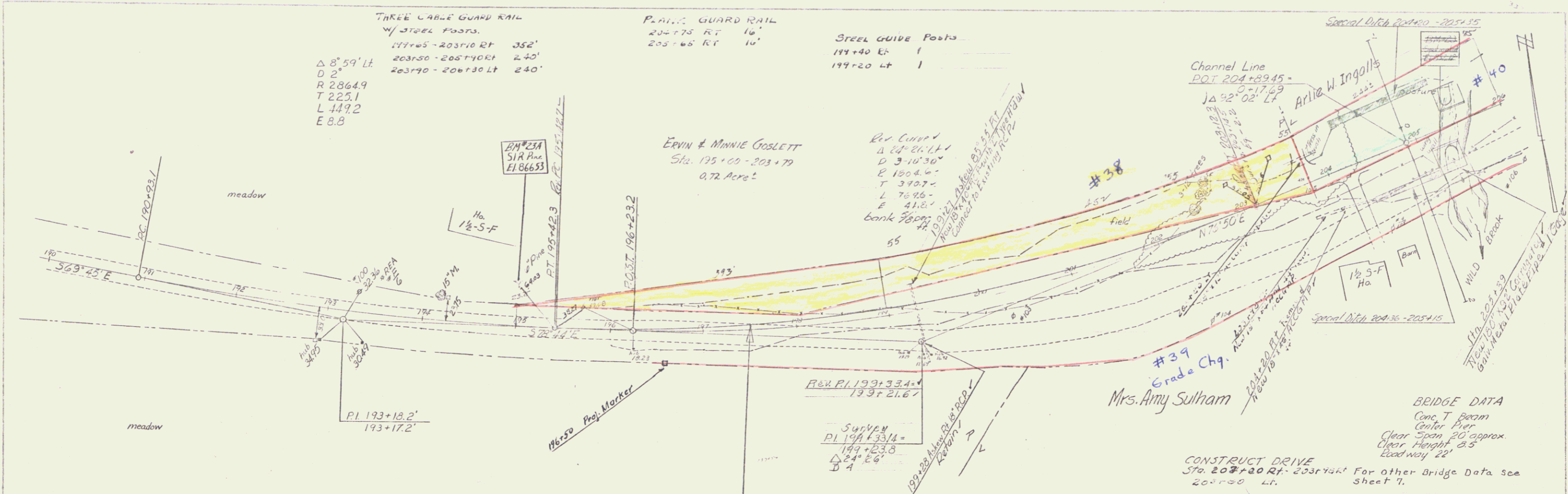
NOTES: ALL FURTHER INFORMATION CONCERNING FINAL QUANTITIES, DISTANCES AND OTHER DETAILS RELATIVE TO THIS PROJECT MAY BE FOUND IN EITHER THE FIELD BOOKS OR THE FINAL SITE FILE.

DEPARTMENT OF COMMERCE
BUREAU OF PUBLIC ROADS

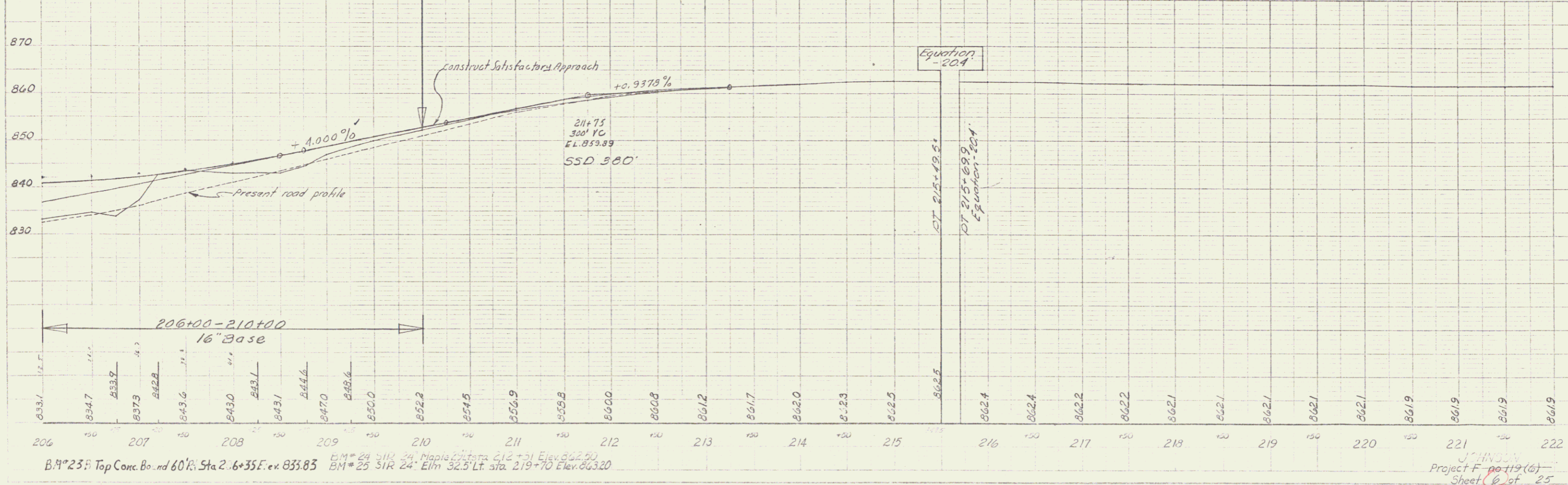
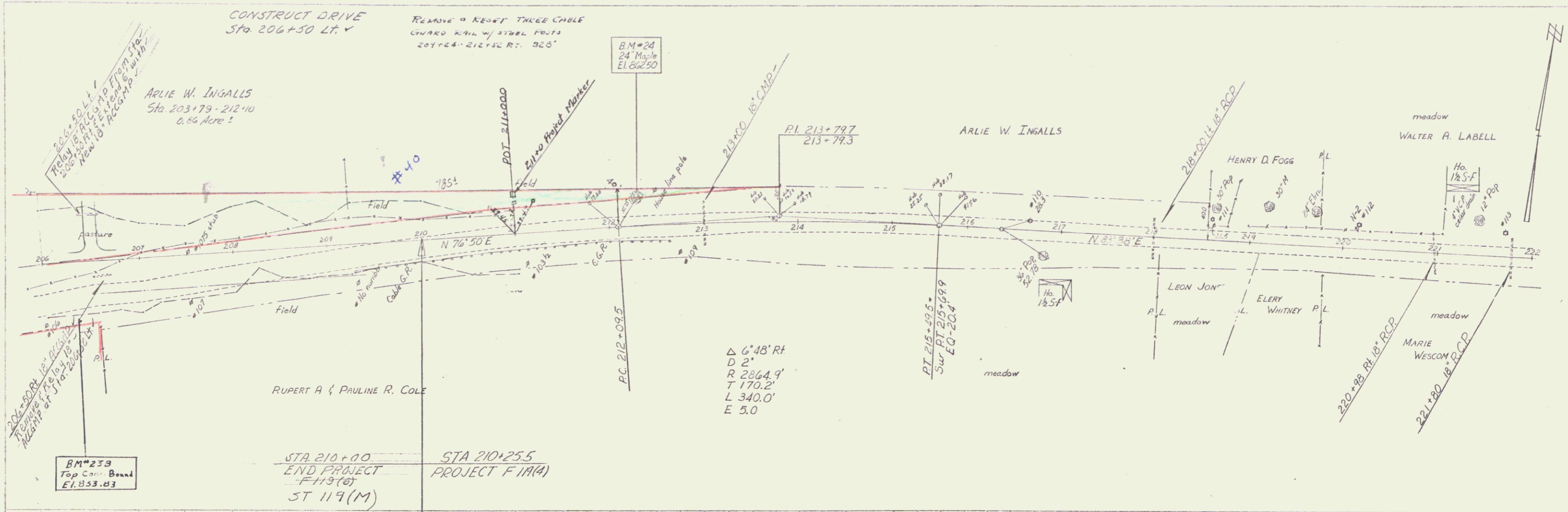
APPROVED	FILED
PROJECT	NO. 404
NO.	119 (M)
SHEET	1 OF 25

REG. ROAD	STATE	PROJECT NO.	SHEET NO.	TOTAL SHEETS
VT.	VT.	F 119 (M)	1	25





BM*23A S1R 36" Pine 50' Lt Sta 195+0 Elev 866.53
 JOHNSON
 Project F-119(6)
 Sheet 2 of 25
 ST 119 (M) 2



B.M. #233 Top Conc. Band 60" Sta. 206+35 E. ex. 853.83
 B.M. #24 24' Maple 212+52 E. 862.50
 B.M. #25 25' Elm 219+70 E. 863.20
 J. CHINDEN
 Project F-119(6)
 Sheet 6 of 25
 ST 119 (M) 3