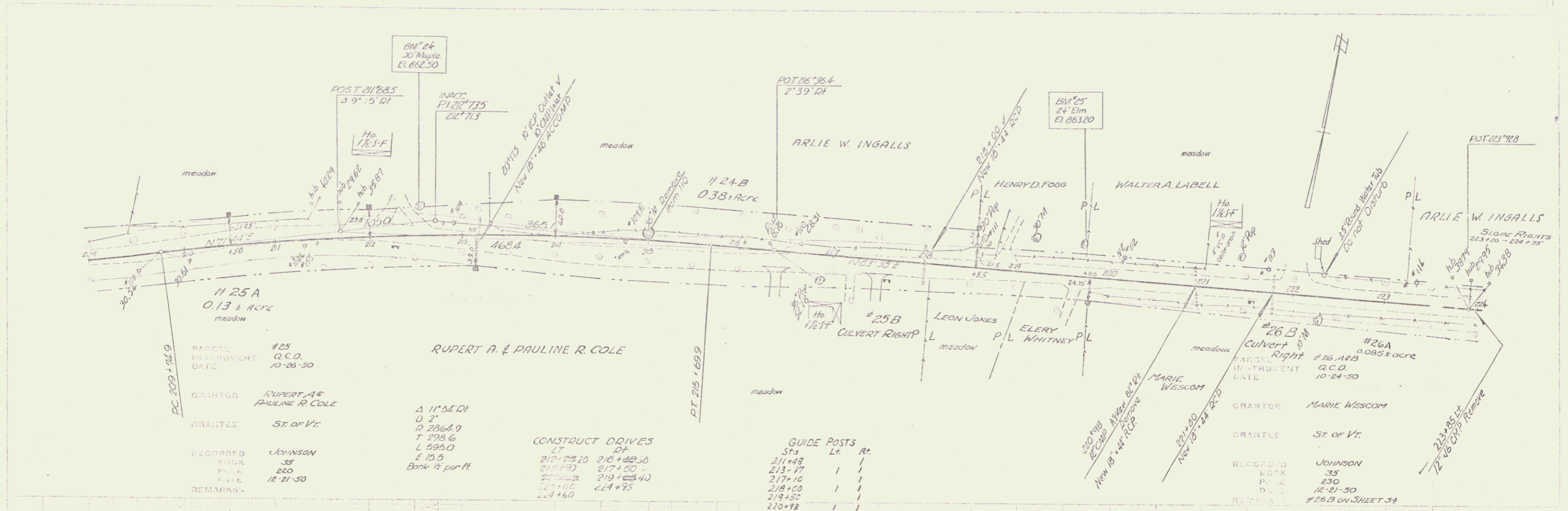


1/2" = 100'
 1/4" = 20'
 1/8" = 10'



Station	Elevation
844.2	209
842.8	210
841.9	211
840.9	212
837.3	213
835.9	214
838.4	215
839.3	216
839.1	217
837.6	218
837.6	219
838.5	220
839.8	221
841.7	222
842.9	223
843.0	224
840.3	225
840.7	226
840.7	227
840.7	228
840.7	229
840.7	230
840.7	231
840.7	232
840.7	233
840.7	234
840.7	235
840.7	236
840.7	237
840.7	238
840.7	239
840.7	240
840.7	241
840.7	242
840.7	243
840.7	244
840.7	245
840.7	246
840.7	247
840.7	248
840.7	249
840.7	250
840.7	251
840.7	252
840.7	253
840.7	254
840.7	255
840.7	256
840.7	257
840.7	258
840.7	259
840.7	260
840.7	261
840.7	262
840.7	263
840.7	264
840.7	265
840.7	266
840.7	267
840.7	268
840.7	269
840.7	270
840.7	271
840.7	272
840.7	273
840.7	274
840.7	275
840.7	276
840.7	277
840.7	278
840.7	279
840.7	280
840.7	281
840.7	282
840.7	283
840.7	284
840.7	285
840.7	286
840.7	287
840.7	288
840.7	289
840.7	290
840.7	291
840.7	292
840.7	293
840.7	294
840.7	295
840.7	296
840.7	297
840.7	298
840.7	299
840.7	300

BM #24 30' Maple 29 ft sta 212+52 Elev 862.50
 BM #25 24' Elm 325 ft sta 219+70 Elev 863.20

JOHNSON - HYDE PARK
 Series E-111(4)
 Sheet 33 of 57 sheets