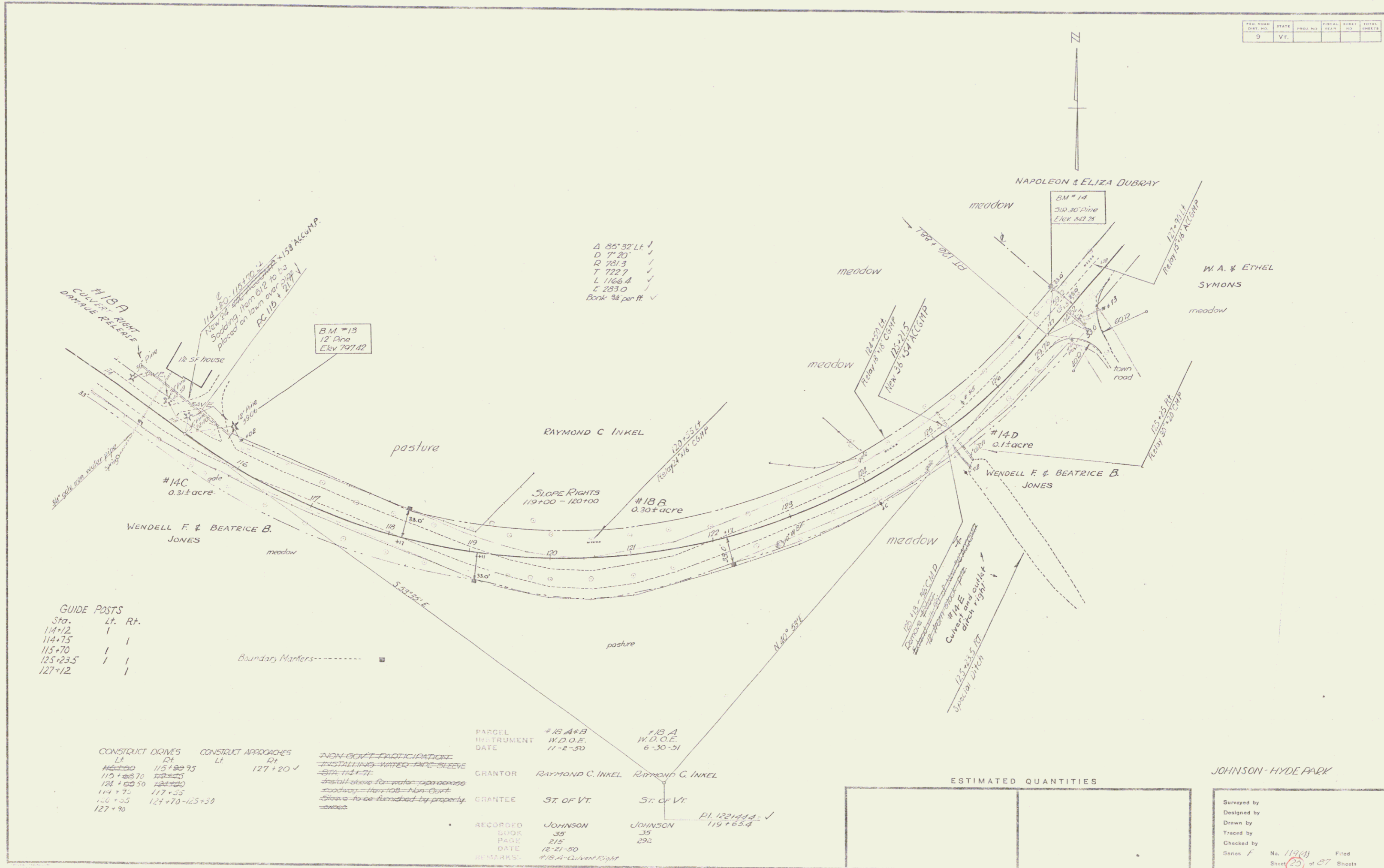


FED. ROAD DIST. NO.	STATE	PROJ. NO.	FISCAL YEAR	SHEET NO.	TOTAL SHEETS
9	Vt.				



Δ 85°32' L.L. ✓
 D 7' 20" ✓
 R 751.3 ✓
 T 722.7 ✓
 L 1166.4 ✓
 E 283.0 ✓
 Bank 3/4 per ft ✓

GUIDE POSTS

Sta.	Lt.	Rt.
114+12	1	
114+75	1	1
115+70	1	1
125+23.5	1	1
127+12	1	1

Boundary Markers:

CONSTRUCT DRIVES		CONSTRUCT APPROACHES	
Lt	Rt	Lt	Rt
110+00	115+00-75		127+20 ✓
114+75	117+35		
126+35	127+70-125+30		
127+90			

NON-GOVT PARTICIPATION
 INSTALLING WATER PIPES
 WITH THE CITY
 install water pipe across
 driveway - from 108 - Non-Govt.
 slope to be furnished by property
 owner

PARCEL INSTRUMENT DATE	#18 A & B W.D.O.E. 11-2-50	#18 A W.D.O.E. 6-30-51
GRANTOR	RAYMOND C. INKEL	RAYMOND C. INKEL
GRANTEE	ST. OF VT.	ST. OF VT.
RECORDED BOOK	JOHNSON 35	JOHNSON 292
PAGE	218	292
DATE	12-21-50	
REMARKS	#18 A - CLARENCE	PL 122144-1 119+65.4

ESTIMATED QUANTITIES

--	--

JOHNSON - HYDE PARK

Surveyed by		Filed	
Designed by		No. 113(4)	
Drawn by		Sheet 25	of 27 Sheets
Traced by			
Checked by			
Series F			