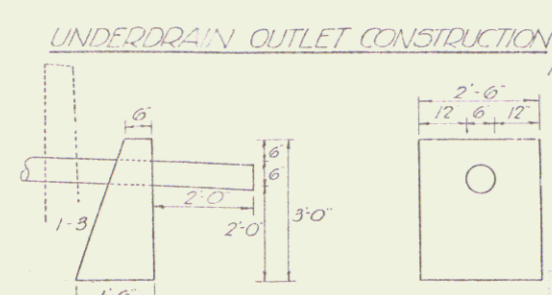
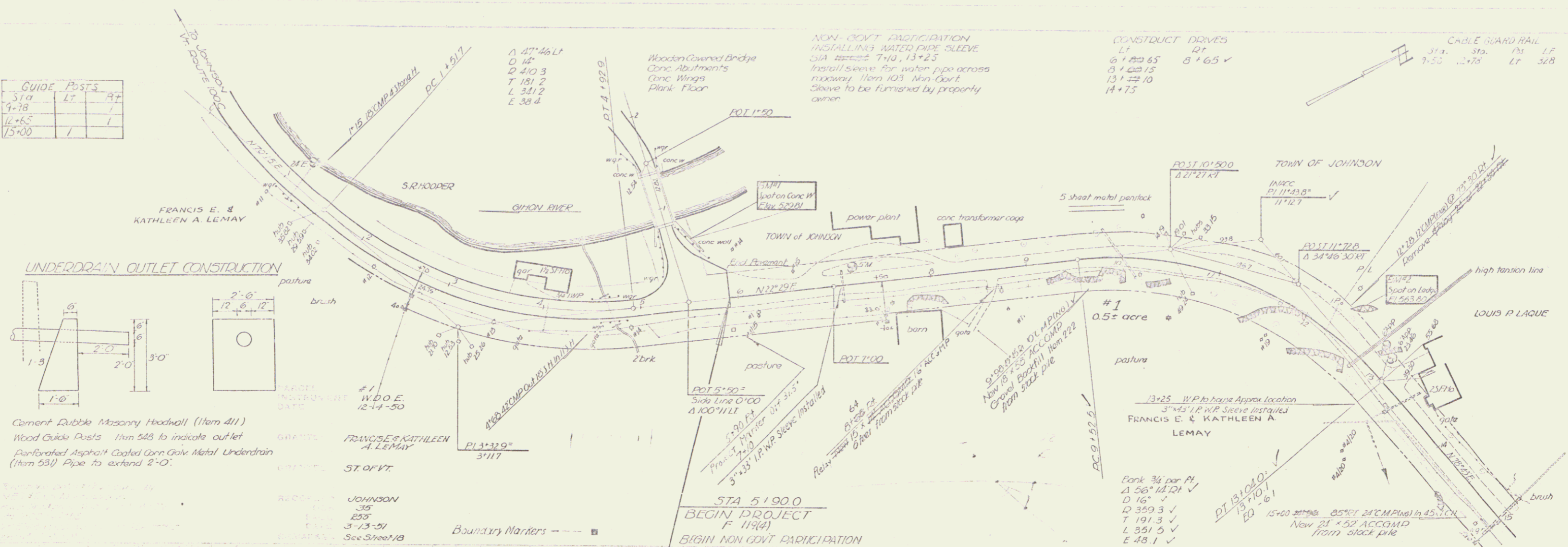
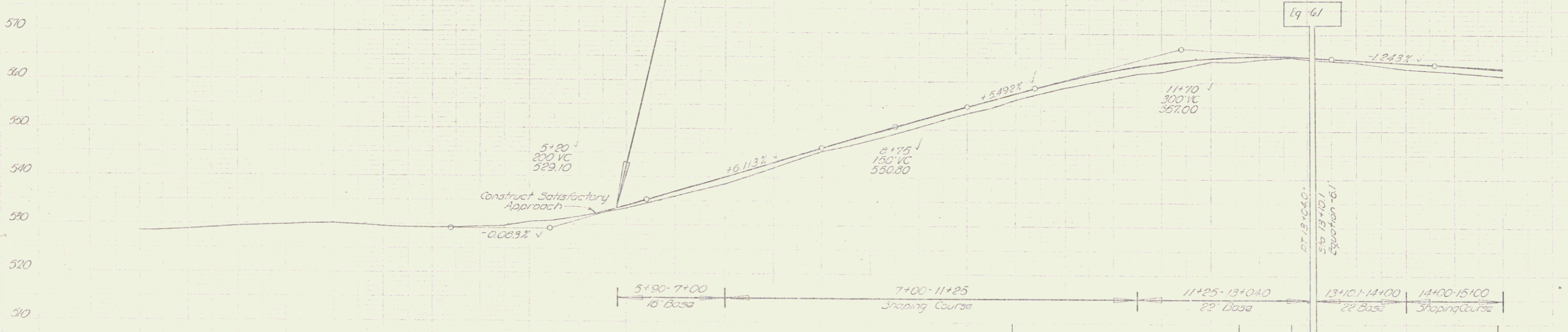


Sta	LT	RT
4+78		
14+65		
15+00		



Cement Rubble Masonry Hoodwall (Item 411)  
 Wood Guide Posts 1/2" dia to indicate outlet  
 Perforated Asphalt Coated Cor. Galv. Metal Underdrain (Item 531) Pipe to extend 2'-0"

W.D.O.E. #1  
 12-14-50  
 FRANCIS E. & KATHLEEN A. LEMAY  
 ST. OF VT.  
 JOHNSON  
 3-13-51  
 See Street 18



528.6	528.5	528.6	529.3	529.8	530.1	529.5	529.3	529.2	529.4	529.6	530.3	530.8	531.7	532.5	533.3	536.0	537.6	538.6	542.0	545.2	546.8	547.3	550.6	552.0	553.4	554.7	556.1	556.0	557.5	558.9	560.9	561.6	563.1	563.1	564.5	564.4	564.9	565.2	565.0	565.0	564.2	562.9	562.2	561.7																		
1	1/16	1/8	1/4	1/2	3/4	1	1 1/4	1 1/2	1 3/4	2	2 1/4	2 1/2	2 3/4	3	3 1/4	3 1/2	3 3/4	4	4 1/4	4 1/2	4 3/4	5	5 1/4	5 1/2	5 3/4	6	6 1/4	6 1/2	6 3/4	7	7 1/4	7 1/2	7 3/4	8	8 1/4	8 1/2	8 3/4	9	9 1/4	9 1/2	9 3/4	10	10 1/4	10 1/2	10 3/4	11	11 1/4	11 1/2	11 3/4	12	12 1/4	12 1/2	12 3/4	13	13 1/4	13 1/2	13 3/4	14	14 1/4	14 1/2	14 3/4	15

BM #1 Spot Conc Wing 2'15" at Sta 0+52 Side Line 51+50.0 Lt Elev 529.51  
 BM #2 Spot Leage 4'2" Lt Sta 12+48 Elev 563.50

JOHNSON HYDE PARK  
 Series No. 11760  
 Sheet 17 of 27