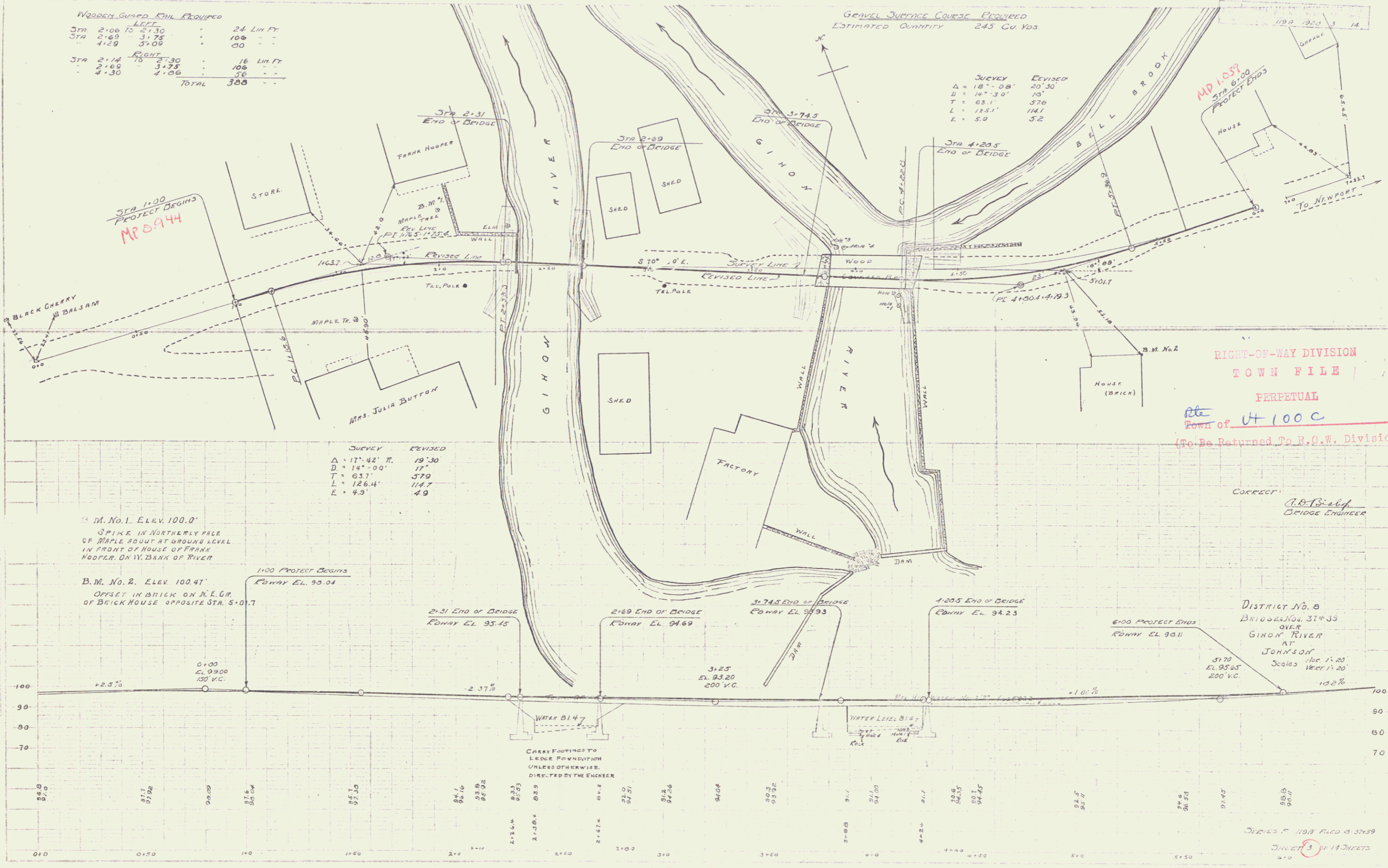


WOODEN GUARD RAIL REQUIRED

STATION	TO	LENGTH
2:08	TO 2:30	22 LIN. FT.
2:49	TO 3:75	108
4:29	TO 5:09	80
<b>TOTAL 300</b>		

GRAVEL SURFACE COURSE REQUIRED  
ESTIMATED QUANTITY 245 CU YDS.

SURVEY	REVISED
Δ = 18°-08'	20°-30'
D = 14°-30'	10'
T = 63.1'	57.0'
L = 125.1'	141'
E = 5.0'	5.2'



B.M. No. 1. ELEV. 100.0'  
SPIKE IN NORTHERLY FACE  
OF MAPLE ABOUT AT GROUND LEVEL  
IN FRONT OF HOUSE OF FRANK  
HOOPER, ON W. BANK OF RIVER

B.M. No. 2. ELEV. 100.47'  
OFFSET IN BRICK ON N.E. COR.  
OF BRICK HOUSE OPPOSITE STA. 5+0.17

RIGHT-OF-WAY DIVISION  
TOWN FILE  
PERPETUAL  
Town of U 100 C  
(To Be Returned To R.O.W. Division)

Corrected  
*A.B. S. & Co.*  
BRIDGE ENGINEERS

DISTRICT No. 5  
BRIDGES Nos. 31 & 33  
OVER  
GINOM RIVER  
AT  
JOHNSON  
Scale: 1" = 20'  
Vertical: 1" = 20'

SERIES P. 1193 FILED 3-27-39  
SHEET 3 OF 11 SHEETS