

INDEX OF SHEETS

SHEET NO.	TITLE SHEET
1	TYPICAL CROSS-SECTION OF IMPROVEMENT (DOUBLE TACK COAT OF REFINED TAR WITH PEASTONE SEAL ITEM 312-A)
2	QUANTITY SHEET (DRAINAGE)
3	EARTHWORK SHEETS
4	PLAN AND PROFILE SHEETS
5-11	PLAN AND DETAILS OF CULVERT AT STATION 374+80.1
12-29	CHANNEL CROSS-SECTION
30	REINFORCING STEEL SCHEDULE
31	PLAN AND DETAILS OF CULVERT AT STATION 433+39.5
32	BANKING AND WIDENING TABLES
33	CONSTRUCTION DETAILS (DRAINAGE AND MARKERS)
34	CONSTRUCTION DETAILS CD2 (TYPICAL GRADING)
35	STANDARD STRUCTURE SHEET S45-45 (TWO CABLE GUARD RAIL)
36	STANDARD STRUCTURE SHEET S8-II (BARRICADES, SIGNS AND LIGHTS)
37	STANDARD STRUCTURE SHEET S40 (BARRICADES, SIGNS AND LIGHTS)
38	STANDARD STRUCTURE SHEET S46-45 (DRAINAGE AND MARKERS)
39	STANDARD STRUCTURE SHEET 47-45 (P.C. DROP INLET)
40	STANDARD STRUCTURE SHEET S53-48 (P.C. R.C.P. DROP INLET)
41	STANDARD STRUCTURE SHEET S53-48 (P.C. R.C.P. DROP INLET)
42	CROSS-SECTION SHEETS
43-163	CROSS-SECTION SHEETS

STATE OF VERMONT
DEPARTMENT OF HIGHWAYS

PROPOSED IMPROVEMENT

FEDERAL PROJECT

PLAN AND PROFILE OF PROPOSED
STATE HIGHWAY

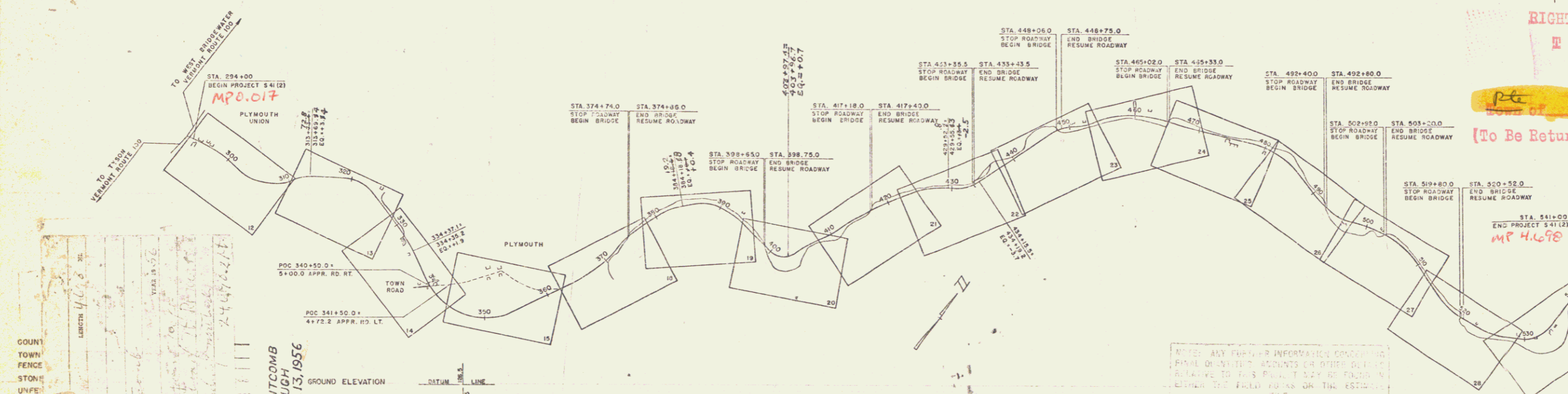
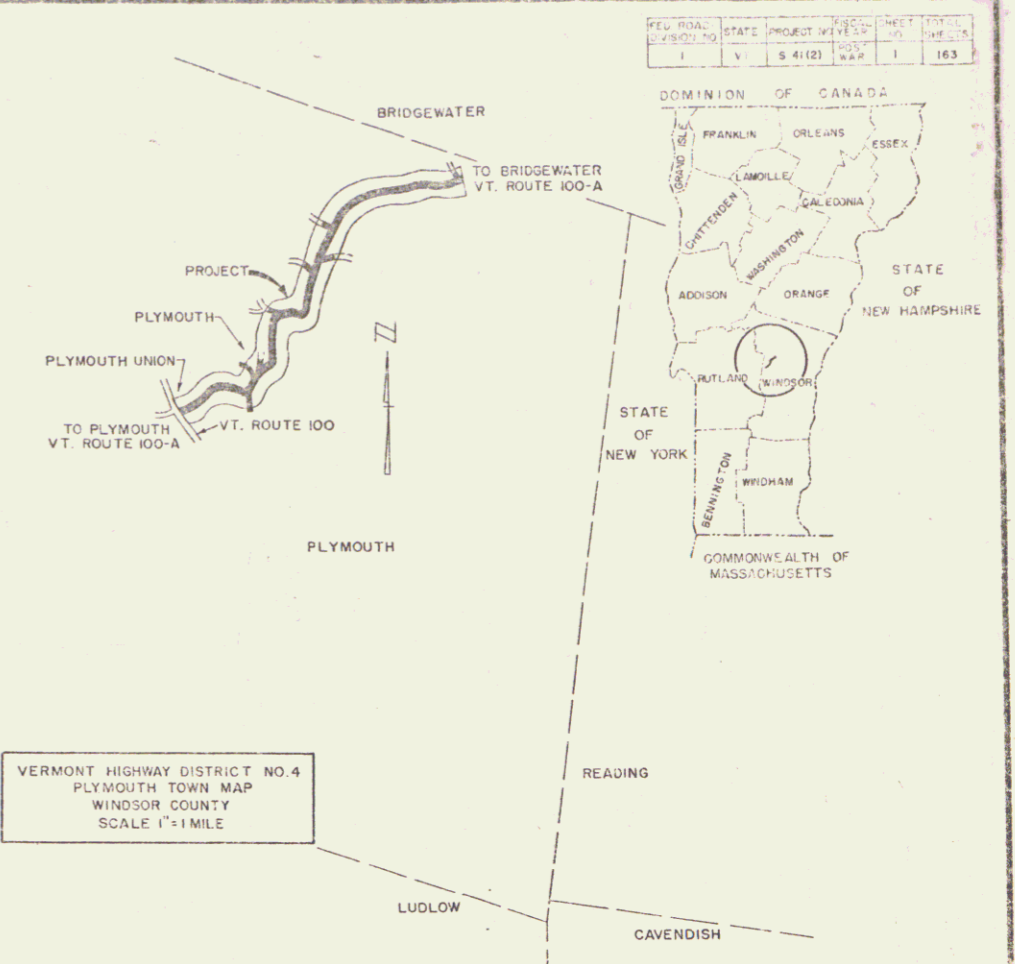
TOWN OF PLYMOUTH

COUNTY OF WINDSOR
VERMONT ROUTE 100-A
PLYMOUTH UNION-BRIDGEWATER ROAD

BEGINNING AT A POINT 100 FEET NORTHERLY OF THE INTERSECTION OF VERMONT ROUTE 100 AND VERMONT ROUTE 100-A AND EXTENDING NORTHERLY 24,698.2 FEET

LENGTH OF ROADWAY 24,408.2 FT. = 4.627 MILES
LENGTH OF BRIDGES 292.0 FT. = 0.056 MILES
LENGTH OF PROJECT 24,698.2 FT. = 4.677 MILES

PROJECT NAME & NUMBER	PLYMOUTH S-41-(2)	TYPE	DOUBLE TACK COAT OF REFINED TAR WITH PEASTONE SEAL	PAVEMENT AREA	57999 Sq. Yds.
RECORD PLANS					
MATERIALS					
GRAVEL-BASE-MOORE PIT & SAILER PIT	REINFORCING STEEL-RYERSON STEEL CO.				
CRUSHED GRAVEL-BLANCHARD PIT	R.C.P.-VERMONT CONCRETE PIPE CO.				
REFINED TAR-KOPPERS PRODUCTS CO.	A.C.C.G.M.P.-BERGER METAL CO.				
PEASTONE-COLD RIVER SAND & GRAVEL CO.	GUARD RAIL CABLE-AMER. STEEL & WIRE CO.				
CEMENT-ALPHA PORTLAND CEMENT CO.	BIT. CON. PVT.-COLD RIVER BIT. CON. PLANT				
CONTRACTOR-FRANK WHITCOMB	CONTRACT DATED-OCT. 6, 1955				
RESIDENT ENGINEER-A.C. DAVIS	CONTRACT STARTED-OCT. 18, 1955				
INSPECTOR-RICHARD RUSSELL	CONTRACT COMPLETED-DEC. 13, 1956				
RECORD PLANS-A.A. CLOUGH	CONTRACT ACCEPTED-DEC. 13, 1956				



COUNT	1
TOWN	PLYMOUTH
FENCE	
STONE	
UNF.	
GUIDE	
RAIL	
RETAIN	
SURVEY	
CURVE	
TROLL	
POWER	
TELEP.	
TREES	
NOTE	

PLYMOUTH S-41-(2)
CONTRACTOR-FRANK WHITCOMB
RECORD PLANS-A.A. CLOUGH
COMPLETION DATE-DEC. 13, 1956

SCALES

TITLE	1" = 800'
TYPICAL	1" = 2'
PLAN	1" = 50'
PROFILE HORIZONTAL	1" = 50'
PROFILE VERTICAL	1" = 10'
CROSS-SECTIONS	1" = 5'

THE CLARKESON ENGINEERING CO., INC.
CONSULTING ENGINEERS
BOSTON MASSACHUSETTS

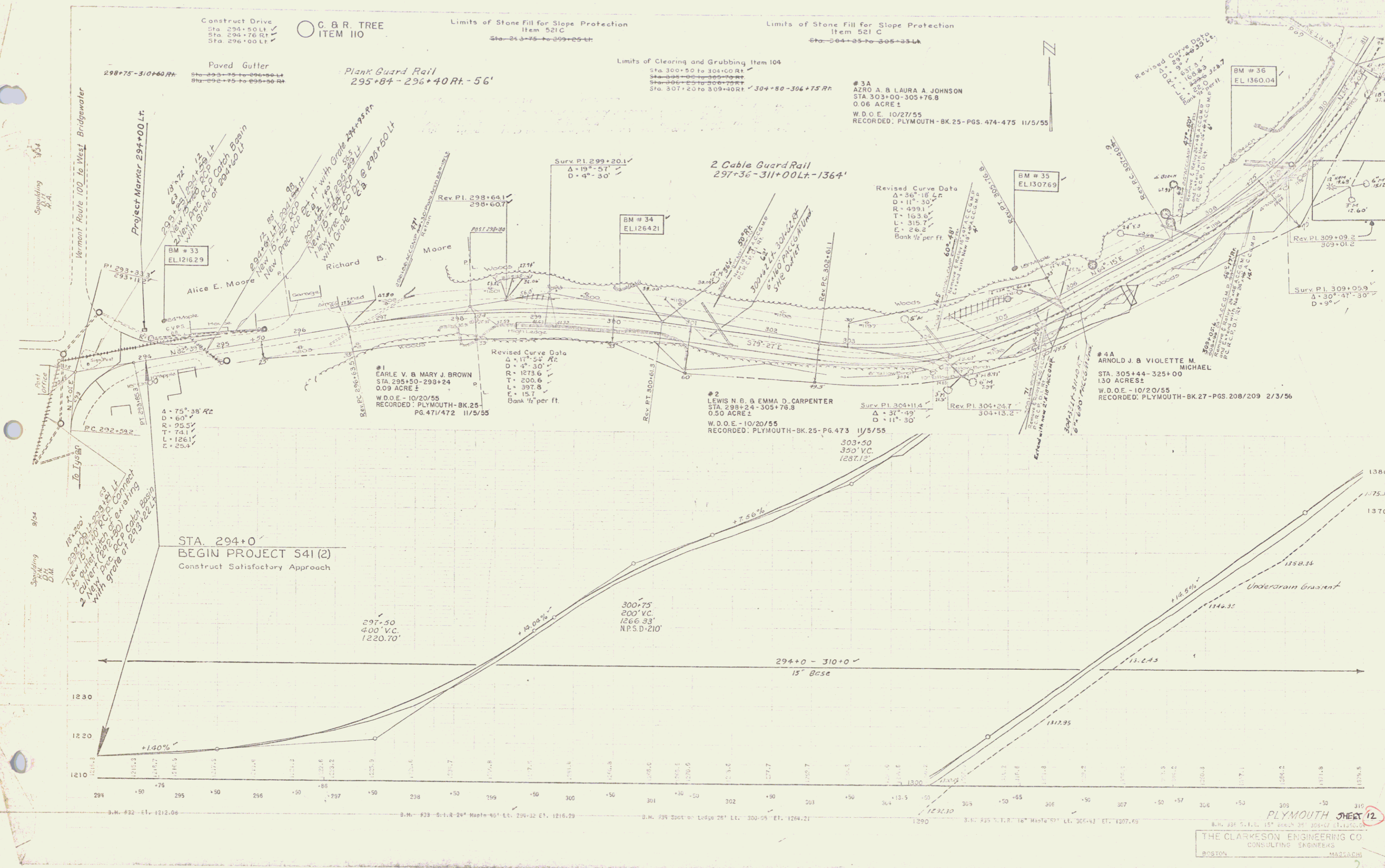
APPROVED	CONSTRUCTION ENGINEER	APPROVED	BRIDGE ENGINEER	APPROVED	STREET ENGINEER	APPROVED	PLANNING ENGINEER
DATE	9/1/55	DATE	7/15/55	DATE	9/1/55	DATE	9/1/55

RIGHT-OF-WAY DIVISION
TOWN FILE
PERPETUAL
VT 100A
(To Be Returned To R.O.W. Division)

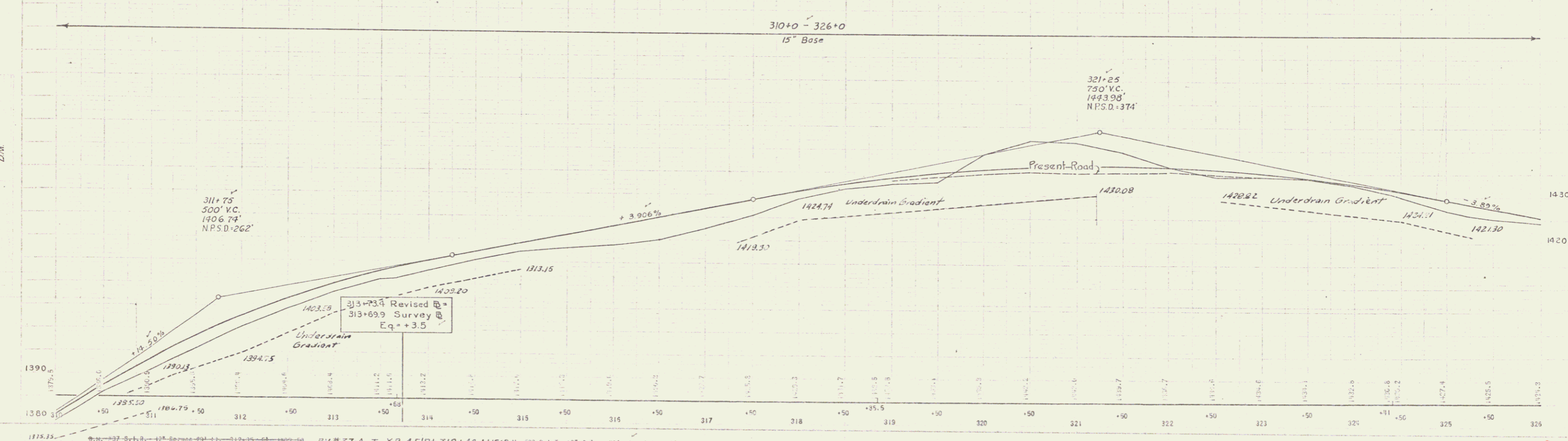
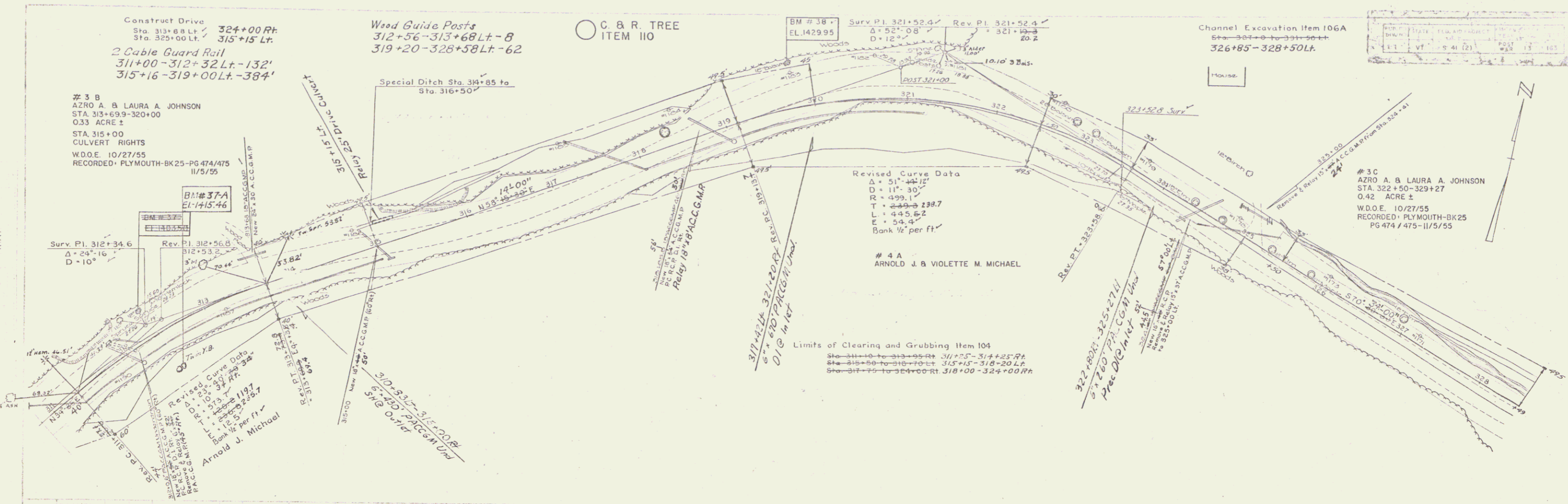
DEPARTMENT OF COMMERCE
BUREAU OF PUBLIC ROADS

RECOMMENDED FOR APPROVAL	DATE
DISTRICT ENGINEER	DATE
APPROVED	DATE
DIVISION ENGINEER	DATE

PROJECT S. NO. 41(2)
SHEET 1 OF 163 SHEETS



PLYMOUTH SHEET 12
 THE CLARKESON ENGINEERING CO.
 CONSULTING ENGINEERS
 BOSTON MASSACHUSETTS



Limits of Clearing and Grubbing Item 104
 Sta 349+00 to 350+00 Lt. 49° 41' - 35° 0' 58" Lt.
 Sta 349+00 to 350+00 Rt. 35° 0' 00" - 35° 0' 58" Lt.

Construct Drives
 360+25 Rt.
 356+00 Lt. & Rt.

2 Cable Guard Rail
 345+85 - 347+29 Rt. - 144'
 347+86 - 356+02 Rt. - 816'

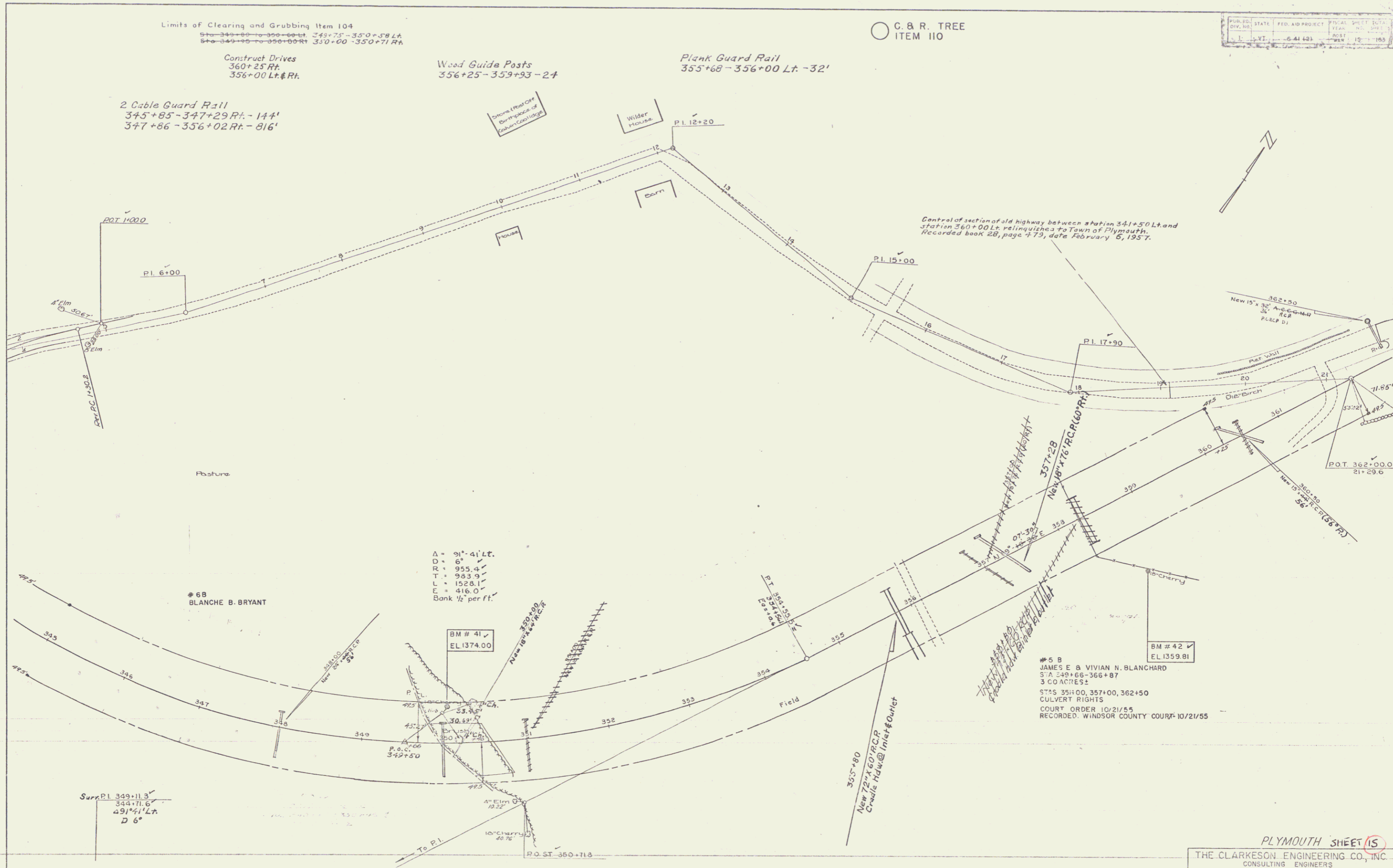
Wood Guide Posts
 356+25 - 359+93 - 24

Plank Guard Rail
 355+68 - 356+00 Lt. - 32'

○ C. & R. TREE
 ITEM 110

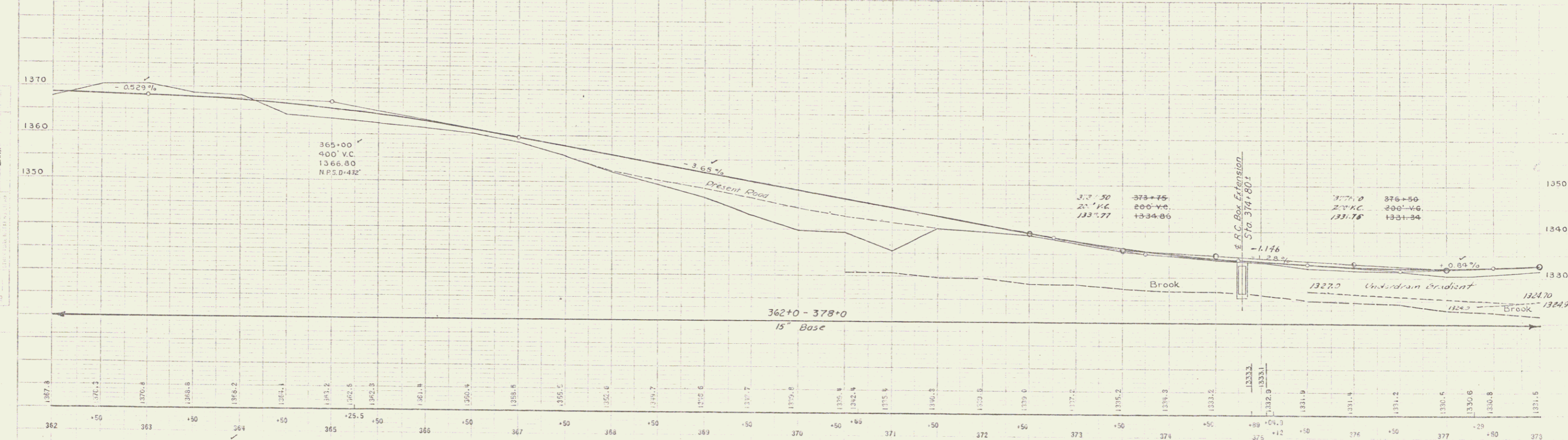
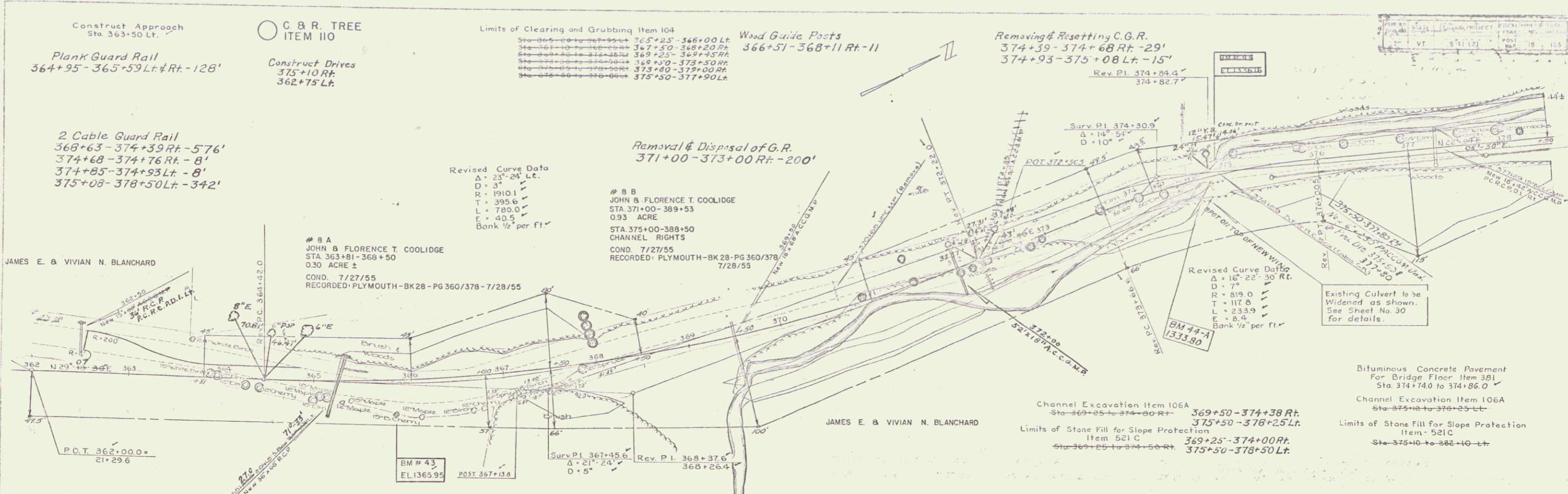
PLAN NO.	STATE	FED. AID PROJECT	FISCAL YEAR	SHEET NO.
1	VT.	6-41-423	1957	15

DATE	BY
10/21/55	J.E.B.
REVISIONS	
1	AS SHOWN



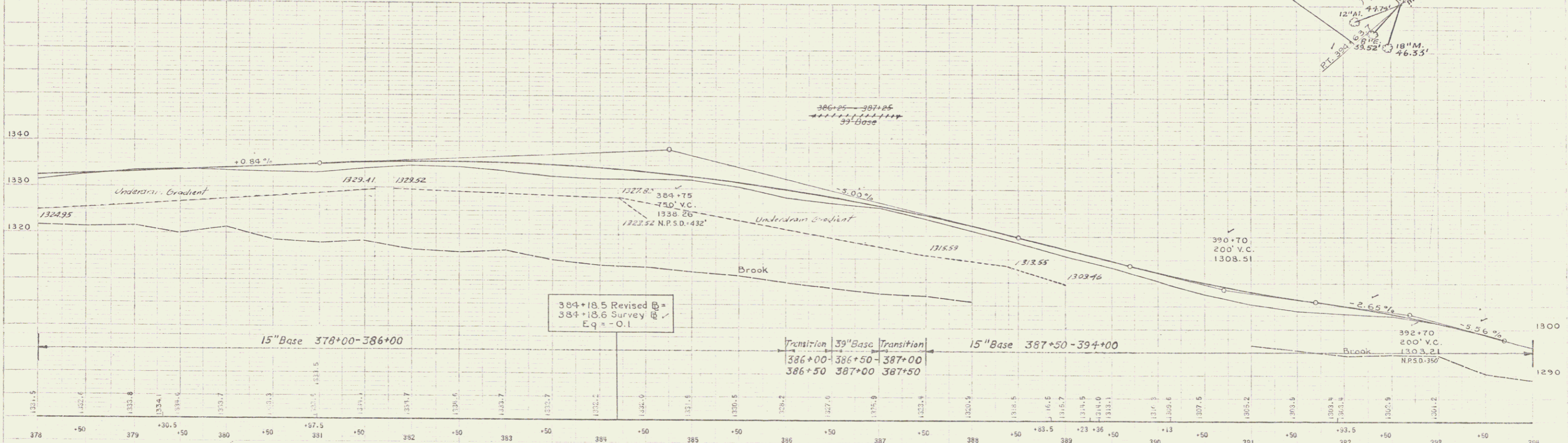
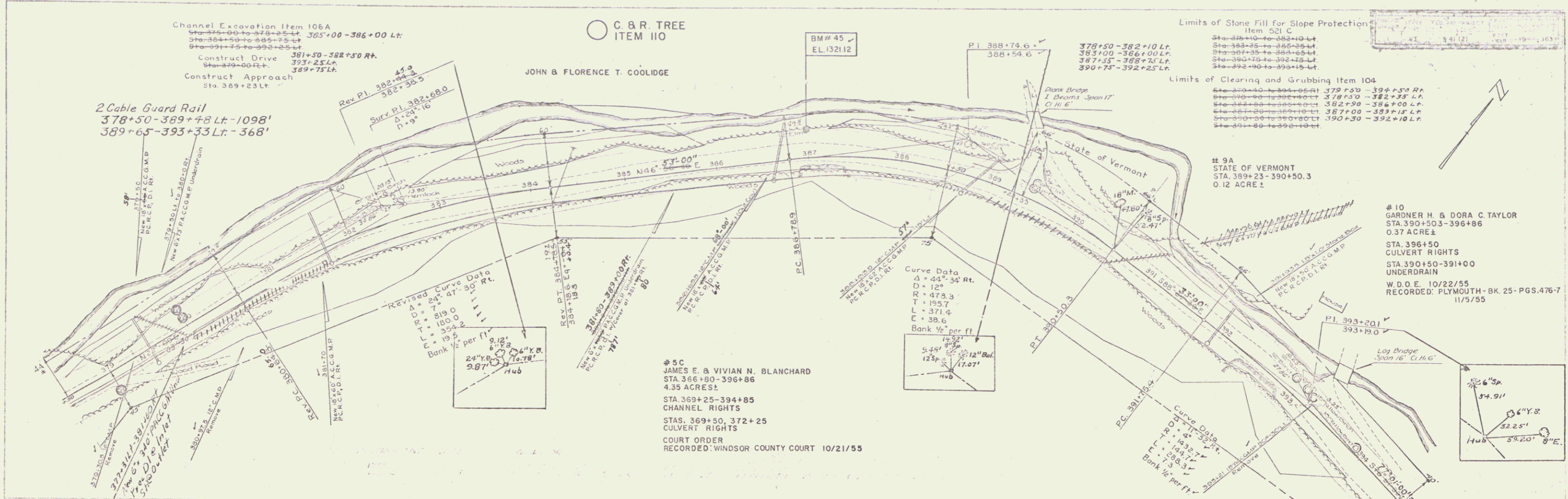
#5 B
 JAMES E. & VIVIAN N. BLANCHARD
 S.A. 43+66-366+87
 3 GO ACRES
 STAS 355+00, 357+00, 362+50
 CULVERT RIGHTS
 COURT ORDER 10/21/55
 RECORDED WINDSOR COUNTY COURT 10/21/55

PLYMOUTH SHEET 15
 THE CLARKSON ENGINEERING CO., INC.
 CONSULTING ENGINEERS
 BOSTON MASSACHUSETTS



Spotting
D.H.

Spotting
D.H.



9/04
Sponsoring
D.H.

9/04
Sponsoring
B.V.

Limits of Stone Fill for Slope Protection Item 52 C

378+00-382+10 Lt.	380+00-382+10 Lt.
383+00-386+00 Lt.	380+00-382+10 Lt.
387+55-388+75 Lt.	380+00-382+10 Lt.
390+75-392+25 Lt.	380+00-382+10 Lt.

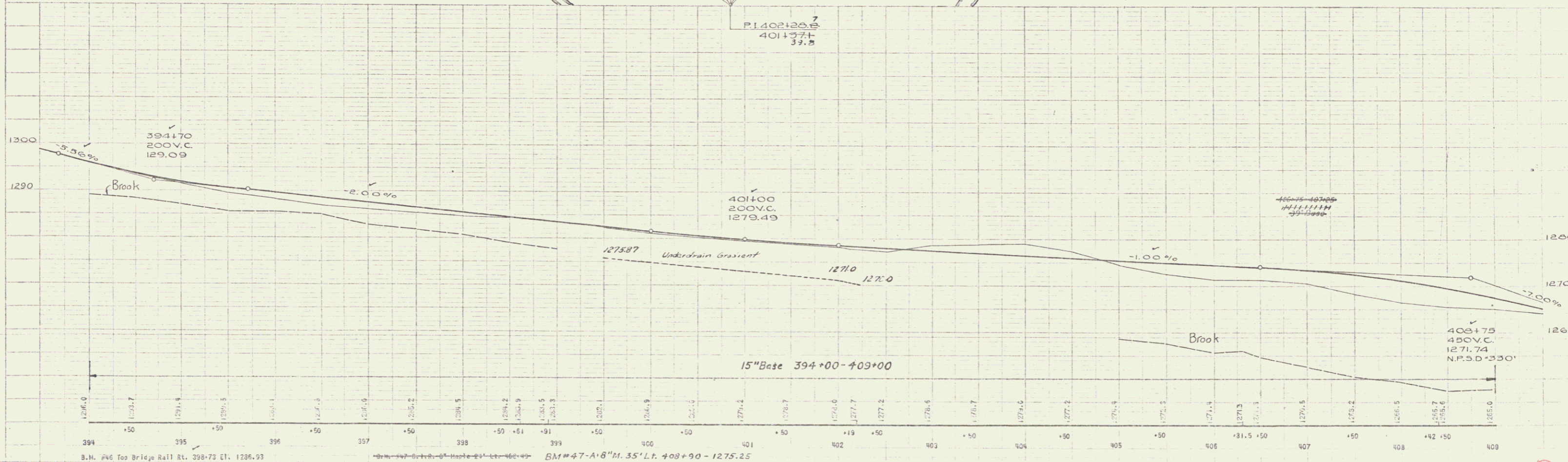
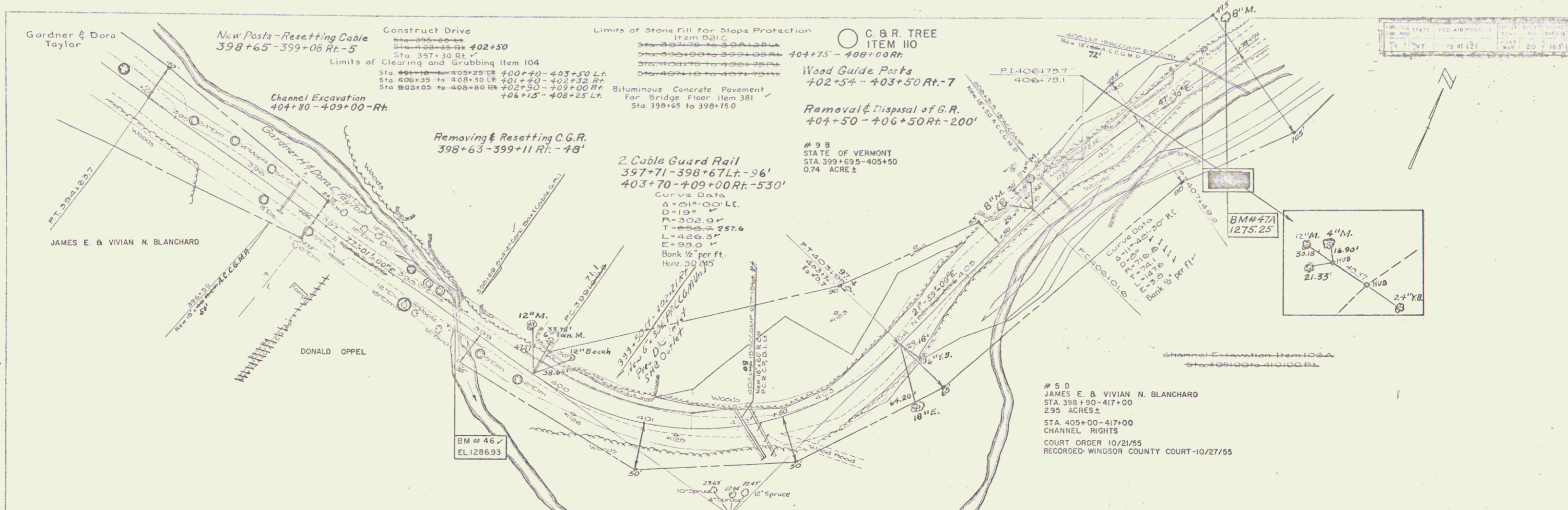
Limits of Clearing and Grubbing Item 104

378+00-382+10 Lt.	379+50-394+50 Rt.
383+00-386+00 Lt.	378+50-382+35 Lt.
387+00-388+75 Lt.	382+90-386+00 Lt.
390+75-392+25 Lt.	387+00-389+10 Lt.
	390+30-392+10 Lt.

9A
STATE OF VERMONT
STA. 389+23-390+50.3
0.12 ACRE ±

10
GARDNER H. & DORA C. TAYLOR
STA. 390+50.3-396+86
0.37 ACRE ±
STA. 396+80
CULVERT RIGHTS
STA. 390+50-391+00
UNDERDRAIN
W.D.O.E. 10/22/55
RECORDED: PLYMOUTH-BK. 25-PGS. 476-7
11/5/55

5C
JAMES E. & VIVIAN N. BLANCHARD
STA. 386+80-396+86
4.35 ACRES ±
STA. 369+25-394+85
CHANNEL RIGHTS
STAS. 369+50, 372+25
CULVERT RIGHTS
COURT ORDER
RECORDED: WINDSOR COUNTY COURT 10/21/55



Scale 1" = 40'

DATE: 10/21/55

BY: J.E.B.

Scale 1" = 40'

DATE: 10/21/55

BY: J.E.B.

Removing & Resetting C.G.R.
 417+22-417+41 Lt. - 19'
 416+95-417+29 Rt. - 34'

Channel Excavation Item 106A
 Sta. 409+00 to 409+75 Rt.
 Sta. 418+00 to 411+75 - 416+40 Rt.

Limits of Stone Fill for Slope Protection
 Item 521C
 Sta. 411+75 - 413+00 - Rt.

C. & R. TREE
 ITEM 110

DATE	11/21/55
SCALE	1" = 40'
SHEET	21
PROJECT	PL 103

Wood Guide Posts
 410+15-411+43 Rt. - 9
 413+76-416+74 Rt. - 20

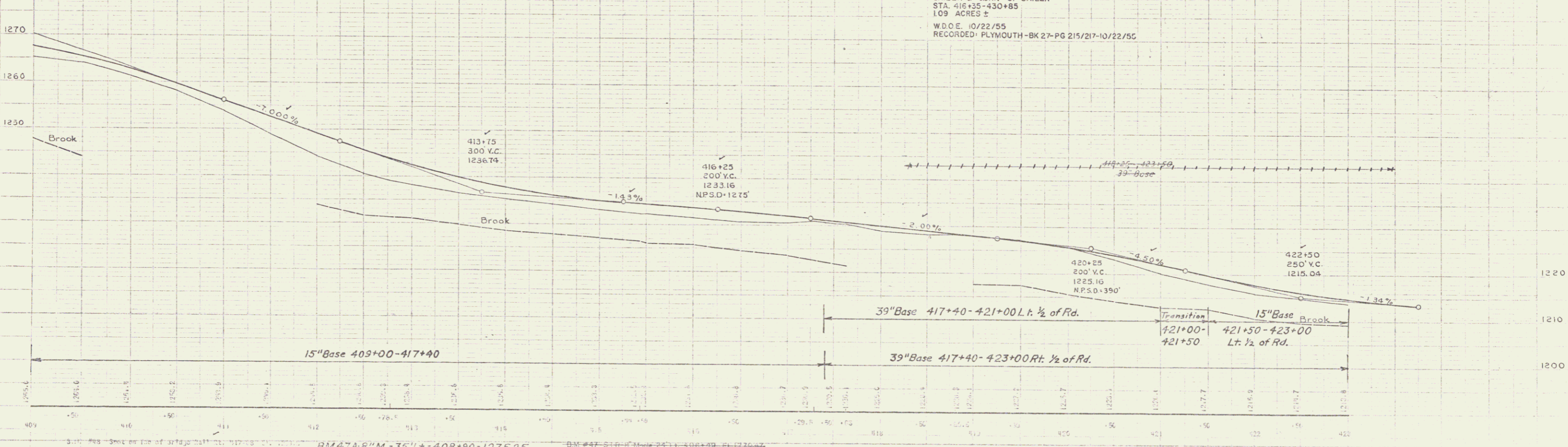
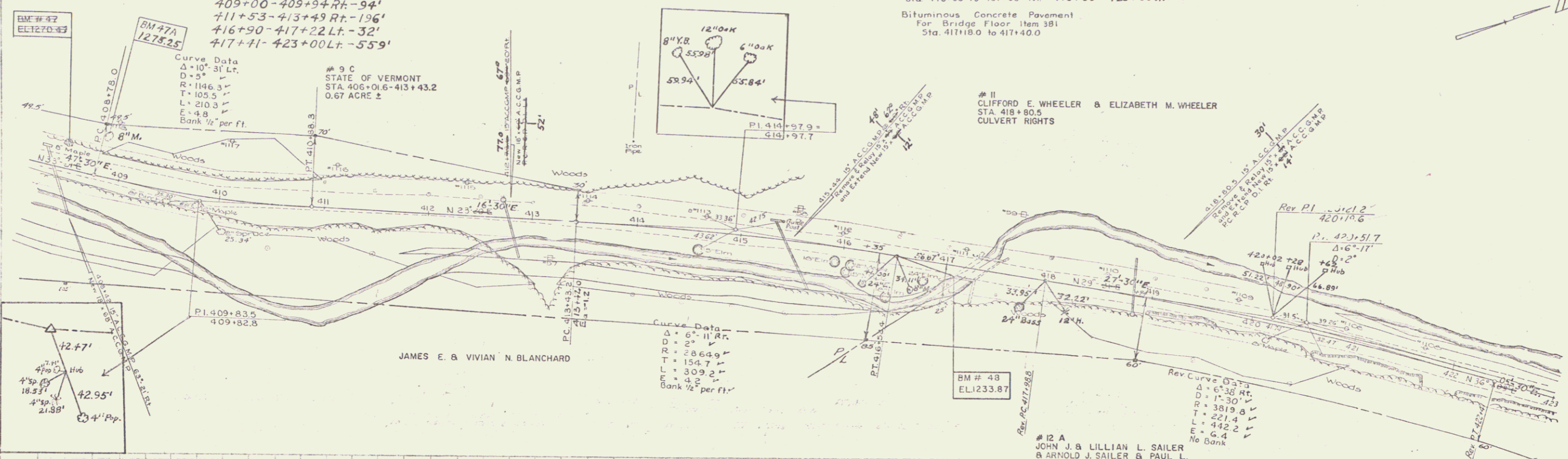
2 Cable Guard Rail
 409+00-409+94 Rt. - 94'
 411+53-413+49 Rt. - 196'
 416+90-417+22 Lt. - 32'
 417+41-423+00 Lt. - 559'

Limits of Clearing and Grubbing Item 104

Bituminous Concrete Pavement
 For Bridge Floor Item 381
 Sta. 417+18.0 to 417+40.0

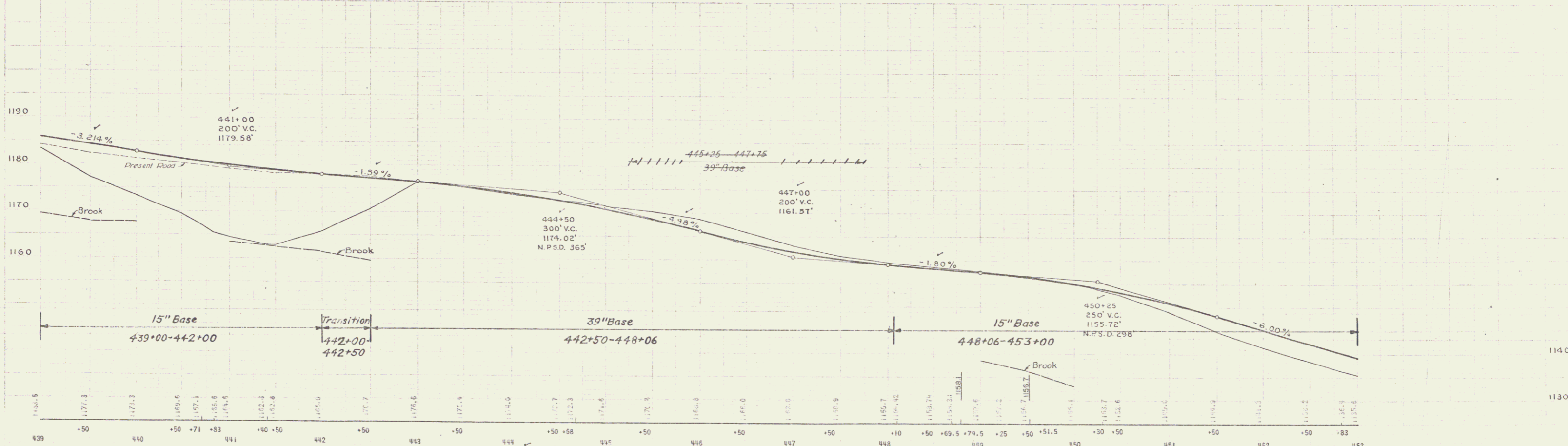
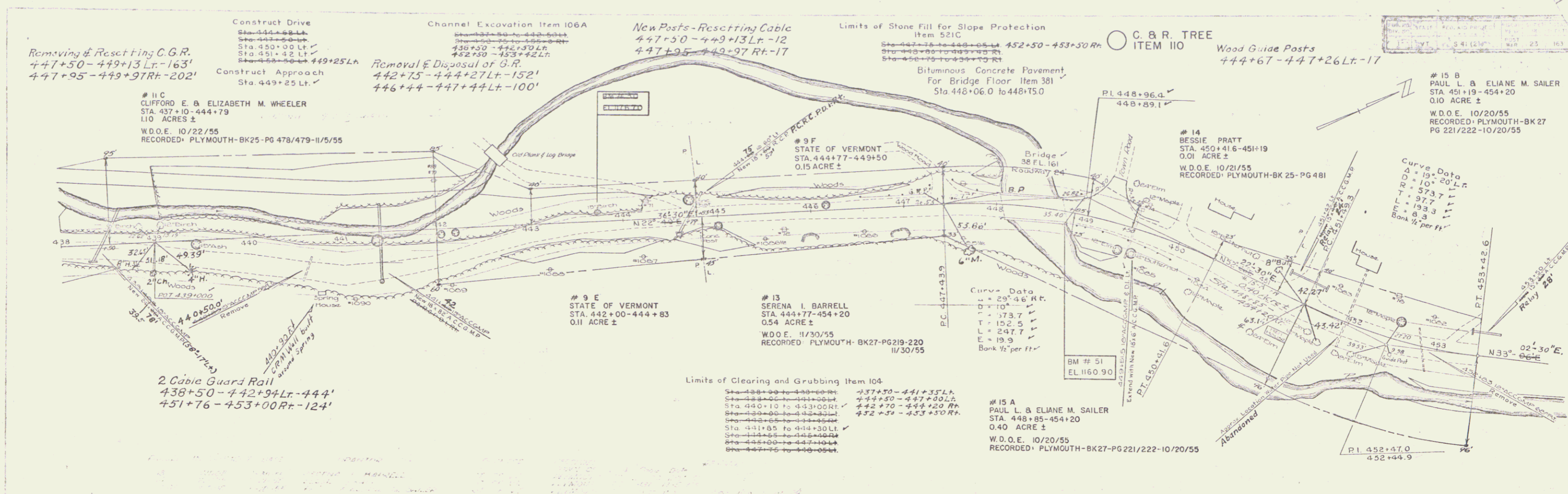
11
 CLIFFORD E. WHEELER & ELIZABETH M. WHEELER
 STA. 418+80.5
 CULVERT RIGHTS

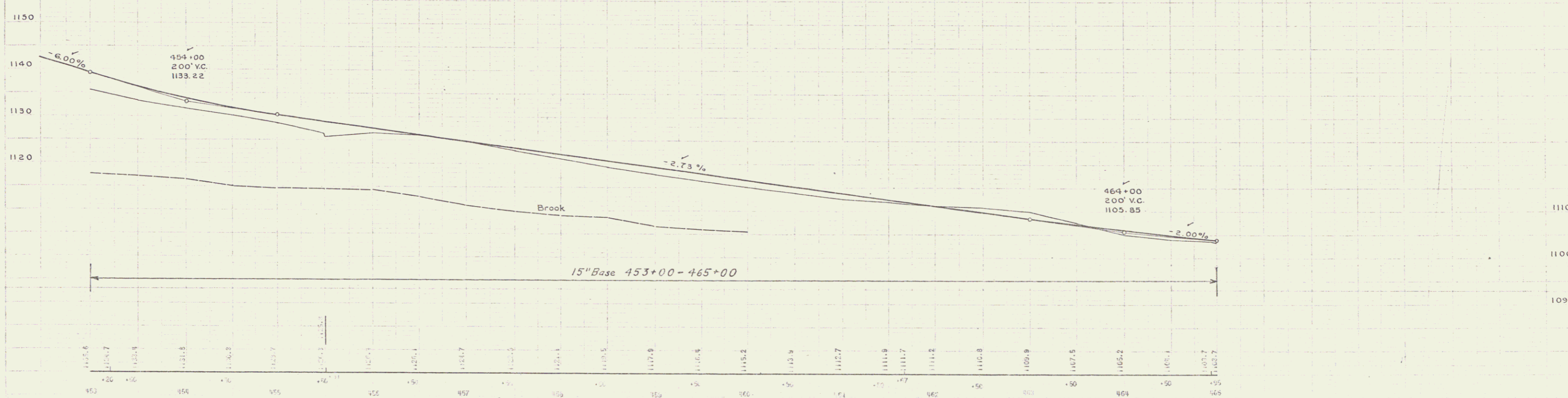
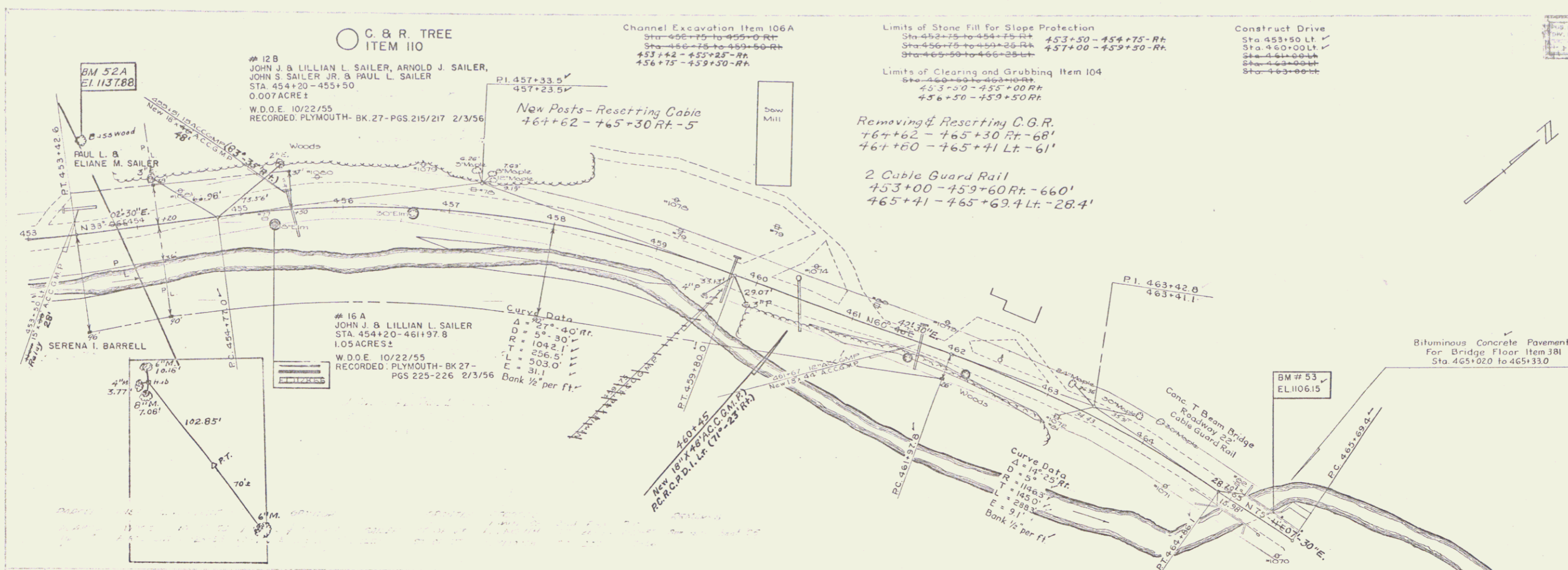
12 A
 JOHN J. & LILLIAN L. SAILER
 & ARNOLD J. SAILER & PAUL L.
 SAILER & JOHN S. SAILER
 STA. 416+35-430+85
 1.09 ACRES ±
 W.D.O.E. 10/22/55
 RECORDED PLYMOUTH-BK 27-PG 215/217-10/22/55



Surveying
D.H.

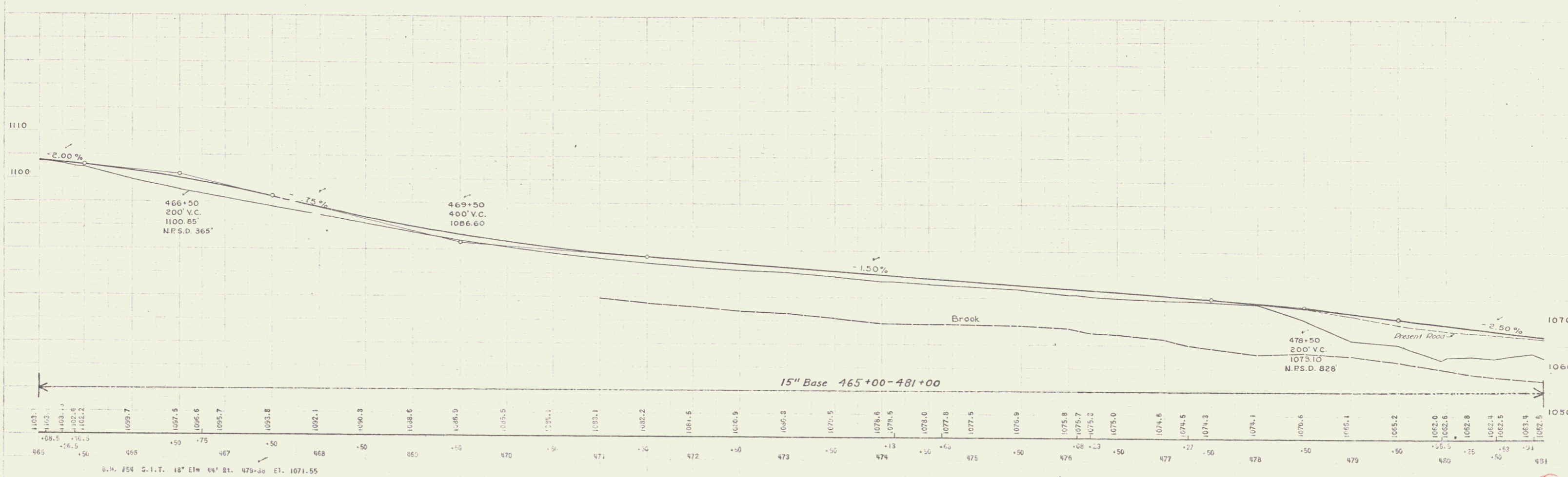
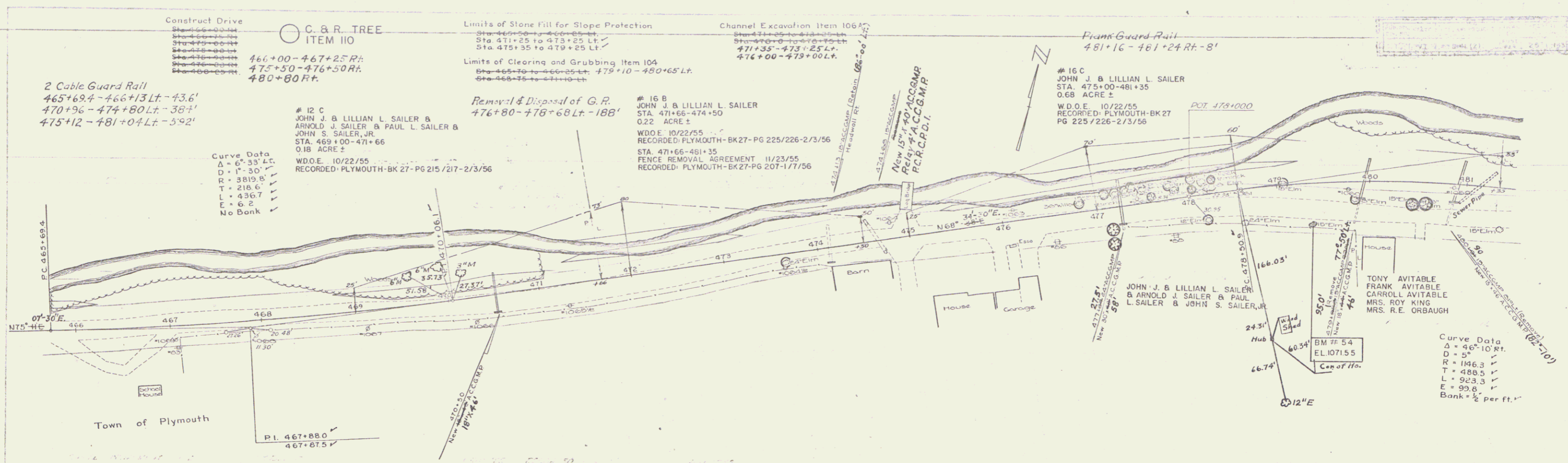
9/54
Surveying
D.H.





BM # 52-A Basswood 85' Lt. - 453+60 - 1137.88

PLYMOUTH SHEET 24
 THE CLARKESON ENGINEERING CO., INC.
 CONSULTING ENGINEERS
 BOSTON MASSACHUSETTS



Stippling by D.H.

Stippling by D.H.

PLYMOUTH SHEET 25
 THE CLARKSON ENGINEERING CO., INC.
 CONSULTING ENGINEERS
 BOSTON MASSACHUSETTS

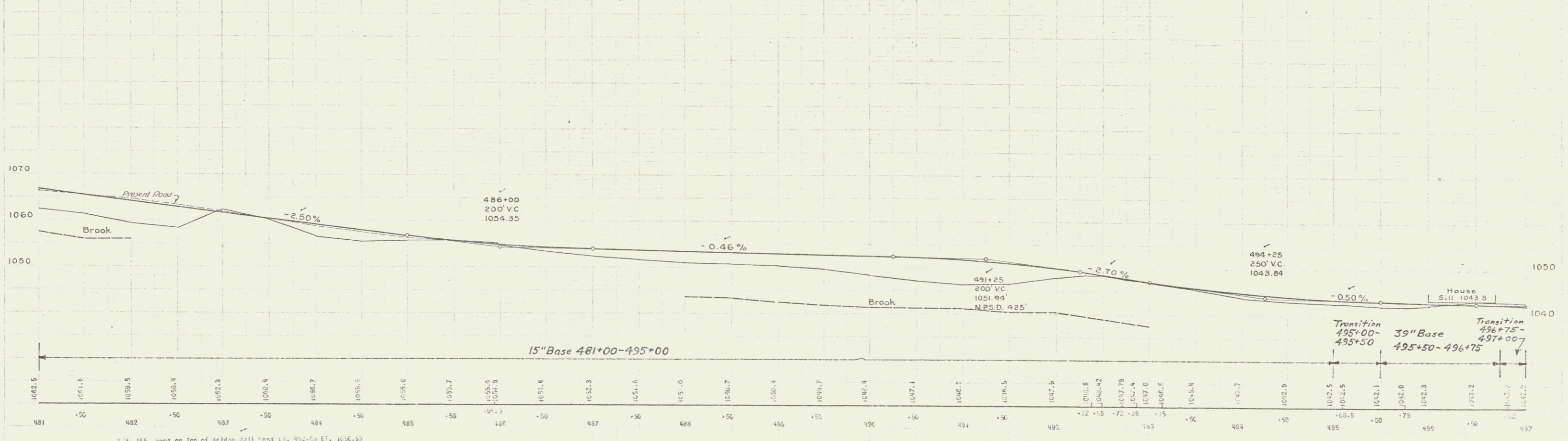
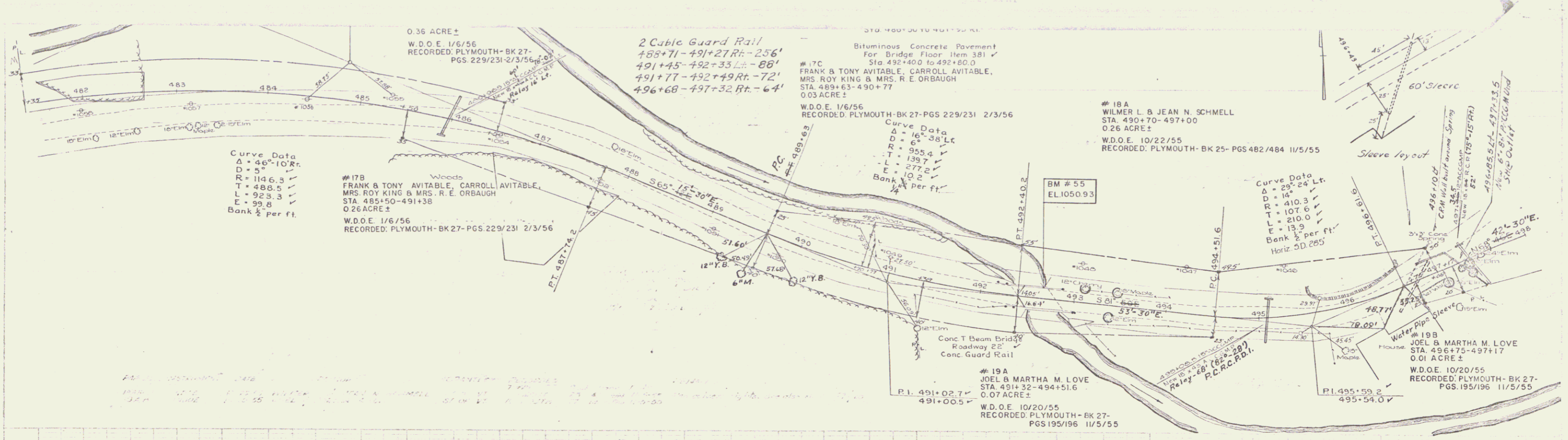
New Posts - Resetting Cable
492+49 - 493+07 Lt - 4

P.I. 483+39.4
482+85.7

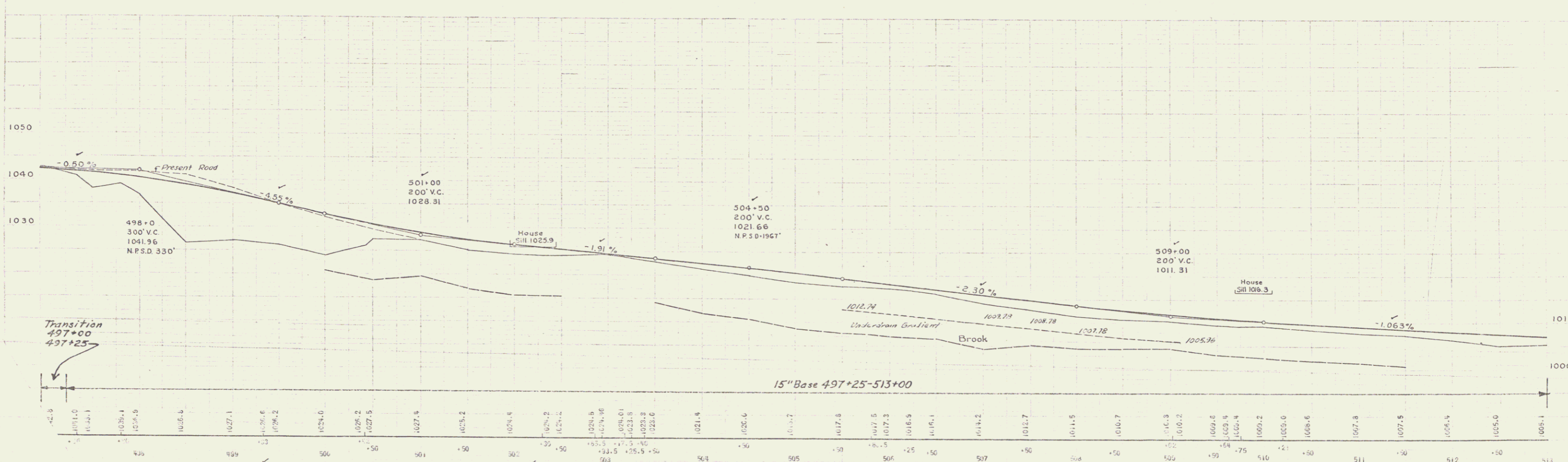
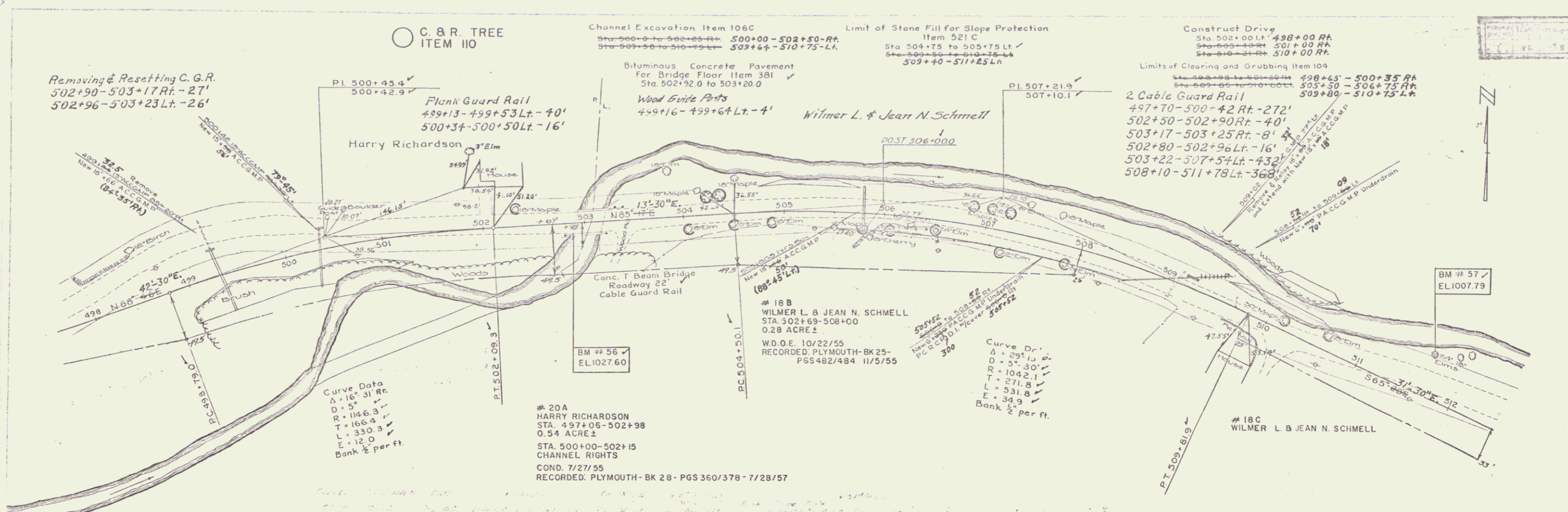
Removing & Resetting C.G.R. C. & R. TREE
ITEM 110
492+33 - 492+75 Lt - 42'
492+49 - 493+07 Rt - 58'

Limits of Stone Fill for Slope Protection
Item 521C
Construct Drive
Sta. 496+40 Rt - 4.87 x 25' Lt

Removal & Disposal of G.R.
496+75 - 497+15 Rt - 40'



Sheet 355 - sheet on top of Bridge wall from L.L. 492+50 Et. 1056.55



Station	Elevation	Notes
497+00	1041.96	N.P.S.D. 330'
498+00	1041.96	N.P.S.D. 330'
499+00	1038.1	
500+00	1034.0	
501+00	1028.31	200' V.C.
502+00	1024.4	
503+00	1020.4	
504+00	1016.5	
504+50	1021.66	N.P.S.D. 1967'
505+00	1017.3	
506+00	1013.3	
507+00	1009.3	
508+00	1005.3	
509+00	1001.31	200' V.C.
510+00	1000.0	
511+00	1000.5	
512+00	1000.4	
513+00	1000.1	

PLYMOUTH SHEET 27
 THE CLARKE SON ENGINEERING CO., INC.
 CONSULTING ENGINEERS
 BOSTON MASSACHUSETTS

2 Cable Guard Rail
 515+50-519+66 Lt - 416'
 520+36-520+60 Lt - 24'
 520+32-521+48 Rt - 96'
 524+83-528+00 Rt - 317'

Construct Drive
 Sta 522+00 Lt
 Sta 522+00 Rt
 C & R TREE
 ITEM 110
 Removing & Resetting C.G.R.
 519+67-520+36 Lt - 69'
 519+27-520+52 Rt - 125'

Limits of Stone Fill for Slope Protection
 Item 521 C
 Sta 515+75 to 516+75 Lt
 Sta 526+00-528+00 Rt
 Removal & Disposal of G.R.
 524+80-526+68 Rt - 188'

#21D
 EDWIN R. & BEULAH N. PUTNAM
 STA 525+08-526+43
 0.25 ACRE ±
 W.D.O.E. 8/24/55
 RECORDED: PLYMOUTH-BK27-
 PGS 251/252 9/10/56

#21B
 EDWIN R. & BEULAH N. PUTNAM
 STA 525+08-526+43
 0.04 ACRE ±
 W.D.O.E. 10/20/55
 RECORDED: PLYMOUTH-BK 27-
 PGS 197/198 11/5/55

#22B
 ARNOLD J. & SHIRLEY M. SAILER
 STA 526+43-528+00
 0.09 ACRE ±
 W.D.O.E. 10/22/55
 RECORDED: PLYMOUTH-BK 27- PGS 199/200
 11/5/55

#18D
 WILMER L. & JEAN N. SCHMELL
 STA 515+50-520+00
 0.10 ACRE ±
 W.D.O.E. 10/22/55
 RECORDED: PLYMOUTH-BK 25-PGS 482/484
 11/5/55

Curve Data
 Δ = 28° 06' 47"
 D = 75'
 R = 819.0
 T = 205.0
 L = 401.4
 E = 25.3
 Bank 2 per ft

Wood Guide Posts
 522+91-524+61 Rt - 11
 #22A
 ARNOLD J. & SHIRLEY M. SAILER
 STA 519+97-525+09
 0.12 ACRE ±
 W.D.O.E. 10/22/55
 RECORDED: PLYMOUTH-BK 27-
 PGS 199-200 11/5/55

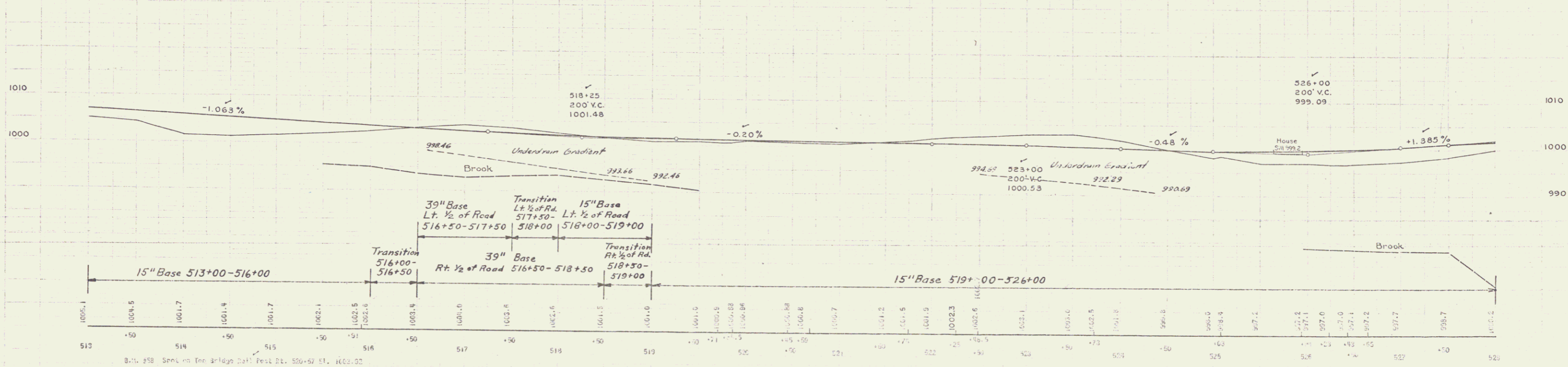
Curve Data
 Δ = 25° 17' 12"
 D = 65'
 R = 955.4
 T = 170.9
 L = 338.1
 E = 15.2
 Bank 2 per ft

#18C
 WILMER L. & JEAN N. SCHMELL
 STA 509+81.9-518+50
 0.39 ACRE ±
 STA 509+80-510+80
 CULVERT RIGHTS
 W.D.O.E. 10/22/55
 RECORDED: PLYMOUTH-BK 25-PGS 482/484 11/5/55

#21A
 EDWIN R. & BEULAH N. PUTNAM
 STA 518+50-527+66
 0.45 ACRE ±
 W.D.O.E. 10/20/55
 RECORDED: PLYMOUTH-BK 27-
 PGS 197/198 11/5/55

BM # 58
 EL. 100.392

Plank Guard Rail
 524+96-525+20 Lt - 24'



Sta. 528+00 Lt.
533+00 Rt.
534+30 Rt.

Construct Drive
Sta. 528+00 Lt.
533+00 Rt.
534+30 Rt.

Construct Approach
Sta. 528+20 Lt.

C. & R. TREE
ITEM 110

Limits of Stone Fill for Slope Protection
Item 921C
Sta. 526+25 to 528+25 Rt.
Sta. 536+75 to 539+75 Rt.
529+00 - 528+35 Rt.

Channel Excavation Item 106A
Sta. 536+75 to 539+25 Rt.
534+70 - 539+30 Rt.

Limits of Clearing and Grubbing Item 104
Sta. 534+60 to 538+35 Rt.
Sta. 536+25 - 537+00 Rt.
Sta. 535+00 - 538+30 Lt.
Sta. 536+75 - 539+00 Rt.

2 Cable Guard Rail
528+00 - 530+03 Rt. - 203'
530+47 - 533+19 Rt. - 272'
536+10 - 540+02 Rt. - 392'

Curve Data
Δ=67°09' Lt.
D=10°
R=573.7
T=300.0
L=671.5
E=114.9
Bank 1/2" per ft.

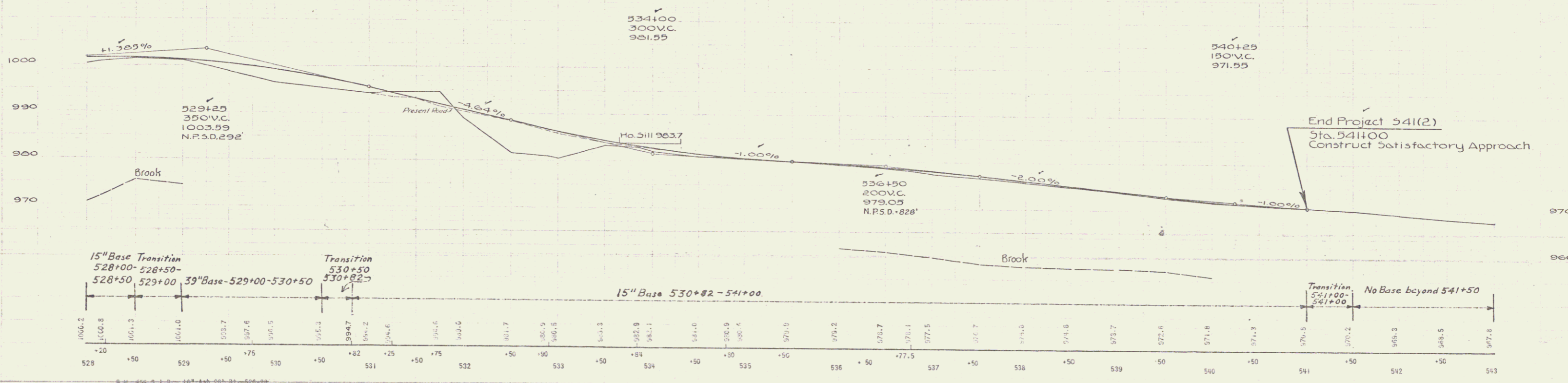
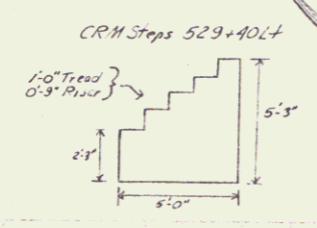
21C
EDWIN R. & BEULAH N. PUTNAM
Sta. 534+50 - 538+90
0.35 ACRE ±
W.D.O.E. 10/20/55
RECORDED: PLYMOUTH - BK 27 - PGS 197/198 - 11/5/55

23 B
HERBERT C. RICHARDSON
Sta. 529+75 - 532+09
0.04 ACRE ±
W.D.O.E. 10/22/55
RECORDED: PLYMOUTH - BK 27 - PGS 203/204 11/5/55

23 A
HERBERT C. RICHARDSON
Sta. 527+66 - 530+97
0.16 ACRE ±
W.D.O.E. 10/22/55
RECORDED: PLYMOUTH - BK 27 - PGS 203/204 11/5/55

20B
HARRY RICHARDSON
Sta. 530+97 - 531+90
0.09 ACRE ±
COND. 7/27/55
RECORDED: PLYMOUTH - BK 28 - PGS 360-378 7/28/55

24
LYMAN B. LUVIA MAY GRIGGS
Sta. 531+90 - 540+07.7
0.81 ACRE ±
Sta. 540 ±
CULVERT RIGHTS
W.D.O.E. 10/22/55
RECORDED: PLYMOUTH - BK 27 - PGS 205/206



PLYMOUTH SHEET 29
THE CLARKESON ENGINEERING CO., INC.
CONSULTING ENGINEERS
BOSTON MASSACHUSETTS