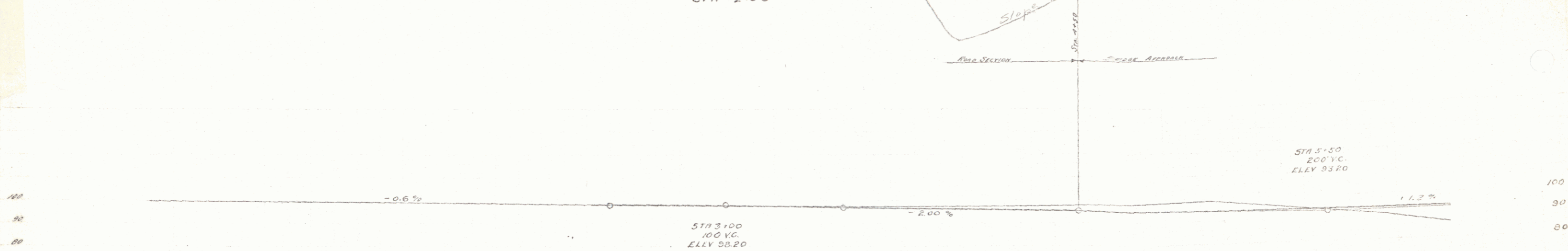
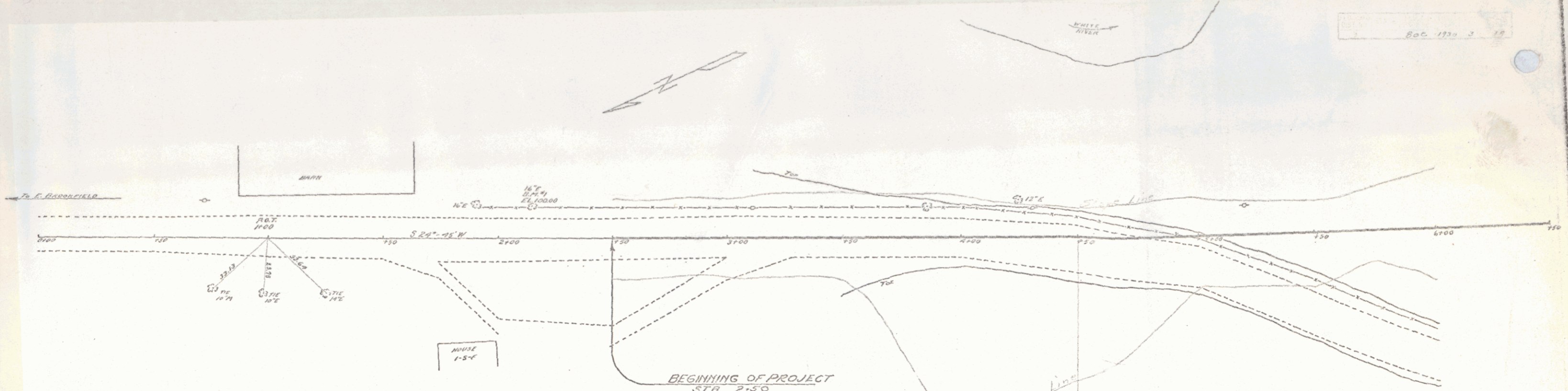


Doc 1770 J 10



B.M. No. 1 - 16.5m left of Sta 2+15 - Elev 100.00

987	984	986	987	987	987	986	985	986	987	985	984	983	982	981	980
150	150	150	150	150	150	150	150	150	150	150	150	150	150	150	150
3100	3100	3100	3100	3100	3100	3100	3100	3100	3100	3100	3100	3100	3100	3100	3100

NORTH RANDOLPH BRIDGE
OVER
SECOND BRANCH WHITE RIVER
F.A.P. 800