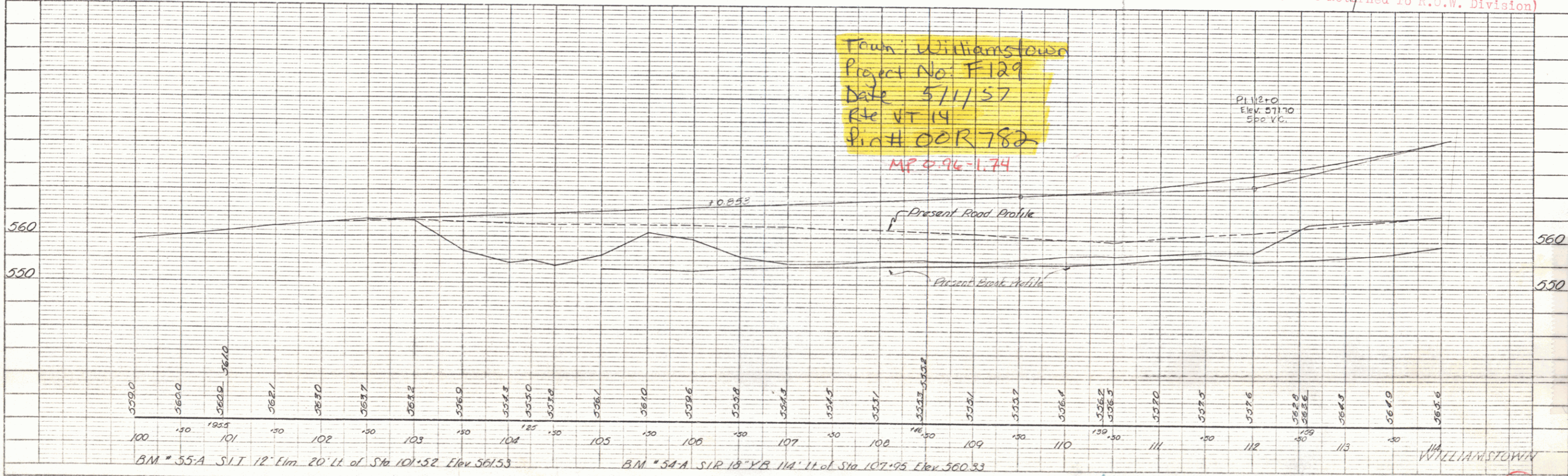
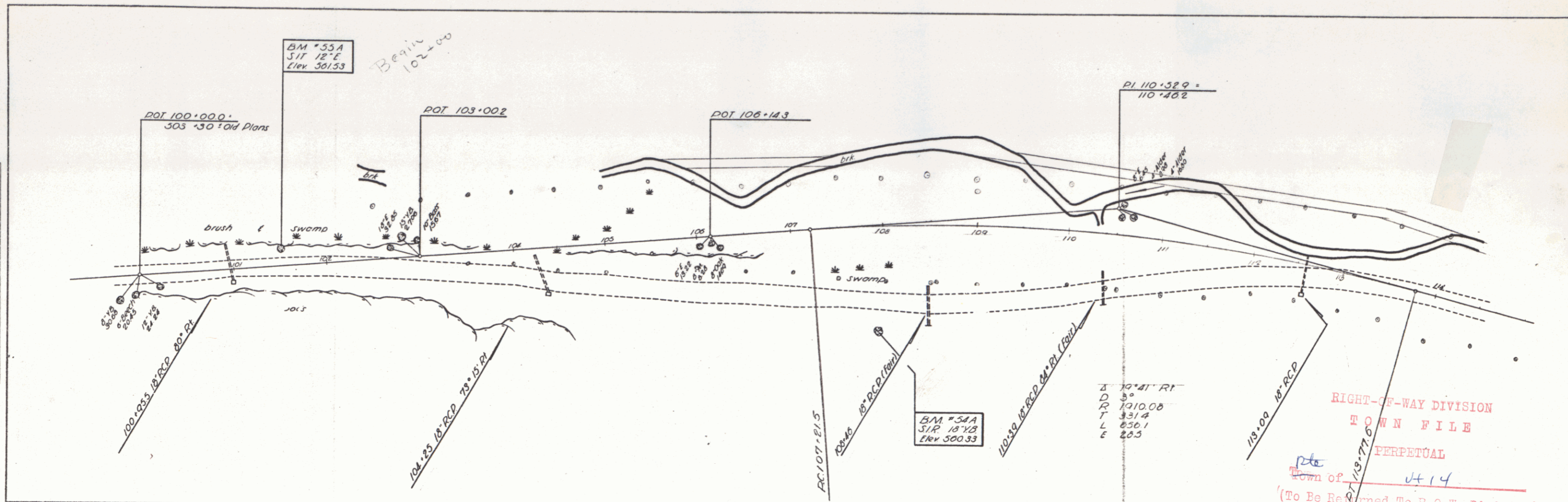


PLAN
 DATE 5/11/57
 DRAWN BY J. W. [unclear]
 CHECKED BY [unclear]
 IN CHARGE [unclear]

PROFILE
 DATE 5/11/57
 DRAWN BY J. W. [unclear]
 CHECKED BY [unclear]
 IN CHARGE [unclear]



Town: Williamstown
 Project No: F129
 Date: 5/11/57
 Rte: VT 14
 Plan #: 00R782
 MP 0.96-1.74

RIGHT-OF-WAY DIVISION
 TOWN FILE
 PERPETUAL
 Town of [unclear] VT 14
 (To Be Returned To R.O.W. Division)

PLATE 1 - PLAN - PROFILE - P. & H. E. STANDARD
 REPRODUCED BY THE ENGINEERING SOCIETY OF NEW YORK
 H. & E. CO. INC. 348-15

Foot of Gully Rte 14

WILLIAMSTOWN
 SHEET 21

PLAN
 DRAWN BY J. J. JEWETT
 DATE 1/10/37
 CHECKED BY C. H. J. JEWETT
 DATE 1/10/37

PROFILE
 DRAWN BY J. J. JEWETT
 DATE 1/10/37
 CHECKED BY C. H. J. JEWETT
 DATE 1/10/37

