

CONSTRUCT DRIVES
 Lt. Rt.
 217+00-
 215+25
 215+00

CONSTRUCT APPROACHES
 Lt. Rt.
 209+30

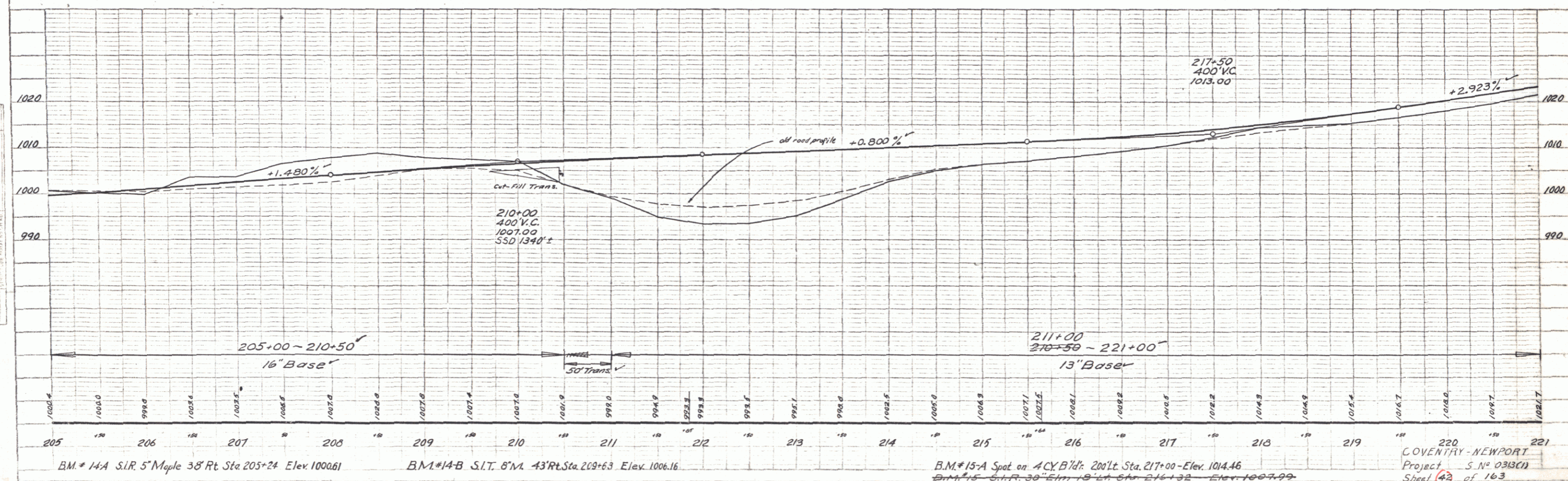
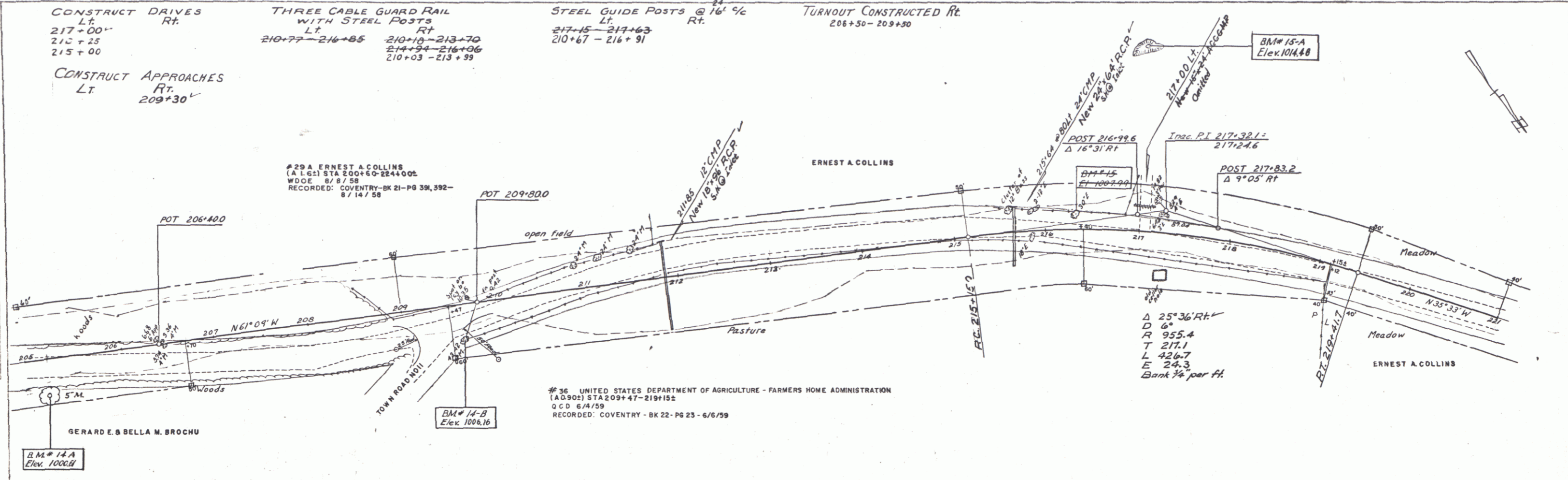
THREE CABLE GUARD RAIL
 WITH STEEL POSTS
 Lt. Rt.
 210+77-216+85 210+10-213+70
 214+94-216+86
 210+03-213+99

STEEL GUIDE POSTS @ 16' %
 Lt. Rt.
 217+15-217+63
 210+67-216+91

TURNOUT CONSTRUCTED Rt.
 206+50-209+50

PLAN
 SHEET NO. 15-B
 DATE 8/1/59
 PROJECT
 DRAWN BY
 CHECKED BY
 APPROVED BY

PROFILE
 SHEET NO. 15-B
 DATE 8/1/59
 PROJECT
 DRAWN BY
 CHECKED BY
 APPROVED BY



COVENTRY-NEWPORT
 Project S. No. 0313(1)
 Sheet 43 of 163