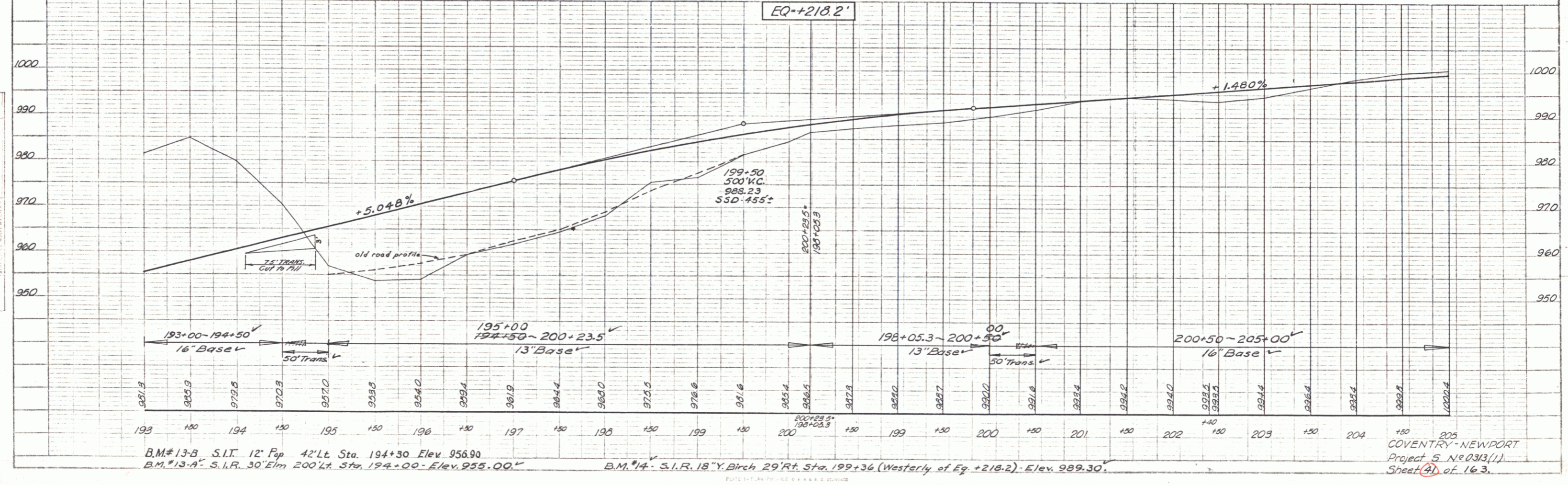
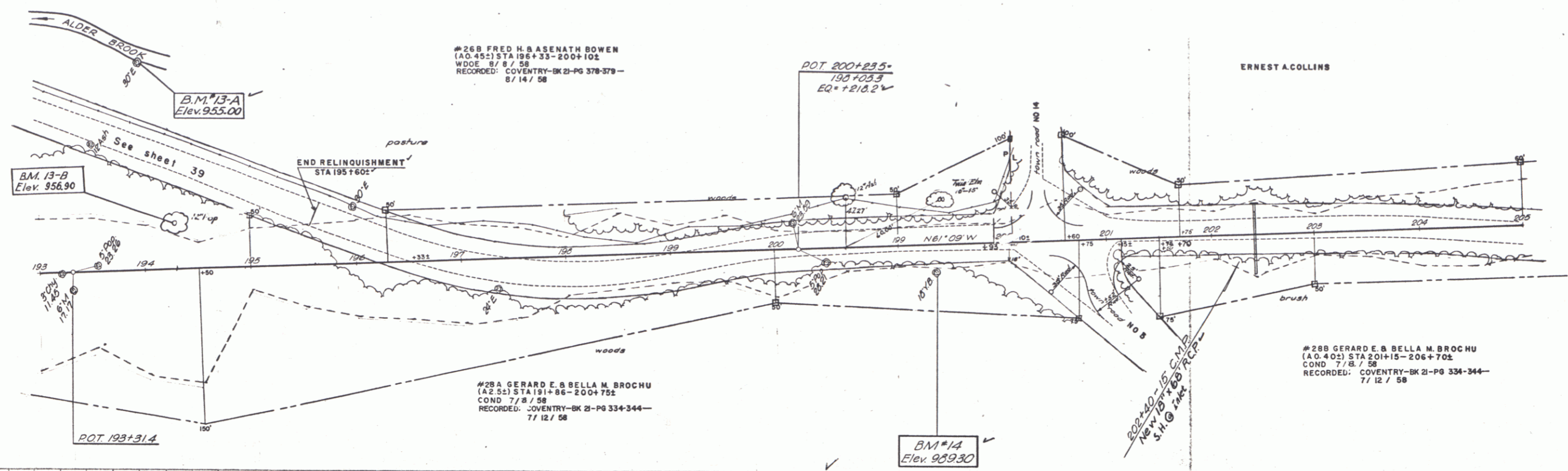


THREE-CABLE GUARD RAIL WITH STEEL POSTS
 LT 194+25-196+84 RT 195+20-199+36
 CONSTRUCT APPROACHES
 LT 200+50 RT 201+00
 PLAN - GUARD RAIL WITH PRESERVATIVE TREATMENT
 LT 202+24-202+56 RT 202+24-202+56
 STEEL GUIDE POSTS
 LT 195+07-196+99 RT 195+22-199+06



B.M. #13-B S.I.T. 12' Pop 42' Lt. Sta. 194+30 Elev. 956.90
 B.M. #13-A S.I.R. 30' Elm 200' Lt. Sta. 194+00 - Elev. 955.00
 B.M. #14 S.I.R. 18' Y. Birch 29' Rt. Sta. 199+36 (Westerly of Eq. +218.2) - Elev. 989.30
 COVENTRY-NEWPORT
 Project 5 No. 0313(1)
 Sheet 41 of 163

PLAN
 DATE 11/28/57
 CHECKED BY C.E.H.
 DRAWN BY [Signature]

PROFILE
 DATE 11/28/57
 CHECKED BY C.E.H.
 DRAWN BY [Signature]