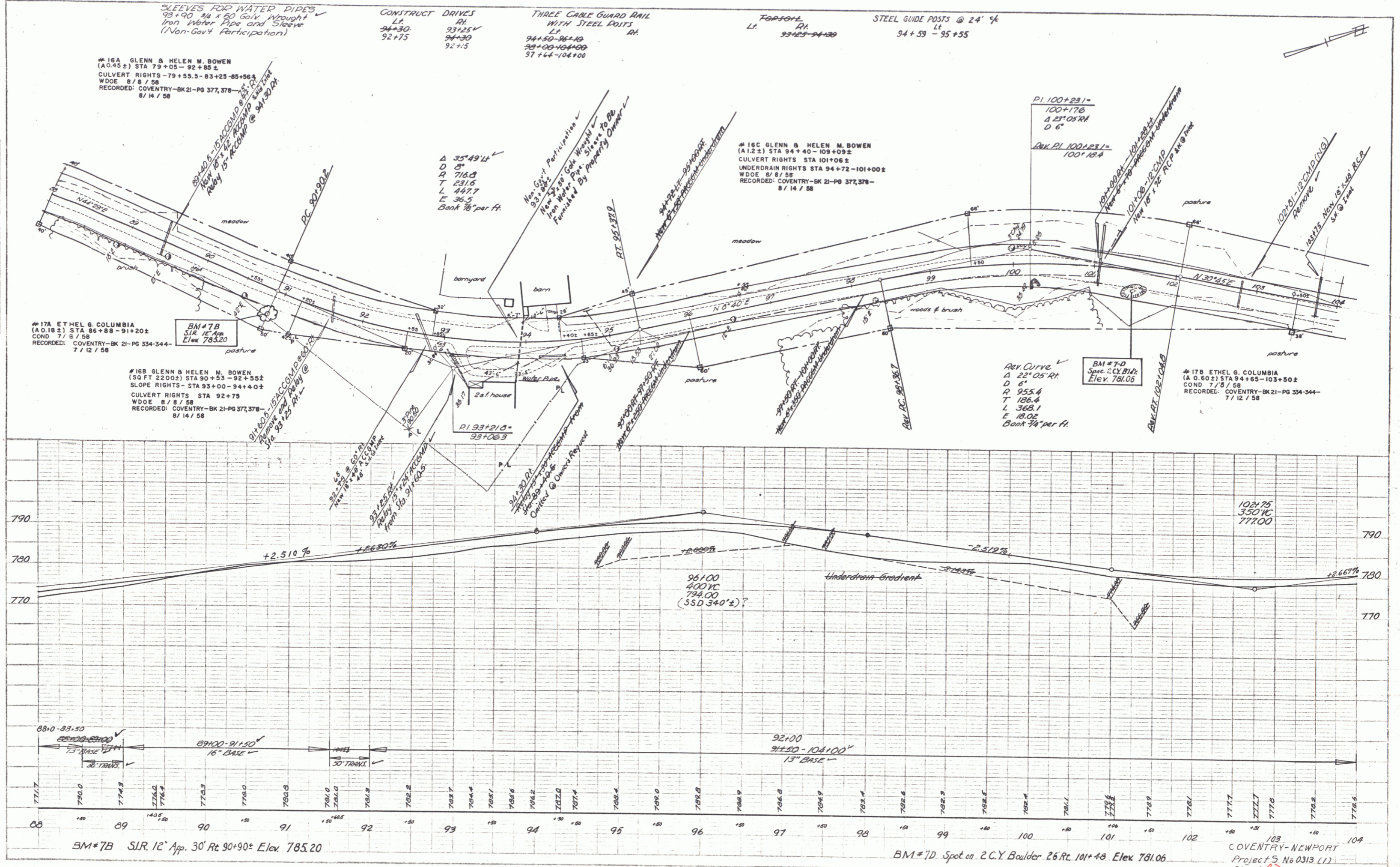


PLAN SHEET
 DATE: 11/28/58
 DRAWN BY: C.E.H.
 CHECKED BY: R.

PROFILE SHEET
 DATE: 11-28-58
 DRAWN BY: R. HUGHES
 CHECKED BY: R.



SLEEVES FOR WATER PIPES
 93+90 3/4 x 30 GALV. Wrought
 Iron Water Pipe 600 Sleeve
 (Non-Gov't Participation)

CONSTRUCT DRAIVES
 LT. 94+30
 RH. 93+25
 92+75

THREE CABLE GUARD RAIL
 WITH STEEL POSTS
 LT. 94+50-96+10
 RH. 95+00-104+00
 97+64-104+00

TOPSOIL
 LT. 93+25-94+30

STEEL GUIDE POSTS @ 24' 1/2"
 LT. 94+59 - 95+55

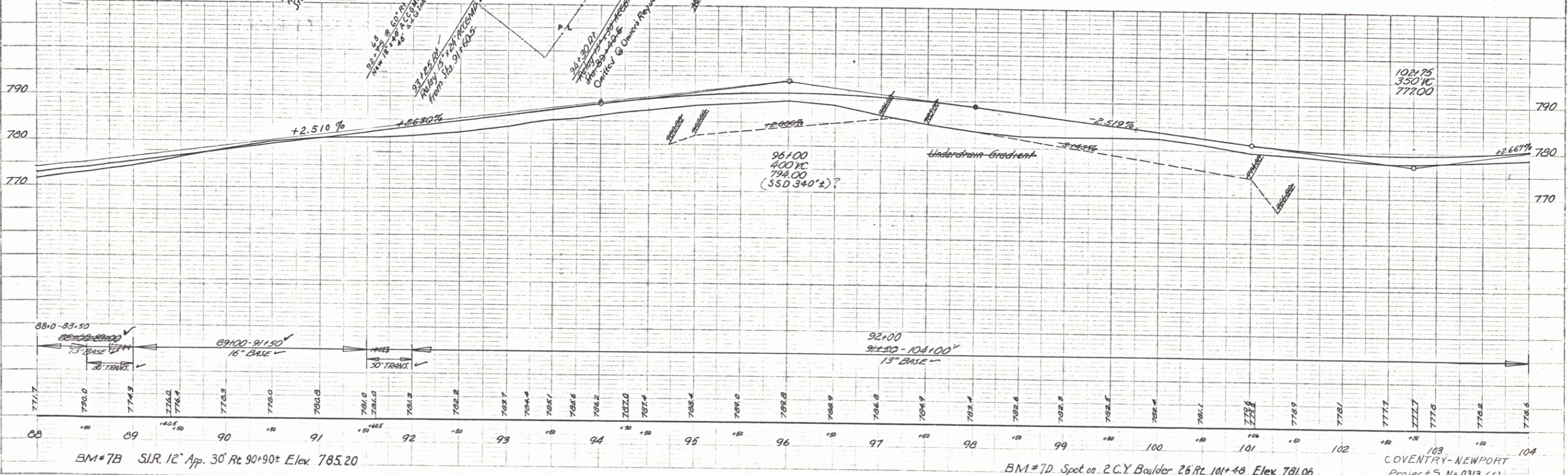
#16A GLENN & HELEN M. BOWEN
 (A.O. 18 ±) STA 79+05 - 92+85 ±
 CULVERT RIGHTS - 79+55.5 - 83+25 - 85+56 ±
 WDOE 8/8/58
 RECORDED: COVENTRY-BK 21-PG 377,378 -
 8/14/58

#17A ETHEL G. COLUMBIA
 (A.O. 18 ±) STA 86+88 - 91+20 ±
 COND. 7/8/58
 RECORDED: COVENTRY-BK 21-PG 334-344 -
 7/12/58

#16B GLENN & HELEN M. BOWEN
 (90 FT 2200 ±) STA 90+53 - 92+55 ±
 SLOPE RIGHTS - STA 93+00 - 94+40 ±
 CULVERT RIGHTS - STA 92+75
 WDOE 8/8/58
 RECORDED: COVENTRY-BK 21-PG 377,378 -
 8/14/58

#16C GLENN & HELEN M. BOWEN
 (A.I. 2 ±) STA 94+40 - 109+09 ±
 CULVERT RIGHTS - STA 101+06 ±
 UNDERDRAIN RIGHTS STA 94+72 - 101+00 ±
 WDOE 8/8/58
 RECORDED: COVENTRY-BK 21-PG 377,378 -
 8/14/58

#17B ETHEL G. COLUMBIA
 (A.O. 60 ±) STA 94+65 - 103+50 ±
 COND. 7/8/58
 RECORDED: COVENTRY-BK 21-PG 334-344 -
 7/12/58



BM #7B S.I.R. 12" App. 30' Rt. 90+90 ± Elev. 785.20

BM #7D Spot on C.C.Y. Boulder 26 Rt. 101+48 Elev. 781.06

103
 COVENTRY - NEWPORT
 Project 5 No 0313 (1)
 Sheet 32 of 163