

STEEL GUIDE POSTS 24" x 6"
 Lt. 41+65-43+00
 Rt. 42+11-43+00

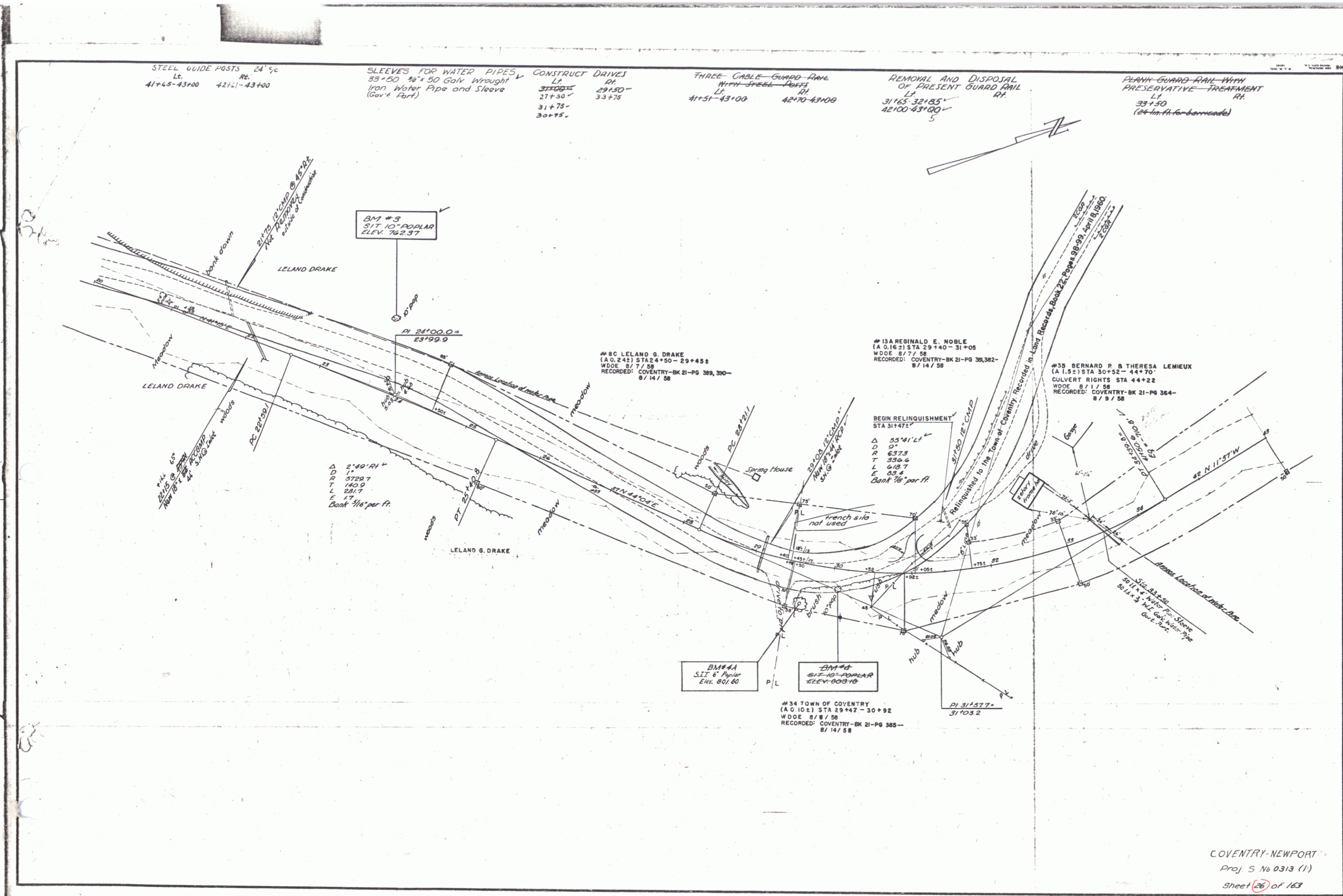
SLEEVES FOR WATER PIPES
 53+50 1/2" x 50 Galn Wrought
 Iron Water Pipe and Sleeve
 (Gov't Part)

CONSTRUCT DRIVES
 Lt. 31+30-31+75
 Rt. 29+50-33+75
 30+75

THREE-CABLE-GUARD-RAIL
 WITH-STEEL-POSTS
 Lt. 41+51-43+00
 Rt. 42+70-43+00

REMOVAL AND DISPOSAL
 OF PRESENT GUARD RAIL
 Lt. 31+65-33+85
 Rt. 42+00-43+00

PLANK-GUARD-RAIL-WITH
 PRESERVATIVE-TREATMENT
 Lt. 33+50
 Rt. (24-in. ft. for barricade)



BM #3
 SIT 10" PAPER
 ELEV. 762.37

#8C LELAND G. DRAKE
 (A.O. 242) STA 24+50-29+45.2
 W.D.O.E. 8/7/58
 RECORDED: COVENTRY-BK 21-PG 389, 390-
 8/14/58

#13A REGINALD E. NOBLE
 (A.O. 162) STA 29+40-31+05
 W.D.O.E. 8/7/58
 RECORDED: COVENTRY-BK 21-PG 388, 382-
 8/14/58

#35 BERNARD P. & THERESA LEMIEUX
 (A.I.S.1) STA 30+52-44+70
 CULVERT RIGHTS STA 44+22
 W.D.O.E. 8/11/58
 RECORDED: COVENTRY-BK 21-PG 364-
 8/9/58

Δ 2°40' RH
 D 11.0
 R 5720.7
 T 140.9
 L 281.7
 E 11.5
 Bank 7/16' per ft.

BEGIN RELINQUISHMENT
 STA 31+47.1
 Δ 55°41' L
 D 97
 R 6373
 T 536.6
 L 618.7
 E 23.4
 Bank 7/16' per ft.

BM #4A
 SIT 6" PAPER
 Elev. 801.60

BM #4
 SIT 10" PAPER
 ELEV. 803.16

#34 TOWN OF COVENTRY
 (A.O. 102) STA 29+44.7-30+92
 W.D.O.E. 8/8/58
 RECORDED: COVENTRY-BK 21-PG 385-
 8/14/58

DI 31+57.7
 31+03.2

COVENTRY-NEWPORT
 Proj. S No 0313 (1)
 Sheet 26 of 163