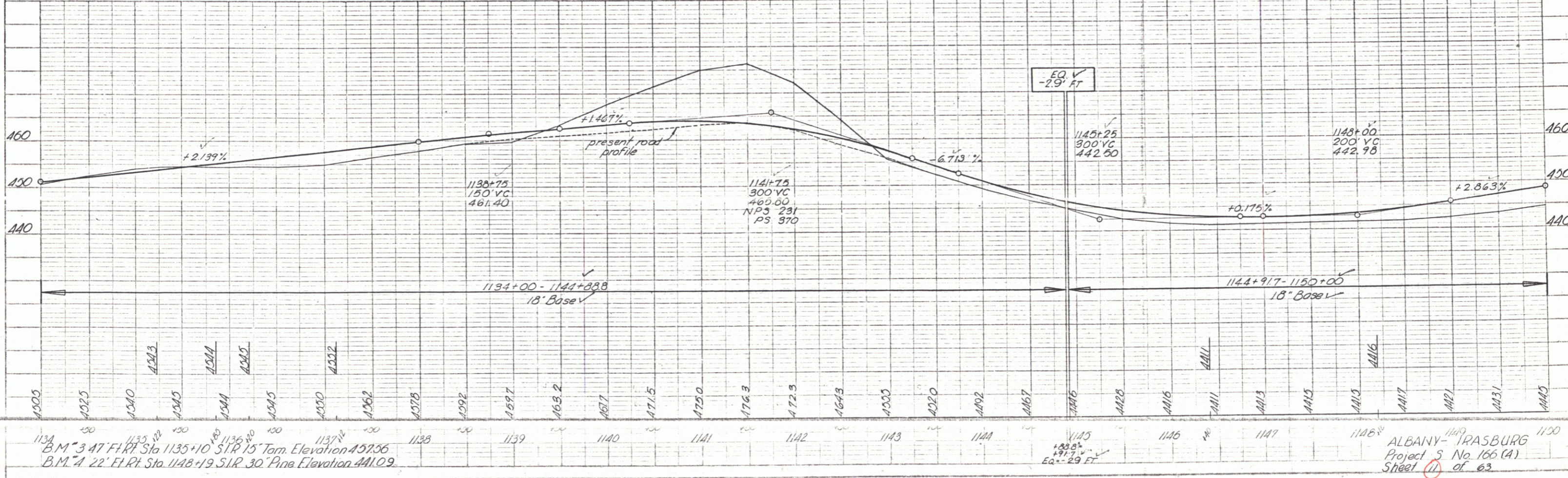
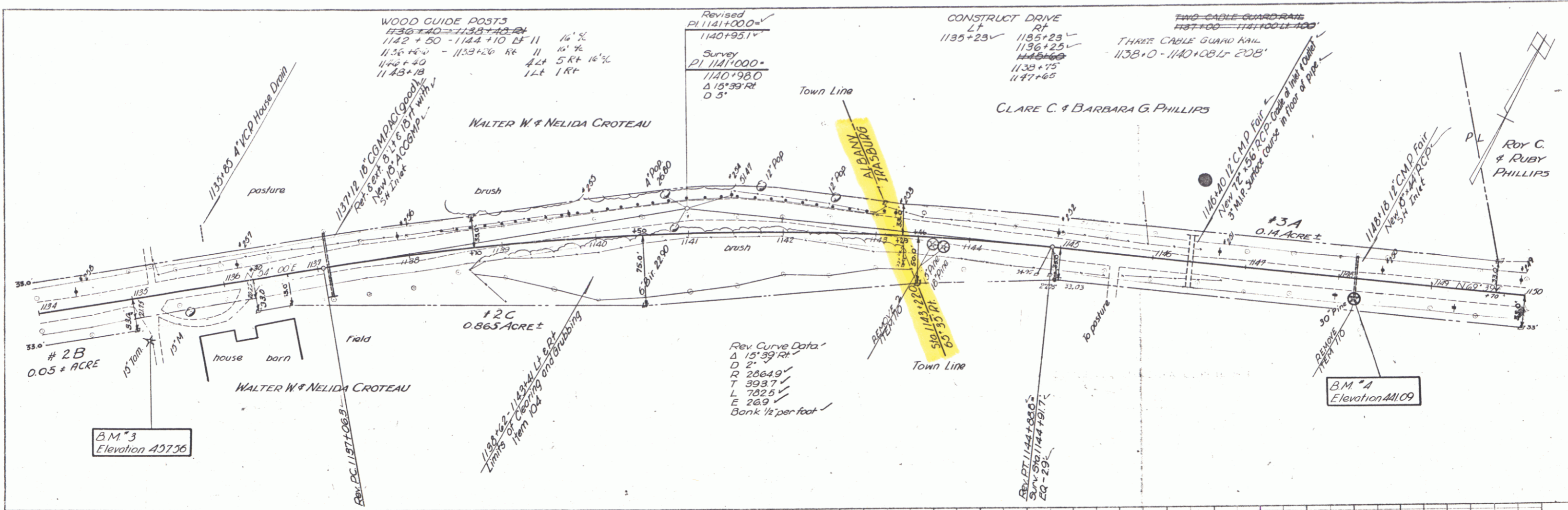


PLAN
 DATE: 11-30-1952
 SHEET NO. 1166 (A)
 PROJECT NO. 1066 (A)
 DRAWN BY: SPENCER POLMER
 CHECKED BY: [Signature]

PROFILE
 DATE: 11-30-1952
 SHEET NO. 1166 (A)
 PROJECT NO. 1066 (A)
 DRAWN BY: SPENCER POLMER
 CHECKED BY: [Signature]



B.M. 3 47 FT. Sta. 1135+10 S.I.R. 15" Tom. Elevation 457.56
 B.M. 4 22 FT. Sta. 1148+19 S.I.R. 30" Pine E. Elevation 441.09

ALBANY-IRASBURG
 Project No. 1066 (A)
 Sheet 1166 of 63

PLATE 1 - PLAN (TOP) LT. U.P.A. & R.E. STANDARD
 ADAPTED & REVISED BY NEW YORK
 STATE ENGINEERS ASSOCIATION
 NEW YORK STATE ENGINEERS ASSOCIATION