

INDEX OF SHEETS

SHEET NO.	TITLE PAGE
1	TITLE PAGE
2	TYPICAL CROSS-SECTION OF IMPROVEMENT GRADING, BASE & DRAINAGE
3	BANKING AND WIDENING TABLES
4	PLAN AND PROFILE SHEET
5	STANDARD STRUCTURE SHEET 520; PIPE CULVERTS
6	STANDARD STRUCTURE SHEET 540; BARRICADES, SIGNS & LIGHTS
7	"
8-10	CROSS SECTIONS

Standard Structure Sheet 520 approved by the Chief Engineer on July 16, 1933

STATE OF VERMONT
STATE HIGHWAY DEPARTMENT

PLAN AND PROFILE OF PROPOSED
STATE HIGHWAY
U. S. WORKS PROGRAM STATE SECONDARY PROJECT (W.P.S.S. 166B)

TOWN OF ALBANY Pin# 00R 770

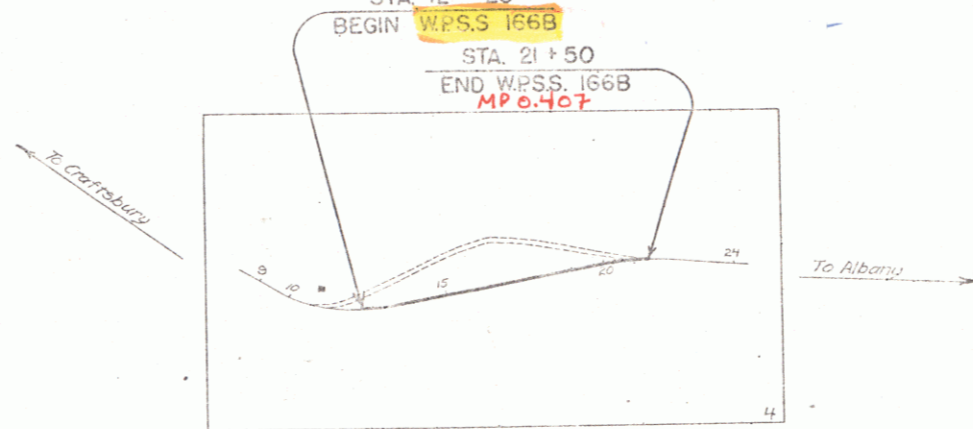
HARDWICK-NEWPORT ROAD

BEGINNING AT A POINT 1225 FT. NORTH OF THE CRAFTSBURY-ALBANY TOWN LINE, AND EXTENDING NORTHERLY 0.175 MILES.

LENGTH OF PROJECT 925 FT. = 0.175 MILES

RECORD PLANS

M.P.O. 232
STA. 12 + 25
BEGIN W.P.S.S. 166B
STA. 21 + 50
END W.P.S.S. 166B
M.P.O. 407



RIGHT-OF-WAY DIVISION
TOWN FILE

PERPETUAL

Plc
Town of ALBANY
(To Be Returned To R.O.W. Division)

APPROVED: October 24, 1935
W. H. August
COMMISSIONER OF HIGHWAYS
SUBMITTED BY ORDER OF THE STATE HIGHWAY BOARD

CONVENTIONAL SIGNS

COUNTY LINE	GROUND ELEVATION	DATE	LINE
TOWN LINE	GRADE ELEVATION	DATE	LINE
FENCE LINE			
STONE WALL			
UNFENCED PROPERTY			
GUARD RAIL			
TRAVELED WAY			
RAILROAD			
RETAINING WALL			
CENTER LINE			
SURVEY LINE			
CULVERT			
DROP INLET			
TROLLEY POLE			
POWER POLE			
TELEPHONE POLE			
TREES			
HEDGE			

CURVE DATA

DEFLECTION ANGLE	Δ
DEGREE OF CURVE	D
RADIUS OF CURVE	R
TANGENT DISTANCE	T
LENGTH OF CURVE	L
EXTERNAL DISTANCE	E
POINT OF INTERSECTION	P. I.
POINT OF CURVE	P. C.
POINT OF TANGENT	P. T.
POINT ON TANGENT	P. O. T.

TITLE	1" = 300'
TYPICAL	1" = 21'
PLAN	1" = 50'
PROFILE	1" = 10'
CROSS-SECTION	1" = 5'

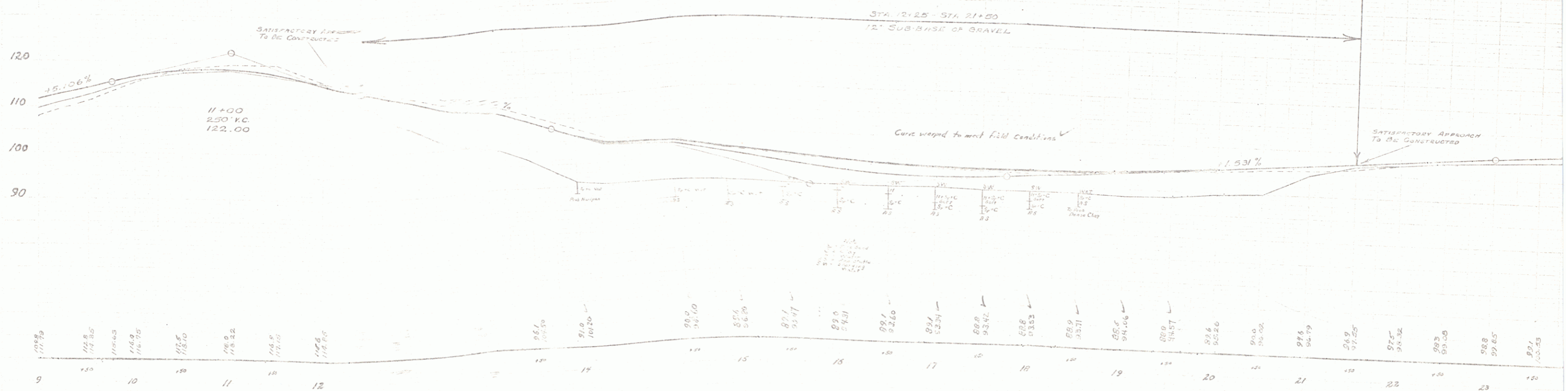
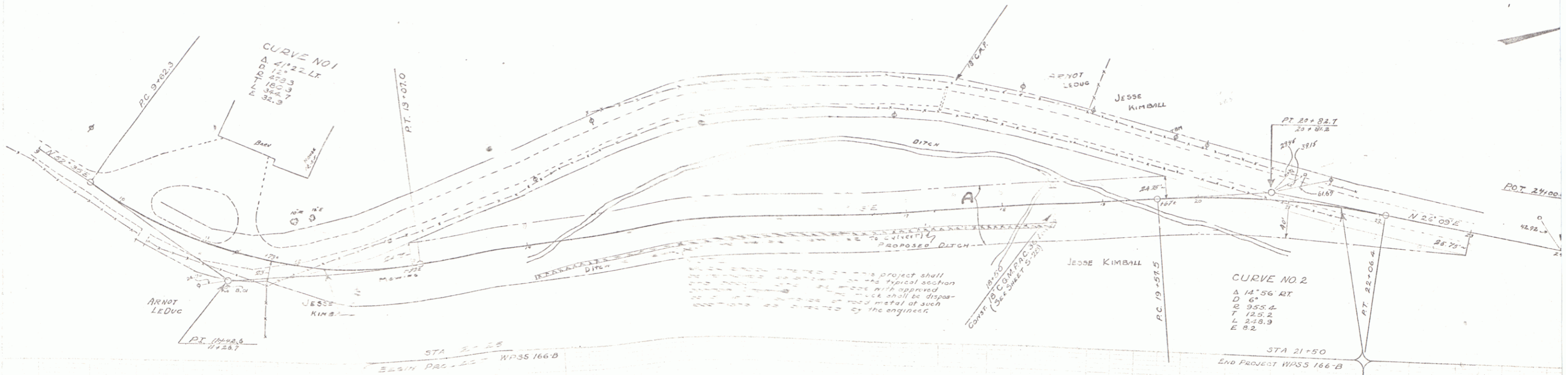
These plans are subject to such revisions as may be required by the Bureau of Public Roads or the Commissioner of Highways.
Construction is to be carried on in accordance with the plans and Standard Road and Bridge Specifications of 1930, including all subsequent approved revisions and such revised specifications and special provisions as are submitted with the plans.
Attention of the contractor is called to the fact that the State Highway Board reserves the right to extend this project of the same contract prices, said cost of extension not to exceed 25% of the amount of the contract.

Correct October 24, 1935
W. H. August
DIRECTOR BUREAU OF PUBLIC ROADS

SERIES W.P.S.S. NO. 166B FILED
SHEET 0 OF 10

DIST #9 PLANS

Parcel	Kind of Instrument	Date of Instrument	Grantor	Grantee	Recorded	Remarks
A	Q.C.D.	12-2-35	Jesse Kimball	Staff	22 168	12-35



SHEET 5