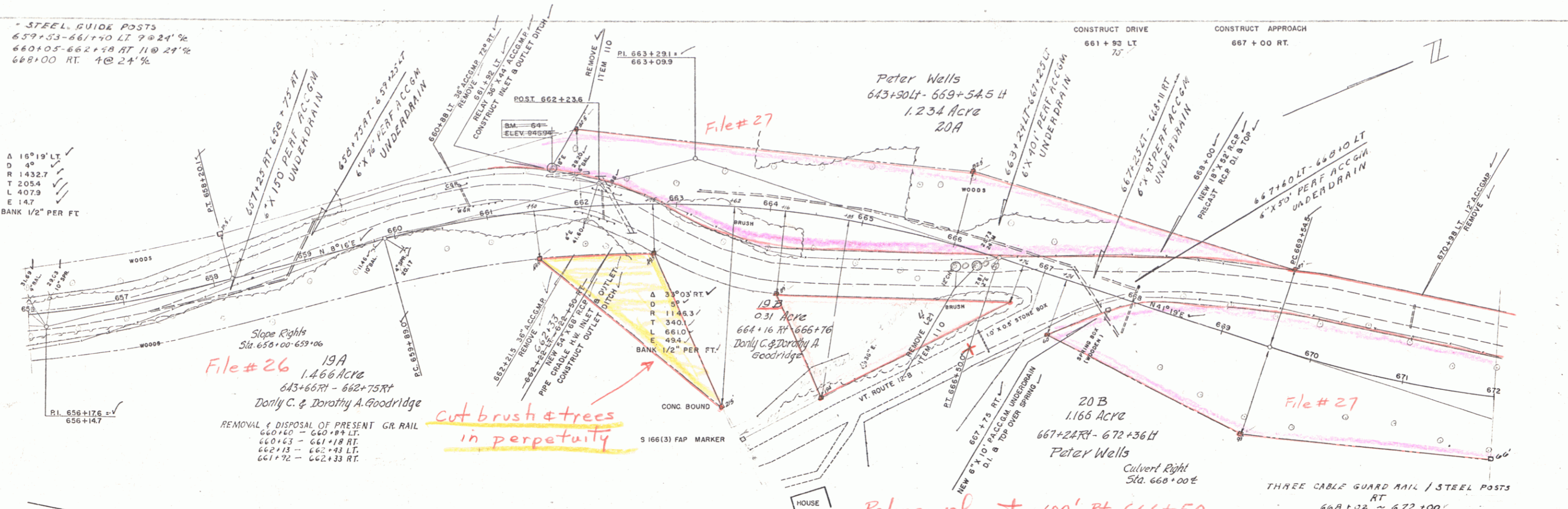


STEEL GUIDE POSTS
 659+53-661+70 LT 7@24'
 660+05-662+58 RT 11@24'
 668+00 RT 4@24'

Δ 16°19' LT
 D 9°
 R 1432.7
 T 205.4
 L 407.9
 E 14.7
 BANK 1/2" PER FT

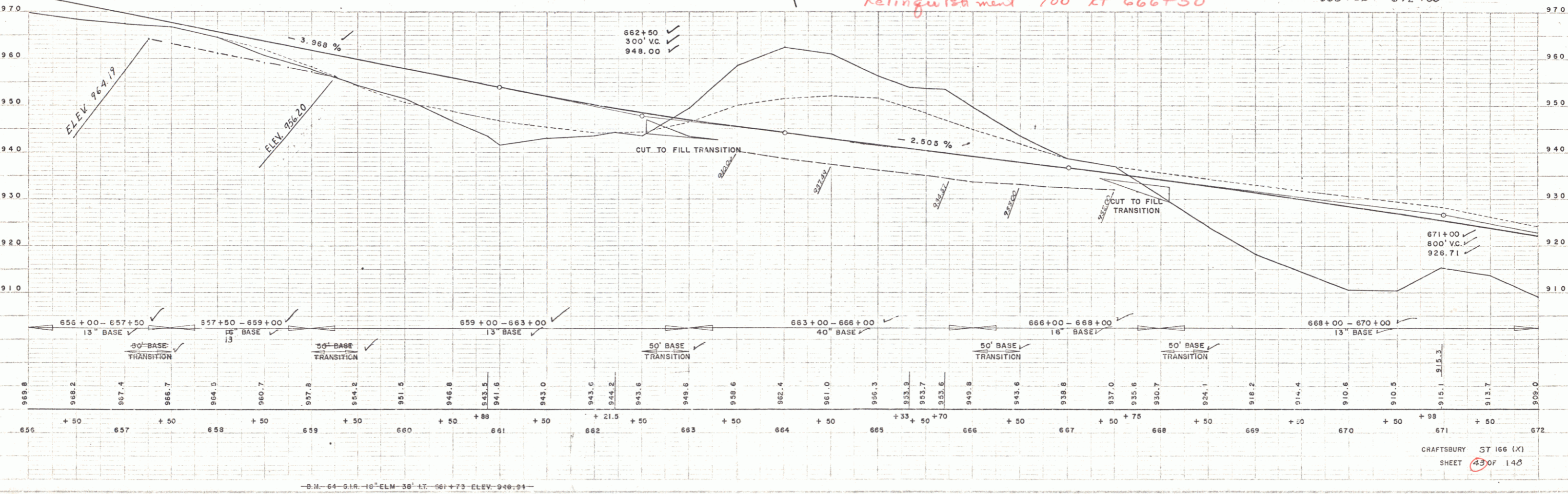
SPENCER
 WEBSTER-MARTIN INC.
 11-28



File # 26
 19A
 1.466 Acre
 643+66 RT - 662+75 RT
 Dorothy C. & Dorothy A. Goodridge
 REMOVAL & DISPOSAL OF PRESENT GR. RAIL
 660+60 - 660+77 LT
 660+63 - 661+18 RT
 662+13 - 662+43 LT
 661+72 - 662+33 RT

File # 27
 Cut brush & trees
 in perpetuity

File # 27
 Relinquishment 100' RT 666+50



SPENCER
 WEBSTER-MARTIN INC.
 11-28

CRAFTSBURY ST 166 (X)
 SHEET 43 OF 140