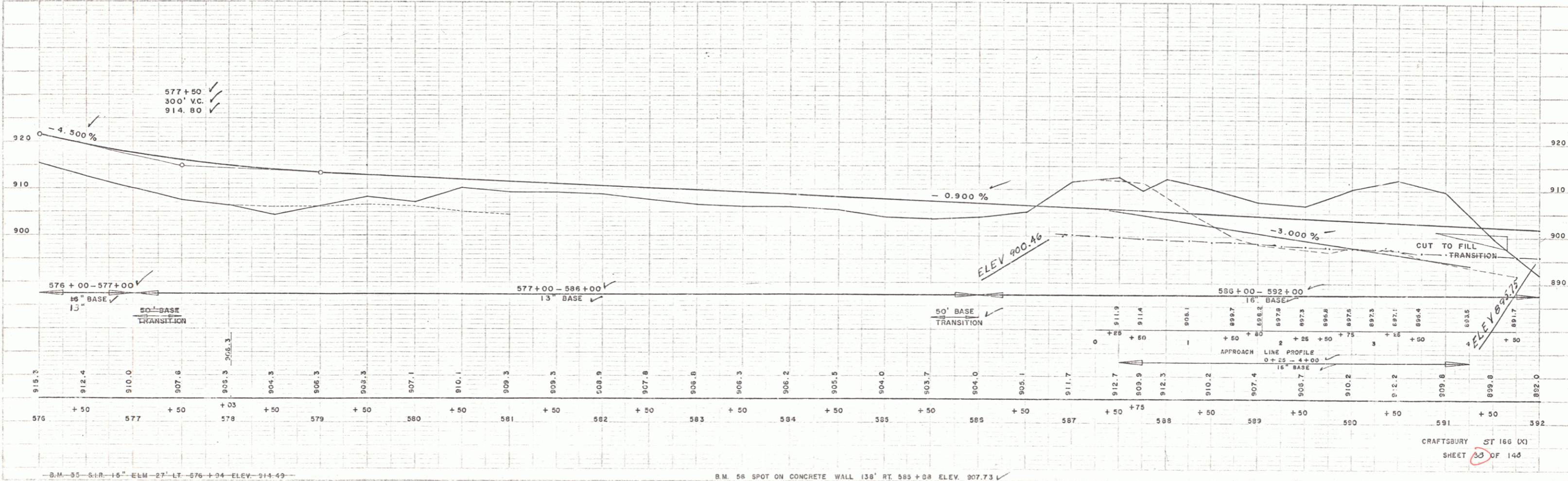


THREE CABLE GUARD RAIL / STEEL POSTS  
RT. 576+48 - 579+49 LT 576+90 - 878+66

REMOVAL & DISPOSAL OF PRESENT GR. RAIL  
376+82 - 578+59 RT.  
576+88 - 579+35 LT  
578+31 - 578+62 RT.

DRIVES  
580+00 RT  
587+80 LT



SPRULINGS - MARTIN INC. 4-15  
WESTER - MARTIN INC. 11-15

SPRULINGS - MARTIN INC. 7-15  
WESTER - MARTIN INC. 11-15

18