

THREE CABLE GUARD RAIL / STEEL
POSTS 450+00 - 452+07 RT

CONSTRUCT APPROACH
454+30 LT
453+30 RT

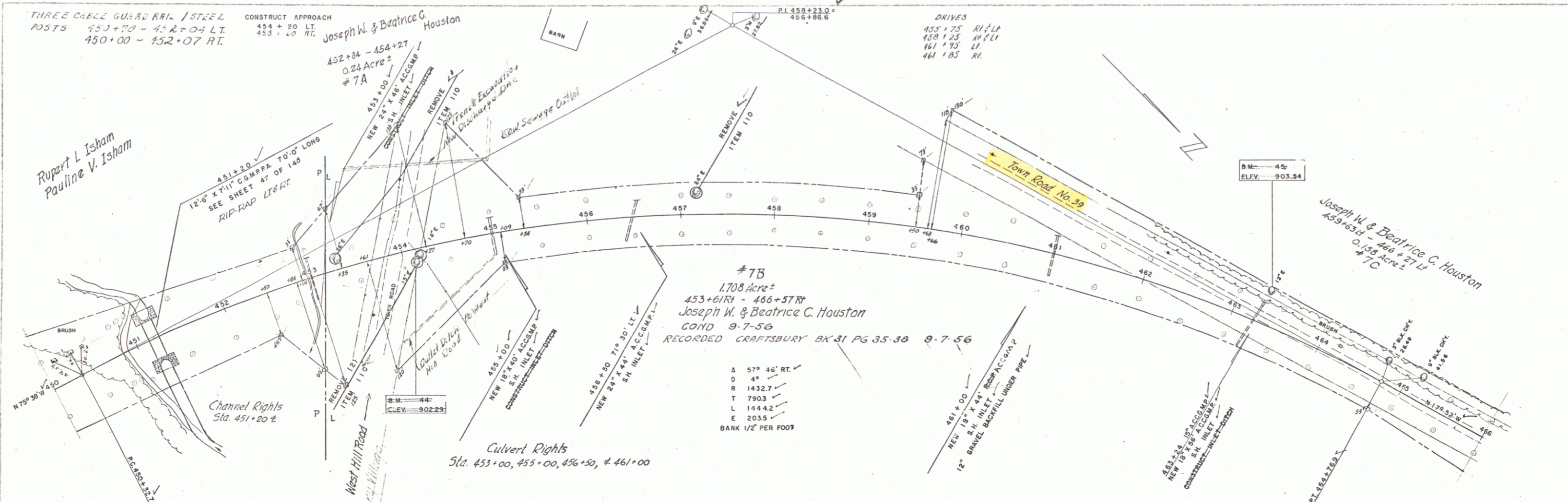
Rupert L. Isham
Pauline V. Isham

Joseph W. & Beatrice C. Houston

432+34 - 454+27
0.24 Acre ±
7A

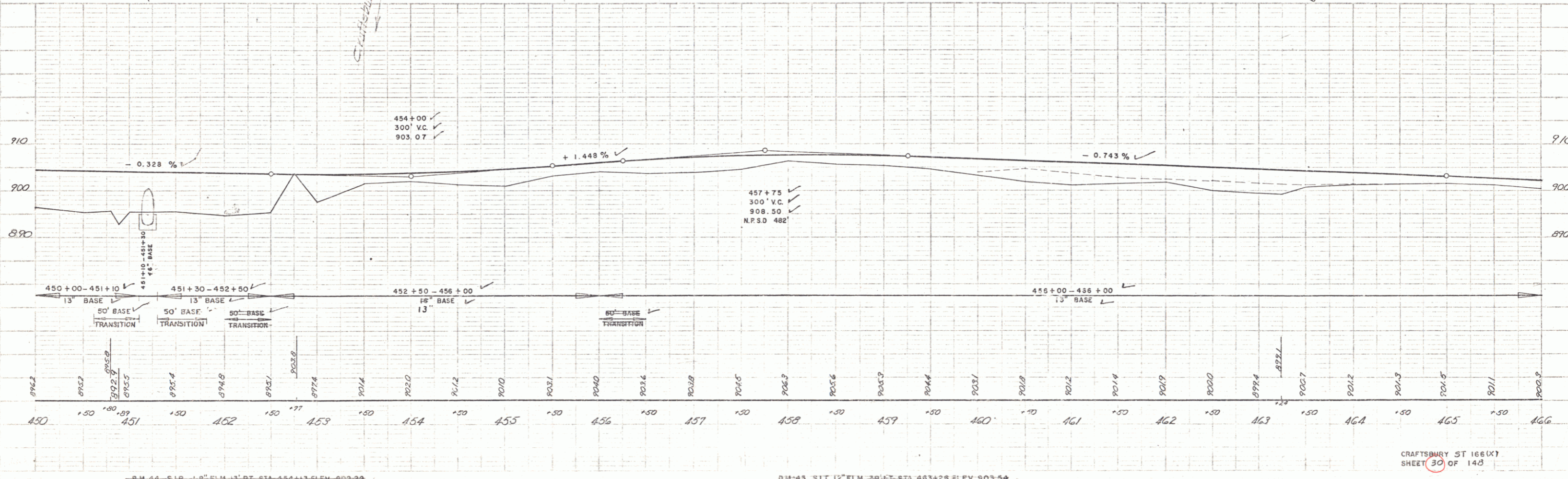
DRIVES
455+75 RI / LI
458+25 RI / LI
461+75 LI
461+85 RI

DELAND & SPALDING 1-85
WESTER-MARTIN, INC. 2-85
TRACED



7B
1.708 Acre ±
453+61 RT - 466+57 RT
Joseph W. & Beatrice C. Houston
COND 9-7-56
RECORDED CRAFTSBURY BK-31 PG 35-38 9-7-56

A 57° 46' RT.
D 49'
R 1432.7'
T 790.3'
L 1444.2'
E 203.5'
BANK 1/2' PER FOOT



DELAND & SPALDING 1-85
WESTER-MARTIN, INC. 2-85
TRACED

CRAFTSBURY ST 166 (X)
SHEET 30 OF 140