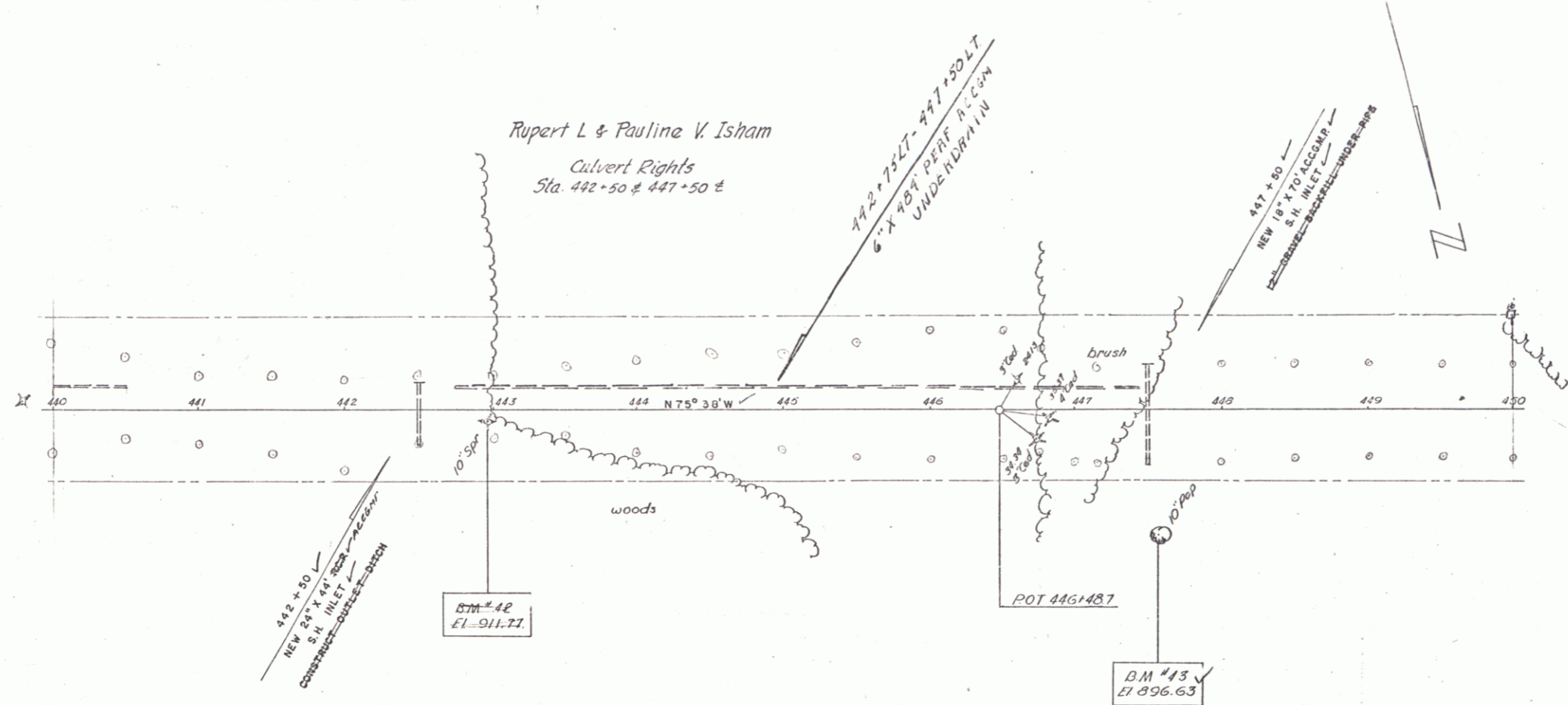
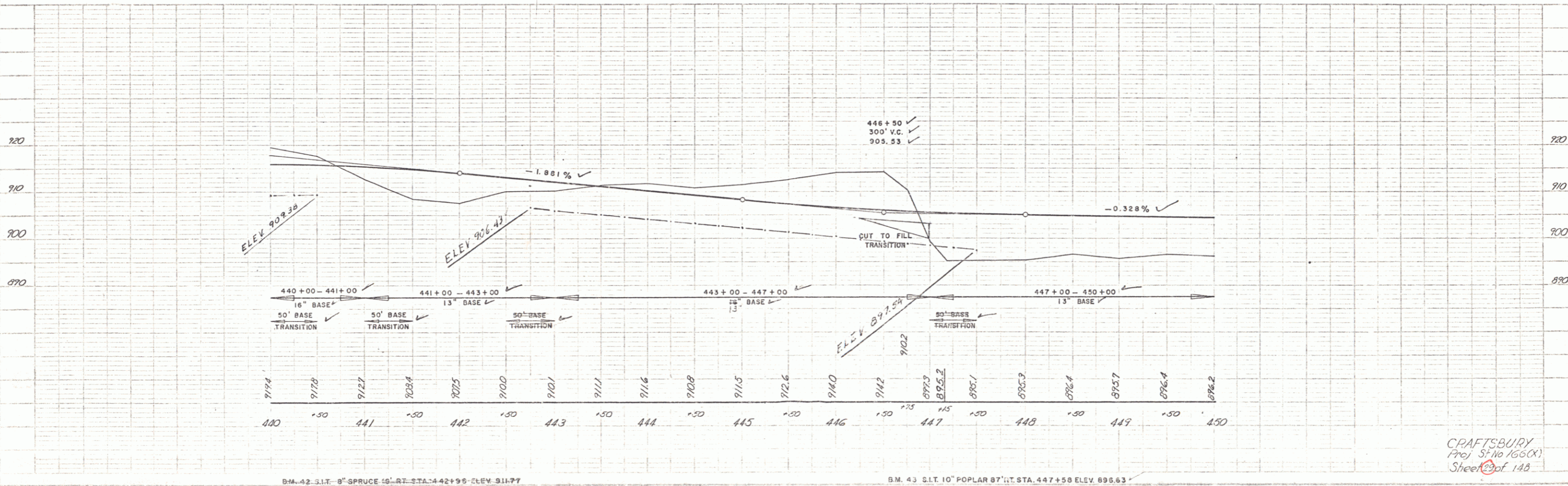


1-33  
 Spaulding  
 1-33  
 Track  
 1-33

1-33  
 Spaulding  
 1-33  
 Track  
 1-33



THREE CABLE GUARD RAIL (STEEL POSTS)  
 457+6 - 450+00 RT



B.M. 42 S.I.T. 8\"/>

CRAFTSBURY  
 Proj. 51 No. 160(CX)  
 Sheet 2 of 148

9