

INDEX OF SHEETS

SHEET NO. 1	TITLE PAGE
" 2	TYPICAL CROSS-SECTION OF IMPROVEMENT 22" GRAVEL SURFACE COURSE
" 3	BANKING & WIDENING TABLES
" 4-9	PLAN & PROFILE SHEETS
" 6	STANDARD STRUCTURE SHEET 524 PIPE CULVERTS
" 7	" " " " 530 GUARD RAIL
" 8	" " " " 534 C.R.M. BOX CULVERTS
" 9	" " " " 535 II BARRICADES SIGNS - LIGHTS
" 10-12	CROSS SECTION SHEETS

STANDARD STRUCTURE SHEETS 524 APPROVED BY THE CHIEF ENGINEER ON JULY 16, 1933.
Standard sheet 5-30 approved by the Chief Engineer on Aug. 15, 1933.

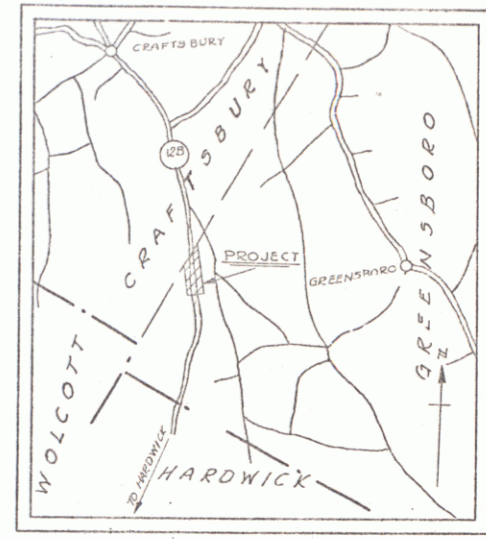
FED. ROAD DIST. NO.	STATE	PROJECT NO.	YEAR	SHEET NO.	TOTAL SHEETS
9	VT.	166	1934	1	5

STATE OF VERMONT
STATE HIGHWAY DEPARTMENT

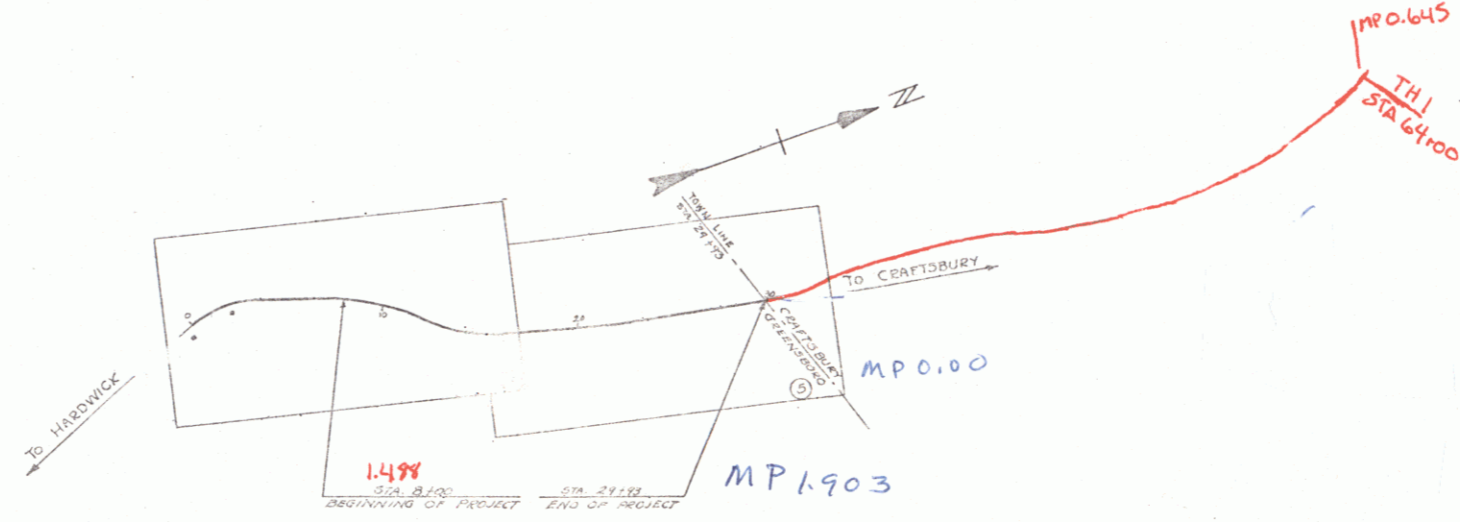
PLAN AND PROFILE OF PROPOSED
STATE HIGHWAY
NATIONAL RECOVERY SECONDARY HIGHWAY PROJECT

TOWN OF GREENSBORO Pin # 00R766

HARDWICK-CRAFTSBURY ROAD
FROM 600 FT. NORTH OF THE RESIDENCE OF LESLIE THOMPSON NORTH-ERLY 0.547 MI. TO THE GREENSBORO - CRAFTSBURY TOWN LINE.
LENGTH OF PROJECT - 2193.0 FT. = 0.415 MI.



SCALE - 1 IN. = 1 MI.



RIGHT-OF-WAY DIVISION
TOWN FILE!
PERPETUAL
Town of Craftsbury Vt. 14
(To Be Returned To R.O.W. Division)

APPROVED August 31, 1934
Commissioner of Highways

CONVENTIONAL SIGNS

COUNTY LINE	GROUND ELEVATION
TOWN LINE	FENCE LINE
STONE WALL	UNFENCED PROPERTY
GUARD RAIL	TRAVELED WAY
RAILROAD	RETAINING WALL
CENTER LINE	SURVEY LINE
CULVERT	DROP INLET
TROLLEY POLE	POWER POLE
TELEPHONE POLE	TREES
HEDGE	

CURVE DATA

DEFLECTION ANGLE	D
DEGREE OF CURVE	D
RADIUS OF CURVE	R
TANGENT DISTANCE	T
LENGTH OF CURVE	L
EXTERNAL DISTANCE	E
POINT OF INTERSECTION	P. I.
POINT OF CURVE	P. C.
POINT OF TANGENT	P. T.
POINT ON TANGENT	P. O. T.

SCALES

TITLE	1" = 800'
PLAN	1" = 200'
PROFILE	VERT. 1" = 10'
CROSS SECTIONS	1" = 5'

Project No. NRS 166

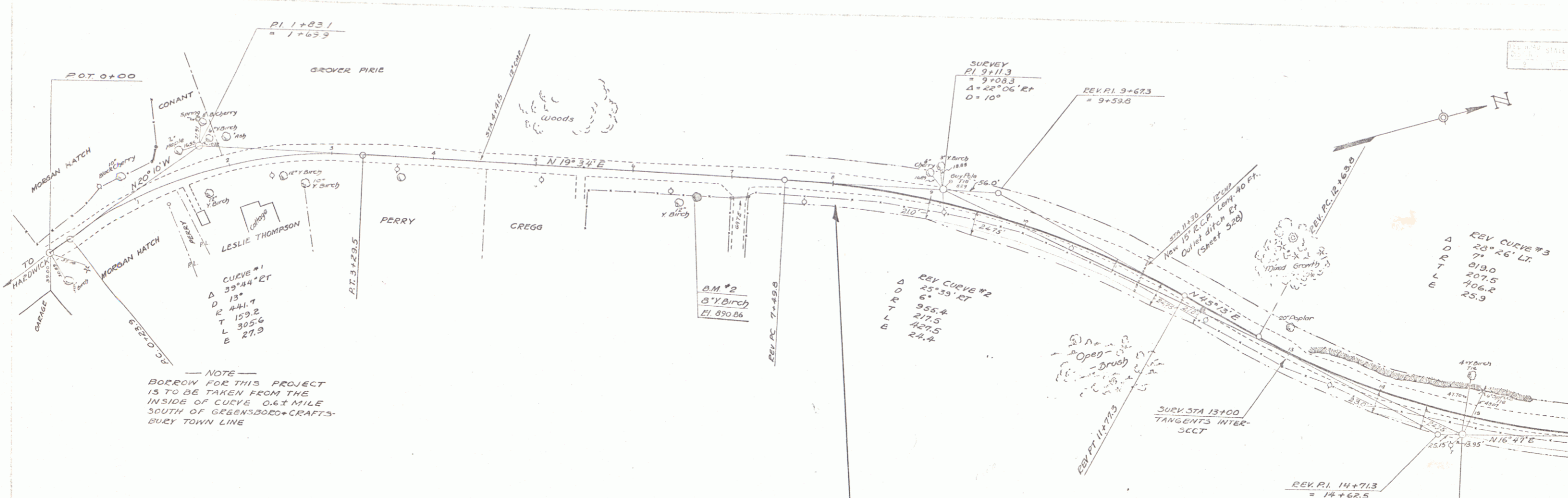
NOTE - THESE PLANS ARE SUBJECT TO SUCH REVISIONS AS MAY BE REQUIRED BY THE BUREAU OF PUBLIC ROADS OR THE COMMISSIONER OF HIGHWAYS. CONSTRUCTION TO BE CARRIED ON IN ACCORDANCE WITH THE STANDARD ROAD & BRIDGE SPECIFICATIONS OF 1930 WITH ALL SUBSEQUENT APPROVED REVISIONS AND SUCH SPECIFICATIONS AND SPECIAL PROVISIONS AS ARE SUBMITTED WITH THE PLANS.

RECOMMENDED
DISTRICT ENGINEER BUREAU OF PUBLIC ROADS
RECOMMENDED FOR APPROVAL
CHIEF ENGINEER BUREAU OF PUBLIC ROADS
APPROVED
COMMISSIONER OF HIGHWAYS

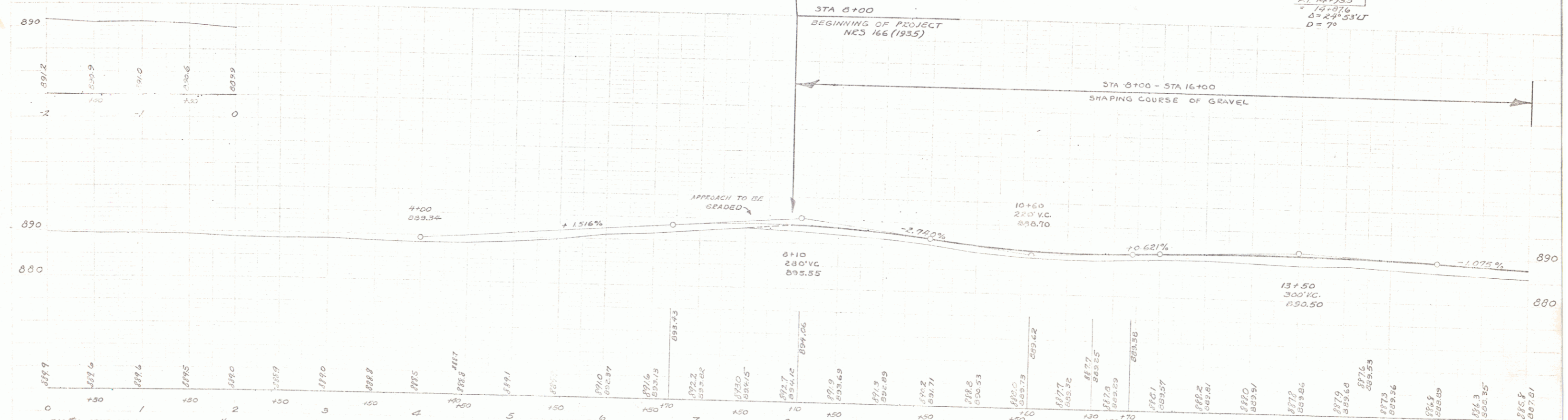
CONTRACT _____ SERIES NRS NO. 166 (1934)
SHEET 1 OF _____

Vt. 14

DIST # 9 Plans 1



NOTE
BORROW FOR THIS PROJECT
IS TO BE TAKEN FROM THE
INSIDE OF CURVE 0.61 MILE
SOUTH OF GREENSBORO-CRAFTS-
BURY TOWN LINE



BM #1 SPOT ON GAS FOUNDATION 1/2 MILE SOUTH OF GREENSBORO-CRAFTSBURY TOWN LINE ELEV 893.33
BM #2 8" YELLOW BIRCH 21" RT STA. 6+62 ELEV. 890.86

PARSONS
SUCCESSION

PARSONS
SUCCESSION



SHEET 6

41

D. MACCHI 10/54

