

INDEX OF SHEETS

SHEET NO. 1	TITLE PAGE
" 2	TYPICAL CROSS-SECTION OF IMPROVEMENT 22" GRAVEL SURFACE COURSE
" 3	BANKING & WIDENING TABLES
" 4-9	PLAN & PROFILE SHEETS
" 6	STANDARD STRUCTURE SHEET 524 PIPE CULVERTS
" 7	" " " " 530 GUARD RAIL
" 8	" " " " 534 C.R.M. BOX CULVERTS
" 9	" " " " 535 II BARRICADES-SIGNS-LIGHTS
" 10-12	CROSS SECTION SHEETS

STANDARD STRUCTURE SHEETS 524 APPROVED BY THE CHIEF ENGINEER ON JULY 16, 1933.  
Standard sheet 5-30 approved by the Chief Engineer on Aug. 15, 1933.

FED. ROAD DIST. NO.	STATE	NO. 23	YEAR	SHEET NO.	TOTAL SHEETS
9	VT.	166	1934	1	15

STATE OF VERMONT  
STATE HIGHWAY DEPARTMENT

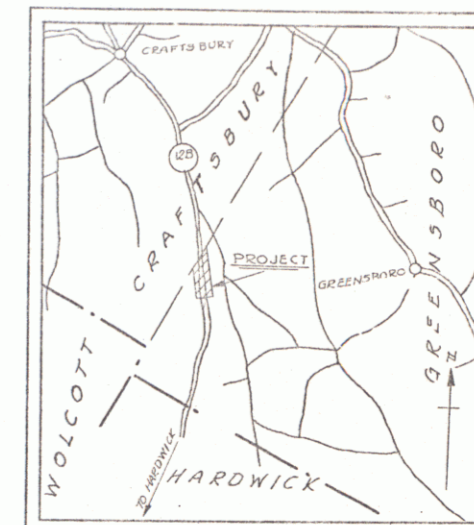
PLAN AND PROFILE OF PROPOSED  
STATE HIGHWAY

NATIONAL RECOVERY SECONDARY HIGHWAY PROJECT

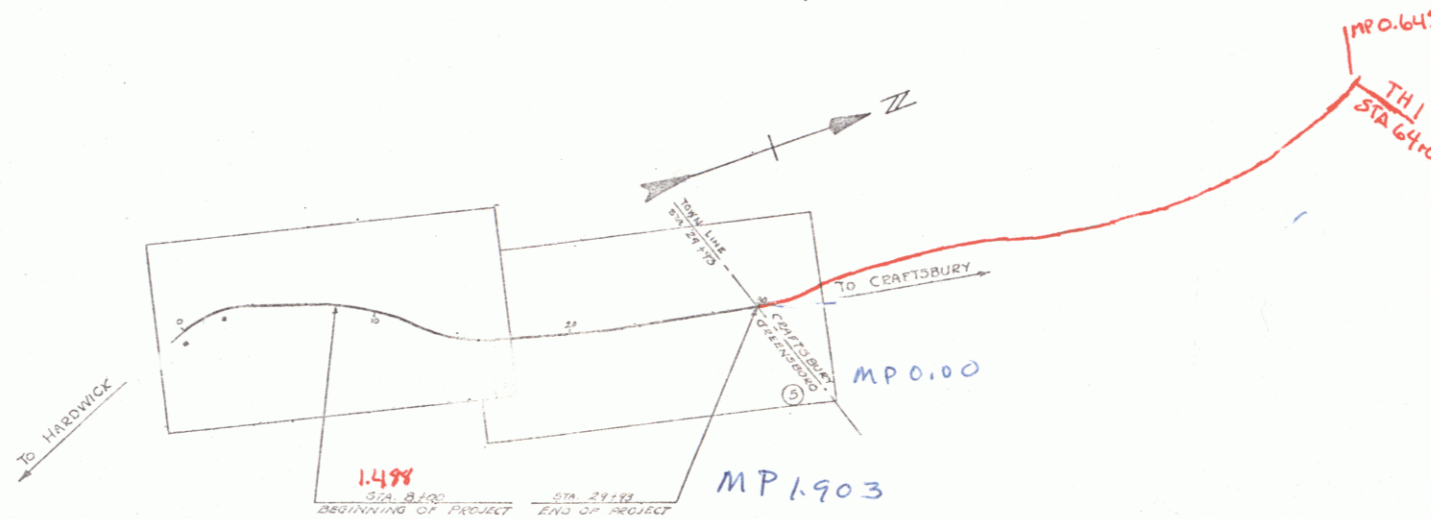
TOWN OF GREENSBORO Pin # 00R766

HARDWICK-CRAFTSBURY ROAD  
FROM 600 FT. NORTH OF THE RESIDENCE OF LESLIE THOMPSON NORTH-ERLY 0.547 MI. TO THE GREENSBORO - CRAFTSBURY TOWN LINE.

LENGTH OF PROJECT - 2193.0 FT. = 0.415 MI.



SCALE - 1 IN. = 1 MI.



RIGHT-OF-WAY DIVISION  
TOWN FILE!  
PERPETUAL  
Town of Craftsbury Vt. 14  
(To Be Returned To R.O.W. Division)

APPROVED August 31, 1934  
Commissioner of Highways  
SUBMITTED BY ORDER OF THE STATE HIGHWAY DEPARTMENT

CONVENTIONAL SIGNS

COUNTY LINE	GROUND ELEVATION
TOWN LINE	FENCE LINE
STONE WALL	UNFENCED PROPERTY
GUARD RAIL	TRAVELED WAY
RAILROAD	RETAINING WALL
CENTER LINE	SURVEY LINE
CULVERT	DROP INLET
TROLLEY POLE	POWER POLE
TELEPHONE POLE	TREES
HEDGE	

CURVE DATA

DEFLECTION ANGLE	D
DEGREE OF CURVE	D
RADIUS OF CURVE	R
TANGENT DISTANCE	T
LENGTH OF CURVE	L
EXTERNAL DISTANCE	E
POINT OF INTERSECTION	P. I.
POINT OF CURVE	P. C.
POINT OF TANGENT	P. T.
POINT ON TANGENT	P. O. T.

SCALES

TITLE	1" = 800'
PLAN	1" = 200'
PROFILE	VERT. 1" = 10'
CROSS SECTIONS	1" = 20'

Project No. NRS 166

NOTE - THESE PLANS ARE SUBJECT TO SUCH REVISIONS AS MAY BE REQUIRED BY THE BUREAU OF PUBLIC ROADS OR THE COMMISSIONER OF HIGHWAYS. CONSTRUCTION TO BE CARRIED ON IN ACCORDANCE WITH THE STANDARD ROAD & BRIDGE SPECIFICATIONS OF 1930 WITH ALL SUBSEQUENT APPROVED REVISIONS AND SUCH SPECIFICATIONS AND SPECIAL PROVISIONS AS ARE SUBMITTED WITH THE PLANS.

RECOMMENDED  
DISTRICT ENGINEER  
BUREAU OF PUBLIC ROADS  
RECOMMENDED FOR APPROVAL  
CHIEF ENGINEER  
BUREAU OF PUBLIC ROADS  
APPROVED  
COMMISSIONER OF HIGHWAYS

CONTRACT  
SERIES NRS NO. 166 (1934)  
SHEET 1 OF 15

Vt 14  
DIST # 9 Plans 1