

INDEX OF SHEETS

- SHEET NO.
- 1 TITLE SHEET
 - 2 TYPICAL CROSS SECTION OF IMPROVEMENT (DOUBLE TACK COAT OF REFINED TAR WITH PEA STONE SEAL, CLASS-A, ITEM 512-A)
 - 3 BANKING & WIDENING TABLES
 - 4 QUANTITY SHEET (ITEMS)
 - 5 QUANTITY SHEET (DRAINAGE)
 - 6-8 EARTHWORK SHEETS
 - 9 CONSTRUCTION DETAILS CD-(DRAINAGE & MARKERS)
 - 10 CONSTRUCTION DETAILS CD-(DITCHES)
 - 11 CONSTRUCTION DETAILS CD-2(TYPICAL GRADING & TURNOUTS)
 - 12 STANDARD STRUCTURE SHEET S-40(BARRICADES, SIGNS & LIGHTS)
 - 13 STANDARD STRUCTURE SHEET S-48-46(THREE CABLE GUARD RAIL)
 - 14-19 PLAN & PROFILE SHEETS
 - 20-42 CROSS SECTIONS

STANDARD STRUCTURE SHEET APPROVED BY THE CHIEF ENGINEER, VERMONT STATE DEPARTMENT OF HIGHWAYS. S-40 JUNE 10, 1950

STATE OF VERMONT
DEPARTMENT OF HIGHWAYS

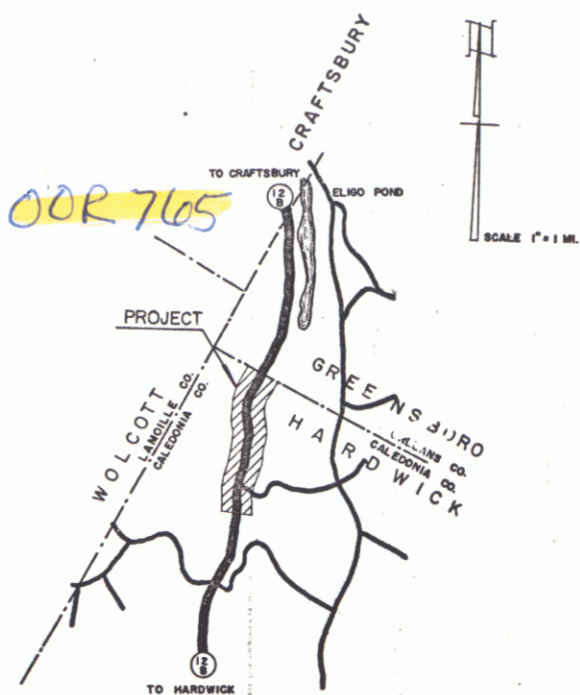
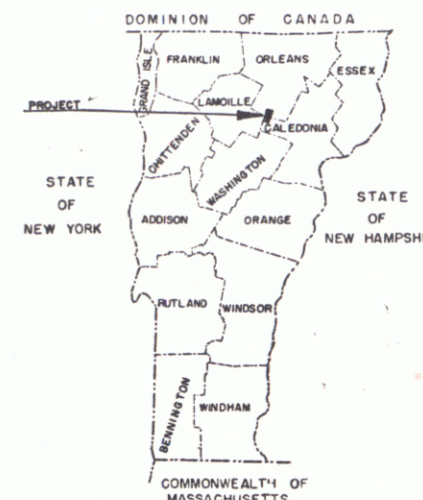
PROPOSED IMPROVEMENT

FEDERAL AID SECONDARY PROJECT

TOWN OF HARDWICK Pin 00R 705
COUNTY OF CALEDONIA
VERMONT ROUTE 14
HARDWICK-CRAFTSBURY ROAD

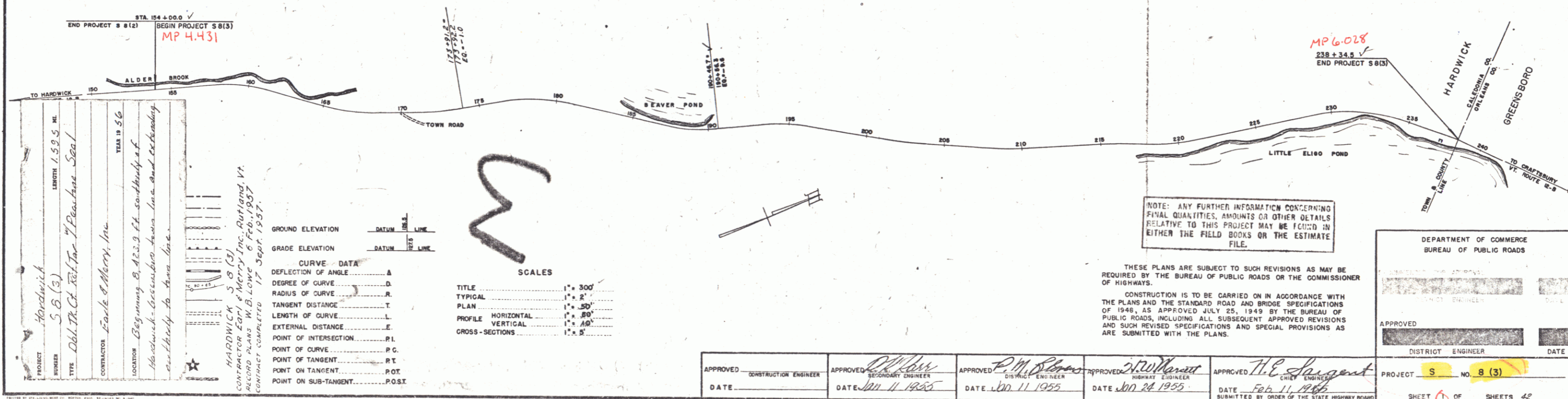
BEGINNING AT A POINT 8,423.9 FEET SOUTH OF THE HARDWICK-GREENSBORO TOWN LINE AND EXTENDING NORTHERLY 8,423.9 FEET
LENGTH OF PROJECT 8,423.9 FEET = 1.595 MILES ✓

FED. ROAD DISTRICT NO.	STATE	PROJECT NO.	SHEET NO.	TOTAL SHEETS
1	VT	S 8(3)	1	42



PROJECT NAME & NUMBER	TYPE	PAVEMENT AREA
Hardwick S 8 (3)	Dbl. Tk. - Pst. Sl.	18,720 S.Y.
RECORD PLANS		
MATERIALS		
SUB-BASE OF GRAVEL Shatney Pit, Wolcott, Vt. Fleming Pit, Wolcott, Vt.	STRUCTURAL STEEL Bethlehem Steel Co., Bethlehem, Pa.	
CRUSHED GRAVEL Fleming Pit, Wolcott, Vt.	R.C.P. Vt. Concrete Pipe Co., Windsor, Vt.	
REFINED TAR Koppers, Everett, Mass.	ACCGAMP N Eng Metal Cully Co., Boston, Mass.	
PEASTONE FOR SEAL Wado Plant, Johnson, Vt.	CABLE FOR GUARD RAIL American Steel & Wire Co., New Haven, Conn.	
GUARD RAIL PAINT Bradley Labs, Brattleboro, Vt.		
CONTRACTOR Earl & Merry, Inc., Rutland, Vt.	CONTRACT DATED 23 June, 1955	
RESIDENT ENG'R C. B. Foster	CONTRACT STARTED 23 June, 1955	
INSPECTOR P. Trombley	CONTRACT COMPLETED 17 Sept., 1956	
RECORD PLANS W.B. Lowe 6 Feb. 1957	CONTRACT ACCEPTED 17 Sept., 1956	

RIGHT-OF-WAY DIVISION
TOWN FILE
PERPETUAL
Town of VT 14
[To Be Returned To R.O.W. Division]



PROJECT Hardwick
NUMBER S 8 (3)
TYPE Dbl. Tk. Ct. Pst. Tar 7" Peastone Seal
CONTRACTOR Earl & Merry, Inc.
LOCATION Beginning at 8,423.9 ft. south of H.A. Hardwick-Greensboro town line and extending northward to town line.
CONTRACTOR EARL & MERRY, INC., RUTLAND, VT.
RECORD PLANS W.B. LOWE 6 FEB. 1957
CONTRACT COMPLETED 17 SEPT. 1956

CURVE DATA	
DEFLECTION OF ANGLE A
DEGREE OF CURVE D
RADIUS OF CURVE R
TANGENT DISTANCE T
LENGTH OF CURVE L
EXTERNAL DISTANCE E
POINT OF INTERSECTION P.I.
POINT OF CURVE P.C.
POINT OF TANGENT P.T.
POINT ON TANGENT P.O.T.
POINT ON SUB-TANGENT P.O.S.T.

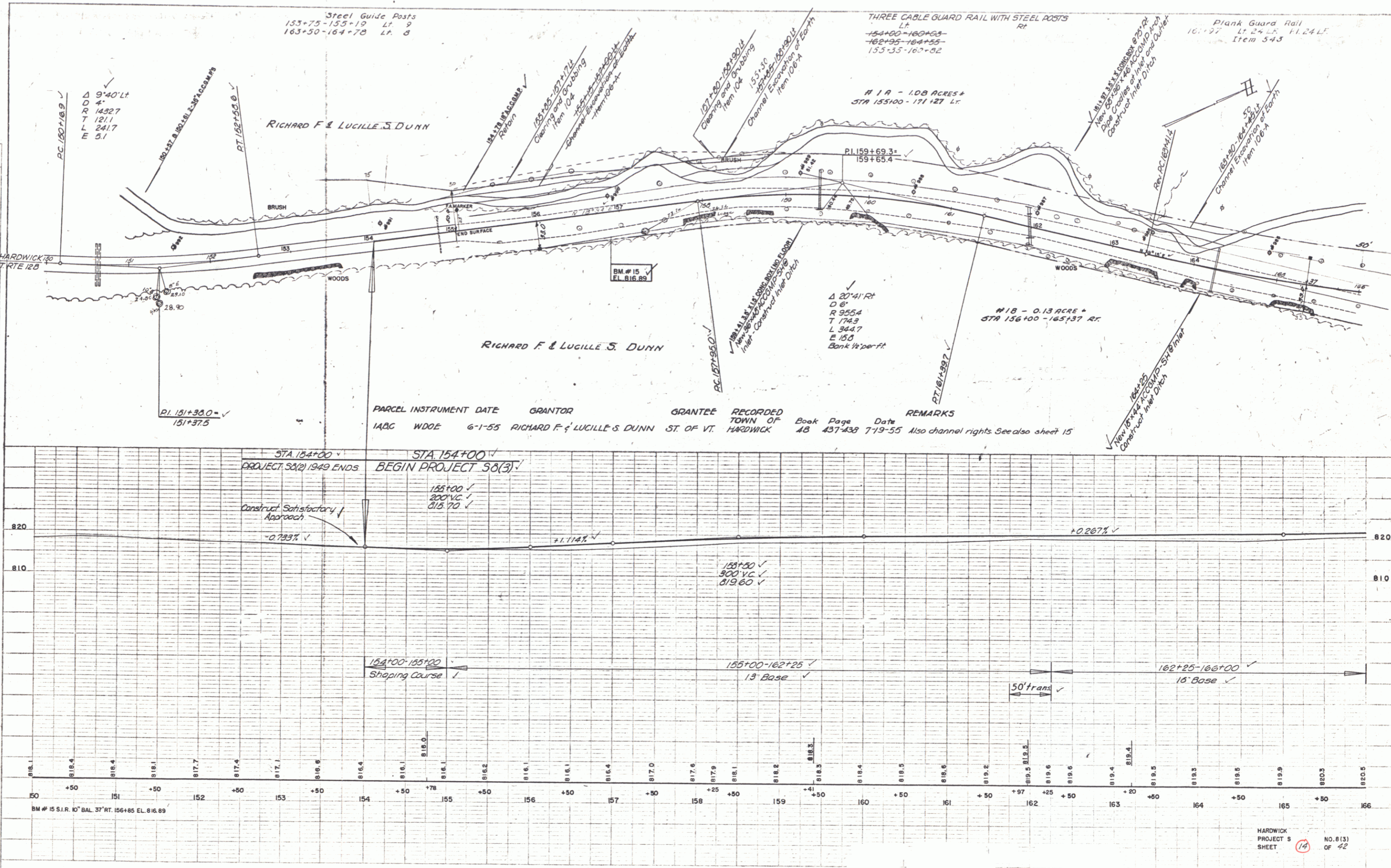
SCALES	
TITLE 1" = 300'
TYPICAL 1" = 2'
PLAN 1" = 50'
PROFILE HORIZONTAL 1" = 80'
PROFILE VERTICAL 1" = 10'
CROSS-SECTIONS 1" = 5'

APPROVED CONSTRUCTION ENGINEER	APPROVED DISTRICT ENGINEER	APPROVED DISTRICT ENGINEER	APPROVED DISTRICT ENGINEER	APPROVED CHIEF ENGINEER
DATE Jan 11 1955	DATE Jan 11 1955	DATE Jan 11 1955	DATE Jan 24 1955	DATE Feb 11 1955

PROJECT S NO. 8 (3)
SHEET 1 OF SHEETS 42

PLAN
 DATE
 DRAWN BY
 CHECKED BY
 TITLE

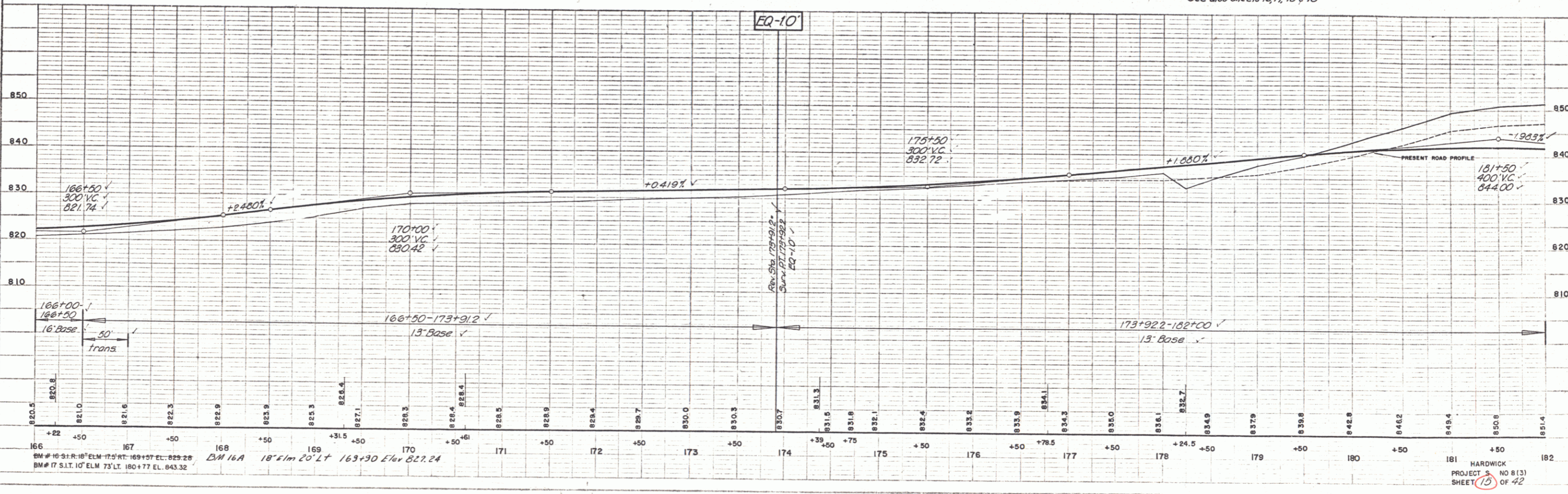
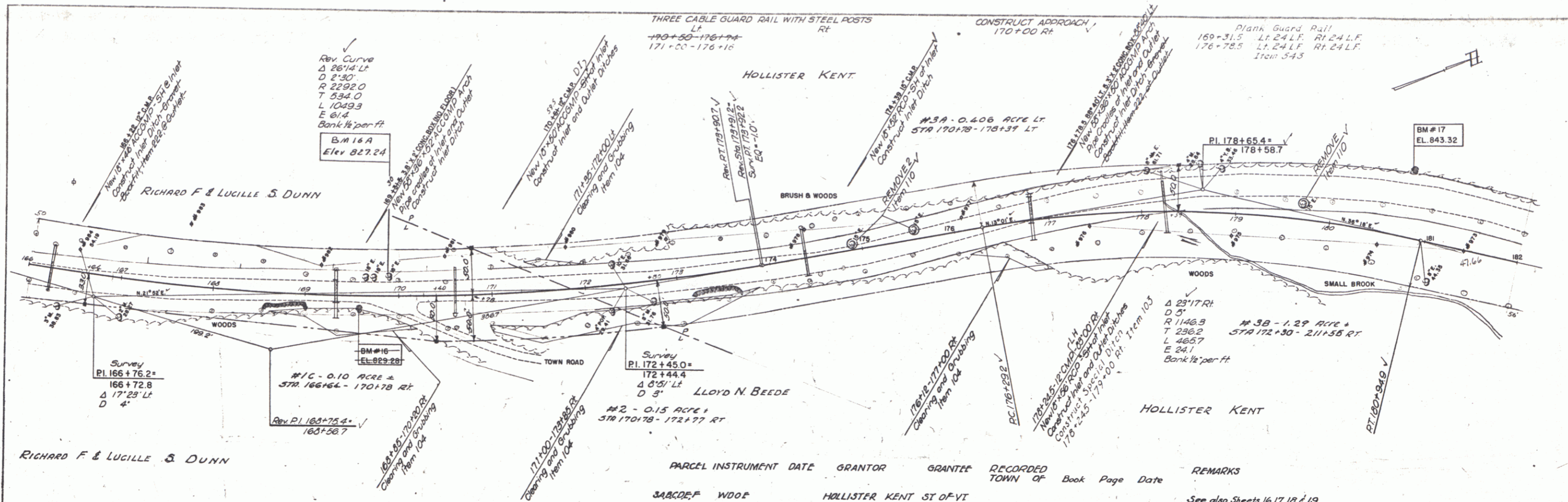
SCALE
 DATE
 DRAWN BY
 CHECKED BY
 TITLE



HARDWICK PROJECT 5 SHEET 14 OF 42

PLAN	DATE	BY
NOTED	7/24	W.A.
PLOTTED	7/24	W.A.
INSTRUMENT CHECKED		
FIELD CHECKED		
TRACED		

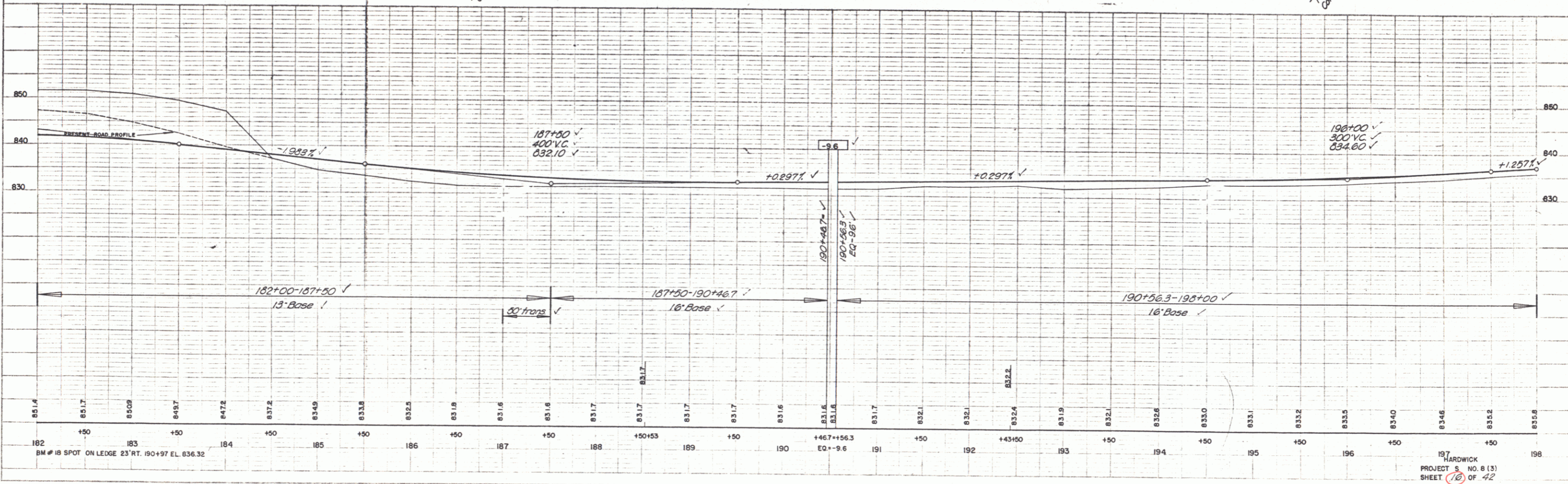
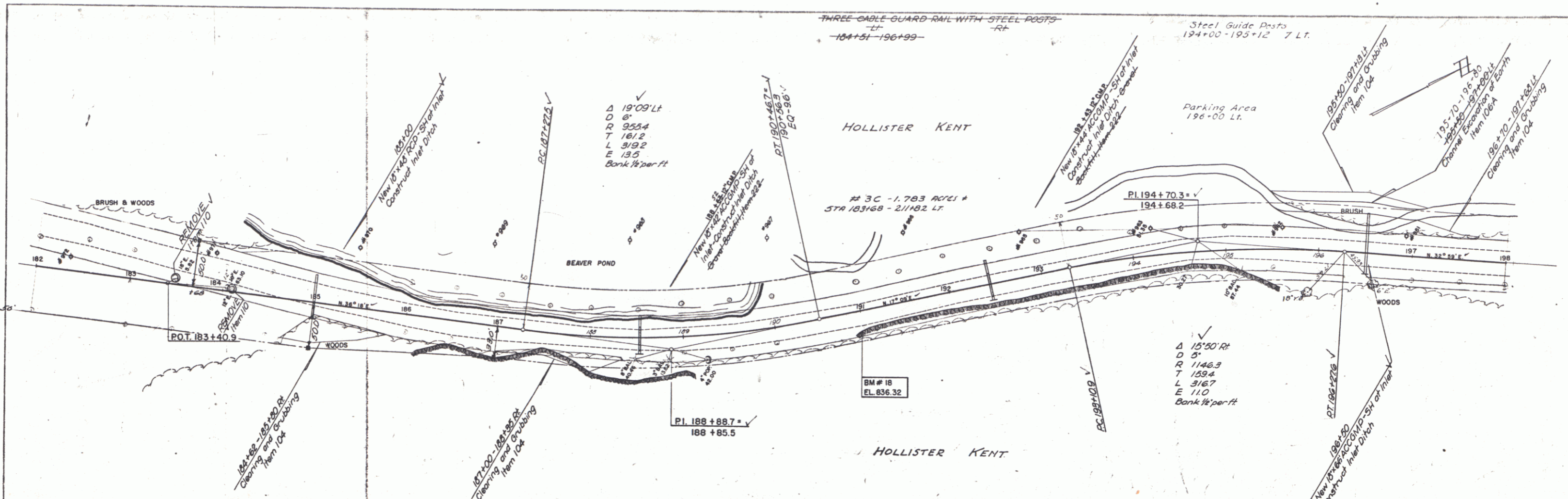
PROFILE	DATE	BY
NOTED	7/24	W.A.
PLOTTED	7/24	W.A.
INSTRUMENT CHECKED		
FIELD CHECKED		
TRACED		



HARDWICK PROJECT NO 813 SHEET 15 OF 42

DATE	7/24
BY	7/24
PROJECT	SPAWLING
NO.	10
NOTE	SEE SHEET 10 FOR CONT'D
TRACED	AT

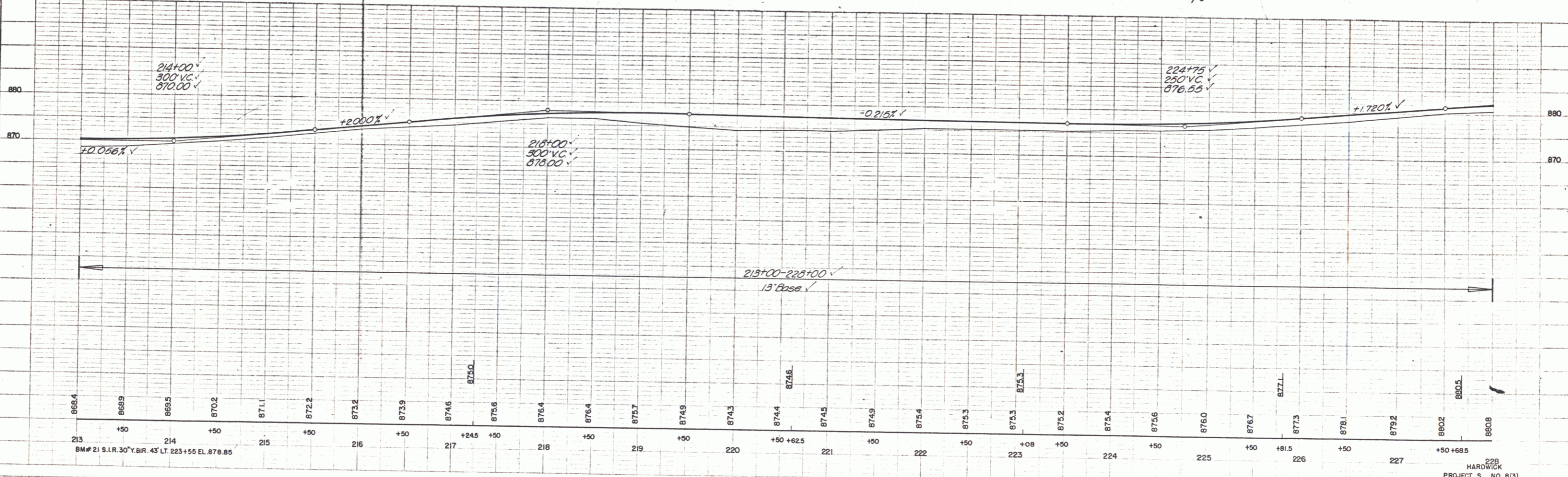
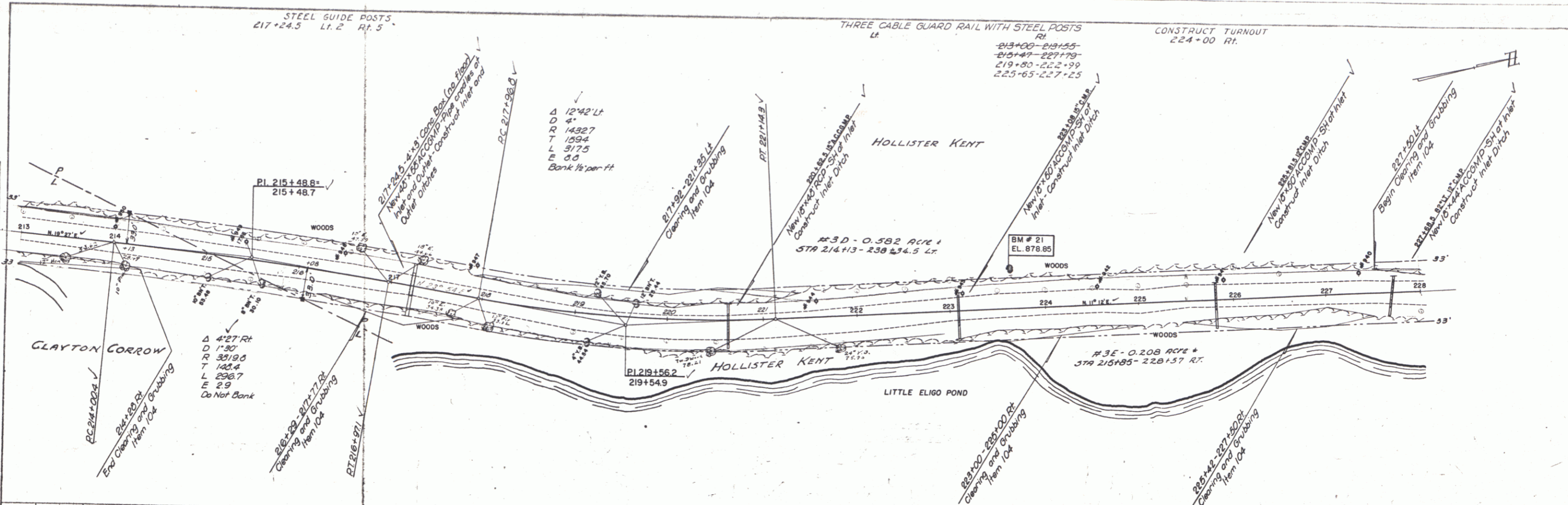
DATE	7/24
BY	7/24
PROJECT	SPAWLING
NO.	10
NOTE	SEE SHEET 10 FOR CONT'D
TRACED	AT



HARDWICK
PROJECT S. NO. 8 (3)
SHEET 10 OF 42

PLAN	DATE	BY
REVISED		
DATE		
BY		
REVISIONS		
NO.	DATE	BY

PROJECT	DATE	BY
REVISED		
DATE		
BY		
REVISIONS		
NO.	DATE	BY



228
HARDWICK
PROJECT NO. 813
SHEET 18 OF 42

