



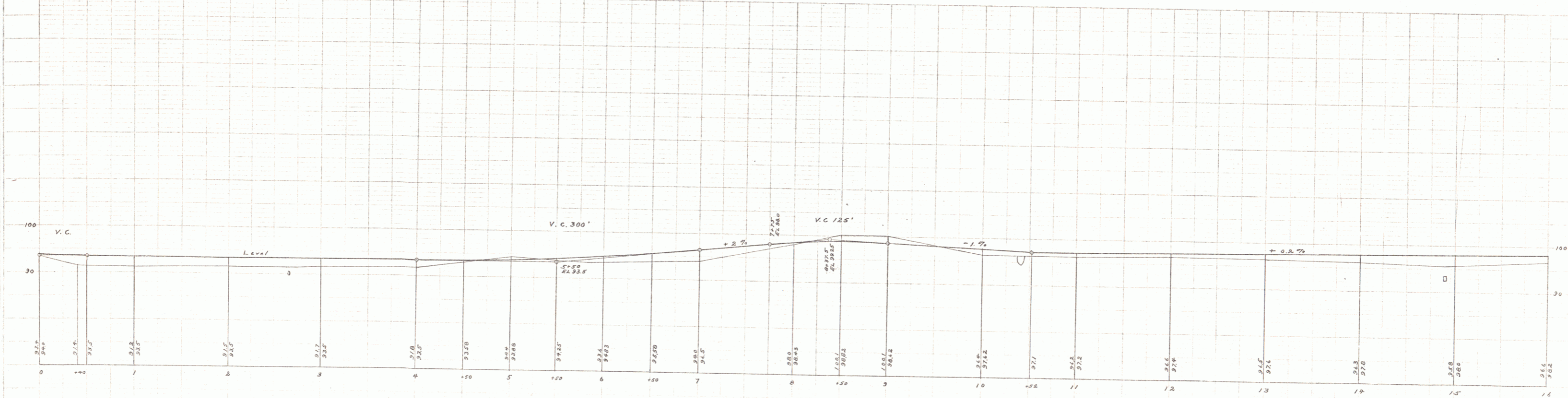
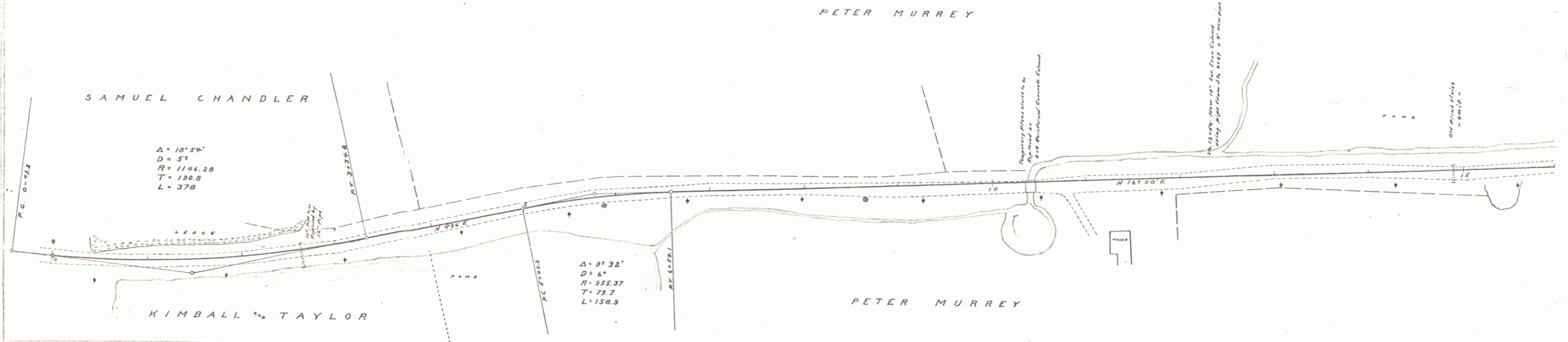
**GUARD RAIL REQUIRED**  
**ON LEFT**  
 Sta. 2+55 to Sta. 2+79 Length 24M  
 - 10+20 - - 11+00 - 80 -  
 - 12+40 - - 16+00 - 360 -  
**ON RIGHT**  
 Sta 0+60 to Sta. 5+90 - 480  
 - 6+80 - - 7+60 - 80 -  
 - 10+20 - - 10+60 - 40 -  
 - 12+38 - - 12+62 - 24 -  
**TOTAL THIS SHEET 1000**

**NEW CULVERTS REQUIRED**  
 Sta 2+6 - 12" Pipe Culvert 30 ft  
 Concrete Headwalls 1 cu yd  
 - 12+52 - 10" Pipe Culvert 9 ft  
 Concrete Headwalls 1 cu yd  
 - 10+92 - 4" x 14" Culvert Concrete 18 - -  
 Steel 150 lbs

NO. ROAD DIST. NO.	START	END	ADJ. DIST.	ADJ. END	ADJ. DIST.	TOTAL
1	0	1000	0	1000	1000	1000

100-987  
 G. A. Reed  
 G. R. Dwyer  
 D. B. Bazzani  
 1/1/11

100-987  
 G. A. Reed  
 G. R. Dwyer  
 D. B. Bazzani  
 1/1/11



B.M. Bottom of baseboard S.W. cor Kimball & Taylor house EL. 100.00 (Assumed)  
 B.M. Natch in rear of spruce opp Sta. 4+90 EL. 95.60  
 B.M. Bottom of baseboard S.E. cor Peter Murrey house EL. 102.39

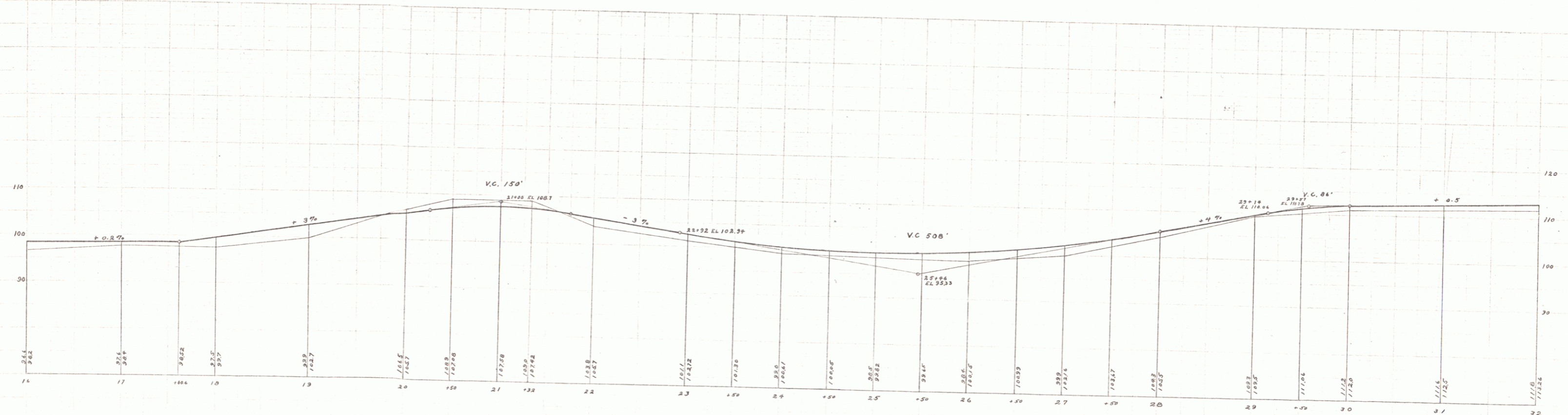
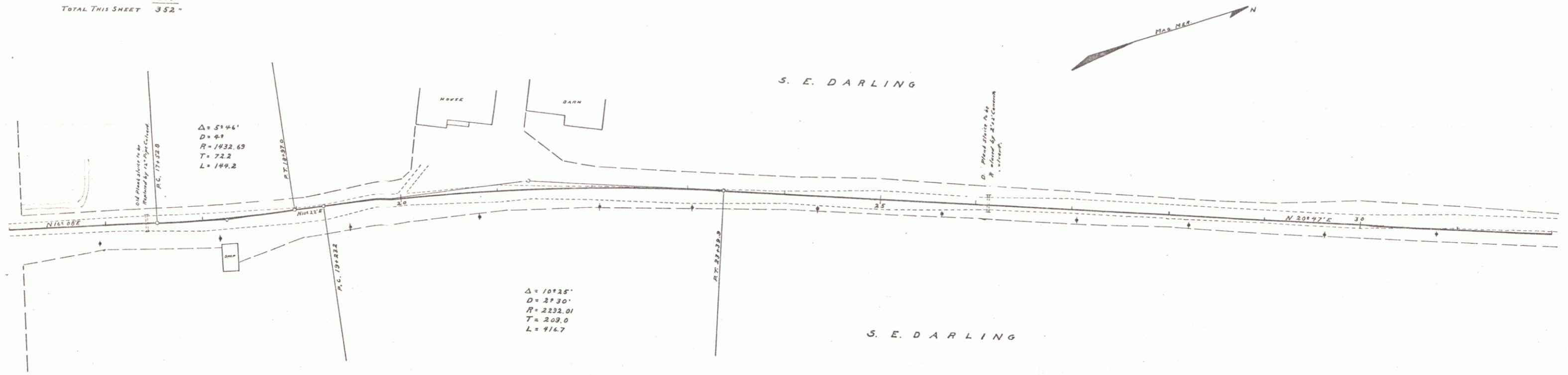
James K. No. 8 Field  
 1/1/11

**GUARD RAIL REQUIRED**  
 ON LEFT  
 Sta. 16+00 to 16+80 Length 80 ft.  
 - 17+30 - 17+58 " 28 -  
 - 26+00 - 26+29 " 29 -  
 ON RIGHT  
 Sta. 17+30 to 17+58 " 28 -  
 - 26+75 - 26+75 " 200 -  
 TOTAL THIS SHEET 352 -

**NEW CULVERTS REQUIRED**  
 Sta. 17+ - 2 - 12" Pipe Culvert 30 ft.  
 Concrete Headwalls 1 ea. yds.  
 - 26+ - 2 - 2'x2' Concrete Culvert 116 - -

**COBBLE GUTTER REQUIRED**  
 ON LEFT  
 Sta. 27+00 to Sta. 30+00 100 sq. yd.  
 ON RIGHT  
 Sta. 20+50 to Sta. 30+00 59 - -  
 TOTAL THIS SHEET 159 - -

FED. ROAD DIST. NO.	STATE	FED. AID PROJ. NO.	FISCAL YEAR	SHEET NO.	TOTAL SHEETS
3	VT	3	1917	4	12

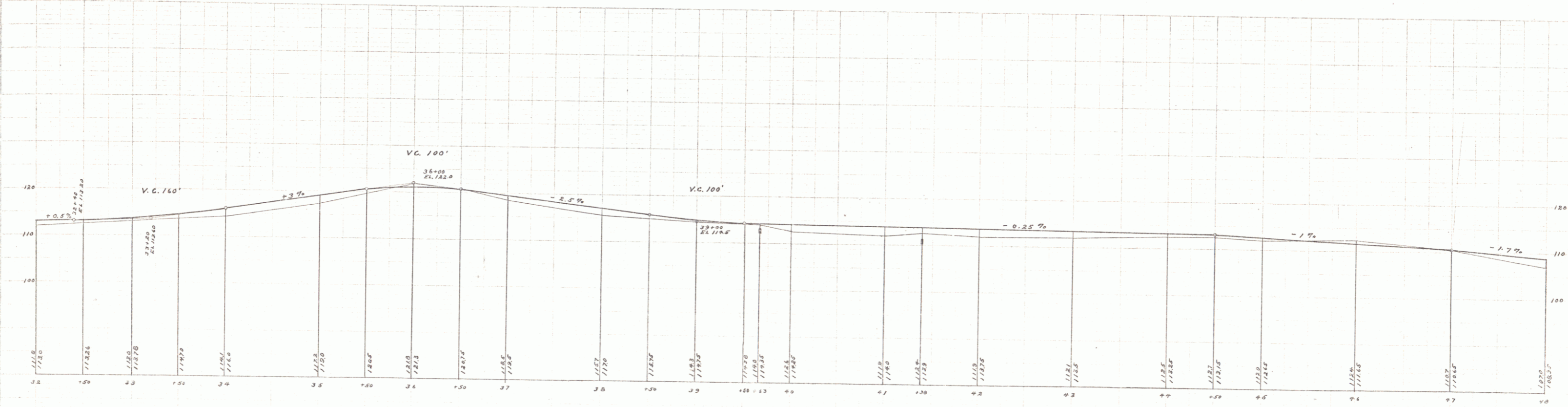
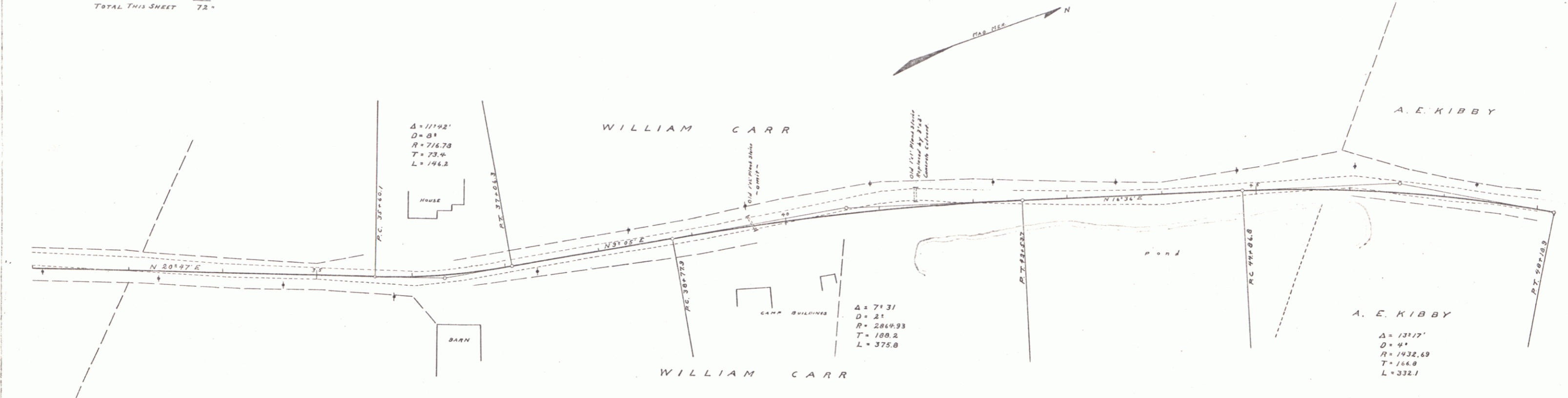


B.M. Spike in SWly cor. of shop Sta. 16+10.3 EL. 100.15  
 B.M. Hub Sta. 21+32.2 EL. 100.01

GUARD RAIL REQUIRED  
ON LEFT  
Sta. 41+26 to Sta. 41+50 Length 24ft  
ON RIGHT  
Sta. 41+00 to Sta. 41+10 " 10"  
TOTAL THIS SHEET 34'

NEW CULVERTS REQUIRED  
Sta. 41+38 - 3'x3' Concrete Culvert 16.6 mays.

PC	PT	STAKE	PC AND DIST. FROM STA.	PT AND DIST. FROM STA.	ARC LENGTH	TOTAL LENGTH
1	2	1	100	100	0	0



B.M. Bottom of best board S.W. cor Carr's Barn El. 119.38  
B.M. Spike in paper opp Sta. 46+22 El. 114.88

Series C. S. D. CIVIL  
301 1/2

**GUARD RAIL REQUIRED**

**ON LEFT**

Sta 50+00 to Sta 51+12	Length 24 ft
- 53+69 -	53+93 - 24 -
- 56+04 -	58+00 - 164 -

**ON RIGHT**

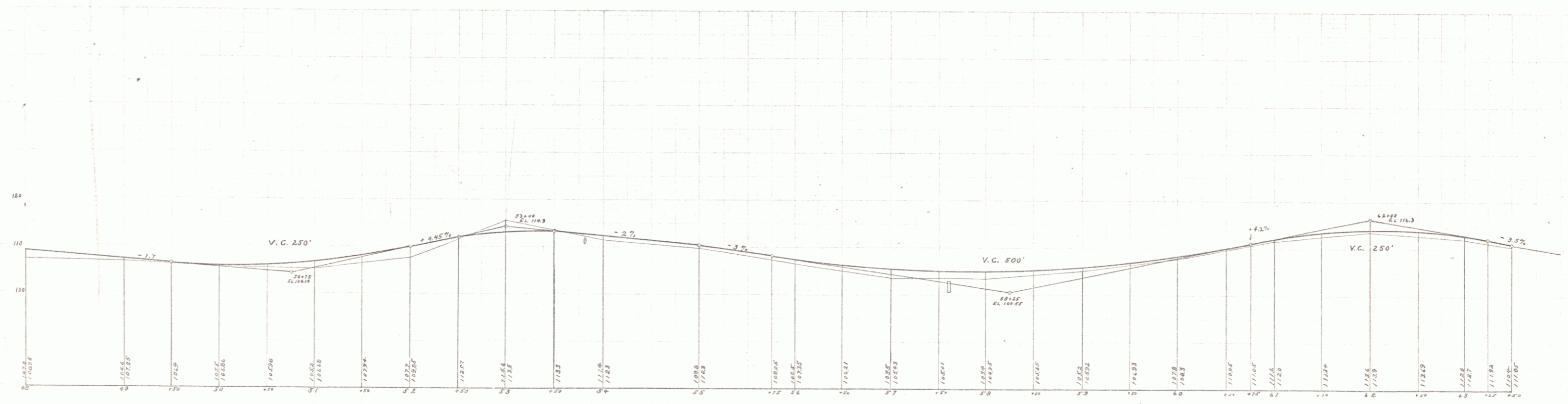
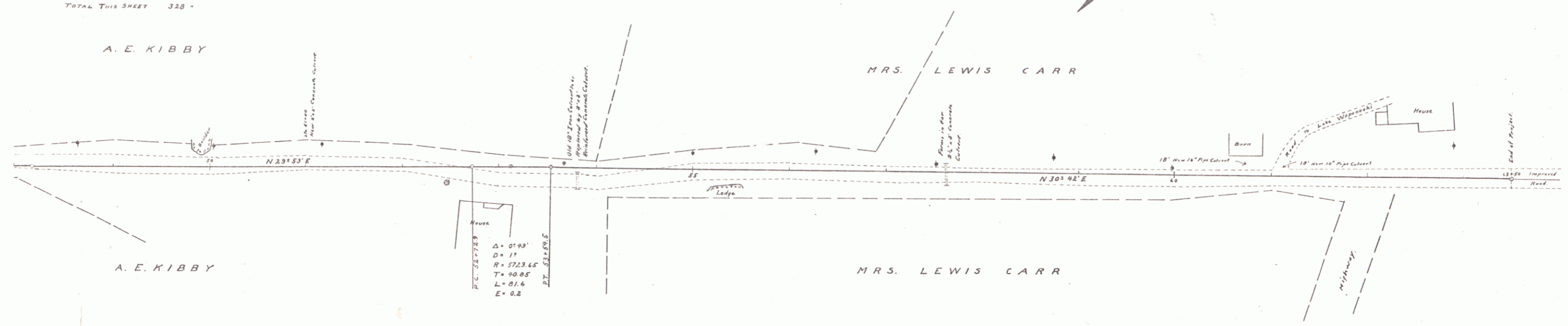
Sta 50+88 to Sta 51+12	- 24 -
- 53+69 -	53+93 - 24 -
- 56+04 -	57+74 - 80 -
- 63+02 -	63+59 - 48 -

**TOTAL THIS SHEET 328 -**

**NEW CULVERTS REQUIRED**

Sta 51+00 -	2'x2' Concrete Culvert	11.6 cu yd
- 53+81 -	3'x3' " "	15.6 " "
-	Steel	29 lbs
- 57+61 -	2'x3' Concrete Culvert	13.2 cu yd
At bridge	18" Pipe Culvert	10 ft
-	" " "	10 "

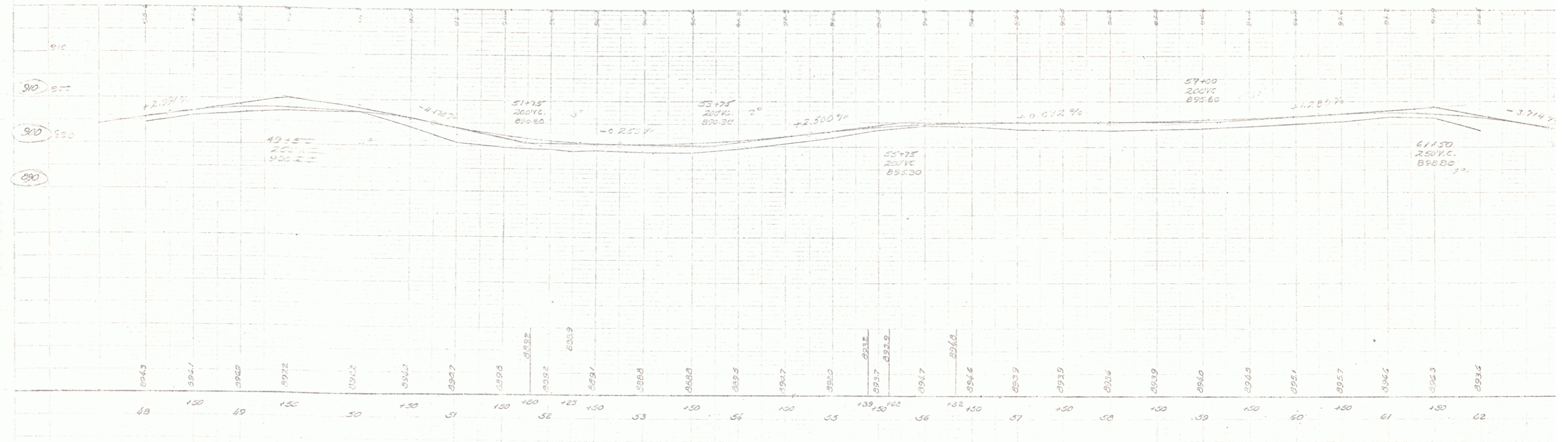
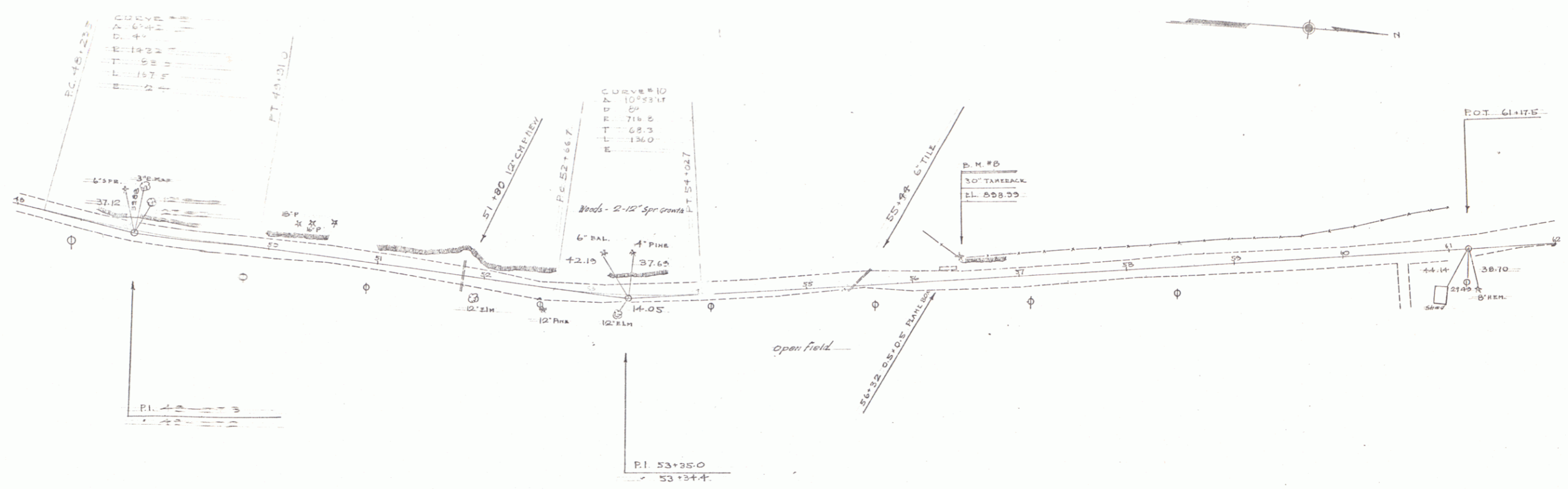
FED. ROAD DIST. NO.	STATE	FED. AID PROJ. NO.	SECTION NO.	SHEET NO.	TOTAL SHEETS
1	VT	2	1017	4	15



B.M. Bottom of base board S.W. cor. A.E. Kibby house. El. 116.36  
 N. Ely. cor. barn of Mrs. Lewis Carr. El. 111.32

Series 1-100 Filed 10/1/10

D. MACCINI 10/24



SHEET 6A