

GUARD RAIL REQUIRED

ON LEFT

Sta 50+00 to Sta 51+12	Length 24 ft
- 53+69 -	53+93 - 24 -
- 56+04 -	58+00 - 164 -

ON RIGHT

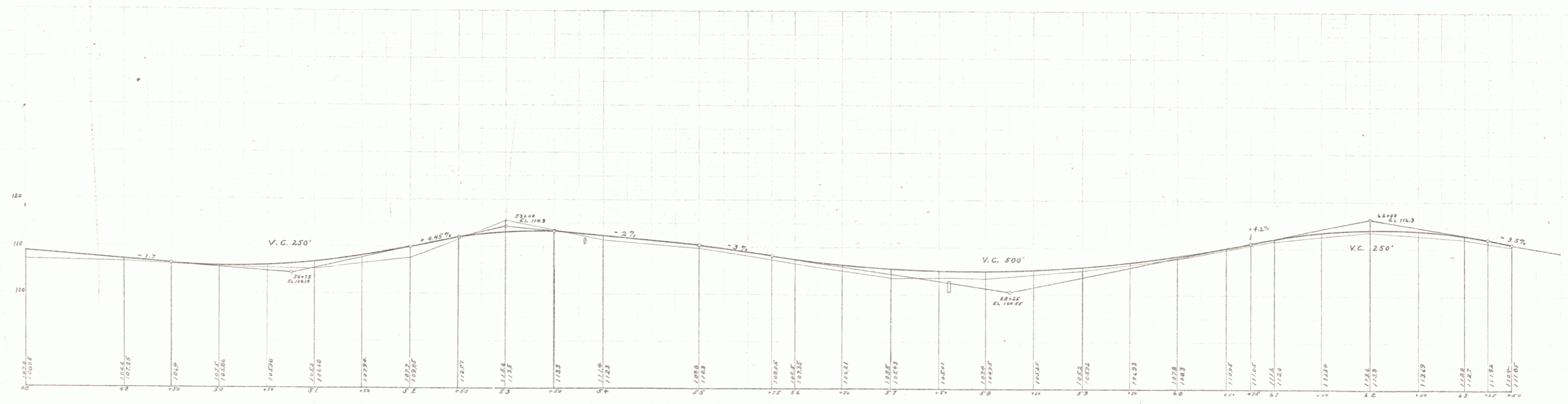
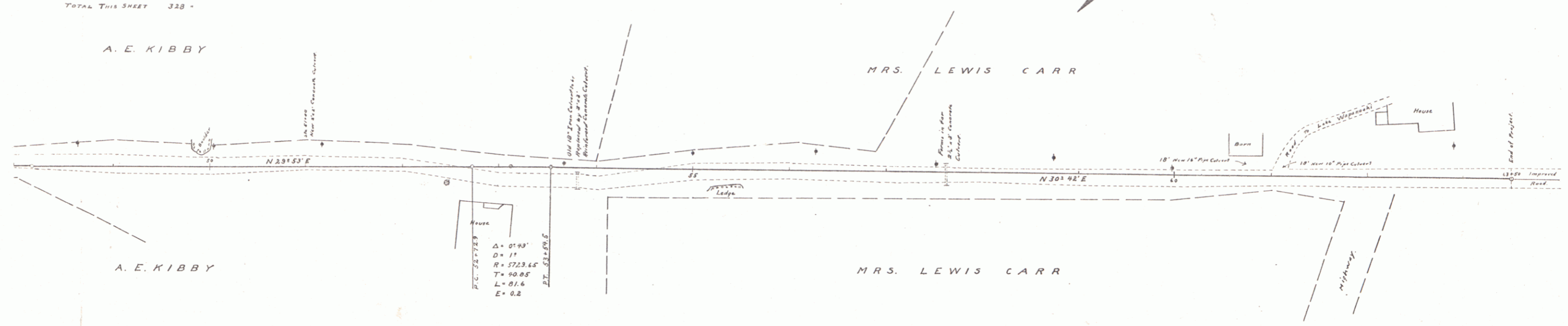
Sta 50+88 to Sta 51+12	- 24 -
- 53+69 -	53+93 - 24 -
- 56+04 -	57+74 - 80 -
- 63+02 -	63+59 - 48 -

TOTAL THIS SHEET 328 -

NEW CULVERTS REQUIRED

Sta 51+00 -	2'x2' Concrete Culvert	11.6 cu yd
- 53+81 -	3'x3' " "	15.6 " "
-	Steel	29 lbs
- 57+61 -	2'x3' Concrete Culvert	13.2 cu yd
At bridge	18" Pipe Culvert	10 ft
-	" "	10 "

FED. ROAD DIST. NO.	STATE	FED. AID PROJ. NO.	SECTION NO.	SHEET NO.	TOTAL SHEETS
1	VT	2	1017	4	15



B.M. Bottom of base board S.W. cor. A.E. Kibby house. El. 116.36
 N.E. cor. barn of Mrs. Lewis Carr. El. 111.32

Series 1-100 Filed
 1917