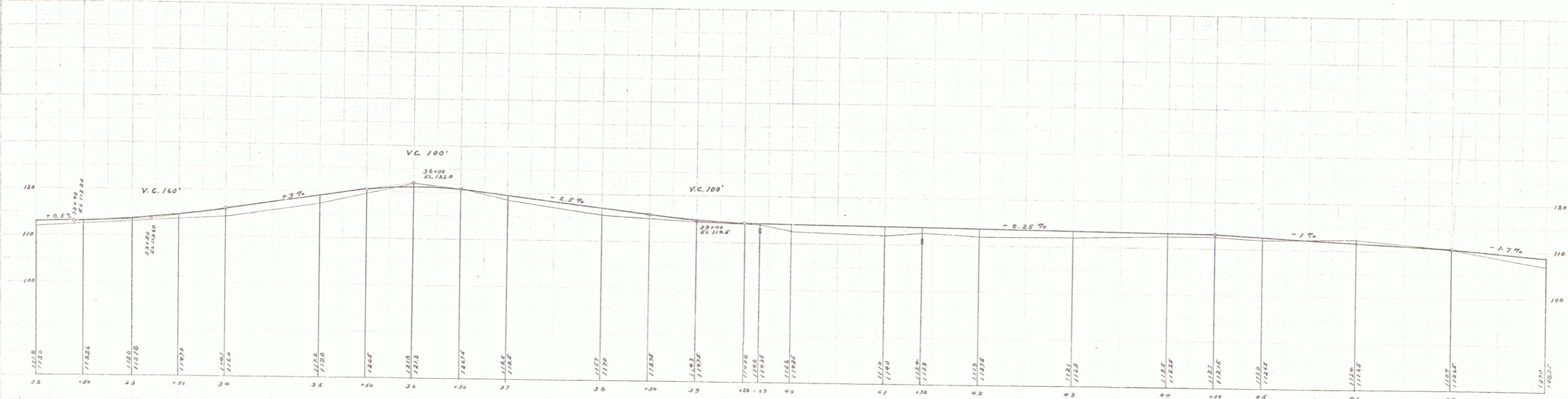
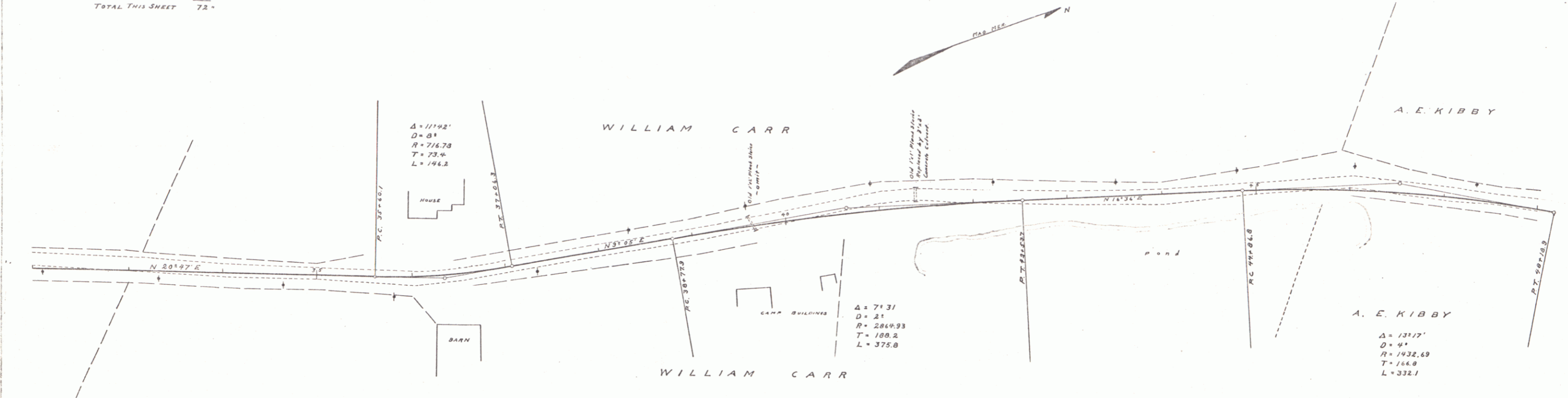


GUARD RAIL REQUIRED
ON LEFT
Sta. 41+26 to Sta. 41+50 Length 24ft
ON RIGHT
Sta. 41+00 to Sta. 41+10 " 10"
TOTAL THIS SHEET 34'

NEW CULVERTS REQUIRED
Sta. 41+38 - 3'x3' Concrete Culvert 16.6 mays.

PC	PVI	PT	STAKE	PC	PVI	PT	STAKE	TOTAL
1	2	3	4	5	6	7	8	9



B.M. Bottom of best board S.W. cor Carr's Barn El. 119.38
B.M. Spike in paper opp Sta. 46+22 El. 114.88

Series C. S. D. CIVIL
301 1/2