

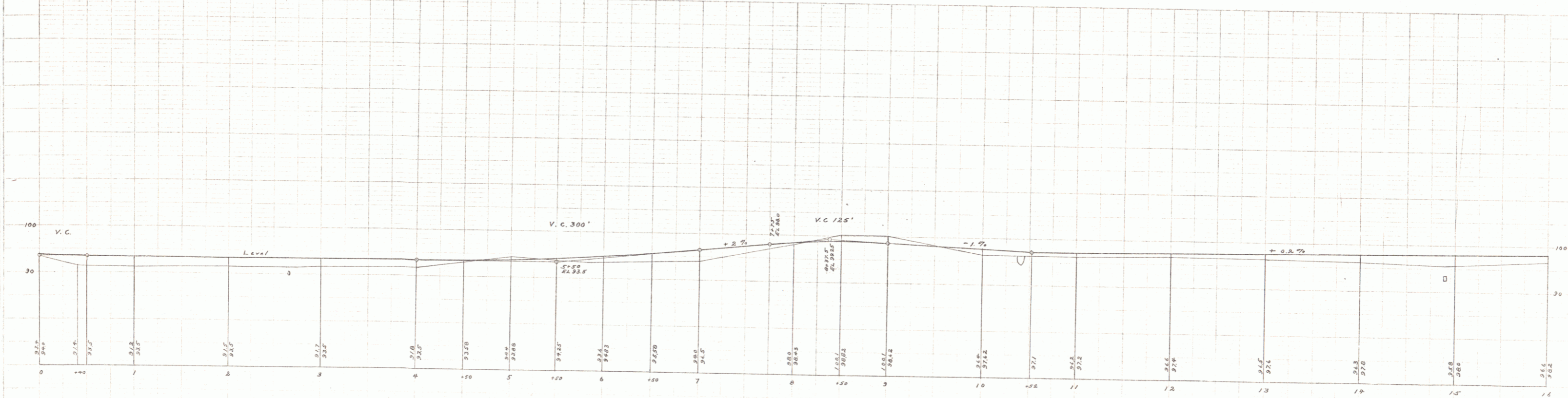
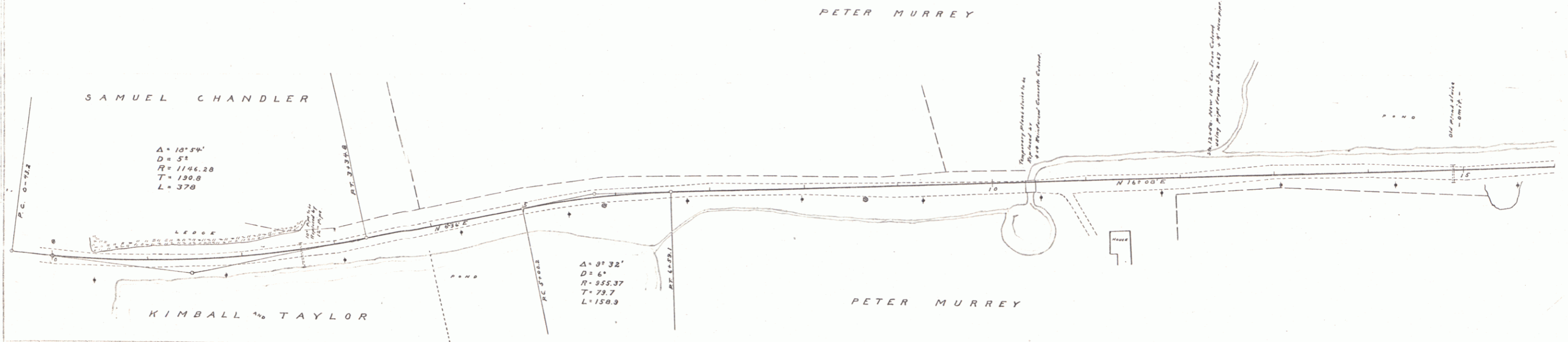
GUARD RAIL REQUIRED
ON LEFT
 Sta. 2+55 to Sta. 2+79 Length 24M
 - 10+20 - - 11+00 - 80 -
 - 12+40 - - 16+00 - 360 -
ON RIGHT
 Sta. 0+60 to Sta. 5+90 - 480
 - 6+80 - - 7+60 - 80 -
 - 10+20 - - 10+60 - 40 -
 - 12+38 - - 12+62 - 24 -
TOTAL THIS SHEET 1000

NEW CULVERTS REQUIRED
 Sta. 2+6 - 12" Pipe Culvert 30 ft
 Concrete Headwalls 1 cu yd
 - 12+52 - 10" Pipe Culvert 9 ft
 Concrete Headwalls 1 cu yd
 - 10+92 - 4" x 14" Culvert Concrete 18 - -
 Steel 150 lbs

NO. ROAD DIST. STA.	NO. STA.	NO. MID	NO. PITCH	NO. EXPT	TOTAL
#	VT.	0	1/2	3	12

100-987
 100-988
 100-989
 100-990
 100-991
 100-992
 100-993
 100-994
 100-995
 100-996
 100-997
 100-998
 100-999
 100-1000

100-1001
 100-1002
 100-1003
 100-1004
 100-1005
 100-1006
 100-1007
 100-1008
 100-1009
 100-1010



B.M. Bottom of baseboard S.W. cor Kimball & Taylor house EL. 100.00 (Assumed)
 B.M. Natch in rear of spruce opp Sta. 4+90 EL. 95.60
 B.M. Bottom of baseboard S.E. cor Peter Murrey house EL. 102.39

James K. No. 8 Field
 100-1011