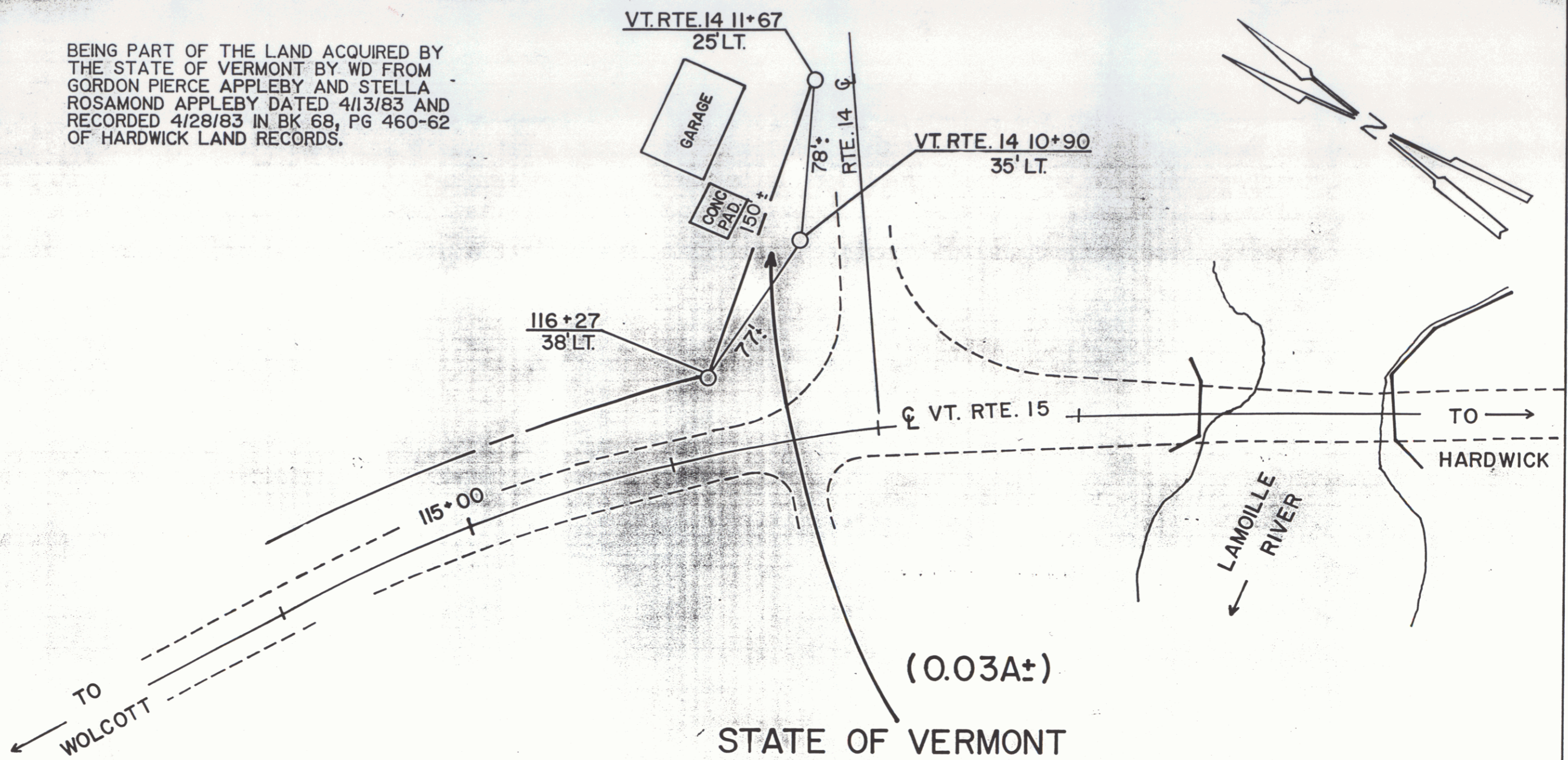


BEING PART OF THE LAND ACQUIRED BY THE STATE OF VERMONT BY WD FROM GORDON PIERCE APPLEBY AND STELLA ROSAMOND APPLEBY DATED 4/13/83 AND RECORDED 4/28/83 IN BK 68, PG 460-62 OF HARDWICK LAND RECORDS.



(0.03A±)
 STATE OF VERMONT
 TO
 GORDON PIERCE APPLEBY
 & STELLA ROSAMOND APPLEBY

RF: BRF 030-2(5)S *VH4 VT 15*

STATE OF VERMONT
 AGENCY OF TRANSPORTATION

SHEET 4A

TOWN OF HARDWICK
 3

