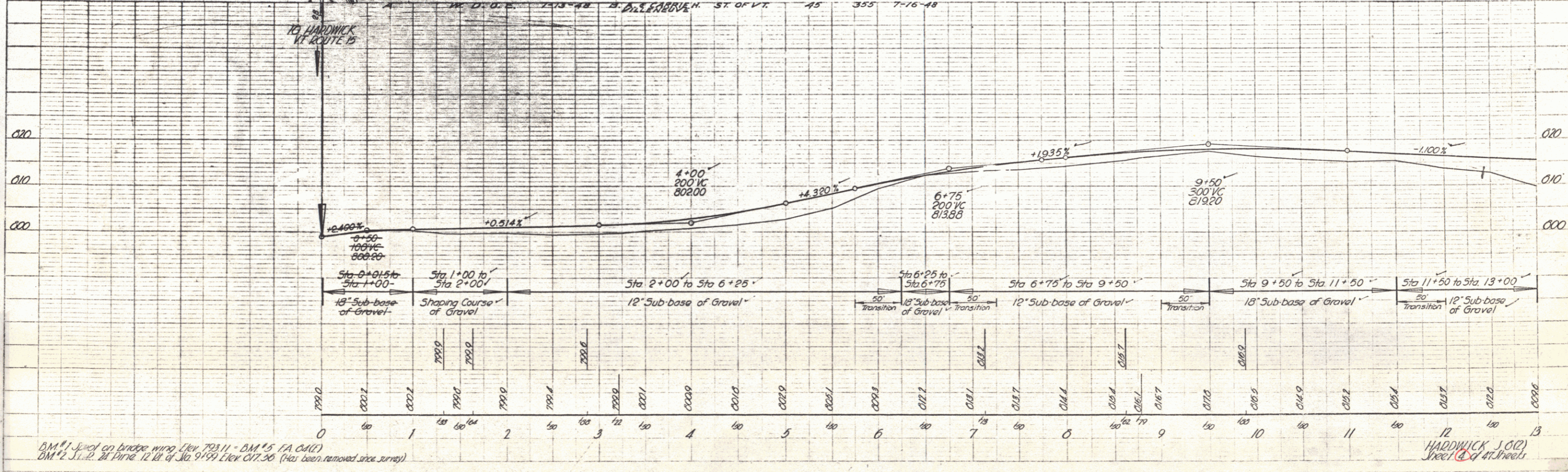
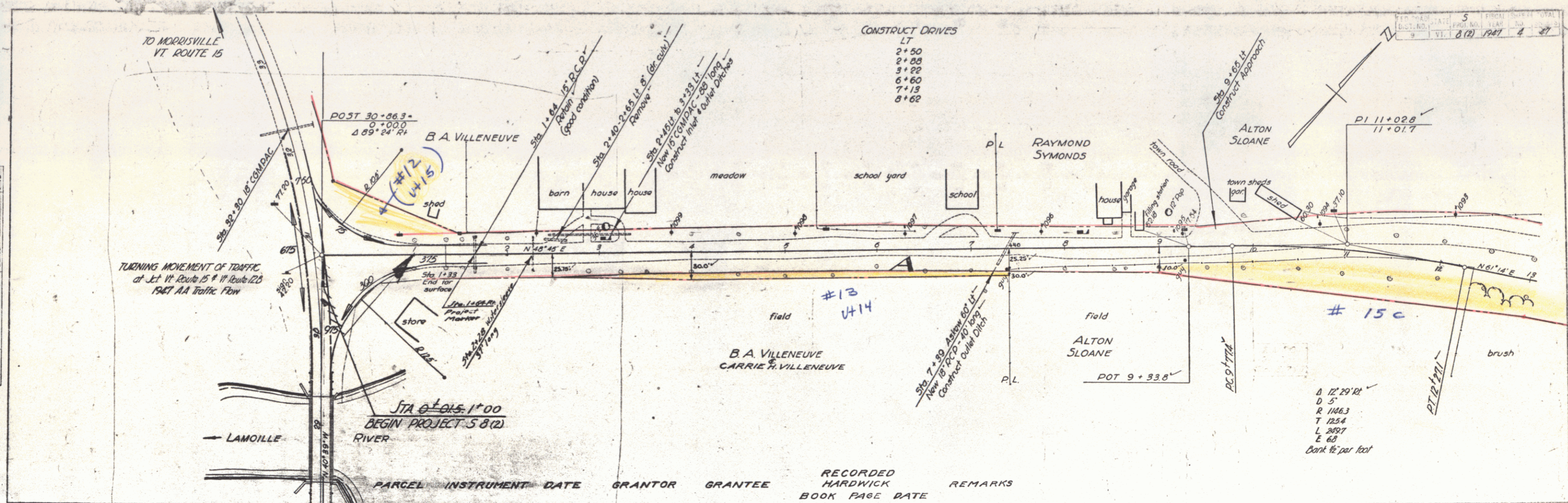


PLAN  
 DRAWN BY  
 CHECKED BY  
 DATE  
 9-27-48  
 7-18

PROFILE  
 DRAWN BY  
 CHECKED BY  
 DATE  
 9-27-48  
 7-18



BM #1 - level on bridge wing Elev. 793.11 - BM #5 (A Cut(1))  
 BM #2 - level on Pine 12 ft of Sta 9+99 Elev. 817.36 (this corner removed since survey)

5  
 8 (2) 1947 4 27

D 12' 29' 18"  
 D 5'  
 R 146.3  
 T 125.4  
 L 282.7  
 E 68  
 Cant 16 per foot

HADDWICK S (12)  
 Street 8 of 12 sheets