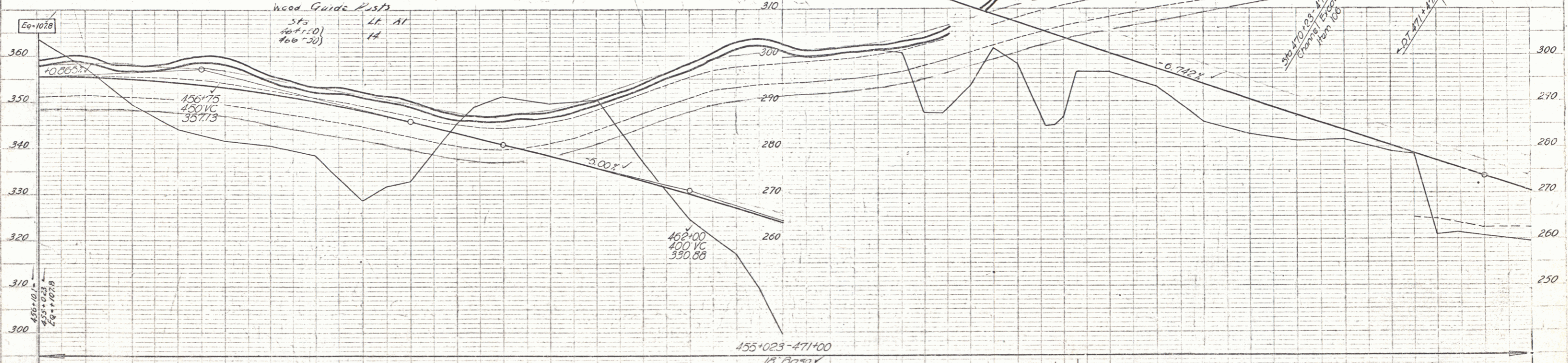
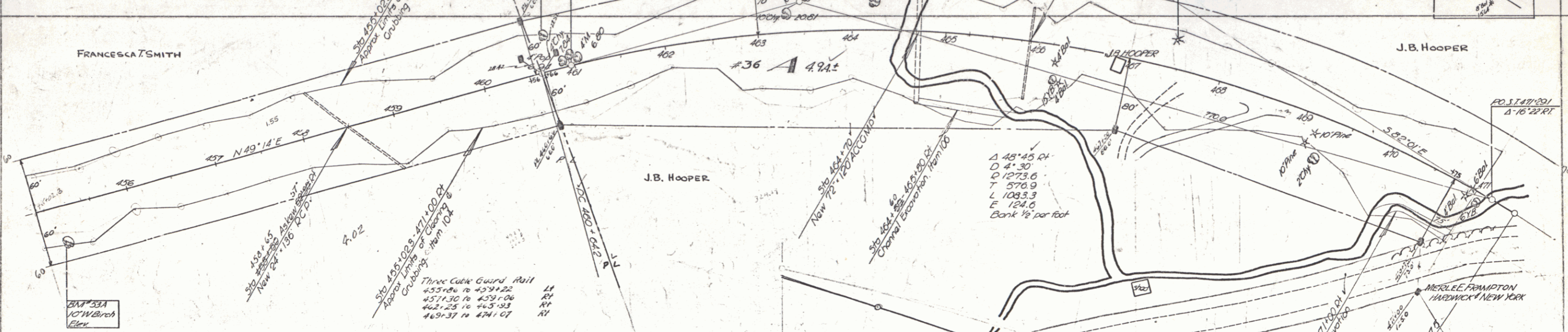
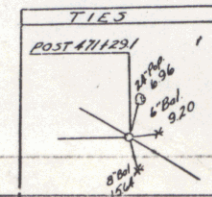


PARCEL INSTRUMENT DATE GRANTOR GRANTEE RECORDED
 #36 A W.D.O.S. 6-24-19 J.B. HOOPER ST. OF VT. 24 54 9-28-19

Control of section of old highway between
 station 446+88 RT and station 470+87 RT
 relinquished to town of Woodbury
 Records page 173 of Deed Records
 January 5, 1951

FILE NO. STATE PROJ. NO. SHEET NO. TOTAL SHEETS
 1 1 1 1



Station	Elevation	Notes
456+00	353.6	BM 53A 10' Birch Elev
456+10	357.3	
456+20	349.5	
456+30	344.1	
456+40	341.7	
456+50	340.7	
456+60	338.7	
456+70	328.7	
456+80	327.9	
456+90	322.9	
457+00	325.4	
457+10	325.1	
457+20	321.3	
457+30	324.8	
457+40	320.8	
457+50	321.2	
457+60	324.5	
457+70	321.0	
457+80	320.4	
457+90	321.8	
458+00	322.5	
458+10	323.2	
458+20	320.2	
458+30	324.8	
458+40	326.3	
458+50	326.9	
458+60	326.4	
458+70	326.7	
458+80	325.3	
458+90	325.8	
459+00	325.3	
459+10	325.8	
459+20	325.3	
459+30	325.8	
459+40	325.3	
459+50	325.8	
459+60	325.3	
459+70	325.8	
459+80	325.3	
459+90	325.8	
460+00	325.3	
460+10	325.8	
460+20	325.3	
460+30	325.8	
460+40	325.3	
460+50	325.8	
460+60	325.3	
460+70	325.8	
460+80	325.3	
460+90	325.8	
461+00	325.3	
461+10	325.8	
461+20	325.3	
461+30	325.8	
461+40	325.3	
461+50	325.8	
461+60	325.3	
461+70	325.8	
461+80	325.3	
461+90	325.8	
462+00	325.3	
462+10	325.8	
462+20	325.3	
462+30	325.8	
462+40	325.3	
462+50	325.8	
462+60	325.3	
462+70	325.8	
462+80	325.3	
462+90	325.8	
463+00	325.3	
463+10	325.8	
463+20	325.3	
463+30	325.8	
463+40	325.3	
463+50	325.8	
463+60	325.3	
463+70	325.8	
463+80	325.3	
463+90	325.8	
464+00	325.3	
464+10	325.8	
464+20	325.3	
464+30	325.8	
464+40	325.3	
464+50	325.8	
464+60	325.3	
464+70	325.8	
464+80	325.3	
464+90	325.8	
465+00	325.3	
465+10	325.8	
465+20	325.3	
465+30	325.8	
465+40	325.3	
465+50	325.8	
465+60	325.3	
465+70	325.8	
465+80	325.3	
465+90	325.8	
466+00	325.3	
466+10	325.8	
466+20	325.3	
466+30	325.8	
466+40	325.3	
466+50	325.8	
466+60	325.3	
466+70	325.8	
466+80	325.3	
466+90	325.8	
467+00	325.3	
467+10	325.8	
467+20	325.3	
467+30	325.8	
467+40	325.3	
467+50	325.8	
467+60	325.3	
467+70	325.8	
467+80	325.3	
467+90	325.8	
468+00	325.3	
468+10	325.8	
468+20	325.3	
468+30	325.8	
468+40	325.3	
468+50	325.8	
468+60	325.3	
468+70	325.8	
468+80	325.3	
468+90	325.8	
469+00	325.3	
469+10	325.8	
469+20	325.3	
469+30	325.8	
469+40	325.3	
469+50	325.8	
469+60	325.3	
469+70	325.8	
469+80	325.3	
469+90	325.8	
470+00	325.3	
470+10	325.8	
470+20	325.3	
470+30	325.8	
470+40	325.3	
470+50	325.8	
470+60	325.3	
470+70	325.8	
470+80	325.3	
470+90	325.8	
471+00	325.3	

456+101 = 455+023 24+1078
 456 BM 53A S1R 12" W Birch 35' Lt. Sta. 460+72 Elev. 355.10
 457 BM 53A S1R 18" Y Birch 25' Lt. Sta. 462+15 Elev. 300.59
 458 BM 56A S1R 12" Pine 30' Lt. Sta. 467+63 Elev. 287.05

WOODBURY-HARDWICK
 Series No. 144 (4)
 Sheet 50 of 50