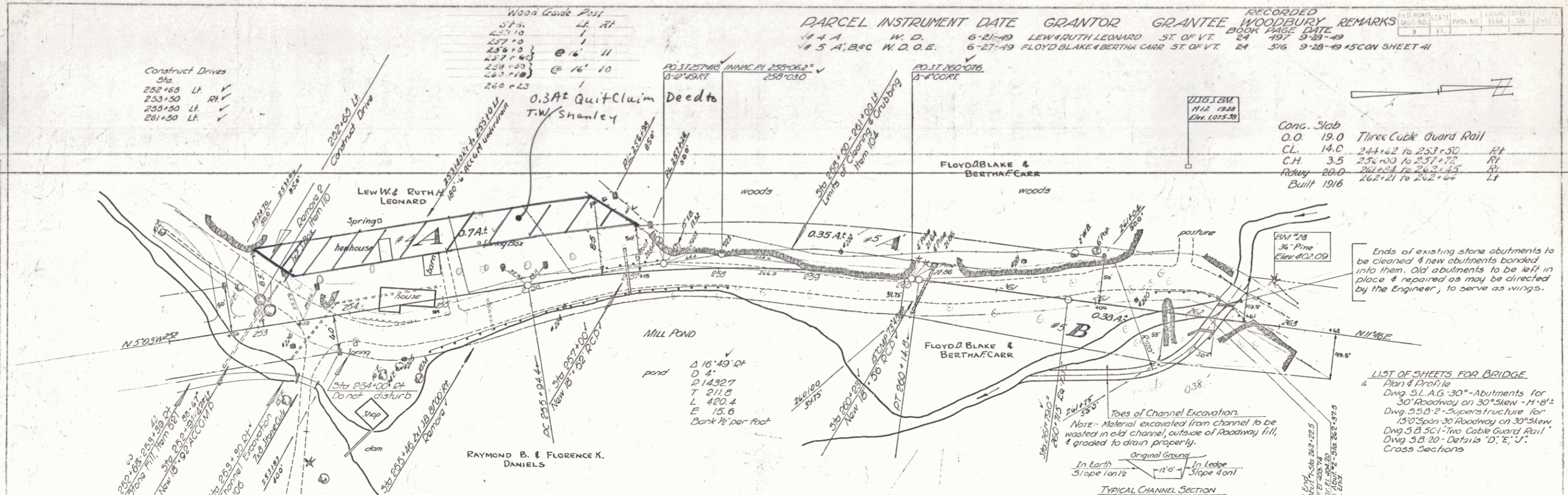


RECORDED PARCEL INSTRUMENT DATE GRANTOR GRANTEE WOODBURY REMARKS
 # 4 A W. D. 6-21-49 LEW & RUTH LEONARD ST. OF VT. 24 497 9-28-49
 # 5 A, B & C W. D. O. E. 6-27-49 FLOYD BLAKE & BERTHA CARR ST. OF VT. 24 516 9-28-49 45 CON SHEET #1

Construct Drives
 Sta 252+65 Lt. ✓
 253+50 Rt. ✓
 253+50 Lt. ✓
 261+50 Lt. ✓

Wood Guide Post
 Sta. 257+0
 257+0
 257+0 } @ 16" 11
 257+0 }
 257+0 }
 260+23 } @ 16" 10



Conc. Slab
 O.O. 19.0
 C.L. 14.0
 C.H. 3.5
 R.W. 20.0
 Built 1916

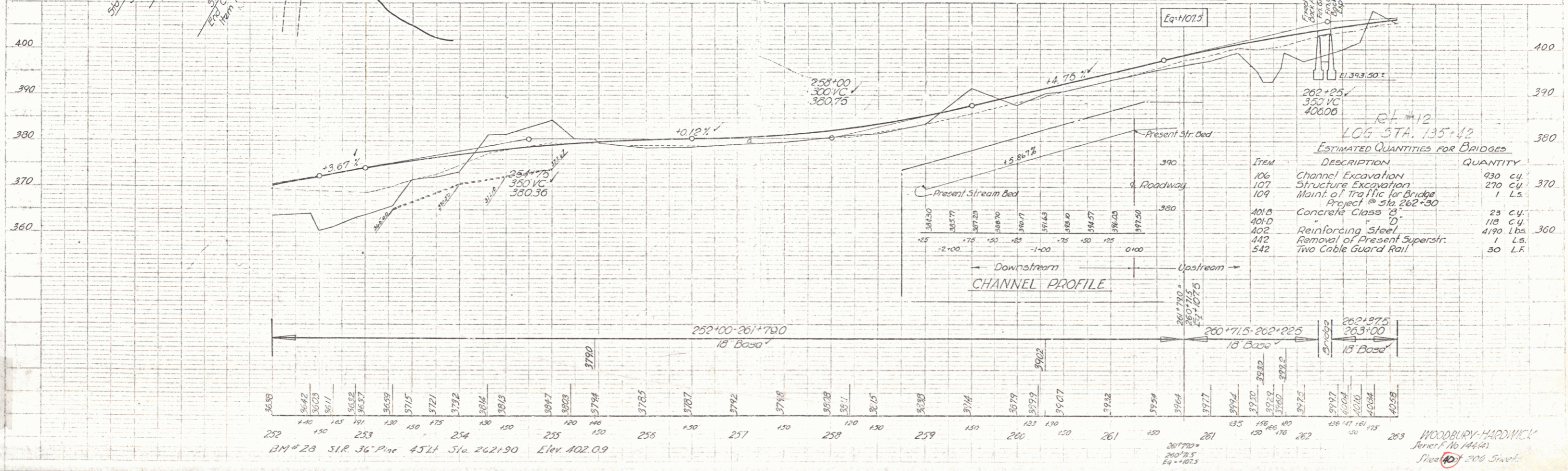
Three Cable Guard Rail
 24+62 to 253+50 Rt.
 253+50 to 257+75 Rt.
 262+21 to 262+64 Lt.

Ends of existing stone abutments to be cleaned & new abutments bonded into them. Old abutments to be left in place & repaired as may be directed by the Engineer, to serve as wings.

LIST OF SHEETS FOR BRIDGE
 Plan & Profile
 Dwg. S.L.A.G. 30'-Abutments for 30' Roadway on 30' Skew - 11' 11"
 Dwg. S.B. 2-Superstructure for 150' span 30' Roadway on 30' Skew
 Dwg. S.B. 5C1-Two Cable Guard Rail
 Dwg. S.B. 20-Details 'D', 'E', 'J', Cross Sections

Toes of Channel Excavation
 Note: Material excavated from channel to be wasted in old channel, outside of roadway fill, & graded to drain properly.

TYPICAL CHANNEL SECTION



ESTIMATED QUANTITIES FOR BRIDGES

ITEM DESCRIPTION QUANTITY

WOODBURY-HARDWICK
 Gen'l. No. 144 (40)
 Sheet No. 206 Street