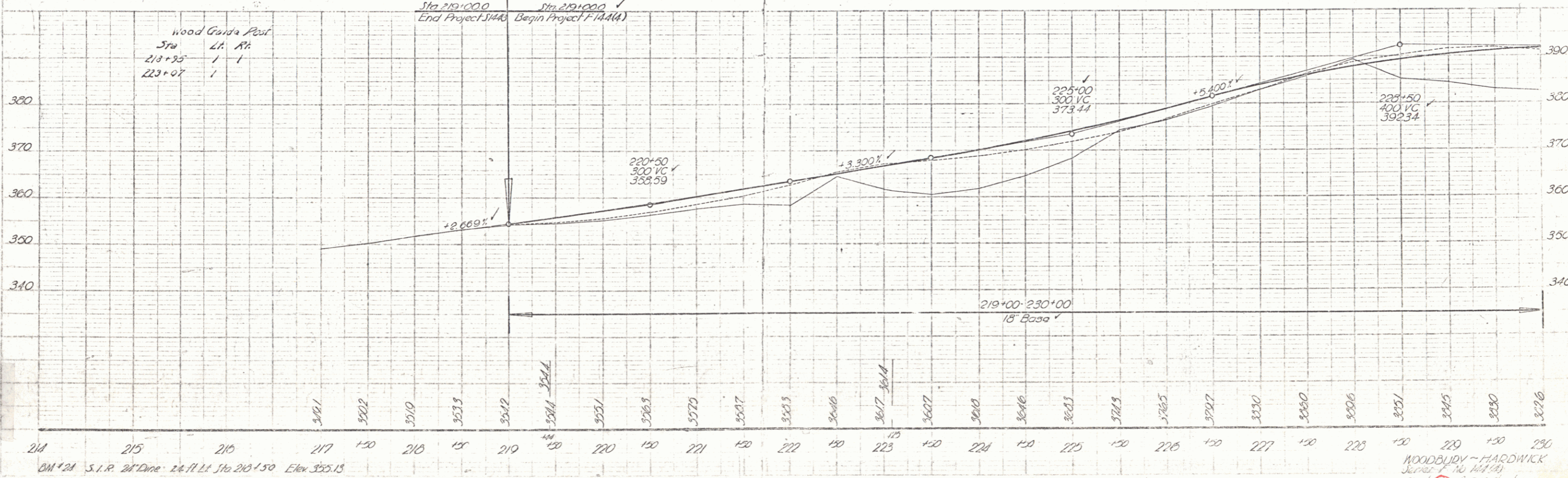
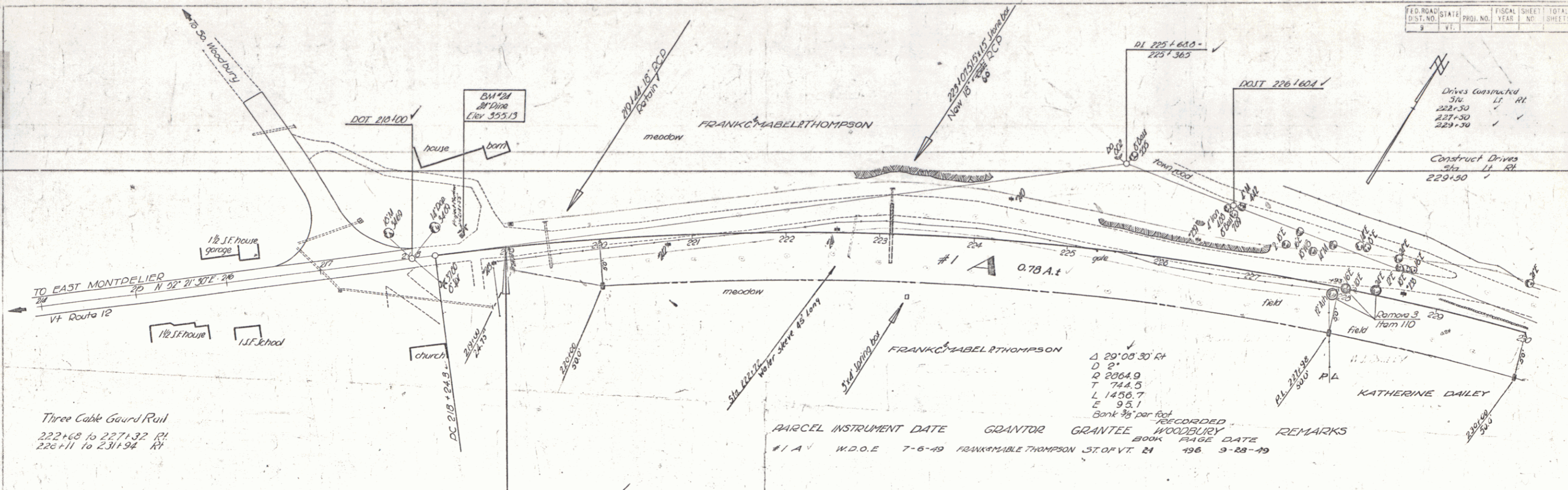


FED. ROAD DIST. NO.	STATE	PROJ. NO.	FISCAL YEAR	SHEET NO.	TOTAL SHEETS
9	Vt.				



Three Cable Guard Rail  
222+68 to 227+32 RT  
226+11 to 231+94 RT

Wood Guard Rail  
Sta L.R. RT  
218+25 / 1 / 1  
223+07 / 1 / 1

BM #24 S.I.R. 24" Dime 2 1/2" H. L.L. Sta 218+50 Elev. 355.15

WOODBURY - HARDWICK  
Series F No. 104 (A)  
Sheet 57 of 208 Sheets