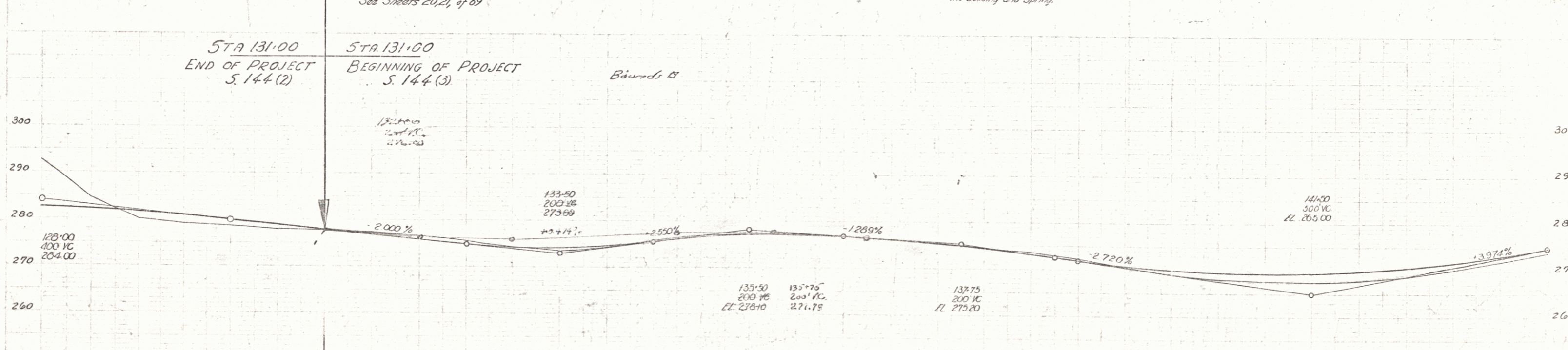
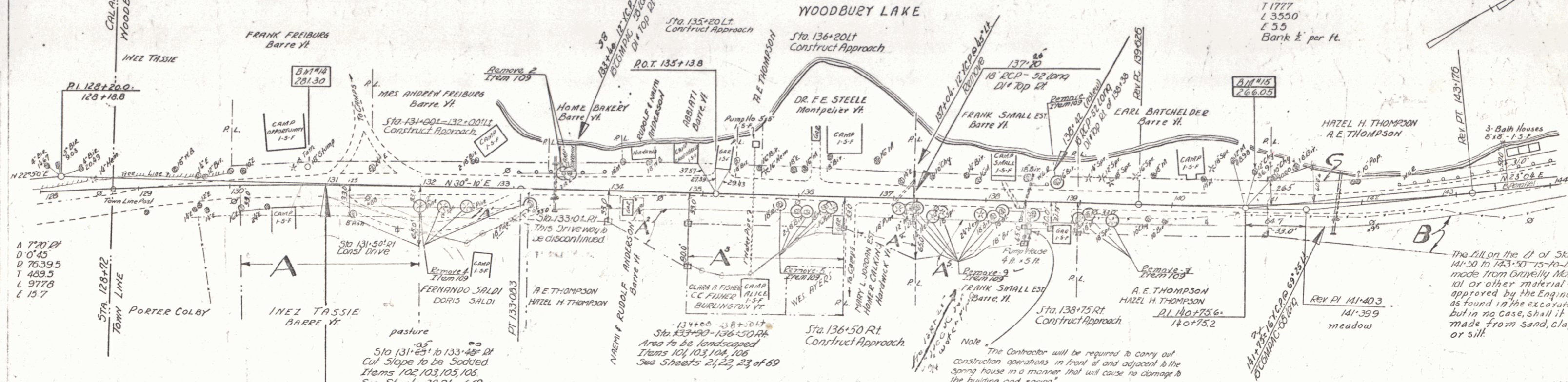


PARCEL INSTRUMENT	DATE	GRANTOR	GRANTEE	RECORDED	REMARKS
-------------------	------	---------	---------	----------	---------

A	W.D.	1-5-45	INEZ TASSIE	ST OF VT	BOOK PAGE DATE
A'	W.D.O.E	2-5-46	FERNANDO I DORIS SALDI	ST OF VT	24 122 1-18-45
A'BC	W.D.O.E	1-15-45	A.E. HAZEL H. THOMPSON	ST OF VT	24 210 2-8-45
A'	W.D.	1-8-45	C.C. CLARK R. FINNER	ST OF VT	24 116/17 1-18-45
A'S	W.D.	1-15-45	MICHAEL L. J. JORDAN EST	ST OF VT	24 118-119 1-18-45
A''	CONVEY.	12-7-44	FRANK SMALL EST	ST OF VT	24 98-105 12-16-44
A''	W.D.O.E.	2-13-45	RUDOLF W. HEN ANDERSON	ST OF VT	24 147 5-19-45



Station	Elevation	Notes
128	282.50	
129	281.50	
130	280.00	
131	279.00	
132	278.00	
133	277.00	
134	276.00	
135	275.00	
136	274.00	
137	273.00	
138	272.00	
139	271.00	
140	270.00	
141	269.00	
142	268.00	
143	267.00	
144	266.00	

S. 144 (3) 5 69

Δ 7'05" / 1
D 2"
R 20649
T 1777
L 3550
E 35
Bank 1/2 per ft.

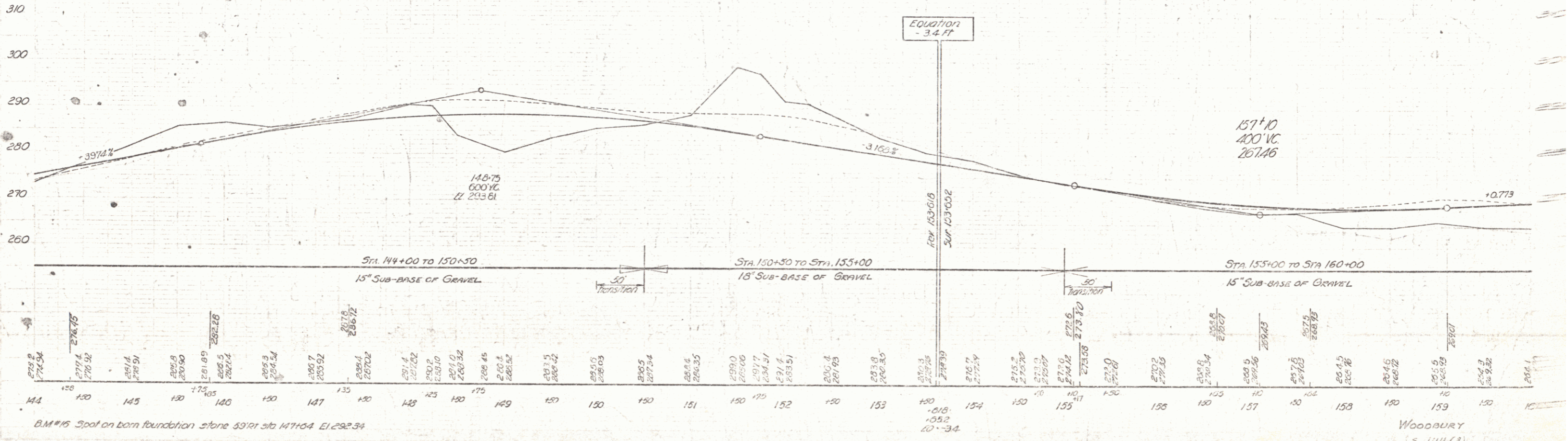
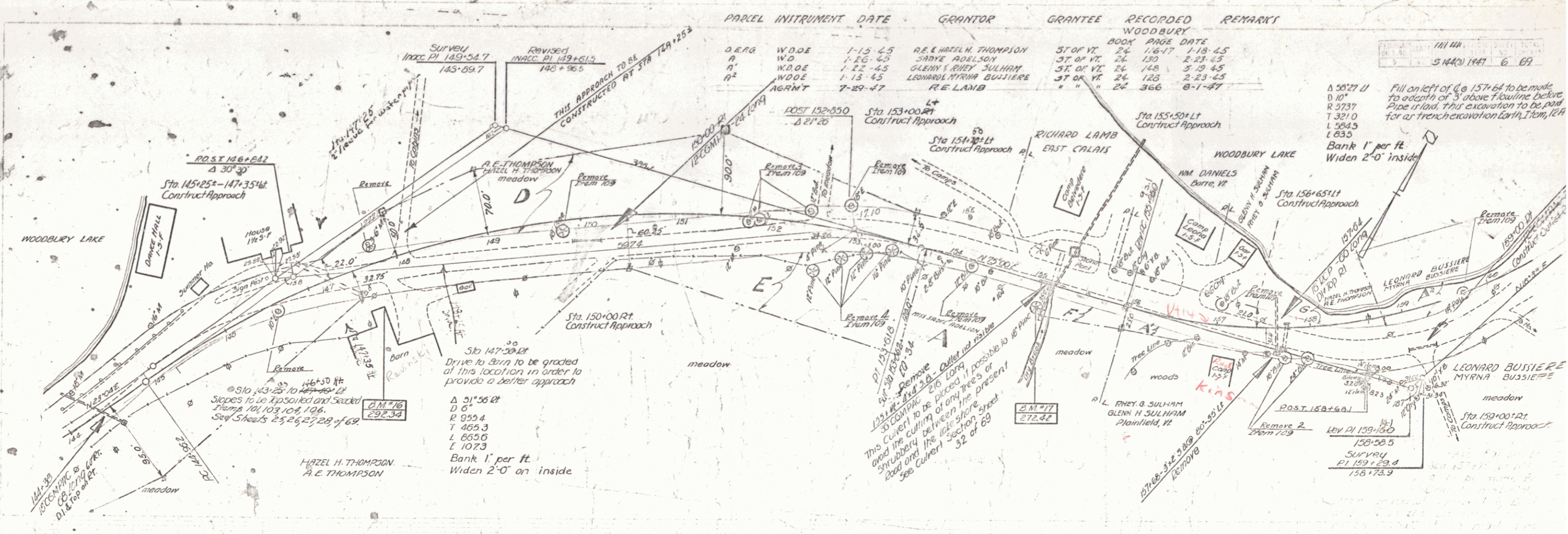
The fill on the 1/2 of Sta. 141+50 to 143+50 is to be made from Crapelly material or other material approved by the Engineer as found in the excavation, but in no case shall it be made from sand, clay, or silt.

Note: The Contractor will be required to carry out construction operations in front of and adjacent to the Spring house in a manner that will cause no damage to the building and spring.

WOODBURY
S. 144 (3)
Sheet 5 of 69 sheets

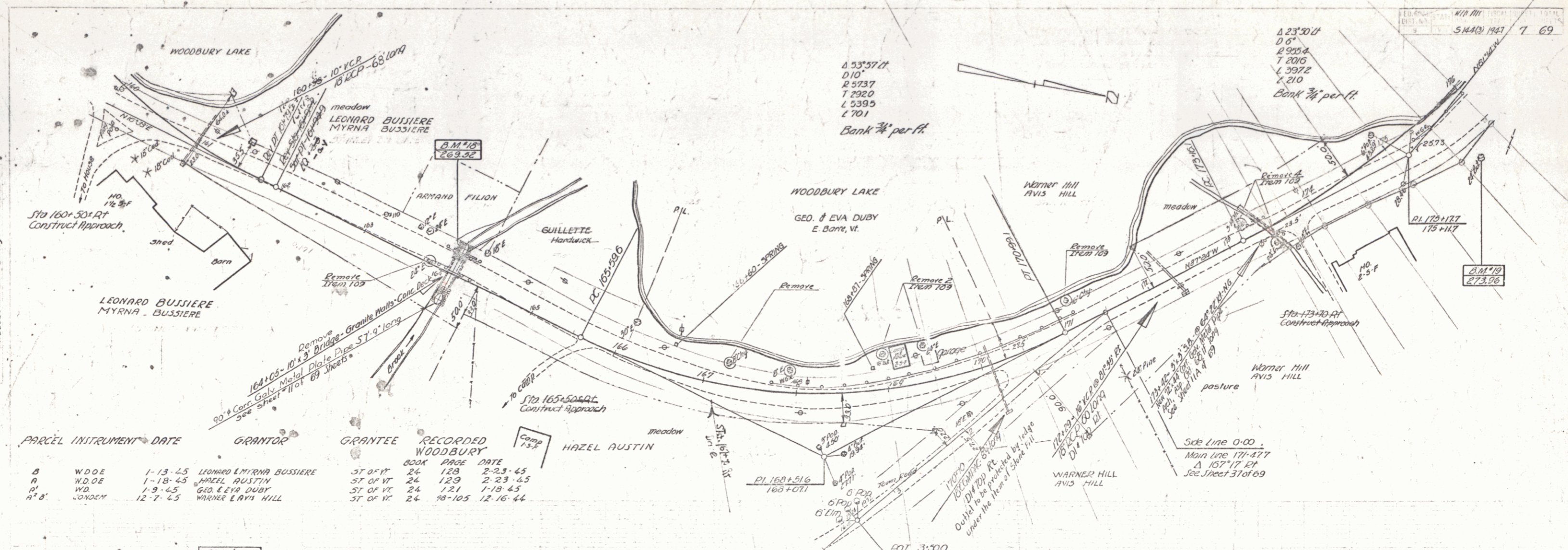
PARCEL	INSTRUMENT DATE	GRANTOR	GRANTEE	RECORDED	REMARKS
D.E.G.	1-15-45	R.E. HAZEL H. THOMPSON	ST. OF VT.	24	118-45
W.D.	1-26-45	JARVE ADOLSON	ST. OF VT.	24	130
A	1-22-45	GLENN H. RHEY & JULIAM	ST. OF VT.	24	148
A ²	1-13-45	LEONARD MYRNA BUSSIERE	ST. OF VT.	24	123
AGRM T	7-29-47	R.E. LAMB	ST. OF VT.	24	366

WOODBURY
S. 144(3)
6 69

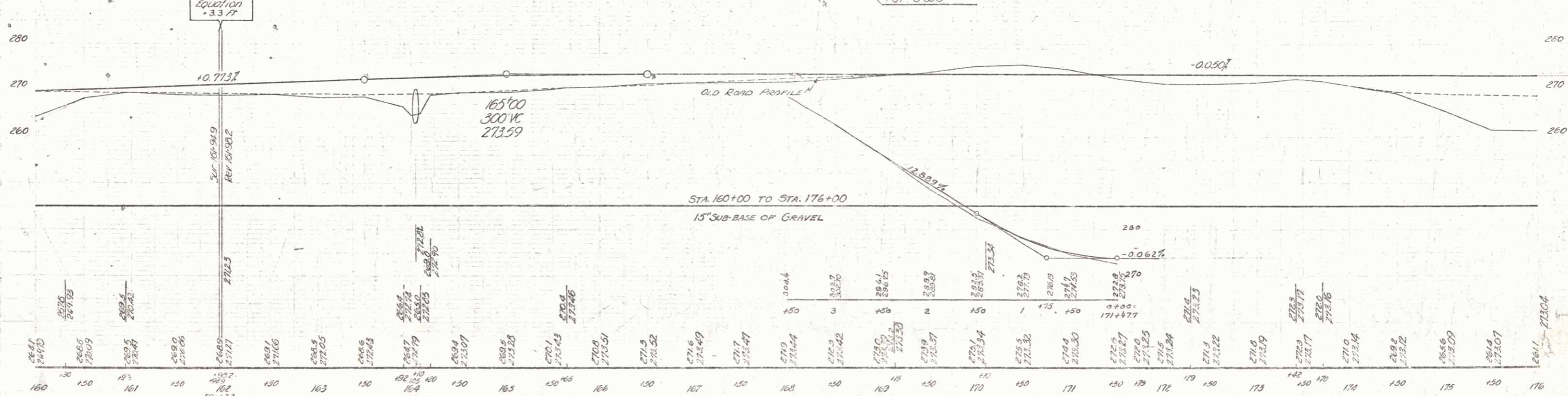


WOODBURY
S. 144(3)
Sheet 6 of 6 sheets

ED. P. STANLEY
 DIST. STANLEY
 5 MAR 1947 7 69



PARCEL	INSTRUMENT	DATE	GRANTOR	GRANTEE	RECORDED	BOOK	PAGE	DATE
B	W.D.O.E.	1-13-45	LEONARD MYRNA BUSSIERE	ST. OF VT.	24	129	2-23-45	
A	W.D.O.E.	1-18-45	HAZEL AUSTIN	ST. OF VT.	24	129	2-23-45	
P	W.D.	1-9-45	GEO. E. EVA DUBY	ST. OF VT.	24	121	1-18-45	
H.B.	CONDENY	12-7-45	WARNER LEVIN HILL	ST. OF VT.	24	98-105	12-16-44	

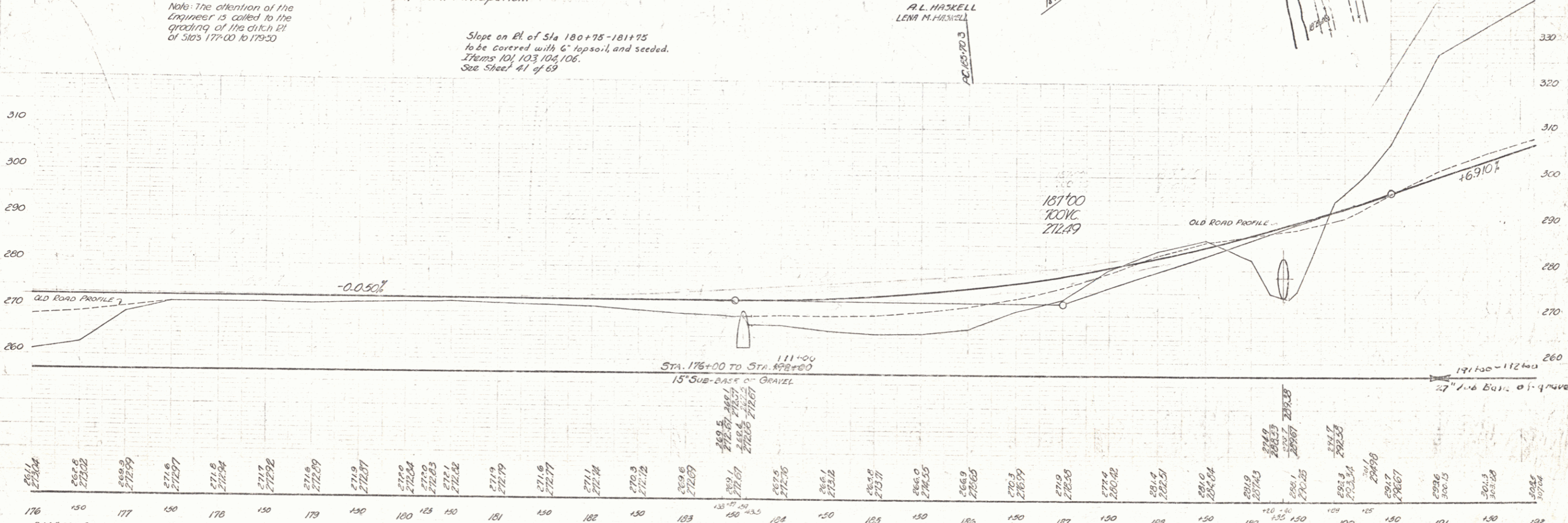
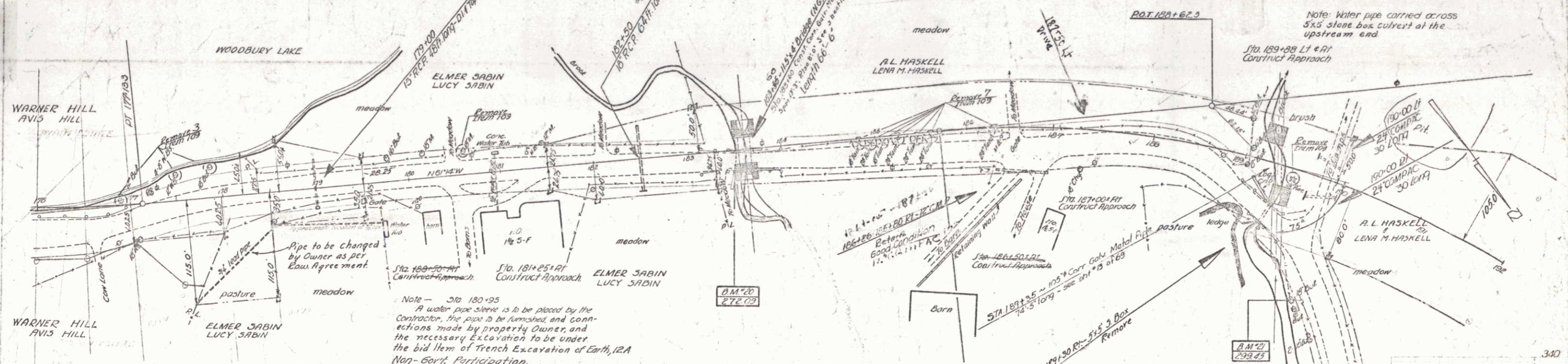


B.M. #18 - SPOT ON CONC BRIDGE CURB - 25' LK 163+95 - ELEV 269.52
 B.M. #19 - SPIKE IN TRUNK OF 68 BUTTERNUT 71 FT 175+09 - ELEV 273.96

WOODBURY
 S. 144 (2)
 Sheet 7 of 9 sheets

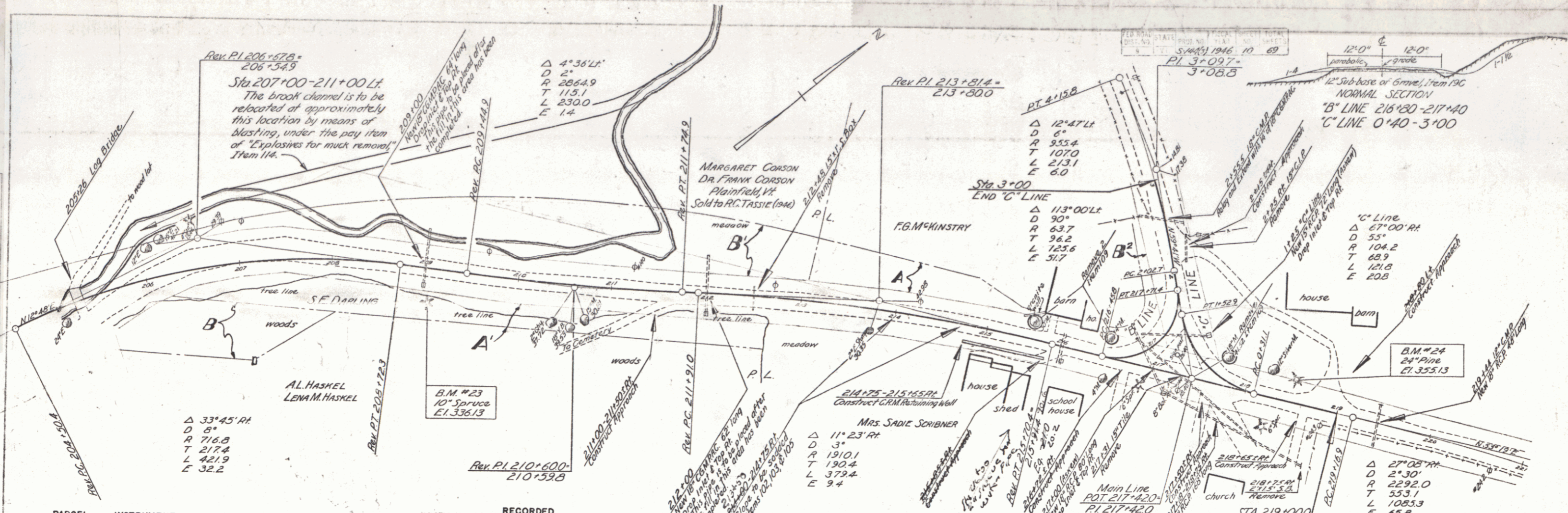
PARCEL INSTRUMENT DATE	GRANTOR	GRANTEE	RECORDED BOOK	REMARK
C CONDERT 12-7-44	WARNER & AVIS HILL	ST OF VT	24	12-16-44
R.C.D CONDERT 12-7-44	ELMER & LUCY SABIN	ST OF VT	24	12-16-44
W.D.O.E. 1-13-45	A.L. & LENA M. HASKELL	ST OF VT	24	1-18-45

RECORD DATE 5 MAR 1947 8 69

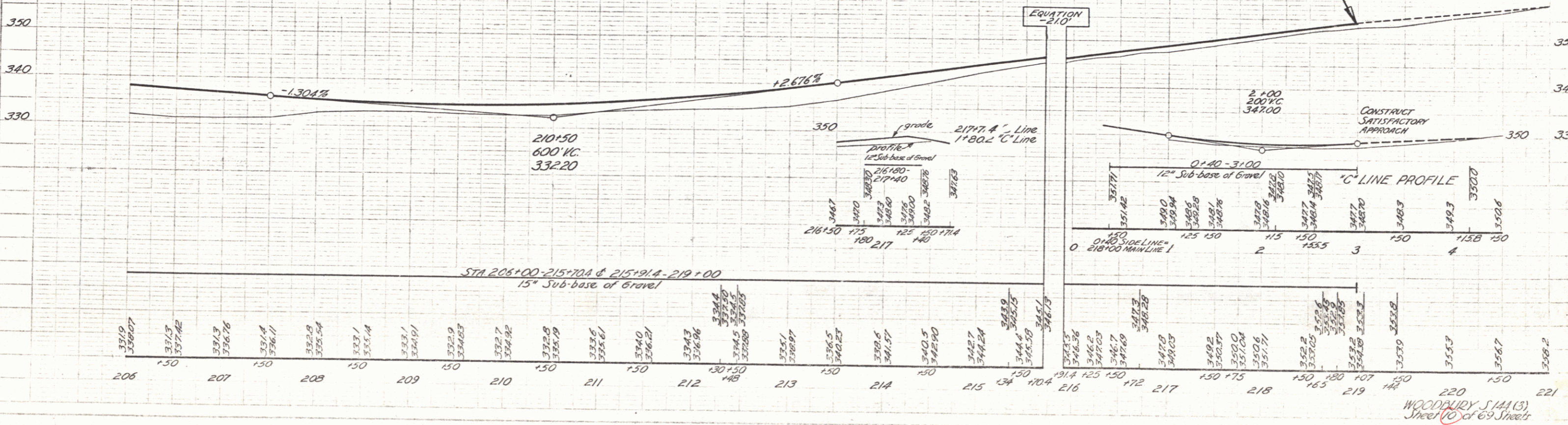


Station	Elevation
176	273.04
177	272.59
178	272.24
179	272.09
180	272.04
181	272.00
182	272.00
183	272.00
184	272.00
185	272.00
186	272.00
187	272.00
188	272.00
189	272.00
190	272.00
191	272.00
192	272.00

WOODBURY
S. 144 (3)
Sheet 8 of 8 sheets



PARCEL	INSTRUMENT	DATE	GRANTOR	GRANTEE	RECORDED WOODBURY	REMARKS
B	W.D.O.E.	1-13-45	A.L. & LENA M. HASKELL	ST. OF VT.	24	114-115 1-18-45
B'	CONDEM.	12-7-45	FRANK & MARGARET CORSON	" "	24	98-105 12-16-44
A'	O.C.D.	1-15-45	SAMUEL E. DARLING	" "	21	224 1-18-45
ABB'	W.D.O.E.	5-27-46	FRANCIS C. MCKINSTRY	" "	24	264 6-14-46



PLAN
SCALE 1" = 40'
DATE 1946.10.69
BY J. W. WOODBURY

PROFILE
SCALE 1" = 40'
DATE 1946.10.69
BY J. W. WOODBURY

WOODBURY 5144 (3)
Sheet 10 of 69 Sheets

PARCEL INSTRUMENT DATE

GRANTOR

GRANTEE RECORDED REMARKS
WOODBURY

8	W.D.G.	1-13-45	A.L. LENA M. HASKELL
5	CONDEM.	12-7-45	FRANK & MARGARET CORSON
9	Q.C.D.	1-15-45	SHARVILL E. DARLING

ST OF VT	BOOK	PAGE	DATE
24	116-115	1-18-45	
24	98-105	12-16-44	
21	224	1-18-45	

MUCK EXCAVATION, ITEM 115, may be washed on the property of R.C. TASSIE left of sta 207+00-213+00. New location of brook may be moved further away from road to provide sufficient area for Muck Excavation Waste.

Sta 207+50 LT - Sta 211+50 LT
The brook channel to be re-located at approximately this location by means of blasting under the pay item of "Explosives for Muck Removal", item 114.

MARGARET CORSON
DR. FRANK CORSON
Fairfield, Vt.
sold to R.C. TASSIE (1946)

ROBERT L. BOWEN
FC McKinstry

Mrs. Sadie Scribner
DON MASON
21475-DISHES
Chestnut Hill

SURP. PI 208+38.3
208+12.5
A 40°31' 21"
D 7'
REV. 17-208-38.3
207-93.0

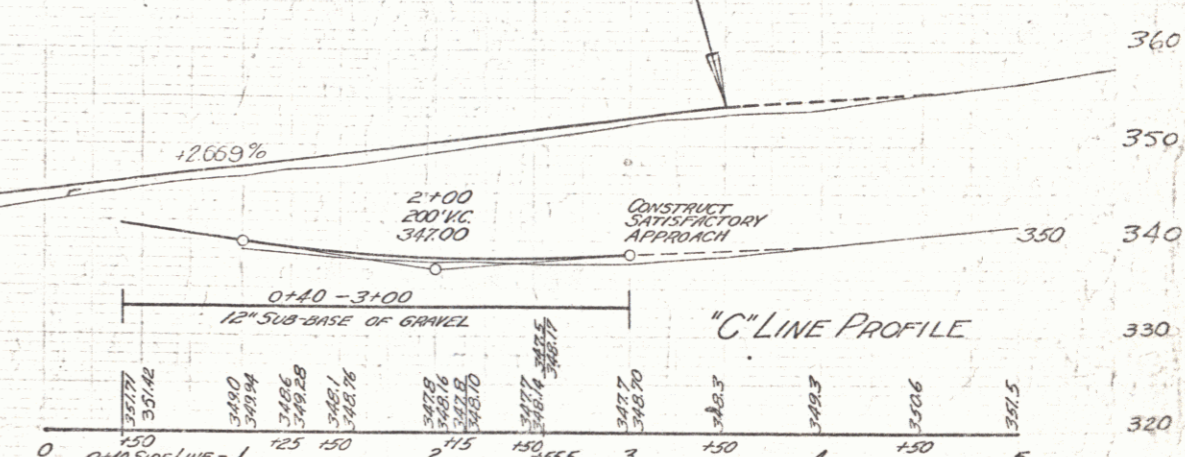
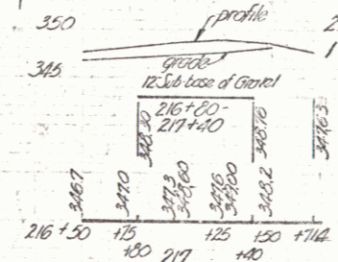
208+17
16 CGM PAC-GW 1003
16 CGM PAC-GW 1003
The new Bill of this area is approximately 100 feet long.

SE Darling
Woods

Bank 7/8 ft.
AL HASKELL
LENA M. HASKELL

214+21.19
Const. approach to Cemetery

212+68.8
Const. approach to Cemetery



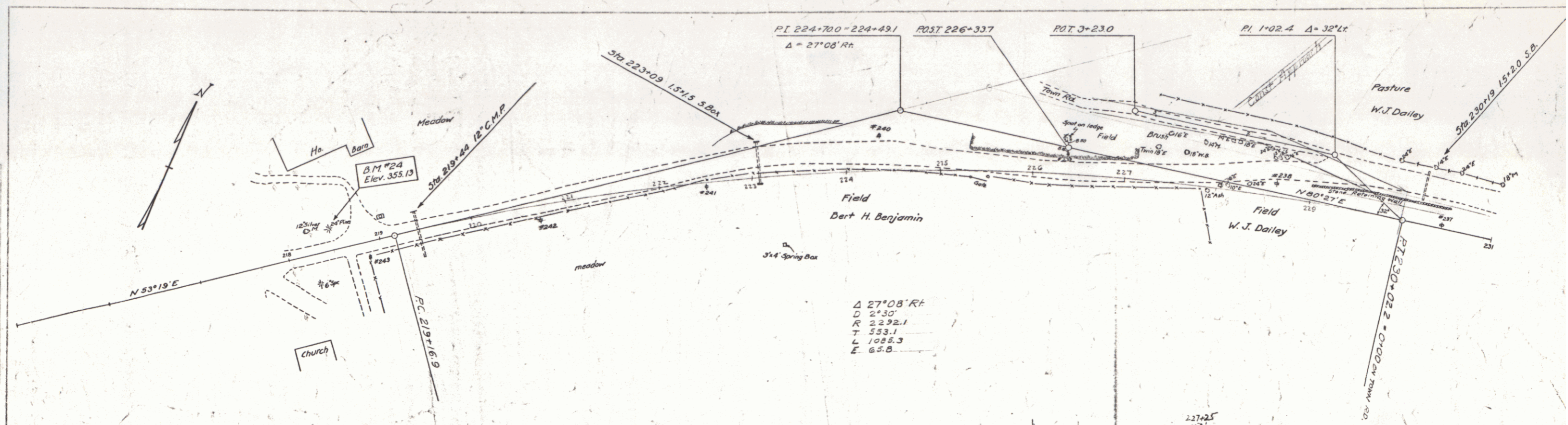
206	331.3	330.77	332.4	337.42	332.9	336.76	331.0	336.11	327.0	335.54	327.0	336.14	327.7	336.41	327.0	334.63	327.9	334.63	328.1	333.18	327.9	335.01	327.8	336.20	328.7	335.55	328.3	337.67	328.3	338.95	333.7	339.71	330.27	337.2	341.01	340.0	344.37	341.9	343.71	342.0	344.74	345.0	345.04	345.5	345.57	346.38	346.2	347.64	346.7	347.71	348.3	348.37	349.04	349.0	350.56	350.0	351.66	351.0	351.71	352.0	352.0	353.59	353.56	355.72	355.3	357.05	357.7	358.39	358.5	358.56																																																																																																																																
	206	150	207	150	208	150	209	150	210	150	211	150	212	150	213	174	10-189	180	214	150	215	150	216	125	150	180	217	150	175	218	150	150	107	141	219	150	220	150	221	150	222	150	223	150	224	150	225	150	226	150	227	150	228	150	229	150	230	150	231	150	232	150	233	150	234	150	235	150	236	150	237	150	238	150	239	150	240	150	241	150	242	150	243	150	244	150	245	150	246	150	247	150	248	150	249	150	250	150	251	150	252	150	253	150	254	150	255	150	256	150	257	150	258	150	259	150	260	150	261	150	262	150	263	150	264	150	265	150	266	150	267	150	268	150	269	150	270	150	271	150	272	150	273	150	274	150	275	150	276	150	277	150	278	150	279	150	280	150	281	150	282	150	283	150	284	150	285	150	286	150	287	150	288	150	289	150	290	150	291	150	292	150	293	150	294	150	295	150	296	150	297	150	298	150	299	150	300	150

14403 1947 10 09

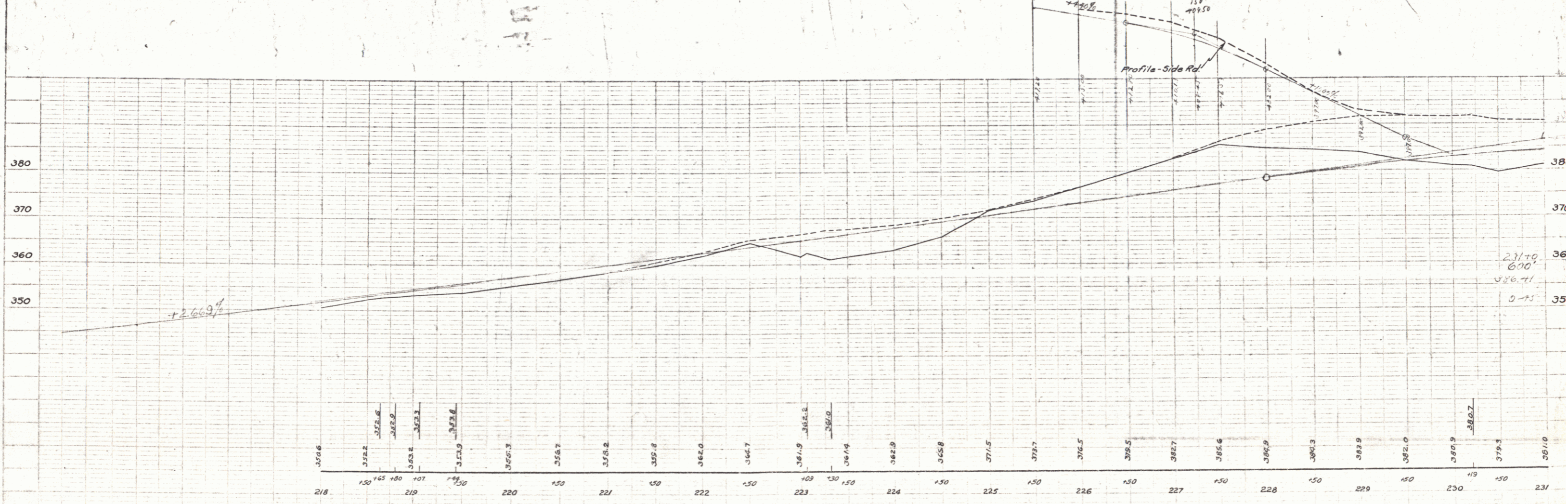
Woodbury
S. 144 (3)

Sheet 10 of 10 sheets

8



Δ 27°08' Rt
 D 2°30'
 R 2292.1
 T 533.1
 L 1088.3
 E 65.8



B.M. #24 Spike in roof of 24" Pine 23' Left of STA. 218+50 - Elev. 355.13